

Converting Colors

CIELCh(72, 45.849, 2.825)

Have a look what the booklet for
CIELCh(72, 45.849, 2.825) contains.

CIELCh(72, 45.830, 2.660)	3
<i>Conversions</i>	4
<i>Details</i>	6
<i>Harmonies</i>	11
<i>Previews</i>	20
<i>Color Blindness Simulation</i>	23
<i>CSS Examples</i>	26

Color

CIELCh(72, 45.830, 2.660)

Conversions

Conversions Part 1

Format	Color
Hex	FE8EAE
RGB	254, 142, 174
RGB Percent	100%, 56%, 68%
CMY	0.0024, 0.4418, 0.3163
CMYK	0.00, 0.44, 0.31, 0.00
HSL	343°, 99%, 78%
HSV	343°, 44%, 100%
XYZ	58.4082, 43.6590, 45.5660
YIQ	179.1360, 56.4800, 33.6960

Conversions

Conversions Part 2

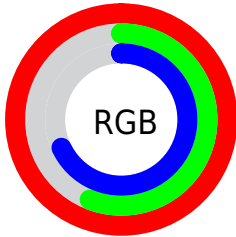
Format	Color
R_{YB}	254, 142, 174
Decimal	16682670
CIE _{Lab}	72.00, 45.78, 2.13
CIE _{LCh}	72, 45.830, 2.660
Yxy	43.6590, 0.3956, 0.2957
Android (android.graphics.Color)	4294872750 (0xFFFE8EAE)
YUV	179.1360, -2.5320, 65.6557
Hunter-Lab	66.0750, 42.1572, 5.3655

Details

The CIELCh color $72, 45.830, 2.660$ is a light color, and the websafe version is hex `FF99CC`. A complement of this color would be $93, 39.783, 172.305$, and the grayscale version is $73, 0.009, 296.813$.

A 20% lighter version of the original color is $86, 26.146, 343.269$, and $52, 45.789, 2.725$ is the 20% darker color. If you saturate the color by 10%, you get $67, 56.202, 4.777$, and if you desaturate by 10%, it is $78, 35.121, 0.950$.

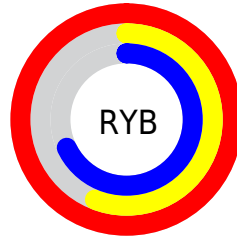
Distribution



Red (100%)

Green (56%)

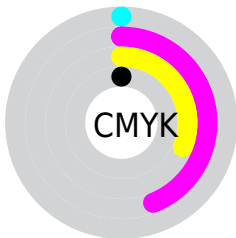
Blue (68%)



Red (100%)

Yellow (56%)

Blue (68%)

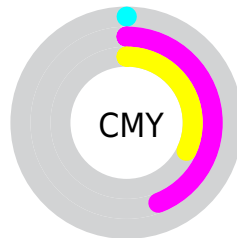


Cyan (0%)

Magenta (44%)

Yellow (31%)

Black (0%)



Cyan (0%)

Magenta (44%)

Yellow (32%)

Brightness & Saturation Gradients

These gradients show how the CIELCh color 72, 45.830, 2.660 changes by changing the brightness by 10 percent. The first figure shows a shift by +10% for each color and the second figure -10%.

Similar to the brightness gradients but the following saturation gradients show a change of the CIELCh color 72, 45.830, 2.660 by changing the saturation by 10% instead.

 72, 45.830, 2.660

 72, 45.830, 2.660

 100, 45.830, 2.660

 62, 45.830, 2.660

 92, 45.830, 2.660

 52, 45.830, 2.660

 42, 45.830, 2.660

 32, 45.830, 2.660

 22, 45.830, 2.660

 12, 45.830, 2.660

 2, 45.830, 2.660

 0, 45.830, 2.660

 72, 45.830, 2.660

 72, 45.830, 2.660

67, 56.202, 4.777

78, 35.121, 0.950

62, 65.792, 7.440

84, 24.436,
359.533

58, 74.119, 10.823

90, 14.000,
358.326

56, 80.862, 15.090

54, 86.083, 20.284

97, 3.945, 357.199

54, 88.815, 23.639

100, 0.216,
202.465

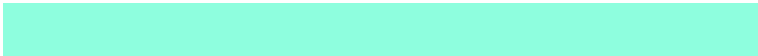
Harmonies

Complementary

The Complementary color scheme is a pair of colors which are on the opposite of each other on the color wheel.



72, 45.830, 2.660



93, 39.783, 172.305

Rectangle

The Rectangle color scheme consists of four colors that form a rectangle on the color wheel.



72, 45.830, 2.660



72, 45.830, 52.660



72, 45.830, 182.660



72, 45.830, 232.660

Sweetspot

The Sweet Spot groups the original color and five complimentary colors.



72, 45.827, 2.662



91, 12.960, 358.210



71, 65.453, 317.616



47, 9.110, 358.459



0, 0.000, 0.000



53, 0.007, 296.813

Same Dimension

The Same Dimension uses a secret algorithm to generate beautiful new colors.



72, 45.827, 2.662



67, 55.260, 4.536



76, 39.790, 39.598



50, 5.626, 357.824



40, 71.198, 22.556



10, 31.523, 13.738

Inverse Universe

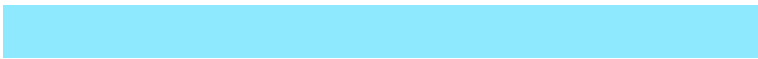
The Inverse Universe completely reimagines the original color for something new.



72, 45.827, 2.662



67, 55.260, 4.536



87, 28.640, 222.223



50, 5.626, 357.824



40, 71.198, 22.556



10, 31.523, 13.738

Previews

White Background



This preview shows how the CIELCh color 72, 45.830, 2.660 looks on a white background.

Color Contrast Check

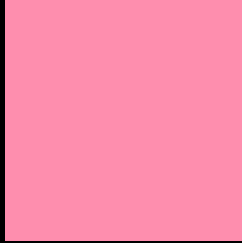
Large Text (above 18pt) WCAG AA × Fail

Any Text WCAG AA × Fail

Large Text (above 18pt) WCAG AAA × Fail

Any Text WCAG AAA × Fail

Black Background



This preview shows how the CIELCh color 72, 45.830, 2.660 looks on a black background.

Color Contrast Check

Large Text (above 18pt) WCAG AA ✓ Pass

Any Text WCAG AA ✓ Pass

Large Text (above 18pt) WCAG AAA ✓ Pass

Any Text WCAG AAA ✓ Pass

If you want to check with other color combinations, try the [Color Contrast Checker](#).

CIELCh 72, 45.830, 2.660

Background



This preview shows how black text looks on a background with the CIELCh color 72, 45.830, 2.660.

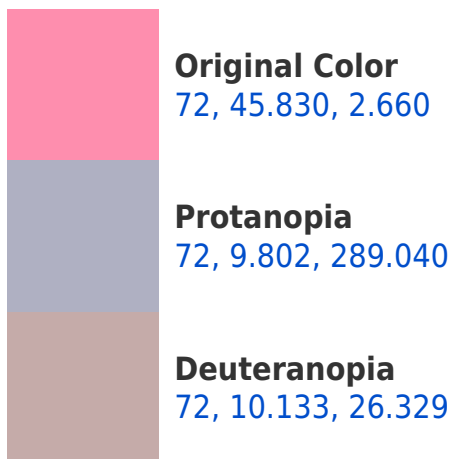


This preview shows how white text looks on a background with the CIELCh color 72, 45.830, 2.660.

Color Blindness Simulation

Color vision deficiency is a very complex topic, and I could not describe the different causes any better than Wikipedia does, so if you want to learn more, you should check out their [article about color blindness](#).

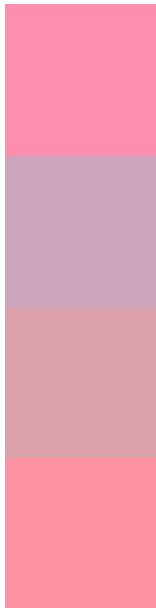
Dichromacy





Tritanopia
72, 43.128, 16.803

Trichromacy



Original Color
72, 45.830, 2.660

Protanomaly
72, 19.497, 341.386

Deuteranomaly
72, 22.789, 7.917

Tritanomaly
72, 43.823, 11.477

Monochromacy



Original Color
72, 45.830, 2.660

Achromatopsia
73, 0.009, 296.813

Achromatomaly
72, 16.412, 359.676

CSS Examples

Text

The CSS property to change the color of the text to CIElCh 72, 45.830, 2.660 is called "color". The color property can be set on classes, ids or directly on the HTML element.

This example shows how text in the color `rgb(254, 142, 174)` looks like.

```
.text, #text, p{  
    color:rgb(254, 142, 174)  
}
```

If you want to add a text shadow in that color use the text-shadow property, you can generate a text shadow directly with our [CSS Text Shadow Generator](#).

Here you see how black text with a 4 pixel rgb(254, 142, 174) colored shadow looks like.

```
.shadow{ text-shadow: 4px 4px 2px rgb(254, 142, 174) }
```

Border

The CSS property to change the border of an element to CIELCh 72, 45.830, 2.660 is called "border". The border property can be set on classes, ids or directly on the HTML element.

This example shows the color as border, it can be applied via the CSS property "border" or "border-color".

```
.border, #border, table{ border:4px solid rgb(254, 142, 174) }
```

If only the border color should be changed use the property `border-color`.

```
.border{ border-color:rgb(254, 142, 174) }
```

If you want to add a box shadow in that color use:

Here you see how a box with a 4 pixel `rgb(254, 142, 174)` colored shadow looks like.

```
.boxshadow{ -moz-box-shadow:4px 4px 4px  
4px rgb(254, 142, 174); -webkit-box-  
shadow:4px 4px 4px 4px rgb(254, 142, 174);  
box-shadow:4px 4px 4px 4px rgb(254, 142,  
174) }
```

Background

The CSS property to change the background color of an element to CIELCh 72, 45.830, 2.660 is called "background". The background property can be set on classes, ids or directly on the HTML element.

```
.background, #background, body{  
background: rgb(254, 142, 174) }
```

If only the background color should be changed can be used:

```
.background{ background-color: rgb(254,  
142, 174) }
```

This example shows the color as background, it is applied via the CSS property "background".

To optimize and compress your CSS code, you can use our [online CSS compressor and optimizer](#) based on csstidy. If you want to create a linear or radial gradient as background or border, check our [CSS Gradient Generator](#).

Hey! You found this booklet interesting? Support Converting Colors with the new Membership Option!

The pro membership hides all ads, plus gives you double the colors in the color bucket, and more awesome pro features!

[Learn more, Memberships starting at \\$2.50/m!](#)

**Follow me
on Twitter!**

@ConvertingColor