

Converting Colors

CIELCh(72, 46.002, 9.055)

Have a look what the booklet for
CIELCh(72, 46.002, 9.055) contains.

CIELCh(72, 45.585, 8.841)	3
<i>Conversions</i>	4
<i>Details</i>	6
<i>Harmonies</i>	11
<i>Previews</i>	20
<i>Color Blindness Simulation</i>	23
<i>CSS Examples</i>	26

Color

CIELCh(72, 45.585, 8.841)

Conversions

Conversions Part 1

Format	Color
Hex	FF8FA6
RGB	255, 143, 166
RGB Percent	100%, 56%, 65%
CMY	0.0000, 0.4407, 0.3506
CMYK	0.00, 0.44, 0.35, 0.00
HSL	348°, 100%, 78%
HSV	348°, 44%, 100%
XYZ	58.1049, 43.6590, 41.2513
YIQ	179.1100, 59.3690, 30.8970

Conversions

Conversions Part 2

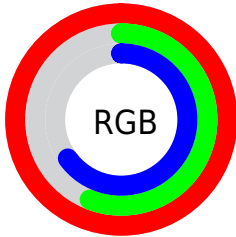
Format	Color
R _Y B	255, 143, 166
Decimal	16748454
CIE Lab	72.00, 45.04, 7.01
CIE LCh	72, 45.585, 8.841
Yxy	43.6590, 0.4063, 0.3053
Android (android.graphics.Color)	4294938534 (0xFFFF8FA6)
YUV	179.1100, -6.4632, 66.5555
Hunter-Lab	66.0750, 41.3377, 9.2371

Details

The CIELCh color **72, 45.585, 8.841** is a light color, and the websafe version is hex **FF9999**. A complement of this color would be **93, 37.516, 178.534**, and the grayscale version is **73, 0.009, 296.813**.

A 20% lighter version of the original color is **86, 23.449, 352.028**, and **52, 44.880, 8.855** is the 20% darker color. If you saturate the color by 10%, you get **67, 56.015, 10.960**, and if you desaturate by 10%, it is **78, 34.509, 6.928**.

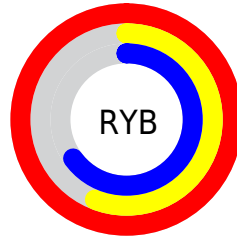
Distribution



Red (100%)

Green (56%)

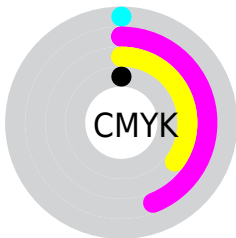
Blue (65%)



Red (100%)

Yellow (56%)

Blue (65%)

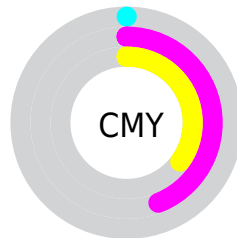


Cyan (0%)

Magenta (44%)

Yellow (35%)

Black (0%)



Cyan (0%)

Magenta (44%)

Yellow (35%)

Brightness & Saturation Gradients

These gradients show how the CIELCh color 72, 45.585, 8.841 changes by changing the brightness by 10 percent. The first figure shows a shift by +10% for each color and the second figure -10%.

Similar to the brightness gradients but the following saturation gradients show a change of the CIELCh color 72, 45.585, 8.841 by changing the saturation by 10% instead.

 72, 45.585, 8.841

 72, 45.585, 8.841

 100, 45.585, 8.841

 62, 45.585, 8.841

 92, 45.585, 8.841

 52, 45.585, 8.841

 42, 45.585, 8.841

 32, 45.585, 8.841

 22, 45.585, 8.841

 12, 45.585, 8.841

 2, 45.585, 8.841

 0, 45.585, 8.841

 72, 45.585, 8.841

 72, 45.585, 8.841

67, 56.015, 10.960

78, 34.509, 6.928

62, 66.173, 13.801

84, 23.875, 5.469

58, 75.368, 17.403

91, 13.618, 4.248

56, 83.315, 21.867

97, 3.838, 3.120

54, 90.017, 27.098

100, 0.012,
296.813

54, 93.621, 30.285

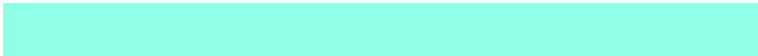
Harmonies

Complementary

The Complementary color scheme is a pair of colors which are on the opposite of each other on the color wheel.



72, 45.585, 8.841



93, 37.516, 178.534

Rectangle

The Rectangle color scheme consists of four colors that form a rectangle on the color wheel.



72, 45.585, 8.841



72, 45.585, 58.841



72, 45.585, 188.841



72, 45.585, 238.841

Sweetspot

The Sweet Spot groups the original color and five complimentary colors.



72, 45.325, 8.718



91, 12.548, 4.128



72, 66.499, 320.216



47, 8.830, 4.378



0, 0.000, 0.000



53, 0.007, 296.813

Same Dimension

The Same Dimension uses a secret algorithm to generate beautiful new colors.



72, 45.325, 8.718



67, 54.890, 10.694



78, 38.296, 47.541



50, 5.438, 3.743



40, 74.724, 29.256



10, 31.957, 18.506

Inverse Universe

The Inverse Universe completely reimagines the original color for something new.



72, 45.325, 8.718



67, 54.890, 10.694



85, 28.483, 234.459



50, 5.438, 3.743



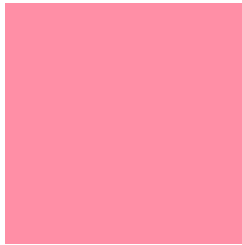
40, 74.724, 29.256



10, 31.957, 18.506

Previews

White Background



This preview shows how the CIELCh color 72, 45.585, 8.841 looks on a white background.

Color Contrast Check

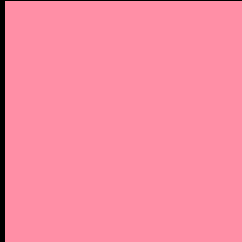
Large Text (above 18pt) WCAG AA × Fail

Any Text WCAG AA × Fail

Large Text (above 18pt) WCAG AAA × Fail

Any Text WCAG AAA × Fail

Black Background



This preview shows how the CIELCh color 72, 45.585, 8.841 looks on a black background.

Color Contrast Check

Large Text (above 18pt) WCAG AA ✓ Pass

Any Text WCAG AA ✓ Pass

Large Text (above 18pt) WCAG AAA ✓ Pass

Any Text WCAG AAA ✓ Pass

If you want to check with other color combinations, try the [Color Contrast Checker](#).

CIELCh 72, 45.585, 8.841

Background



This preview shows how black text looks on a background with the CIELCh color 72, 45.585, 8.841.

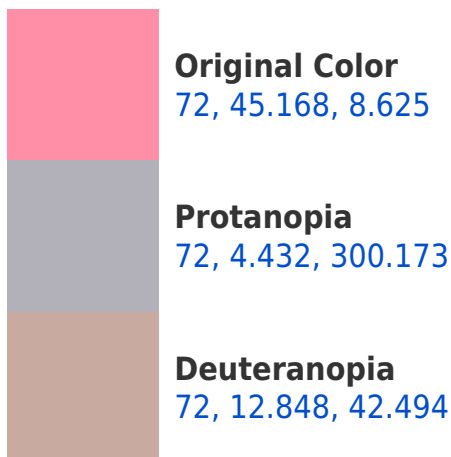


This preview shows how white text looks on a background with the CIELCh color 72, 45.585, 8.841.

Color Blindness Simulation

Color vision deficiency is a very complex topic, and I could not describe the different causes any better than Wikipedia does, so if you want to learn more, you should check out their [article about color blindness](#).

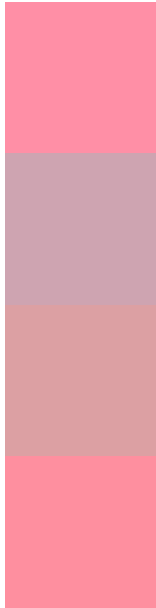
Dichromacy





Tritanopia
72, 44.378, 16.505

Trichromacy



Original Color
72, 45.168, 8.625

Protanomaly
71, 17.520, 357.362

Deuteranomaly
72, 23.827, 17.746

Tritanomaly
72, 44.687, 13.230

Monochromacy



Original Color
72, 45.168, 8.625

Achromatopsia
73, 0.009, 296.813

Achromatomaly
72, 16.368, 5.604

CSS Examples

Text

The CSS property to change the color of the text to CIELCh 72, 45.585, 8.841 is called "color". The color property can be set on classes, ids or directly on the HTML element.

This example shows how text in the color `rgb(255, 143, 166)` looks like.

```
.text, #text, p{  
    color:rgb(255, 143, 166)  
}
```

If you want to add a text shadow in that color use the text-shadow property, you can generate a text shadow directly with our [CSS Text Shadow Generator](#).

Here you see how black text with a 4 pixel rgb(255, 143, 166) colored shadow looks like.

```
.shadow{ text-shadow: 4px 4px 2px rgb(255, 143, 166) }
```

Border

The CSS property to change the border of an element to CIELCh 72, 45.585, 8.841 is called "border". The border property can be set on classes, ids or directly on the HTML element.

This example shows the color as border, it can be applied via the CSS property "border" or "border-color".

```
.border, #border, table{ border:4px solid rgb(255, 143, 166) }
```

If only the border color should be changed use the property `border-color`.

```
.border{ border-color:rgb(255, 143, 166) }
```

If you want to add a box shadow in that color use:

Here you see how a box with a 4 pixel `rgb(255, 143, 166)` colored shadow looks like.

```
.boxshadow{ -moz-box-shadow:4px 4px 4px  
4px rgb(255, 143, 166); -webkit-box-  
shadow:4px 4px 4px 4px rgb(255, 143, 166);  
box-shadow:4px 4px 4px 4px rgb(255, 143,  
166) }
```

Background

The CSS property to change the background color of an element to CIELCh 72, 45.585, 8.841 is called "background". The background property can be set on classes, ids or directly on the HTML element.

```
.background, #background, body{  
background: rgb(255, 143, 166) }
```

If only the background color should be changed can be used:

```
.background{ background-color: rgb(255,  
143, 166) }
```

This example shows the color as background, it is applied via the CSS property "background".

To optimize and compress your CSS code, you can use our [online CSS compressor and optimizer](#) based on csstidy. If you want to create a linear or radial gradient as background or border, check our [CSS Gradient Generator](#).

Hey! You found this booklet interesting? Support Converting Colors with the new Membership Option!

The pro membership hides all ads, plus gives you double the colors in the color bucket, and more awesome pro features!

[Learn more, Memberships starting at \\$2.50/m!](#)

**Follow me
on Twitter!**

@ConvertingColor