

Converting Colors

CIELCh(72, 49.940, 40.572)

Have a look what the booklet for
CIELCh(72, 49.940, 40.572) contains.

CIELCh(72, 49.940, 40.572)	3
<i>Conversions</i>	4
<i>Details</i>	6
<i>Harmonies</i>	11
<i>Previews</i>	20
<i>Color Blindness Simulation</i>	23
<i>CSS Examples</i>	26

Color

CIELCh(72, 49.940, 40.572)

Conversions

Conversions Part 1

Format	Color
Hex	FF9377
RGB	255, 147, 119
RGB Percent	100%, 58%, 47%
CMY	0.0000, 0.4221, 0.5320
CMYK	0.00, 0.42, 0.53, 0.00
HSL	12°, 100%, 73%
HSV	12°, 53%, 100%
XYZ	55.2331, 43.6590, 23.0764
YIQ	176.1000, 73.3560, 14.1880

Conversions

Conversions Part 2

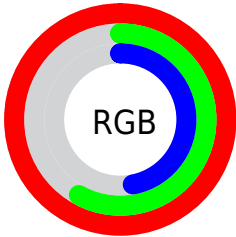
Format	Color
R_{YB}	255, 154, 119
Decimal	16749431
CIE _{Lab}	72.00, 37.93, 32.48
CIE _{LCh}	72, 49.940, 40.572
Yxy	43.6590, 0.4528, 0.3580
Android (android.graphics.Color)	4294939511 (0xFFFF9377)
YUV	176.1000, -28.1503, 69.1953
Hunter-Lab	66.0750, 33.5797, 25.5457

Details

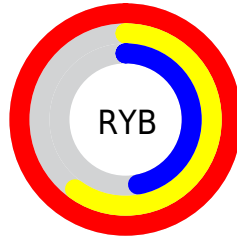
The CIELCh color **72, 49.940, 40.572** is a light color, and the websafe version is hex **FF9966**. A complement of this color would be **85, 32.995, 224.454**, and the grayscale version is **72, 0.009, 296.813**.

A 20% lighter version of the original color is **85, 26.600, 56.358**, and **52, 49.773, 40.912** is the 20% darker color. If you saturate the color by 10%, you get **67, 61.340, 41.311**, and if you desaturate by 10%, it is **77, 38.822, 40.169**.

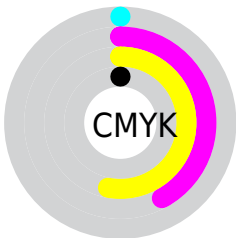
Distribution



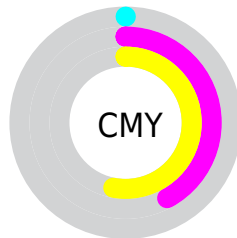
- Red (100%)
- Green (58%)
- Blue (47%)



- Red (100%)
- Yellow (60%)
- Blue (47%)



- Cyan (0%)
- Magenta (42%)
- Yellow (53%)
- Black (0%)



- Cyan (0%)
- Magenta (42%)
- Yellow (53%)

Brightness & Saturation Gradients

These gradients show how the CIELCh color 72, 49.940, 40.572 changes by changing the brightness by 10 percent. The first figure shows a shift by +10% for each color and the second figure -10%.

Similar to the brightness gradients but the following saturation gradients show a change of the CIELCh color 72, 49.940, 40.572 by changing the saturation by 10% instead.

72, 49.940, 40.572

72, 49.940, 40.572

100, 49.940,
40.572

62, 49.940, 40.572

92, 49.940, 40.572

52, 49.940, 40.572

42, 49.940, 40.572

32, 49.940, 40.572

22, 49.940, 40.572

12, 49.940, 40.572

2, 49.940, 40.572

0, 49.940, 40.572

72, 49.940, 40.572

72, 49.940, 40.572

67, 61.340, 41.311

77, 38.822, 40.169

63, 73.254, 42.190

82, 28.615, 39.927

60, 84.854, 43.073

87, 19.169, 39.858

57, 94.692, 43.441

93, 10.459, 39.915

56, 99.610, 43.228

98, 2.432, 39.902

100, 0.012,
296.813

Harmonies

Complementary

The Complementary color scheme is a pair of colors which are on the opposite of each other on the color wheel.



72, 49.940, 40.572



85, 32.995, 224.454

Rectangle

The Rectangle color scheme consists of four colors that form a rectangle on the color wheel.



72, 49.940, 40.572



72, 49.940, 90.572



72, 49.940, 220.572



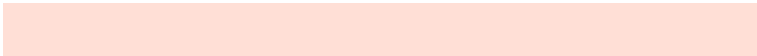
72, 49.940, 270.572

Sweetspot

The Sweet Spot groups the original color and five complimentary colors.



72, 49.768, 40.624



91, 12.828, 39.890



70, 71.692, 334.138



47, 8.735, 39.876



0, 0.000, 0.000



53, 0.007, 296.813

Same Dimension

The Same Dimension uses a secret algorithm to generate beautiful new colors.



72, 49.768, 40.624



67, 62.287, 41.375



87, 51.786, 86.662



50, 4.437, 39.949



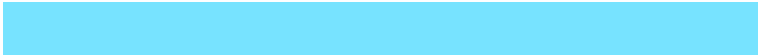
42, 79.770, 43.649



12, 29.883, 37.553

Inverse Universe

The Inverse Universe completely reimagines the original color for something new.



85, 32.995, 224.454



83, 37.209, 226.434



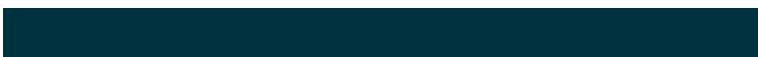
67, 52.947, 283.664



52, 4.181, 220.642



58, 35.524, 237.110



19, 16.172, 231.674

Previews

White Background



This preview shows how the CIELCh color 72, 49.940, 40.572 looks on a white background.

Color Contrast Check

Large Text (above 18pt) WCAG AA × Fail

Any Text WCAG AA × Fail

Large Text (above 18pt) WCAG AAA × Fail

Any Text WCAG AAA × Fail

Black Background



This preview shows how the CIELCh color 72, 49.940, 40.572 looks on a black background.

Color Contrast Check

Large Text (above 18pt) WCAG AA ✓ Pass

Any Text WCAG AA ✓ Pass

Large Text (above 18pt) WCAG AAA ✓ Pass

Any Text WCAG AAA ✓ Pass

If you want to check with other color combinations, try the [Color Contrast Checker](#).

CIELCh 72, 49.940, 40.572

Background



This preview shows how black text looks on a background with the CIELCh color 72, 49.940, 40.572.



This preview shows how white text looks on a background with the CIELCh color 72, 49.940, 40.572.

Color Blindness Simulation

Color vision deficiency is a very complex topic, and I could not describe the different causes any better than Wikipedia does, so if you want to learn more, you should check out their [article about color blindness](#).

Dichromacy



Original Color

72, 49.940, 40.572

Protanopia

72, 24.766, 96.234

Deuteranopia

72, 35.185, 74.683



Tritanopia
72, 44.824, 17.299

Trichromacy



Original Color
72, 49.940, 40.572



Protanomaly
72, 29.454, 65.568



Deuteranomaly
72, 38.310, 58.773



Tritanomaly
72, 45.754, 26.517

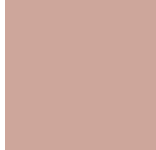
Monochromacy



Original Color
72, 49.940, 40.572



Achromatopsia
72, 0.009, 296.813



Achromatomaly
71, 16.822, 41.269

CSS Examples

Text

The CSS property to change the color of the text to CIELCh 72, 49.940, 40.572 is called "color". The color property can be set on classes, ids or directly on the HTML element.

This example shows how text in the color `rgb(255, 147, 119)` looks like.

```
.text, #text, p{  
    color:rgb(255, 147, 119)  
}
```

If you want to add a text shadow in that color use the text-shadow property, you can generate a text shadow directly with our [CSS Text Shadow Generator](#).

Here you see how black text with a 4 pixel rgb(255, 147, 119) colored shadow looks like.

```
.shadow{ text-shadow: 4px 4px 2px rgb(255, 147, 119) }
```

Border

The CSS property to change the border of an element to CIELCh 72, 49.940, 40.572 is called "border". The border property can be set on classes, ids or directly on the HTML element.

This example shows the color as border, it can be applied via the CSS property "border" or "border-color".

```
.border, #border, table{ border:4px solid rgb(255, 147, 119) }
```

If only the border color should be changed use the property `border-color`.

```
.border{ border-color:rgb(255, 147, 119) }
```

If you want to add a box shadow in that color use:

Here you see how a box with a 4 pixel `rgb(255, 147, 119)` colored shadow looks like.

```
.boxshadow{ -moz-box-shadow:4px 4px 4px  
4px rgb(255, 147, 119); -webkit-box-  
shadow:4px 4px 4px 4px rgb(255, 147, 119);  
box-shadow:4px 4px 4px 4px rgb(255, 147,  
119) }
```

Background

The CSS property to change the background color of an element to CIELCh 72, 49.940, 40.572 is called "background". The background property can be set on classes, ids or directly on the HTML element.

```
.background, #background, body{  
background: rgb(255, 147, 119) }
```

If only the background color should be changed can be used:

```
.background{ background-color: rgb(255,  
147, 119) }
```

This example shows the color as background, it is applied via the CSS property "background".

To optimize and compress your CSS code, you can use our [online CSS compressor and optimizer](#) based on csstidy. If you want to create a linear or radial gradient as background or border, check our [CSS Gradient Generator](#).

Hey! You found this booklet interesting? Support Converting Colors with the new Membership Option!

The pro membership hides all ads, plus gives you double the colors in the color bucket, and more awesome pro features!

[Learn more, Memberships starting at \\$2.50/m!](#)

**Follow me
on Twitter!**

@ConvertingColor