

Converting Colors

CIELCh(72, 6.306, 23.192)

Have a look what the booklet for
CIELCh(72, 6.306, 23.192) contains.

CIELCh(72, 6.140, 24.900)	3
<i>Conversions</i>	4
<i>Details</i>	6
<i>Harmonies</i>	11
<i>Previews</i>	20
<i>Color Blindness Simulation</i>	23
<i>CSS Examples</i>	26

Color

CIELCh(72, 6.140, 24.900)

Conversions

Conversions Part 1

Format	Color
Hex	BDADAC
RGB	189, 173, 172
RGB Percent	74%, 68%, 67%
CMY	0.2590, 0.3217, 0.3257
CMYK	0.00, 0.08, 0.09, 0.26
HSL	4°, 11%, 71%
HSV	4°, 9%, 74%
XYZ	43.3514, 43.6590, 45.1485
YIQ	177.6700, 9.8570, 3.0810

Conversions

Conversions Part 2

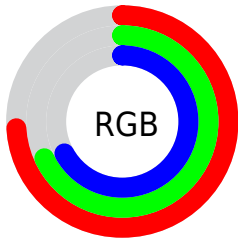
Format	Color
RYB	189, 173, 172
Decimal	12430764
CIELab	72.00, 5.57, 2.59
CIElCh	72, 6.140, 24.900
Yxy	43.6590, 0.3280, 0.3304
Android (android.graphics.Color)	4290620844 (0xFFBDADAC)
YUV	177.6700, -2.7953, 9.9364
Hunter-Lab	66.0750, 1.4816, 5.7401

Details

The CIELCh color $72, 6.140, 24.900$ is a light color, and the websafe version is hex 999999 . A complement of this color would be $75, 5.797, 204.414$, and the grayscale version is $72, 0.009, 296.813$.

A 20% lighter version of the original color is $92, 6.172, 24.514$, and $52, 6.179, 25.370$ is the 20% darker color. If you saturate the color by 10%, you get $67, 13.497, 25.527$, and if you desaturate by 10%, it is $77, 0.657, 205.405$.

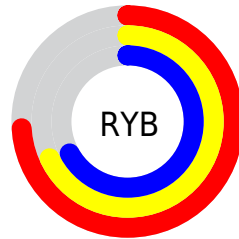
Distribution



Red (74%)

Green (68%)

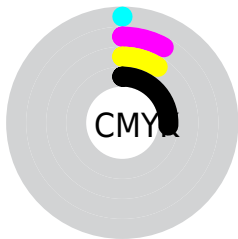
Blue (67%)



Red (74%)

Yellow (68%)

Blue (67%)

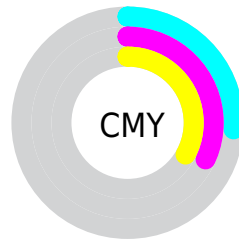


Cyan (0%)

Magenta (8%)

Yellow (9%)

Black (26%)



Cyan (26%)

Magenta (32%)

Yellow (33%)

Brightness & Saturation Gradients

These gradients show how the CIELCh color 72, 6.140, 24.900 changes by changing the brightness by 10 percent. The first figure shows a shift by +10% for each color and the second figure -10%.

Similar to the brightness gradients but the following saturation gradients show a change of the CIELCh color 72, 6.140, 24.900 by changing the saturation by 10% instead.

 72, 6.140, 24.900

 72, 6.140, 24.900

 100, 6.140, 24.900

 62, 6.140, 24.900

 92, 6.140, 24.900

 52, 6.140, 24.900

 42, 6.140, 24.900

 32, 6.140, 24.900

 22, 6.140, 24.900

 12, 6.140, 24.900

 2, 6.140, 24.900

 0, 6.140, 24.900

 72, 6.140, 24.900

 72, 6.140, 24.900

67, 13.497, 25.527

77, 0.657, 205.405

62, 21.444, 26.306

82, 6.935, 204.375

57, 29.971, 27.341

87, 12.746,
204.130

53, 39.019, 28.714

93, 18.142,
203.973

49, 48.454, 30.506

46, 58.044, 32.767

96, 21.407,
198.099

43, 67.408, 35.434

41, 75.802, 38.140

40, 82.064, 40.322

Harmonies

Complementary

The Complementary color scheme is a pair of colors which are on the opposite of each other on the color wheel.



72, 6.140, 24.900



75, 5.797, 204.414

Rectangle

The Rectangle color scheme consists of four colors that form a rectangle on the color wheel.



72, 6.140, 24.900



72, 6.140, 74.900



72, 6.140, 204.900



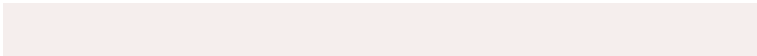
72, 6.140, 254.900

Sweetspot

The Sweet Spot groups the original color and five complimentary colors.



72, 6.139, 24.918



95, 2.467, 24.482



72, 10.855, 326.284



50, 1.875, 24.570



98, 0.011, 296.813



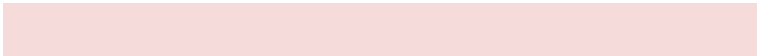
51, 0.007, 296.813

Same Dimension

The Same Dimension uses a secret algorithm to generate beautiful new colors.



72, 6.139, 24.918



90, 9.344, 25.043



74, 5.812, 79.459



37, 3.868, 24.938



33, 72.001, 40.493



3, 11.763, 22.954

Inverse Universe

The Inverse Universe completely reimagines the original color for something new.



75, 5.797, 204.414



94, 8.696, 204.331



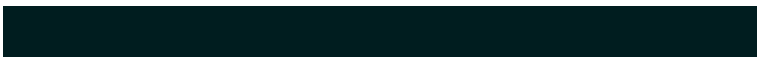
73, 5.734, 261.871



39, 3.644, 204.400



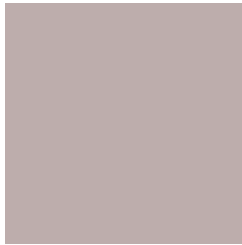
56, 32.489, 206.187



9, 10.772, 204.602

Previews

White Background



This preview shows how the CIELCh color 72, 6.140, 24.900 looks on a white background.

Color Contrast Check

Large Text (above 18pt) WCAG AA × Fail

Any Text WCAG AA × Fail

Large Text (above 18pt) WCAG AAA × Fail

Any Text WCAG AAA × Fail

Black Background



This preview shows how the CIELCh color 72, 6.140, 24.900 looks on a black background.

Color Contrast Check

Large Text (above 18pt) WCAG AA ✓ Pass

Any Text WCAG AA ✓ Pass

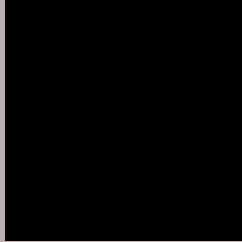
Large Text (above 18pt) WCAG AAA ✓ Pass

Any Text WCAG AAA ✓ Pass

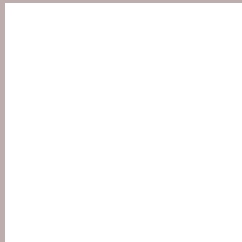
If you want to check with other color combinations, try the [Color Contrast Checker](#).

CIELCh 72, 6.140, 24.900

Background



This preview shows how black text looks on a background with the CIELCh color 72, 6.140, 24.900.



This preview shows how white text looks on a background with the CIELCh color 72, 6.140, 24.900.

Color Blindness Simulation

Color vision deficiency is a very complex topic, and I could not describe the different causes any better than Wikipedia does, so if you want to learn more, you should check out their [article about color blindness](#).

Dichromacy



Original Color

72, 6.140, 24.900

Protanopia

72, 1.846, 55.193

Deuteranopia

72, 9.240, 16.808



Tritanopia
72, 10.324, 337.096

Trichromacy



Original Color
72, 6.140, 24.900

Protanomaly
72, 3.213, 39.211

Deuteranomaly
72, 8.058, 20.039

Tritanomaly
72, 8.075, 347.533

Monochromacy



Original Color
72, 6.140, 24.900

Achromatopsia
73, 0.009, 296.813

Achromatomaly
72, 2.260, 19.374

CSS Examples

Text

The CSS property to change the color of the text to CIELCh 72, 6.140, 24.900 is called "color". The color property can be set on classes, ids or directly on the HTML element.

This example shows how text in the color `rgb(189, 173, 172)` looks like.

```
.text, #text, p{  
    color:rgb(189, 173, 172)  
}
```

If you want to add a text shadow in that color use the text-shadow property, you can generate a text shadow directly with our [CSS Text Shadow Generator](#).

Here you see how black text with a 4 pixel rgb(189, 173, 172) colored shadow looks like.

```
.shadow{ text-shadow: 4px 4px 2px rgb(189, 173, 172) }
```

Border

The CSS property to change the border of an element to CIELCh 72, 6.140, 24.900 is called "border". The border property can be set on classes, ids or directly on the HTML element.

This example shows the color as border, it can be applied via the CSS property "border" or "border-color".

```
.border, #border, table{ border:4px solid rgb(189, 173, 172) }
```

If only the border color should be changed use the property border-color.

```
.border{ border-color:rgb(189, 173, 172) }
```

If you want to add a box shadow in that color use:

Here you see how a box with a 4 pixel rgb(189, 173, 172) colored shadow looks like.

```
.boxshadow{ -moz-box-shadow:4px 4px 4px  
4px rgb(189, 173, 172); -webkit-box-  
shadow:4px 4px 4px 4px rgb(189, 173, 172);  
box-shadow:4px 4px 4px 4px rgb(189, 173,  
172) }
```

Background

The CSS property to change the background color of an element to CIELCh 72, 6.140, 24.900 is called "background". The background property can be set on classes, ids or directly on the HTML element.

```
.background, #background, body{  
background: rgb(189, 173, 172) }
```

If only the background color should be changed can be used:

```
.background{ background-color: rgb(189,  
173, 172) }
```

This example shows the color as background, it is applied via the CSS property "background".

To optimize and compress your CSS code, you can use our [online CSS compressor and optimizer](#) based on csstidy. If you want to create a linear or radial gradient as background or border, check our [CSS Gradient Generator](#).

Hey! You found this booklet interesting? Support Converting Colors with the new Membership Option!

The pro membership hides all ads, plus gives you double the colors in the color bucket, and more awesome pro features!

[Learn more, Memberships starting at \\$2.50/m!](#)

**Follow me
on Twitter!**

@ConvertingColor