

Converting Colors

CIELCh(72, 6.525, 13.150)

Have a look what the booklet for
CIELCh(72, 6.525, 13.150) contains.

CIELCh(72, 6.504, 15.120)	3
<i>Conversions</i>	4
<i>Details</i>	6
<i>Harmonies</i>	11
<i>Previews</i>	20
<i>Color Blindness Simulation</i>	23
<i>CSS Examples</i>	26

Color

CIELCh(72, 6.504, 15.120)

Conversions

Conversions Part 1

Format	Color
Hex	BEADAE
RGB	190, 173, 174
RGB Percent	75%, 68%, 68%
CMY	0.2566, 0.3232, 0.3193
CMYK	0.00, 0.09, 0.08, 0.26
HSL	356°, 11%, 71%
HSV	356°, 9%, 74%
XYZ	43.5916, 43.6590, 45.9604
YIQ	178.1970, 9.8110, 3.9150

Conversions

Conversions Part 2

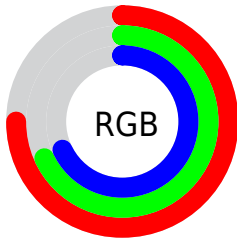
Format	Color
R _Y B	190, 173, 174
Decimal	12496302
CIE Lab	72.00, 6.28, 1.70
CIE LCh	72, 6.504, 15.120
Yxy	43.6590, 0.3272, 0.3277
Android (android.graphics.Color)	4290686382 (0xFFBEADA E)
YUV	178.1970, -2.0691, 10.3512
Hunter-Lab	66.0750, 2.1305, 5.0116

Details

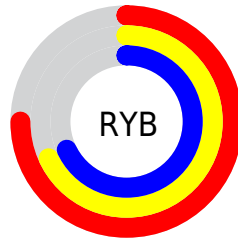
The CIELCh color **72, 6.504, 15.120** is a light color, and the websafe version is hex **999999**. A complement of this color would be **76, 6.185, 194.007**, and the grayscale version is **72, 0.009, 296.813**.

A 20% lighter version of the original color is **92, 6.524, 15.246**, and **52, 6.559, 15.048** is the 20% darker color. If you saturate the color by 10%, you get **67, 14.251, 16.096**, and if you desaturate by 10%, it is **77, 0.725, 195.191**.

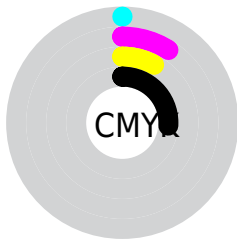
Distribution



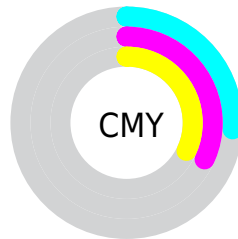
- Red (75%)
- Green (68%)
- Blue (68%)



- Red (75%)
- Yellow (68%)
- Blue (68%)



- Cyan (0%)
- Magenta (9%)
- Yellow (8%)
- Black (26%)



- Cyan (26%)
- Magenta (32%)
- Yellow (32%)

Brightness & Saturation Gradients

These gradients show how the CIELCh color 72, 6.504, 15.120 changes by changing the brightness by 10 percent. The first figure shows a shift by +10% for each color and the second figure -10%.

Similar to the brightness gradients but the following saturation gradients show a change of the CIELCh color 72, 6.504, 15.120 by changing the saturation by 10% instead.

 72, 6.504, 15.120

 72, 6.504, 15.120

 100, 6.504, 15.120

 62, 6.504, 15.120

 92, 6.504, 15.120

 52, 6.504, 15.120

 42, 6.504, 15.120

 32, 6.504, 15.120

 22, 6.504, 15.120

 12, 6.504, 15.120

 2, 6.504, 15.120

 0, 6.504, 15.120

 72, 6.504, 15.120

 72, 6.504, 15.120

67, 14.251, 16.096

77, 0.725, 195.191

62, 22.513, 17.258

83, 7.455, 193.927

57, 31.233, 18.720

88, 13.726,
193.383

52, 40.282, 20.586

94, 19.584,
192.937

48, 49.450, 22.975

45, 58.454, 25.999

96, 21.225,
198.110

42, 66.971, 29.682

40, 74.608, 33.799

40, 80.699, 37.495

Harmonies

Complementary

The Complementary color scheme is a pair of colors which are on the opposite of each other on the color wheel.



72, 6.504, 15.120



76, 6.185, 194.007

Rectangle

The Rectangle color scheme consists of four colors that form a rectangle on the color wheel.



72, 6.504, 15.120



72, 6.504, 65.120



72, 6.504, 195.120



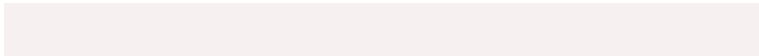
72, 6.504, 245.120

Sweetspot

The Sweet Spot groups the original color and five complimentary colors.



72, 6.502, 15.135



95, 2.647, 14.516



72, 10.988, 323.069



51, 2.028, 14.627



99, 0.012, 296.813



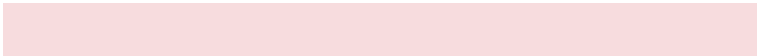
52, 0.007, 296.813

Same Dimension

The Same Dimension uses a secret algorithm to generate beautiful new colors.



72, 6.502, 15.135



90, 9.985, 15.338



74, 5.399, 66.820



37, 4.102, 15.170



32, 70.567, 37.257



3, 12.283, 16.027

Inverse Universe

The Inverse Universe completely reimagines the original color for something new.



72, 6.502, 15.135



90, 9.985, 15.338



74, 5.239, 249.006



37, 4.102, 15.170



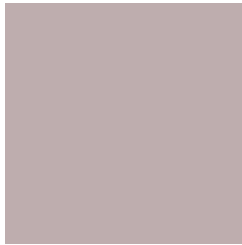
32, 70.567, 37.257



3, 12.283, 16.027

Previews

White Background



This preview shows how the CIELCh color 72, 6.504, 15.120 looks on a white background.

Color Contrast Check

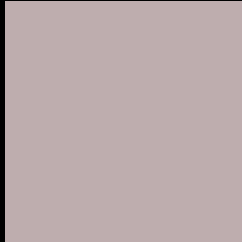
Large Text (above 18pt) WCAG AA × Fail

Any Text WCAG AA × Fail

Large Text (above 18pt) WCAG AAA × Fail

Any Text WCAG AAA × Fail

Black Background



This preview shows how the CIELCh color 72, 6.504, 15.120 looks on a black background.

Color Contrast Check

Large Text (above 18pt) WCAG AA ✓ Pass

Any Text WCAG AA ✓ Pass

Large Text (above 18pt) WCAG AAA ✓ Pass

Any Text WCAG AAA ✓ Pass

If you want to check with other color combinations, try the [Color Contrast Checker](#).

CIELCh 72, 6.504, 15.120

Background



This preview shows how black text looks on a background with the CIELCh color 72, 6.504, 15.120.



This preview shows how white text looks on a background with the CIELCh color 72, 6.504, 15.120.

Color Blindness Simulation

Color vision deficiency is a very complex topic, and I could not describe the different causes any better than Wikipedia does, so if you want to learn more, you should check out their [article about color blindness](#).

Dichromacy



Original Color

72, 6.504, 15.120

Protanopia

72, 1.593, 39.106

Deuteranopia

72, 8.947, 9.692



Tritanopia
72, 10.324, 337.096

Trichromacy



Original Color
72, 6.504, 15.120

Protanomaly
72, 3.071, 29.660

Deuteranomaly
72, 7.715, 11.955

Tritanomaly
72, 8.075, 347.533

Monochromacy



Original Color
72, 6.504, 15.120

Achromatopsia
73, 0.009, 296.813

Achromatomaly
72, 2.260, 19.374

CSS Examples

Text

The CSS property to change the color of the text to CIELCh 72, 6.504, 15.120 is called "color". The color property can be set on classes, ids or directly on the HTML element.

This example shows how text in the color `rgb(190, 173, 174)` looks like.

```
.text, #text, p{  
    color:rgb(190, 173, 174)  
}
```

If you want to add a text shadow in that color use the text-shadow property, you can generate a text shadow directly with our [CSS Text Shadow Generator](#).

Here you see how black text with a 4 pixel rgb(190, 173, 174) colored shadow looks like.

```
.shadow{ text-shadow: 4px 4px 2px rgb(190, 173, 174) }
```

Border

The CSS property to change the border of an element to CIELCh 72, 6.504, 15.120 is called "border". The border property can be set on classes, ids or directly on the HTML element.

This example shows the color as border, it can be applied via the CSS property "border" or "border-color".

```
.border, #border, table{ border:4px solid rgb(190, 173, 174) }
```

If only the border color should be changed use the property `border-color`.

```
.border{ border-color:rgb(190, 173, 174) }
```

If you want to add a box shadow in that color use:

Here you see how a box with a 4 pixel `rgb(190, 173, 174)` colored shadow looks like.

```
.boxshadow{ -moz-box-shadow:4px 4px 4px  
4px rgb(190, 173, 174); -webkit-box-  
shadow:4px 4px 4px 4px rgb(190, 173, 174);  
box-shadow:4px 4px 4px 4px rgb(190, 173,  
174) }
```

Background

The CSS property to change the background color of an element to CIELCh 72, 6.504, 15.120 is called "background". The background property can be set on classes, ids or directly on the HTML element.

```
.background, #background, body{  
background: rgb(190, 173, 174) }
```

If only the background color should be changed can be used:

```
.background{ background-color: rgb(190,  
173, 174) }
```

This example shows the color as background, it is applied via the CSS property "background".

To optimize and compress your CSS code, you can use our [online CSS compressor and optimizer](#) based on csstidy. If you want to create a linear or radial gradient as background or border, check our [CSS Gradient Generator](#).

Hey! You found this booklet interesting? Support Converting Colors with the new Membership Option!

The pro membership hides all ads, plus gives you double the colors in the color bucket, and more awesome pro features!

[Learn more, Memberships starting at \\$2.50/m!](#)

**Follow me
on Twitter!**

@ConvertingColor