

Converting Colors

CIELCh(72, 6.708, 27.351)

Have a look what the booklet for
CIELCh(72, 6.708, 27.351) contains.

CIELCh(72, 6.606, 29.300)	3
<i>Conversions</i>	4
<i>Details</i>	6
<i>Harmonies</i>	11
<i>Previews</i>	20
<i>Color Blindness Simulation</i>	23
<i>CSS Examples</i>	26

Color

CIELCh(72, 6.606, 29.300)

Conversions

Conversions Part 1

Format	Color
Hex	BEADAB
RGB	190, 173, 171
RGB Percent	75%, 68%, 67%
CMY	0.2557, 0.3224, 0.3302
CMYK	0.00, 0.09, 0.10, 0.26
HSL	6°, 13%, 71%
HSV	6°, 10%, 74%
XYZ	43.4162, 43.6590, 44.5628
YIQ	177.8550, 10.7740, 2.9820

Conversions

Conversions Part 2

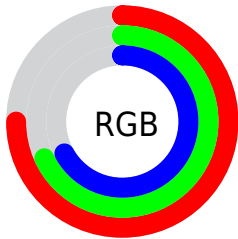
Format	Color
RYB	190, 173, 171
Decimal	12496299
CIELab	72.00, 5.76, 3.23
CIELCh	72, 6.606, 29.300
Yxy	43.6590, 0.3298, 0.3317
Android (android.graphics.Color)	4290686379 (0xFFBEADAB)
YUV	177.8550, -3.3795, 10.6512
Hunter-Lab	66.0750, 1.6566, 6.2656

Details

The CIELCh color $72, 6.606, 29.300$ is a light color, and the websafe version is hex 999999 . A complement of this color would be $75, 6.193, 209.095$, and the grayscale version is $72, 0.009, 296.813$.

A 20% lighter version of the original color is $92, 6.607, 28.718$, and $52, 6.691, 29.973$ is the 20% darker color. If you saturate the color by 10%, you get $67, 13.760, 29.735$, and if you desaturate by 10%, it is $77, 0.010, 325.868$.

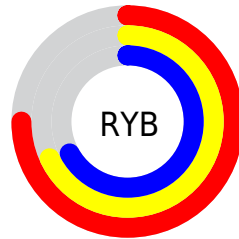
Distribution



Red (75%)

Green (68%)

Blue (67%)



Red (75%)

Yellow (68%)

Blue (67%)

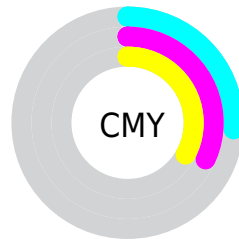


Cyan (0%)

Magenta (9%)

Yellow (10%)

Black (26%)



Cyan (26%)

Magenta (32%)

Yellow (33%)

Brightness & Saturation Gradients

These gradients show how the CIELCh color 72, 6.606, 29.300 changes by changing the brightness by 10 percent. The first figure shows a shift by +10% for each color and the second figure -10%.

Similar to the brightness gradients but the following saturation gradients show a change of the CIELCh color 72, 6.606, 29.300 by changing the saturation by 10% instead.

 72, 6.606, 29.300

 72, 6.606, 29.300

 100, 6.606, 29.300

 62, 6.606, 29.300

 92, 6.606, 29.300

 52, 6.606, 29.300

 42, 6.606, 29.300

 32, 6.606, 29.300

 22, 6.606, 29.300

 12, 6.606, 29.300

 2, 6.606, 29.300

 0, 6.606, 29.300

 72, 6.606, 29.300

 72, 6.606, 29.300

67, 13.760, 29.735

77, 0.010, 325.868

63, 21.502, 30.306

82, 6.088, 209.112

58, 29.838, 31.104

87, 11.725,
209.012

54, 38.730, 32.196

92, 16.958,
208.997

50, 48.072, 33.643

47, 57.660, 35.469

96, 21.163,
198.114

44, 67.106, 37.589

42, 75.598, 39.624

40, 82.115, 41.240

Harmonies

Complementary

The Complementary color scheme is a pair of colors which are on the opposite of each other on the color wheel.



72, 6.606, 29.300



75, 6.193, 209.095

Rectangle

The Rectangle color scheme consists of four colors that form a rectangle on the color wheel.



72, 6.606, 29.300



72, 6.606, 79.300



72, 6.606, 209.300



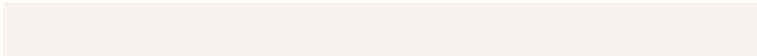
72, 6.606, 259.300

Sweetspot

The Sweet Spot groups the original color and five complimentary colors.



72, 6.605, 29.317



96, 2.386, 28.947



72, 11.714, 327.822



51, 1.830, 29.023



99, 0.012, 296.813



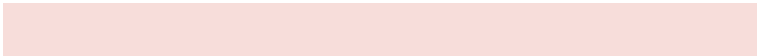
52, 0.007, 296.813

Same Dimension

The Same Dimension uses a secret algorithm to generate beautiful new colors.



72, 6.605, 29.317



90, 9.909, 29.402



74, 6.781, 84.122



37, 3.713, 29.292



33, 71.283, 41.256



3, 11.414, 25.949

Inverse Universe

The Inverse Universe completely reimagines the original color for something new.



75, 6.193, 209.095



94, 9.153, 209.059



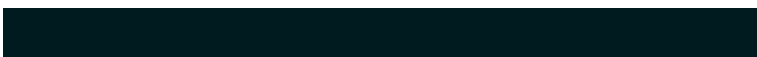
72, 6.722, 266.791



39, 3.497, 209.108



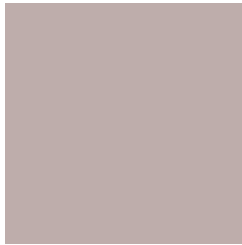
54, 31.129, 215.040



8, 10.172, 211.913

Previews

White Background



This preview shows how the CIELCh color 72, 6.606, 29.300 looks on a white background.

Color Contrast Check

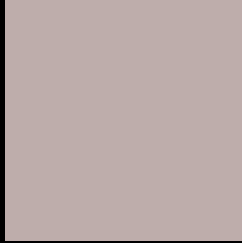
Large Text (above 18pt) WCAG AA × Fail

Any Text WCAG AA × Fail

Large Text (above 18pt) WCAG AAA × Fail

Any Text WCAG AAA × Fail

Black Background



This preview shows how the CIELCh color 72, 6.606, 29.300 looks on a black background.

Color Contrast Check

Large Text (above 18pt) WCAG AA ✓ Pass

Any Text WCAG AA ✓ Pass

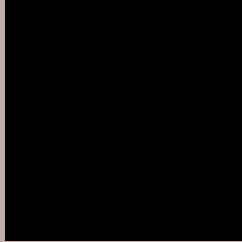
Large Text (above 18pt) WCAG AAA ✓ Pass

Any Text WCAG AAA ✓ Pass

If you want to check with other color combinations, try the [Color Contrast Checker](#).

CIELCh 72, 6.606, 29.300

Background



This preview shows how black text looks on a background with the CIELCh color 72, 6.606, 29.300.



This preview shows how white text looks on a background with the CIELCh color 72, 6.606, 29.300.

Color Blindness Simulation

Color vision deficiency is a very complex topic, and I could not describe the different causes any better than Wikipedia does, so if you want to learn more, you should check out their [article about color blindness](#).

Dichromacy



Original Color


72, 6.606, 29.300

Protanopia

72, 2.865, 68.488

Deuteranopia

72, 9.636, 20.191



Tritanopia
72, 10.599, 338.531

Trichromacy



Original Color
72, 6.606, 29.300

Protanomaly
72, 3.780, 45.007

Deuteranomaly
72, 8.484, 23.721

Tritanomaly
72, 8.137, 352.261

Monochromacy



Original Color
72, 6.606, 29.300

Achromatopsia
73, 0.009, 296.813

Achromatomaly
72, 2.322, 32.873

CSS Examples

Text

The CSS property to change the color of the text to CIELCh 72, 6.606, 29.300 is called "color". The color property can be set on classes, ids or directly on the HTML element.

This example shows how text in the color `rgb(190, 173, 171)` looks like.

```
.text, #text, p{  
    color:rgb(190, 173, 171)  
}
```

If you want to add a text shadow in that color use the text-shadow property, you can generate a text shadow directly with our [CSS Text Shadow Generator](#).

Here you see how black text with a 4 pixel rgb(190, 173, 171) colored shadow looks like.

```
.shadow{ text-shadow: 4px 4px 2px rgb(190, 173, 171) }
```

Border

The CSS property to change the border of an element to CIELCh 72, 6.606, 29.300 is called "border". The border property can be set on classes, ids or directly on the HTML element.

This example shows the color as border, it can be applied via the CSS property "border" or "border-color".

```
.border, #border, table{ border:4px solid rgb(190, 173, 171) }
```

If only the border color should be changed use the property `border-color`.

```
.border{ border-color:rgb(190, 173, 171) }
```

If you want to add a box shadow in that color use:

Here you see how a box with a 4 pixel `rgb(190, 173, 171)` colored shadow looks like.

```
.boxshadow{ -moz-box-shadow:4px 4px 4px  
4px rgb(190, 173, 171); -webkit-box-  
shadow:4px 4px 4px 4px rgb(190, 173, 171);  
box-shadow:4px 4px 4px 4px rgb(190, 173,  
171) }
```

Background

The CSS property to change the background color of an element to CIELCh 72, 6.606, 29.300 is called "background". The background property can be set on classes, ids or directly on the HTML element.

```
.background, #background, body{  
background: rgb(190, 173, 171) }
```

If only the background color should be changed can be used:

```
.background{ background-color: rgb(190,  
173, 171) }
```

This example shows the color as background, it is applied via the CSS property "background".

To optimize and compress your CSS code, you can use our [online CSS compressor and optimizer](#) based on csstidy. If you want to create a linear or radial gradient as background or border, check our [CSS Gradient Generator](#).

Hey! You found this booklet interesting? Support Converting Colors with the new Membership Option!

The pro membership hides all ads, plus gives you double the colors in the color bucket, and more awesome pro features!

[Learn more, Memberships starting at \\$2.50/m!](#)

**Follow me
on Twitter!**

@ConvertingColor