

Converting Colors

CIELCh(72, 7.481, 0.380)

Have a look what the booklet for
CIELCh(72, 7.481, 0.380) contains.

CIELCh(72, 7.709, 359.449)	3
<i>Conversions</i>	4
<i>Details</i>	6
<i>Harmonies</i>	11
<i>Previews</i>	20
<i>Color Blindness Simulation</i>	23
<i>CSS Examples</i>	26

Color

CIELCh(72, 7.709, 359.449)

Conversions

Conversions Part 1

Format	Color
Hex	BFACB1
RGB	191, 172, 177
RGB Percent	75%, 67%, 69%
CMY	0.2517, 0.3262, 0.3066
CMYK	0.00, 0.10, 0.07, 0.25
HSL	344°, 13%, 71%
HSV	344°, 10%, 75%
XYZ	44.0783, 43.6590, 47.6070
YIQ	178.2510, 9.7190, 5.5830

Conversions

Conversions Part 2

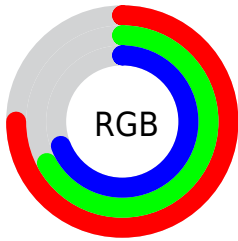
Format	Color
RYB	191, 172, 177
Decimal	12561585
CIELab	72.00, 7.71, -0.07
CIELCh	72, 7.709, 359.449
Yxy	43.6590, 0.3257, 0.3226
Android (android.graphics.Color)	4290751665 (0xFFBFACB1)
YUV	178.2510, -0.6167, 11.1809
Hunter-Lab	66.0750, 3.4454, 3.5341

Details

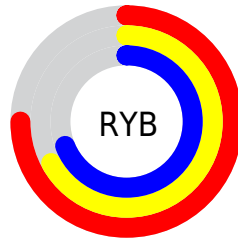
The CIELCh color $72, 7.709, 359.449$ is a light color, and the websafe version is hex 999999 . A complement of this color would be $76, 7.463, 177.728$, and the grayscale version is $73, 0.009, 296.813$.

A 20% lighter version of the original color is $92, 7.841, 356.659$, and $52, 7.675, 2.745$ is the 20% darker color. If you saturate the color by 10%, you get $67, 15.785, 0.587$, and if you desaturate by 10%, it is $77, 0.032, 193.300$.

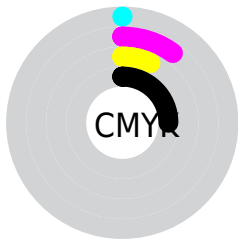
Distribution



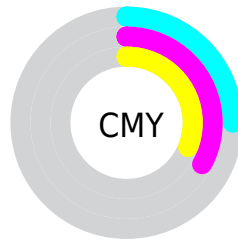
- Red (75%)
- Green (67%)
- Blue (69%)



- Red (75%)
- Yellow (67%)
- Blue (69%)



- Cyan (0%)
- Magenta (10%)
- Yellow (7%)
- Black (25%)



- Cyan (25%)
- Magenta (33%)
- Yellow (31%)

Brightness & Saturation Gradients

These gradients show how the CIELCh color 72, 7.709, 359.449 changes by changing the brightness by 10 percent. The first figure shows a shift by +10% for each color and the second figure -10%.

Similar to the brightness gradients but the following saturation gradients show a change of the CIELCh color 72, 7.709, 359.449 by changing the saturation by 10% instead.

■ 72, 7.709, 359.449

■ 72, 7.709, 359.449

■ 100, 7.709,
359.449

■ 62, 7.709, 359.449

■ 92, 7.709, 359.449

■ 52, 7.709, 359.449

■ 42, 7.709, 359.449

■ 32, 7.709, 359.449

■ 22, 7.709, 359.449

■ 12, 7.709, 359.449

■ 2, 7.709, 359.449

■ 0, 7.709, 359.449

■ 72, 7.709, 359.449

■ 72, 7.709, 359.449

67, 15.785, 0.587

77, 0.032, 193.300

62, 24.134, 1.890

83, 7.406, 177.805

57, 32.622, 3.448

88, 14.417,
177.036

53, 41.034, 5.354

94, 21.084,
176.365

49, 49.066, 7.731

45, 56.359, 10.733

96, 21.661,
187.277

43, 62.595, 14.522

96, 20.858,
198.133

41, 67.651, 19.200

40, 71.931, 24.486

Harmonies

Complementary

The Complementary color scheme is a pair of colors which are on the opposite of each other on the color wheel.



72, 7.709, 359.449



76, 7.463, 177.728

Rectangle

The Rectangle color scheme consists of four colors that form a rectangle on the color wheel.



72, 7.709, 359.449



72, 7.709, 49.449



72, 7.709, 179.449



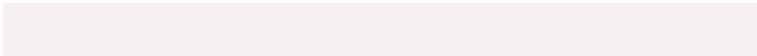
72, 7.709, 229.449

Sweetspot

The Sweet Spot groups the original color and five complimentary colors.



72, 7.707, 359.458



95, 2.826, 358.648



72, 11.595, 317.181



51, 2.163, 358.766



99, 0.012, 296.813



52, 0.007, 296.813

Same Dimension

The Same Dimension uses a secret algorithm to generate beautiful new colors.



72, 7.707, 359.458



90, 11.529, 359.701



73, 6.064, 42.985



37, 4.343, 359.392



33, 62.242, 23.620



3, 12.716, 4.618

Inverse Universe

The Inverse Universe completely reimagines the original color for something new.



72, 7.707, 359.458



90, 11.529, 359.701



75, 5.714, 223.941



37, 4.343, 359.392



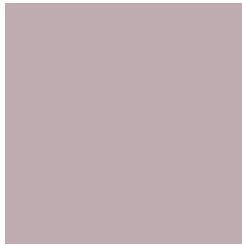
33, 62.242, 23.620



3, 12.716, 4.618

Previews

White Background



This preview shows how the CIELCh color 72, 7.709, 359.449 looks on a white background.

Color Contrast Check

Large Text (above 18pt) WCAG AA × Fail

Any Text WCAG AA × Fail

Large Text (above 18pt) WCAG AAA × Fail

Any Text WCAG AAA × Fail

Black Background



This preview shows how the CIELCh color 72, 7.709, 359.449 looks on a black background.

Color Contrast Check

Large Text (above 18pt) WCAG AA ✓ Pass

Any Text WCAG AA ✓ Pass

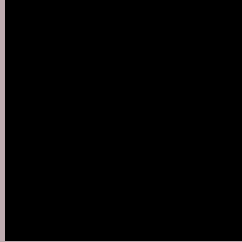
Large Text (above 18pt) WCAG AAA ✓ Pass

Any Text WCAG AAA ✓ Pass

If you want to check with other color combinations, try the [Color Contrast Checker](#).

CIELCh 72, 7.709, 359.449

Background



This preview shows how black text looks on a background with the CIELCh color 72, 7.709, 359.449.



This preview shows how white text looks on a background with the CIELCh color 72, 7.709, 359.449.

Color Blindness Simulation

Color vision deficiency is a very complex topic, and I could not describe the different causes any better than Wikipedia does, so if you want to learn more, you should check out their [article about color blindness](#).

Dichromacy



Original Color

72, 7.709, 359.449

Protanopia

72, 1.997, 324.414

Deuteranopia

72, 8.976, 358.921



Tritanopia
72, 10.599, 338.531

Trichromacy



Original Color
72, 7.709, 359.449

Protanomaly
72, 4.040, 347.077

Deuteranomaly
72, 8.620, 357.950

Tritanomaly
72, 9.615, 345.847

Monochromacy



Original Color
72, 7.709, 359.449

Achromatopsia
73, 0.009, 296.813

Achromatomaly
72, 2.857, 357.149

CSS Examples

Text

The CSS property to change the color of the text to CIELCh 72, 7.709, 359.449 is called "color". The color property can be set on classes, ids or directly on the HTML element.

This example shows how text in the color `rgb(191, 172, 177)` looks like.

```
.text, #text, p{  
    color:rgb(191, 172, 177)  
}
```

If you want to add a text shadow in that color use the text-shadow property, you can generate a text shadow directly with our [CSS Text Shadow Generator](#).

Here you see how black text with a 4 pixel rgb(191, 172, 177) colored shadow looks like.

```
.shadow{ text-shadow: 4px 4px 2px rgb(191, 172, 177) }
```

Border

The CSS property to change the border of an element to CIELCh 72, 7.709, 359.449 is called "border". The border property can be set on classes, ids or directly on the HTML element.

This example shows the color as border, it can be applied via the CSS property "border" or "border-color".

```
.border, #border, table{ border:4px solid rgb(191, 172, 177) }
```

If only the border color should be changed use the property `border-color`.

```
.border{ border-color:rgb(191, 172, 177) }
```

If you want to add a box shadow in that color use:

Here you see how a box with a 4 pixel `rgb(191, 172, 177)` colored shadow looks like.

```
.boxshadow{ -moz-box-shadow:4px 4px 4px  
4px rgb(191, 172, 177); -webkit-box-  
shadow:4px 4px 4px 4px rgb(191, 172, 177);  
box-shadow:4px 4px 4px 4px rgb(191, 172,  
177) }
```

Background

The CSS property to change the background color of an element to CIELCh 72, 7.709, 359.449 is called "background". The background property can be set on classes, ids or directly on the HTML element.

```
.background, #background, body{  
background: rgb(191, 172, 177) }
```

If only the background color should be changed can be used:

```
.background{ background-color: rgb(191,  
172, 177) }
```

This example shows the color as background, it is applied via the CSS property "background".

To optimize and compress your CSS code, you can use our [online CSS compressor and optimizer](#) based on csstidy. If you want to create a linear or radial gradient as background or border, check our [CSS Gradient Generator](#).

Hey! You found this booklet interesting? Support Converting Colors with the new Membership Option!

The pro membership hides all ads, plus gives you double the colors in the color bucket, and more awesome pro features!

[Learn more, Memberships starting at \\$2.50/m!](#)

**Follow me
on Twitter!**

@ConvertingColor