

# Converting Colors

CIELCh(72, 7.666, 1.353)

Have a look what the booklet for  
CIELCh(72, 7.666, 1.353) contains.

<b>CIELCh(72, 7.546, 3.320)</b> .....	3
<i><b>Conversions</b></i> .....	4
<i><b>Details</b></i> .....	6
<i><b>Harmonies</b></i> .....	11
<i><b>Previews</b></i> .....	20
<i><b>Color Blindness Simulation</b></i> .....	23
<i><b>CSS Examples</b></i> .....	26

# **Color**

**CIELCh(72, 7.546, 3.320)**

# Conversions

## Conversions Part 1

Format	Color
Hex	BFACB0
RGB	191, 172, 176
RGB Percent	75%, 67%, 69%
CMY	0.2514, 0.3259, 0.3102
CMYK	0.00, 0.10, 0.08, 0.25
HSL	347°, 13%, 71%
HSV	347°, 10%, 75%
XYZ	44.0185, 43.6590, 47.1277
YIQ	178.1370, 10.0400, 5.2720

# Conversions

## Conversions Part 2

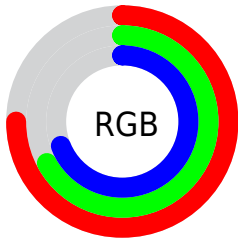
<b>Format</b>	<b>Color</b>
<a href="#">RYB</a>	<a href="#">191, 172, 176</a>
Decimal	<a href="#">12561584</a>
CIELab	<a href="#">72.00, 7.53, 0.44</a>
CIELCh	<a href="#">72, 7.546, 3.320</a>
Yxy	<a href="#">43.6590, 0.3265, 0.3239</a>
Android (android.graphics.Color)	<a href="#">4290751664 (0xFFBFACB0)</a>
YUV	<a href="#">178.1370, -1.0535, 11.2809</a>
Hunter-Lab	<a href="#">66.0750, 3.2836, 3.9642</a>

# Details

The CIELCh color  $72, 7.546, 3.320$  is a light color, and the websafe version is hex  $999999$ . A complement of this color would be  $76, 7.264, 181.642$ , and the grayscale version is  $73, 0.009, 296.813$ .

A 20% lighter version of the original color is  $92, 7.658, 0.214$ , and  $52, 7.283, 1.709$  is the 20% darker color. If you saturate the color by 10%, you get  $67, 15.504, 4.459$ , and if you desaturate by 10%, it is  $77, 0.034, 196.904$ .

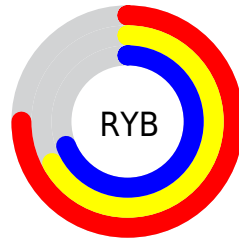
# Distribution



Red (75%)

Green (67%)

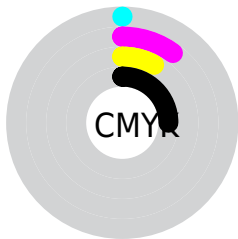
Blue (69%)



Red (75%)

Yellow (67%)

Blue (69%)

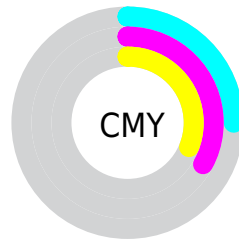


Cyan (0%)

Magenta (10%)

Yellow (8%)

Black (25%)



Cyan (25%)

Magenta (33%)

Yellow (31%)

# Brightness & Saturation Gradients

These gradients show how the CIELCh color 72, 7.546, 3.320 changes by changing the brightness by 10 percent. The first figure shows a shift by +10% for each color and the second figure -10%.

Similar to the brightness gradients but the following saturation gradients show a change of the CIELCh color 72, 7.546, 3.320 by changing the saturation by 10% instead.



 72, 7.546, 3.320

 72, 7.546, 3.320

 100, 7.546, 3.320

 62, 7.546, 3.320

 92, 7.546, 3.320

 52, 7.546, 3.320

 42, 7.546, 3.320

 32, 7.546, 3.320

 22, 7.546, 3.320

 12, 7.546, 3.320

 2, 7.546, 3.320

 0, 7.546, 3.320

 72, 7.546, 3.320

 72, 7.546, 3.320

67, 15.504, 4.459

77, 0.034, 196.904

62, 23.794, 5.776

83, 7.214, 181.716

57, 32.296, 7.367

88, 14.008,  
180.970

53, 40.817, 9.332

94, 20.440,  
180.326

49, 49.075, 11.798

45, 56.736, 14.918

96, 21.128,  
192.868

43, 63.505, 18.834

96, 20.836,  
198.135

41, 69.258, 23.585

40, 74.305, 28.775

# Harmonies

# Complementary

The Complementary color scheme is a pair of colors which are on the opposite of each other on the color wheel.



72, 7.546, 3.320



76, 7.264, 181.642

# Rectangle

The Rectangle color scheme consists of four colors that form a rectangle on the color wheel.



72, 7.546, 3.320



72, 7.546, 53.320



72, 7.546, 183.320



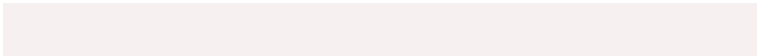
72, 7.546, 233.320

# Sweetspot

The Sweet Spot groups the original color and five complimentary colors.



72, 7.544, 3.330



95, 2.760, 2.519



72, 11.754, 318.724



51, 2.113, 2.639



99, 0.012, 296.813



52, 0.007, 296.813



# Same Dimension

The Same Dimension uses a secret algorithm to generate beautiful new colors.



72, 7.544, 3.330



89, 11.293, 3.572



73, 5.962, 48.846



37, 4.250, 3.265



33, 64.194, 27.938



3, 12.558, 7.474





# Inverse Universe

The Inverse Universe completely reimagines the original color for something new.



72, 7.544, 3.330



89, 11.293, 3.572



74, 5.643, 230.256



37, 4.250, 3.265



33, 64.194, 27.938



3, 12.558, 7.474



# Previews

## White Background



This preview shows how the CIELCh color 72, 7.546, 3.320 looks on a white background.

## Color Contrast Check

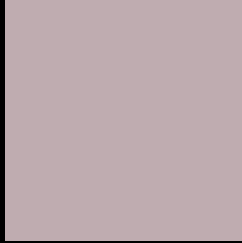
Large Text (above 18pt) WCAG AA × Fail

Any Text WCAG AA × Fail

Large Text (above 18pt) WCAG AAA × Fail

Any Text WCAG AAA × Fail

# Black Background



This preview shows how the CIELCh color 72, 7.546, 3.320 looks on a black background.

## Color Contrast Check

Large Text (above 18pt) WCAG AA ✓ Pass

Any Text WCAG AA ✓ Pass

Large Text (above 18pt) WCAG AAA ✓ Pass

Any Text WCAG AAA ✓ Pass

If you want to check with other color combinations, try the [Color Contrast Checker](#).

# CIELCh 72, 7.546, 3.320

## Background



This preview shows how black text looks on a background with the CIELCh color 72, 7.546, 3.320.



This preview shows how white text looks on a background with the CIELCh color 72, 7.546, 3.320.

# Color Blindness Simulation

Color vision deficiency is a very complex topic, and I could not describe the different causes any better than Wikipedia does, so if you want to learn more, you should check out their [article about color blindness](#).

## Dichromacy



**Original Color**


72, 7.546, 3.320

**Protanopia**

72, 1.578, 335.577

**Deuteranopia**

72, 9.175, 3.014



**Tritanopia**  
72, 10.599, 338.531



# Trichromacy



## Original Color

72, 7.546, 3.320

## Protanomaly

72, 3.212, 359.773

## Deuteranomaly

72, 8.807, 2.228

## Tritanomaly

72, 9.615, 345.847

# Monochromacy



## Original Color

72, 7.546, 3.320

## Achromatopsia

73, 0.009, 296.813

## Achromatomaly

72, 2.696, 7.844

# CSS Examples

## Text

The CSS property to change the color of the text to CIELCh 72, 7.546, 3.320 is called "color". The color property can be set on classes, ids or directly on the HTML element.

This example shows how text in the color `rgb(191, 172, 176)` looks like.

```
.text, #text, p{  
    color:rgb(191, 172, 176)  
}
```

If you want to add a text shadow in that color use the text-shadow property, you can generate a text shadow directly with our [CSS Text Shadow Generator](#).

Here you see how black text with a 4 pixel rgb(191, 172, 176) colored shadow looks like.

```
.shadow{ text-shadow: 4px 4px 2px rgb(191, 172, 176) }
```

## Border

The CSS property to change the border of an element to CIELCh 72, 7.546, 3.320 is called "border". The border property can be set on classes, ids or directly on the HTML element.

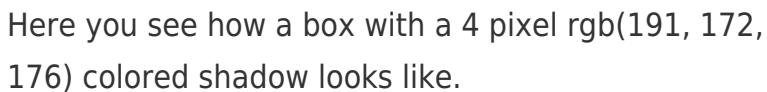
This example shows the color as border, it can be applied via the CSS property "border" or "border-color".

```
.border, #border, table{ border:4px solid rgb(191, 172, 176) }
```

If only the border color should be changed use the property `border-color`.

```
.border{ border-color:rgb(191, 172, 176) }
```

If you want to add a box shadow in that color use:



Here you see how a box with a 4 pixel `rgb(191, 172, 176)` colored shadow looks like.

```
.boxshadow{ -moz-box-shadow:4px 4px 4px 4px rgb(191, 172, 176); -webkit-box-shadow:4px 4px 4px 4px rgb(191, 172, 176); box-shadow:4px 4px 4px 4px rgb(191, 172, 176) }
```

# Background

The CSS property to change the background color of an element to CIELCh 72, 7.546, 3.320 is called "background". The background property can be set on classes, ids or directly on the HTML element.

```
.background, #background, body{  
background: rgb(191, 172, 176) }
```

If only the background color should be changed can be used:

```
.background{ background-color: rgb(191,  
172, 176) }
```

This example shows the color as background, it is applied via the CSS property "background".

To optimize and compress your CSS code, you can use our [online CSS compressor and optimizer](#) based on csstidy. If you want to create a linear or radial gradient as background or border, check our [CSS Gradient Generator](#).

Hey! You found this booklet interesting? Support Converting Colors with the new Membership Option!

The pro membership hides all ads, plus gives you double the colors in the color bucket, and more awesome pro features!

**[Learn more, Memberships starting at \\$2.50/m!](#)**

**Follow me  
on Twitter!**

@ConvertingColor