

Converting Colors

CIELCh(72, 7.711, 336.894)

Have a look what the booklet for
CIELCh(72, 7.711, 336.894) contains.

CIELCh(72, 7.850, 336.182)	3
<i>Conversions</i>	4
<i>Details</i>	6
<i>Harmonies</i>	12
<i>Previews</i>	21
<i>Color Blindness Simulation</i>	24
<i>CSS Examples</i>	27

Color

CIELCh(72, 7.850, 336.182)

Conversions

Conversions Part 1

Format	Color
Hex	BBACB6
RGB	187, 172, 182
RGB Percent	73%, 67%, 71%
CMY	0.2651, 0.3240, 0.2847
CMYK	0.00, 0.08, 0.03, 0.27
HSL	320°, 10%, 71%
HSV	320°, 8%, 73%
XYZ	43.8985, 43.6590, 50.5796
YIQ	177.6250, 5.7300, 6.2900

Conversions

Conversions Part 2

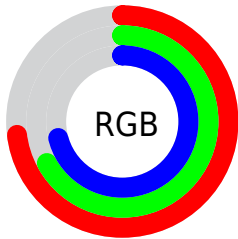
Format	Color
R _Y B	187, 172, 182
Decimal	12299446
CIE Lab	72.00, 7.18, -3.17
CIE LCh	72, 7.850, 336.182
Yxy	43.6590, 0.3178, 0.3161
Android (android.graphics.Color)	4290489526 (0xFFBBACB6)
YUV	177.6250, 2.1569, 8.2219
Hunter-Lab	66.0750, 2.9594, 0.8667

Details

The CIELCh color $72, 7.850, 336.182$ is a light color, and the websafe version is hex 999999 . A complement of this color would be $75, 7.804, 155.143$, and the grayscale version is $73, 0.009, 296.813$.

A 20% lighter version of the original color is $92, 8.083, 335.202$, and $52, 7.672, 337.388$ is the 20% darker color. If you saturate the color by 10%, you get $67, 17.776, 336.946$, and if you desaturate by 10%, it is $77, 1.925, 155.710$.

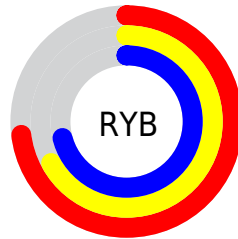
Distribution



Red (73%)

Green (67%)

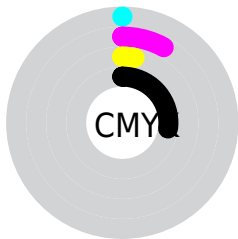
Blue (71%)



Red (73%)

Yellow (67%)

Blue (71%)

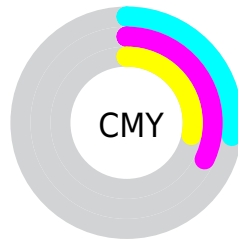


Cyan (0%)

Magenta (8%)

Yellow (3%)

Black (27%)



Cyan (27%)

Magenta (32%)

Yellow (28%)

Brightness & Saturation Gradients

These gradients show how the CIELCh color 72, 7.850, 336.182 changes by changing the brightness by 10 percent. The first figure shows a shift by +10% for each color and the second figure -10%.

Similar to the brightness gradients but the following saturation gradients show a change of the CIELCh color 72, 7.850, 336.182 by changing the saturation by 10% instead.

■ 72, 7.850, 336.182

■ 72, 7.850, 336.182

■ 100, 7.850,
336.182

■ 62, 7.850, 336.182

■ 92, 7.850, 336.182

■ 52, 7.850, 336.182

■ 42, 7.850, 336.182

■ 32, 7.850, 336.182

■ 22, 7.850, 336.182

■ 12, 7.850, 336.182

■ 2, 7.850, 336.182

■ 0, 7.850, 336.182

■ 72, 7.850, 336.182

■ 72, 7.850, 336.182

67, 17.776,
336.946

77, 1.925, 155.710

62, 27.729,
337.745

82, 11.463,
154.920

58, 37.499,
338.607

87, 20.728,
154.301

54, 46.787,
339.550

93, 29.704,
153.727

50, 55.197,
340.603

95, 31.911,
155.826

47, 62.258,
341.808

95, 29.695,
160.209

44, 67.499,
343.227

95, 27.650,
165.239

43, 70.586,
344.940

95, 25.821,
170.998

42, 71.609,

95, 24.261,
177.539

Harmonies

Complementary

The Complementary color scheme is a pair of colors which are on the opposite of each other on the color wheel.



72, 7.850, 336.182



75, 7.804, 155.143

Rectangle

The Rectangle color scheme consists of four colors that form a rectangle on the color wheel.



72, 7.850, 336.182



72, 7.850, 26.182



72, 7.850, 156.182



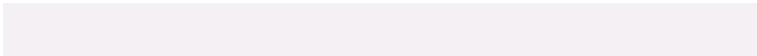
72, 7.850, 206.182

Sweetspot

The Sweet Spot groups the original color and five complimentary colors.



72, 7.848, 336.185



95, 2.427, 335.643



71, 8.424, 303.483



51, 1.380, 335.626



98, 0.011, 296.813



51, 0.007, 296.813

Same Dimension

The Same Dimension uses a secret algorithm to generate beautiful new colors.



72, 7.848, 336.185



90, 12.201, 336.349



72, 5.862, 6.459



37, 5.593, 336.288



35, 63.420, 347.118



3, 15.639, 341.742

Inverse Universe

The Inverse Universe completely reimagines the original color for something new.



72, 7.848, 336.185



90, 12.201, 336.349



75, 5.663, 185.231



37, 5.593, 336.288



35, 63.420, 347.118



3, 15.639, 341.742

Previews

White Background



This preview shows how the CIELCh color 72, 7.850, 336.182 looks on a white background.

Color Contrast Check

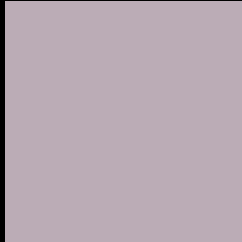
Large Text (above 18pt) WCAG AA × Fail

Any Text WCAG AA × Fail

Large Text (above 18pt) WCAG AAA × Fail

Any Text WCAG AAA × Fail

Black Background



This preview shows how the CIE LCh color 72, 7.850, 336.182 looks on a black background.

Color Contrast Check

Large Text (above 18pt) WCAG AA ✓ Pass

Any Text WCAG AA ✓ Pass

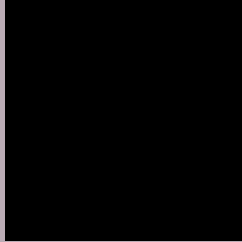
Large Text (above 18pt) WCAG AAA ✓ Pass

Any Text WCAG AAA ✓ Pass

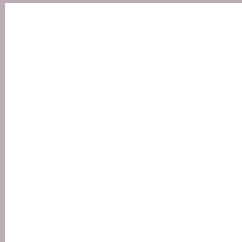
If you want to check with other color combinations, try the [Color Contrast Checker](#).

CIELCh 72, 7.850, 336.182

Background



This preview shows how black text looks on a background with the CIELCh color 72, 7.850, 336.182.



This preview shows how white text looks on a background with the CIELCh color 72, 7.850, 336.182.

Color Blindness Simulation

Color vision deficiency is a very complex topic, and I could not describe the different causes any better than Wikipedia does, so if you want to learn more, you should check out their [article about color blindness](#).

Dichromacy



Original Color

72, 7.850, 336.182

Protanopia

72, 4.381, 295.427

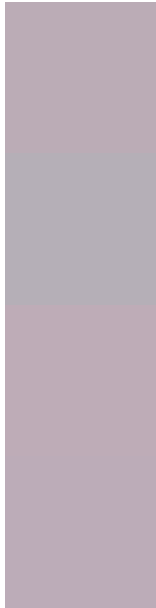
Deuteranopia

72, 9.966, 339.385



Tritanopia
72, 9.287, 330.582

Trichromacy



Original Color
72, 7.850, 336.182

Protanomaly
72, 4.920, 317.441

Deuteranomaly
72, 9.040, 338.781

Tritanomaly
72, 8.883, 332.852

Monochromacy



Original Color
72, 7.850, 336.182

Achromatopsia
73, 0.009, 296.813

Achromatomaly
72, 2.888, 330.598

CSS Examples

Text

The CSS property to change the color of the text to CIELCh 72, 7.850, 336.182 is called "color". The color property can be set on classes, ids or directly on the HTML element.

This example shows how text in the color `rgb(187, 172, 182)` looks like.

```
.text, #text, p{  
    color:rgb(187, 172, 182)  
}
```

If you want to add a text shadow in that color use the text-shadow property, you can generate a text shadow directly with our [CSS Text Shadow Generator](#).

Here you see how black text with a 4 pixel rgb(187, 172, 182) colored shadow looks like.

```
.shadow{ text-shadow: 4px 4px 2px rgb(187, 172, 182) }
```

Border

The CSS property to change the border of an element to CIELCh 72, 7.850, 336.182 is called "border". The border property can be set on classes, ids or directly on the HTML element.

This example shows the color as border, it can be applied via the CSS property "border" or "border-color".

```
.border, #border, table{ border:4px solid rgb(187, 172, 182) }
```

If only the border color should be changed use the property `border-color`.

```
.border{ border-color:rgb(187, 172, 182) }
```

If you want to add a box shadow in that color use:

Here you see how a box with a 4 pixel `rgb(187, 172, 182)` colored shadow looks like.

```
.boxshadow{ -moz-box-shadow:4px 4px 4px  
4px rgb(187, 172, 182); -webkit-box-  
shadow:4px 4px 4px 4px rgb(187, 172, 182);  
box-shadow:4px 4px 4px 4px rgb(187, 172,  
182) }
```

Background

The CSS property to change the background color of an element to CIELCh 72, 7.850, 336.182 is called "background". The background property can be set on classes, ids or directly on the HTML element.

```
.background, #background, body{  
background: rgb(187, 172, 182) }
```

If only the background color should be changed can be used:

```
.background{ background-color: rgb(187,  
172, 182) }
```

This example shows the color as background, it is applied via the CSS property "background".

To optimize and compress your CSS code, you can use our [online CSS compressor and optimizer](#) based on csstidy. If you want to create a linear or radial gradient as background or border, check our [CSS Gradient Generator](#).

Hey! You found this booklet interesting? Support Converting Colors with the new Membership Option!

The pro membership hides all ads, plus gives you double the colors in the color bucket, and more awesome pro features!

[Learn more, Memberships starting at \\$2.50/m!](#)

**Follow me
on Twitter!**

@ConvertingColor