

Converting Colors

CIELCh(72, 7.914, 40.709)

Have a look what the booklet for
CIELCh(72, 7.914, 40.709) contains.

CIELCh(72, 8.049, 43.675)	3
<i>Conversions</i>	4
<i>Details</i>	6
<i>Harmonies</i>	11
<i>Previews</i>	20
<i>Color Blindness Simulation</i>	23
<i>CSS Examples</i>	26

Color

CIELCh(72, 8.049, 43.675)

Conversions

Conversions Part 1

Format	Color
Hex	C0ADA7
RGB	192, 173, 167
RGB Percent	75%, 68%, 65%
CMY	0.2487, 0.3231, 0.3467
CMYK	0.00, 0.10, 0.13, 0.25
HSL	14°, 16%, 70%
HSV	14°, 13%, 75%
XYZ	43.4367, 43.6590, 42.5018
YIQ	177.9970, 13.2500, 2.1620

Conversions

Conversions Part 2

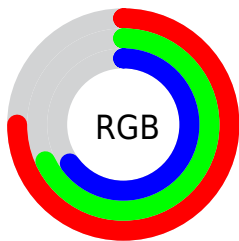
Format	Color
RYB	192, 175, 167
Decimal	12627367
CIELab	72.00, 5.82, 5.56
CIElCh	72, 8.049, 43.675
Yxy	43.6590, 0.3352, 0.3369
Android (android.graphics.Color)	4290817447 (0xFFC0ADA7)
YUV	177.9970, -5.4215, 12.2806
Hunter-Lab	66.0750, 1.7121, 8.1150

Details

The CIELCh color $72, 8.049, 43.675$ is a light color, and the websafe version is hex 999999 . A complement of this color would be $74, 7.437, 224.951$, and the grayscale version is $72, 0.009, 296.813$.

A 20% lighter version of the original color is $92, 8.279, 41.695$, and $52, 7.906, 45.961$ is the 20% darker color. If you saturate the color by 10%, you get $68, 14.805, 43.455$, and if you desaturate by 10%, it is $76, 1.803, 43.823$.

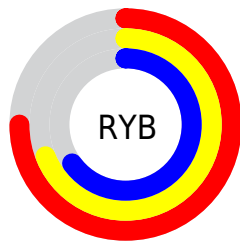
Distribution



Red (75%)

Green (68%)

Blue (65%)



Red (75%)

Yellow (69%)

Blue (65%)

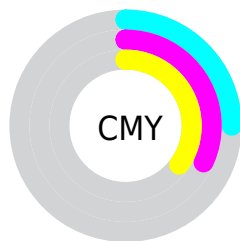


Cyan (0%)

Magenta (10%)

Yellow (13%)

Black (25%)



Cyan (25%)

Magenta (32%)

Yellow (35%)

Brightness & Saturation Gradients

These gradients show how the CIELCh color 72, 8.049, 43.675 changes by changing the brightness by 10 percent. The first figure shows a shift by +10% for each color and the second figure -10%.

Similar to the brightness gradients but the following saturation gradients show a change of the CIELCh color 72, 8.049, 43.675 by changing the saturation by 10% instead.

 72, 8.049, 43.675

 72, 8.049, 43.675

 100, 8.049, 43.675

 62, 8.049, 43.675

 92, 8.049, 43.675

 52, 8.049, 43.675

 42, 8.049, 43.675

 32, 8.049, 43.675

 22, 8.049, 43.675

 12, 8.049, 43.675

 2, 8.049, 43.675

 0, 8.049, 43.675

 72, 8.049, 43.675

 72, 8.049, 43.675

68, 14.805, 43.455

76, 1.803, 43.823

64, 22.116, 43.316

81, 3.980, 224.656

60, 30.007, 43.317

85, 9.352, 225.044

56, 38.472, 43.488

89, 14.361,
225.518

53, 47.442, 43.841

93, 18.015,
214.446

49, 56.730, 44.341

47, 65.895, 44.835

96, 20.632,
198.148

44, 73.966, 44.908

43, 78.677, 44.800

Harmonies

Complementary

The Complementary color scheme is a pair of colors which are on the opposite of each other on the color wheel.



72, 8.049, 43.675



74, 7.437, 224.951

Rectangle

The Rectangle color scheme consists of four colors that form a rectangle on the color wheel.



72, 8.049, 43.675



72, 8.049, 93.675



72, 8.049, 223.675



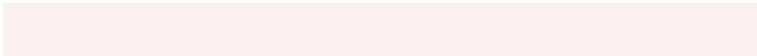
72, 8.049, 273.675

Sweetspot

The Sweet Spot groups the original color and five complimentary colors.



72, 8.048, 43.691



96, 2.955, 43.857



71, 14.031, 332.534



51, 2.106, 43.862



99, 0.012, 296.813



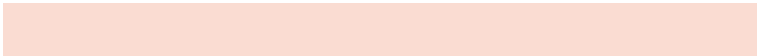
52, 0.007, 296.813

Same Dimension

The Same Dimension uses a secret algorithm to generate beautiful new colors.



72, 8.048, 43.691



90, 12.411, 43.608



75, 10.165, 94.525



39, 3.480, 43.786



36, 68.722, 45.170



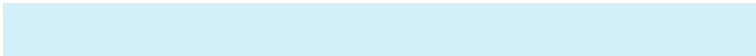
5, 12.179, 34.684

Inverse Universe

The Inverse Universe completely reimagines the original color for something new.



74, 7.437, 224.951



93, 11.227, 225.145



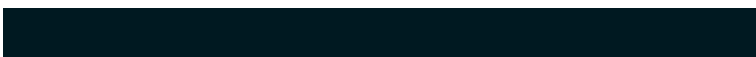
71, 10.239, 277.784



40, 3.293, 224.764



48, 31.972, 243.660



7, 10.343, 234.839

Previews

White Background



This preview shows how the CIELCh color 72, 8.049, 43.675 looks on a white background.

Color Contrast Check

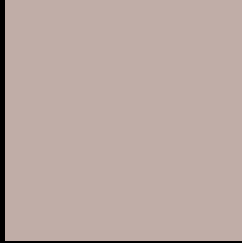
Large Text (above 18pt) WCAG AA × Fail

Any Text WCAG AA × Fail

Large Text (above 18pt) WCAG AAA × Fail

Any Text WCAG AAA × Fail

Black Background



This preview shows how the CIELCh color 72, 8.049, 43.675 looks on a black background.

Color Contrast Check

Large Text (above 18pt) WCAG AA ✓ Pass

Any Text WCAG AA ✓ Pass

Large Text (above 18pt) WCAG AAA ✓ Pass

Any Text WCAG AAA ✓ Pass

If you want to check with other color combinations, try the [Color Contrast Checker](#).

CIELCh 72, 8.049, 43.675

Background



This preview shows how black text looks on a background with the CIELCh color 72, 8.049, 43.675.



This preview shows how white text looks on a background with the CIELCh color 72, 8.049, 43.675.

Color Blindness Simulation

Color vision deficiency is a very complex topic, and I could not describe the different causes any better than Wikipedia does, so if you want to learn more, you should check out their [article about color blindness](#).

Dichromacy



Original Color

72, 8.049, 43.675

Protanopia

72, 4.893, 81.721

Deuteranopia

72, 10.353, 32.235



Tritanopia
72, 11.475, 342.439

Trichromacy



Original Color
72, 8.049, 43.675

Protanomaly
72, 5.787, 68.021

Deuteranomaly
72, 9.342, 36.875

Tritanomaly
72, 8.976, 358.921

Monochromacy



Original Color
72, 8.049, 43.675

Achromatopsia
73, 0.009, 296.813

Achromatomaly
72, 2.852, 41.760

CSS Examples

Text

The CSS property to change the color of the text to CIELCh 72, 8.049, 43.675 is called "color". The color property can be set on classes, ids or directly on the HTML element.

This example shows how text in the color `rgb(192, 173, 167)` looks like.

```
.text, #text, p{  
    color:rgb(192, 173, 167)  
}
```

If you want to add a text shadow in that color use the text-shadow property, you can generate a text shadow directly with our [CSS Text Shadow Generator](#).

Here you see how black text with a 4 pixel rgb(192, 173, 167) colored shadow looks like.

```
.shadow{ text-shadow: 4px 4px 2px rgb(192, 173, 167) }
```

Border

The CSS property to change the border of an element to CIELCh 72, 8.049, 43.675 is called "border". The border property can be set on classes, ids or directly on the HTML element.

This example shows the color as border, it can be applied via the CSS property "border" or "border-color".

```
.border, #border, table{ border:4px solid rgb(192, 173, 167) }
```

If only the border color should be changed use the property `border-color`.

```
.border{ border-color:rgb(192, 173, 167) }
```

If you want to add a box shadow in that color use:

Here you see how a box with a 4 pixel `rgb(192, 173, 167)` colored shadow looks like.

```
.boxshadow{ -moz-box-shadow:4px 4px 4px  
4px rgb(192, 173, 167); -webkit-box-  
shadow:4px 4px 4px 4px rgb(192, 173, 167);  
box-shadow:4px 4px 4px 4px rgb(192, 173,  
167) }
```

Background

The CSS property to change the background color of an element to CIELCh 72, 8.049, 43.675 is called "background". The background property can be set on classes, ids or directly on the HTML element.

```
.background, #background, body{  
background: rgb(192, 173, 167) }
```

If only the background color should be changed can be used:

```
.background{ background-color: rgb(192,  
173, 167) }
```

This example shows the color as background, it is applied via the CSS property "background".

To optimize and compress your CSS code, you can use our [online CSS compressor and optimizer](#) based on csstidy. If you want to create a linear or radial gradient as background or border, check our [CSS Gradient Generator](#).

Hey! You found this booklet interesting? Support Converting Colors with the new Membership Option!

The pro membership hides all ads, plus gives you double the colors in the color bucket, and more awesome pro features!

[Learn more, Memberships starting at \\$2.50/m!](#)

**Follow me
on Twitter!**

@ConvertingColor