

Converting Colors

CIELCh(72, 8.146, 20.034)

Have a look what the booklet for
CIELCh(72, 8.146, 20.034) contains.

CIELCh(72, 8.058, 20.039)	3
<i>Conversions</i>	4
<i>Details</i>	6
<i>Harmonies</i>	11
<i>Previews</i>	20
<i>Color Blindness Simulation</i>	23
<i>CSS Examples</i>	26

Color

CIELCh(72, 8.058, 20.039)

Conversions

Conversions Part 1

Format	Color
Hex	C1ACAC
RGB	193, 172, 172
RGB Percent	76%, 67%, 67%
CMY	0.2443, 0.3266, 0.3266
CMYK	0.00, 0.11, 0.11, 0.24
HSL	0°, 14%, 71%
HSV	0°, 11%, 76%
XYZ	44.0310, 43.6590, 44.9889
YIQ	178.2790, 12.5160, 4.4520

Conversions

Conversions Part 2

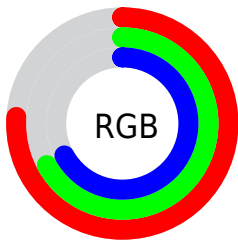
Format	Color
RYB	193, 172, 172
Decimal	12692652
CIELab	72.00, 7.57, 2.76
CIELCh	72, 8.058, 20.039
Yxy	43.6590, 0.3319, 0.3291
Android (android.graphics.Color)	4290882732 (0xFFC1ACAC)
YUV	178.2790, -3.0955, 12.9103
Hunter-Lab	66.0750, 3.3176, 5.8833

Details

The CIELCh color $72, 8.058, 20.039$ is a light color, and the websafe version is hex 999999 . A complement of this color would be $76, 7.523, 198.903$, and the grayscale version is $73, 0.009, 296.813$.

A 20% lighter version of the original color is $92, 8.356, 19.918$, and $52, 7.819, 20.236$ is the 20% darker color. If you saturate the color by 10%, you get $67, 16.067, 20.916$, and if you desaturate by 10%, it is $77, 0.637, 18.631$.

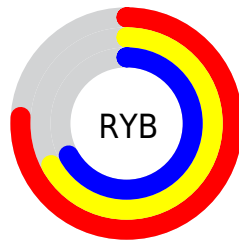
Distribution



Red (76%)

Green (67%)

Blue (67%)



Red (76%)

Yellow (67%)

Blue (67%)

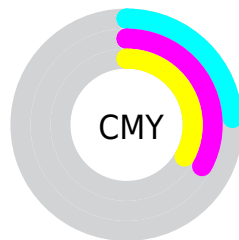


Cyan (0%)

Magenta (11%)

Yellow (11%)

Black (24%)



Cyan (24%)

Magenta (33%)

Yellow (33%)

Brightness & Saturation Gradients

These gradients show how the CIELCh color 72, 8.058, 20.039 changes by changing the brightness by 10 percent. The first figure shows a shift by +10% for each color and the second figure -10%.

Similar to the brightness gradients but the following saturation gradients show a change of the CIELCh color 72, 8.058, 20.039 by changing the saturation by 10% instead.

 72, 8.058, 20.039

 72, 8.058, 20.039

 100, 8.058, 20.039

 62, 8.058, 20.039

 92, 8.058, 20.039

 52, 8.058, 20.039

 42, 8.058, 20.039

 32, 8.058, 20.039

 22, 8.058, 20.039

 12, 8.058, 20.039

 2, 8.058, 20.039

 0, 8.058, 20.039

 72, 8.058, 20.039

 72, 8.058, 20.039

67, 16.067, 20.916

77, 0.637, 18.631

61, 24.672, 22.006

83, 6.226, 199.054

57, 33.820, 23.422

89, 12.581,
198.609

52, 43.386, 25.268

94, 18.483,
198.274

48, 53.153, 27.652

45, 62.806, 30.636

96, 20.301,
198.168

42, 71.898, 34.111

41, 79.578, 37.533

40, 84.703, 40.002

Harmonies

Complementary

The Complementary color scheme is a pair of colors which are on the opposite of each other on the color wheel.



72, 8.058, 20.039



76, 7.523, 198.903

Rectangle

The Rectangle color scheme consists of four colors that form a rectangle on the color wheel.



72, 8.058, 20.039



72, 8.058, 70.039



72, 8.058, 200.039



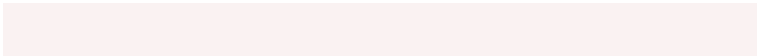
72, 8.058, 250.039

Sweetspot

The Sweet Spot groups the original color and five complimentary colors.



72, 8.057, 20.052



96, 2.658, 19.354



73, 13.832, 325.016



51, 2.021, 19.455



99, 0.012, 296.813



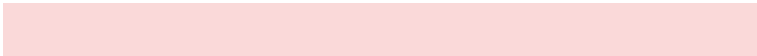
52, 0.007, 296.813

Same Dimension

The Same Dimension uses a secret algorithm to generate beautiful new colors.



72, 8.057, 20.052



89, 11.982, 20.238



75, 6.927, 74.051



38, 4.187, 19.932



33, 73.726, 39.726



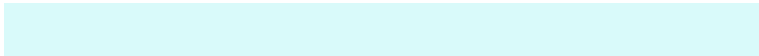
3, 13.998, 19.413

Inverse Universe

The Inverse Universe completely reimagines the original color for something new.



76, 7.523, 198.903



96, 11.019, 198.772



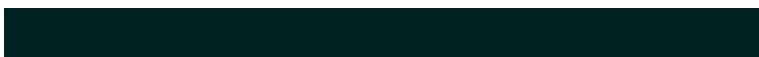
74, 6.749, 256.895



40, 3.948, 198.993



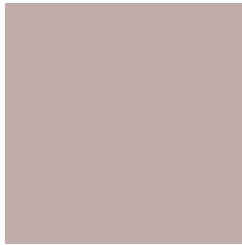
60, 35.467, 196.409



11, 12.442, 196.409

Previews

White Background



This preview shows how the CIELCh color 72, 8.058, 20.039 looks on a white background.

Color Contrast Check

Large Text (above 18pt) WCAG AA × Fail

Any Text WCAG AA × Fail

Large Text (above 18pt) WCAG AAA × Fail

Any Text WCAG AAA × Fail

Black Background



This preview shows how the CIE LCh color 72, 8.058, 20.039 looks on a black background.

Color Contrast Check

Large Text (above 18pt) WCAG AA ✓ Pass

Any Text WCAG AA ✓ Pass

Large Text (above 18pt) WCAG AAA ✓ Pass

Any Text WCAG AAA ✓ Pass

If you want to check with other color combinations, try the [Color Contrast Checker](#).

CIELCh 72, 8.058, 20.039

Background



This preview shows how black text looks on a background with the CIELCh color 72, 8.058, 20.039.



This preview shows how white text looks on a background with the CIELCh color 72, 8.058, 20.039.

Color Blindness Simulation

Color vision deficiency is a very complex topic, and I could not describe the different causes any better than Wikipedia does, so if you want to learn more, you should check out their [article about color blindness](#).

Dichromacy



Original Color

72, 8.058, 20.039

Protanopia

72, 1.846, 55.193

Deuteranopia

72, 9.240, 16.808



Tritanopia
72, 11.475, 342.439

Trichromacy



Original Color
72, 8.058, 20.039

Protanomaly
72, 4.212, 27.030

Deuteranomaly
72, 8.849, 16.621

Tritanomaly
72, 9.742, 353.806

Monochromacy



Original Color
72, 8.058, 20.039

Achromatopsia
73, 0.009, 296.813

Achromatomaly
72, 2.639, 19.438

CSS Examples

Text

The CSS property to change the color of the text to CIELCh 72, 8.058, 20.039 is called "color". The color property can be set on classes, ids or directly on the HTML element.

This example shows how text in the color `rgb(193, 172, 172)` looks like.

```
.text, #text, p{  
    color:rgb(193, 172, 172)  
}
```

If you want to add a text shadow in that color use the text-shadow property, you can generate a text shadow directly with our [CSS Text Shadow Generator](#).

Here you see how black text with a 4 pixel rgb(193, 172, 172) colored shadow looks like.

```
.shadow{ text-shadow: 4px 4px 2px rgb(193, 172, 172) }
```

Border

The CSS property to change the border of an element to CIELCh 72, 8.058, 20.039 is called "border". The border property can be set on classes, ids or directly on the HTML element.

This example shows the color as border, it can be applied via the CSS property "border" or "border-color".

```
.border, #border, table{ border:4px solid rgb(193, 172, 172) }
```

If only the border color should be changed use the property `border-color`.

```
.border{ border-color:rgb(193, 172, 172) }
```

If you want to add a box shadow in that color use:

Here you see how a box with a 4 pixel `rgb(193, 172, 172)` colored shadow looks like.

```
.boxshadow{ -moz-box-shadow:4px 4px 4px  
4px rgb(193, 172, 172); -webkit-box-  
shadow:4px 4px 4px 4px rgb(193, 172, 172);  
box-shadow:4px 4px 4px 4px rgb(193, 172,  
172) }
```

Background

The CSS property to change the background color of an element to CIELCh 72, 8.058, 20.039 is called "background". The background property can be set on classes, ids or directly on the HTML element.

```
.background, #background, body{  
background: rgb(193, 172, 172) }
```

If only the background color should be changed can be used:

```
.background{ background-color: rgb(193,  
172, 172) }
```

This example shows the color as background, it is applied via the CSS property "background".

To optimize and compress your CSS code, you can use our [online CSS compressor and optimizer](#) based on csstidy. If you want to create a linear or radial gradient as background or border, check our [CSS Gradient Generator](#).

Hey! You found this booklet interesting? Support Converting Colors with the new Membership Option!

The pro membership hides all ads, plus gives you double the colors in the color bucket, and more awesome pro features!

[Learn more, Memberships starting at \\$2.50/m!](#)

**Follow me
on Twitter!**

@ConvertingColor