

Converting Colors

CIELCh(72, 8.459, 16.421)

Have a look what the booklet for
CIELCh(72, 8.459, 16.421) contains.

CIELCh(72, 8.459, 16.421)	3
<i>Conversions</i>	4
<i>Details</i>	6
<i>Harmonies</i>	11
<i>Previews</i>	20
<i>Color Blindness Simulation</i>	23
<i>CSS Examples</i>	26

Color

CIELCh(72, 8.459, 16.421)

Conversions

Conversions Part 1

Format	Color
Hex	C1ABAC
RGB	193, 171, 172
RGB Percent	76%, 67%, 67%
CMY	0.2416, 0.3278, 0.3239
CMYK	0.00, 0.11, 0.11, 0.24
HSL	357°, 15%, 72%
HSV	357°, 11%, 76%
XYZ	44.2170, 43.6590, 45.3248
YIQ	177.6920, 12.7910, 4.9750

Conversions

Conversions Part 2

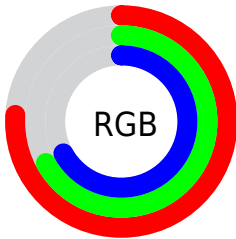
Format	Color
R _Y B	193, 171, 172
Decimal	12692396
CIE Lab	72.00, 8.11, 2.39
CIE LCh	72, 8.459, 16.421
Yxy	43.6590, 0.3320, 0.3278
Android (android.graphics.Color)	4290882476 (0xFFC1ABAC)
YUV	177.6920, -2.8062, 13.4251
Hunter-Lab	66.0750, 3.8199, 5.5819

Details

The CIELCh color $72, 8.459, 16.421$ is a light color, and the websafe version is hex 999999 . A complement of this color would be $77, 7.919, 194.964$, and the grayscale version is $73, 0.009, 296.813$.

A 20% lighter version of the original color is $92, 8.736, 16.580$, and $52, 8.248, 16.297$ is the 20% darker color. If you saturate the color by 10%, you get $67, 16.472, 17.407$, and if you desaturate by 10%, it is $77, 0.989, 15.201$.

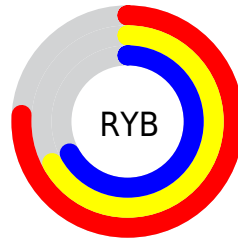
Distribution



Red (76%)

Green (67%)

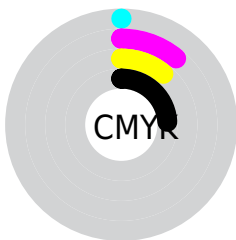
Blue (67%)



Red (76%)

Yellow (67%)

Blue (67%)

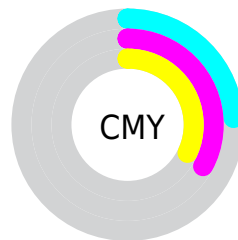


Cyan (0%)

Magenta (11%)

Yellow (11%)

Black (24%)



Cyan (24%)

Magenta (33%)

Yellow (32%)

Brightness & Saturation Gradients

These gradients show how the CIELCh color 72, 8.459, 16.421 changes by changing the brightness by 10 percent. The first figure shows a shift by +10% for each color and the second figure -10%.

Similar to the brightness gradients but the following saturation gradients show a change of the CIELCh color 72, 8.459, 16.421 by changing the saturation by 10% instead.

 72, 8.459, 16.421  72, 8.459, 16.421

 100, 8.459, 16.421  62, 8.459, 16.421

 92, 8.459, 16.421  52, 8.459, 16.421

 42, 8.459, 16.421

 32, 8.459, 16.421

 22, 8.459, 16.421

 12, 8.459, 16.421

 2, 8.459, 16.421

 0, 8.459, 16.421

 72, 8.459, 16.421  72, 8.459, 16.421

67, 16.472, 17.407

77, 0.989, 15.201

62, 25.019, 18.611

83, 5.954, 195.212

57, 34.029, 20.141

89, 12.413,
194.657

52, 43.358, 22.107

94, 18.433,
194.218

48, 52.772, 24.626

45, 61.969, 27.790

96, 20.091,
198.182

43, 70.593, 31.562

41, 78.107, 35.559

40, 83.016, 38.298

Harmonies

Complementary

The Complementary color scheme is a pair of colors which are on the opposite of each other on the color wheel.



72, 8.459, 16.421



77, 7.919, 194.964

Rectangle

The Rectangle color scheme consists of four colors that form a rectangle on the color wheel.



72, 8.459, 16.421



72, 8.459, 66.421



72, 8.459, 196.421



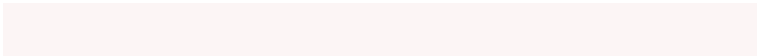
72, 8.459, 246.421

Sweetspot

The Sweet Spot groups the original color and five complimentary colors.



72, 8.457, 16.433



97, 2.687, 15.612



72, 14.274, 323.664



52, 2.059, 15.722



0, 0.000, 0.000



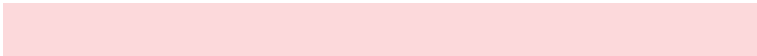
53, 0.007, 296.813

Same Dimension

The Same Dimension uses a secret algorithm to generate beautiful new colors.



72, 8.457, 16.433



90, 13.053, 16.693



75, 7.067, 68.474



38, 4.190, 16.253



33, 71.957, 37.873



3, 14.021, 16.930

Inverse Universe

The Inverse Universe completely reimagines the original color for something new.



72, 8.457, 16.433



90, 13.053, 16.693



74, 6.813, 251.286



38, 4.190, 16.253



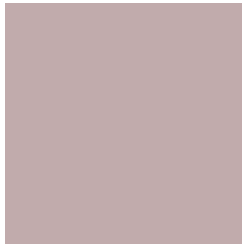
33, 71.957, 37.873



3, 14.021, 16.930

Previews

White Background



This preview shows how the CIELCh color 72, 8.459, 16.421 looks on a white background.

Color Contrast Check

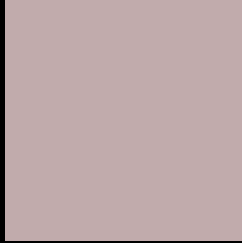
Large Text (above 18pt) WCAG AA × Fail

Any Text WCAG AA × Fail

Large Text (above 18pt) WCAG AAA × Fail

Any Text WCAG AAA × Fail

Black Background



This preview shows how the CIE LCh color 72, 8.459, 16.421 looks on a black background.

Color Contrast Check

Large Text (above 18pt) WCAG AA ✓ Pass

Any Text WCAG AA ✓ Pass

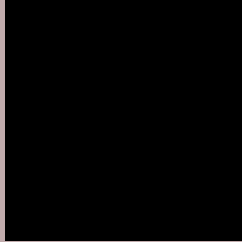
Large Text (above 18pt) WCAG AAA ✓ Pass

Any Text WCAG AAA ✓ Pass

If you want to check with other color combinations, try the [Color Contrast Checker](#).

CIELCh 72, 8.459, 16.421

Background



This preview shows how black text looks on a background with the CIELCh color 72, 8.459, 16.421.



This preview shows how white text looks on a background with the CIELCh color 72, 8.459, 16.421.

Color Blindness Simulation

Color vision deficiency is a very complex topic, and I could not describe the different causes any better than Wikipedia does, so if you want to learn more, you should check out their [article about color blindness](#).

Dichromacy



Original Color

72, 8.459, 16.421

Protanopia

72, 1.593, 39.106

Deuteranopia

72, 9.269, 13.471



Tritanopia
72, 11.774, 343.618

Trichromacy



Original Color
72, 8.459, 16.421

Protanomaly
72, 4.173, 19.642

Deuteranomaly
72, 8.881, 13.137

Tritanomaly
72, 9.742, 353.806

Monochromacy



Original Color
72, 8.459, 16.421

Achromatopsia
73, 0.009, 296.813

Achromatomaly
72, 3.019, 19.494

CSS Examples

Text

The CSS property to change the color of the text to CIELCh 72, 8.459, 16.421 is called "color". The color property can be set on classes, ids or directly on the HTML element.

This example shows how text in the color `rgb(193, 171, 172)` looks like.

```
.text, #text, p{  
    color:rgb(193, 171, 172)  
}
```

If you want to add a text shadow in that color use the text-shadow property, you can generate a text shadow directly with our [CSS Text Shadow Generator](#).

Here you see how black text with a 4 pixel rgb(193, 171, 172) colored shadow looks like.

```
.shadow{ text-shadow: 4px 4px 2px rgb(193, 171, 172) }
```

Border

The CSS property to change the border of an element to CIELCh 72, 8.459, 16.421 is called "border". The border property can be set on classes, ids or directly on the HTML element.

This example shows the color as border, it can be applied via the CSS property "border" or "border-color".

```
.border, #border, table{ border:4px solid rgb(193, 171, 172) }
```

If only the border color should be changed use the property `border-color`.

```
.border{ border-color:rgb(193, 171, 172) }
```

If you want to add a box shadow in that color use:

Here you see how a box with a 4 pixel `rgb(193, 171, 172)` colored shadow looks like.

```
.boxshadow{ -moz-box-shadow:4px 4px 4px  
4px rgb(193, 171, 172); -webkit-box-  
shadow:4px 4px 4px 4px rgb(193, 171, 172);  
box-shadow:4px 4px 4px 4px rgb(193, 171,  
172) }
```

Background

The CSS property to change the background color of an element to CIELCh 72, 8.459, 16.421 is called "background". The background property can be set on classes, ids or directly on the HTML element.

```
.background, #background, body{  
background: rgb(193, 171, 172) }
```

If only the background color should be changed can be used:

```
.background{ background-color: rgb(193,  
171, 172) }
```

This example shows the color as background, it is applied via the CSS property "background".

To optimize and compress your CSS code, you can use our [online CSS compressor and optimizer](#) based on csstidy. If you want to create a linear or radial gradient as background or border, check our [CSS Gradient Generator](#).

Hey! You found this booklet interesting? Support Converting Colors with the new Membership Option!

The pro membership hides all ads, plus gives you double the colors in the color bucket, and more awesome pro features!

[Learn more, Memberships starting at \\$2.50/m!](#)

**Follow me
on Twitter!**

@ConvertingColor