

Converting Colors

CIELCh(72, 8.870, 355.810)

Have a look what the booklet for
CIELCh(72, 8.870, 355.810) contains.

CIELCh(72, 8.828, 354.674)	3
<i>Conversions</i>	4
<i>Details</i>	6
<i>Harmonies</i>	11
<i>Previews</i>	20
<i>Color Blindness Simulation</i>	23
<i>CSS Examples</i>	26

Color

CIELCh(72, 8.828, 354.674)

Conversions

Conversions Part 1

Format	Color
Hex	C0ABB2
RGB	192, 171, 178
RGB Percent	75%, 67%, 70%
CMY	0.2462, 0.3286, 0.3012
CMYK	0.00, 0.11, 0.07, 0.25
HSL	340°, 14%, 71%
HSV	340°, 11%, 75%
XYZ	44.4488, 43.6590, 48.3116
YIQ	178.0770, 10.2690, 6.6290

Conversions

Conversions Part 2

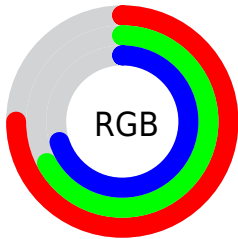
Format	Color
R _{YB}	192, 171, 178
Decimal	12626866
CIE Lab	72.00, 8.79, -0.82
CIE LCh	72, 8.828, 354.674
Yxy	43.6590, 0.3258, 0.3200
Android (android.graphics.Color)	4290816946 (0xFFC0ABB2)
YUV	178.0770, -0.0380, 12.2105
Hunter-Lab	66.0750, 4.4462, 2.9018

Details

The CIELCh color $72, 8.828, 354.674$ is a light color, and the websafe version is hex 999999 . A complement of this color would be $76, 8.585, 172.752$, and the grayscale version is $73, 0.009, 296.813$.

A 20% lighter version of the original color is $92, 8.932, 352.474$, and $52, 8.451, 356.128$ is the 20% darker color. If you saturate the color by 10%, you get $67, 17.197, 355.790$, and if you desaturate by 10%, it is $77, 0.738, 353.171$.

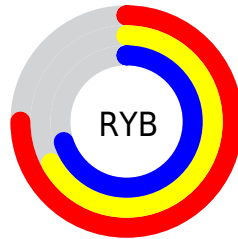
Distribution



Red (75%)

Green (67%)

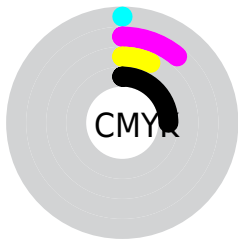
Blue (70%)



Red (75%)

Yellow (67%)

Blue (70%)

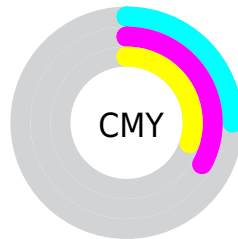


Cyan (0%)

Magenta (11%)

Yellow (7%)

Black (25%)



Cyan (25%)

Magenta (33%)

Yellow (30%)

Brightness & Saturation Gradients

These gradients show how the CIELCh color 72, 8.828, 354.674 changes by changing the brightness by 10 percent. The first figure shows a shift by +10% for each color and the second figure -10%.

Similar to the brightness gradients but the following saturation gradients show a change of the CIELCh color 72, 8.828, 354.674 by changing the saturation by 10% instead.

■ 72, 8.828, 354.674

■ 72, 8.828, 354.674

■ 100, 8.828,
354.674

■ 62, 8.828, 354.674

■ 92, 8.828, 354.674

■ 52, 8.828, 354.674

■ 42, 8.828, 354.674

■ 32, 8.828, 354.674

■ 22, 8.828, 354.674

■ 12, 8.828, 354.674

■ 2, 8.828, 354.674

■ 0, 8.828, 354.674

■ 72, 8.828, 354.674

■ 72, 8.828, 354.674

67, 17.197,
355.790

77, 0.738, 353.171

62, 25.760,
357.061

83, 7.024, 173.009

57, 34.352,
358.562

88, 14.449,
172.224

53, 42.722, 0.380

93, 21.545,
171.533

49, 50.526, 2.629

96, 22.090,
180.788

46, 57.367, 5.462

96, 20.447,
198.159

43, 62.899, 9.051

41, 67.001, 13.541

41, 69.926, 18.226

Harmonies

Complementary

The Complementary color scheme is a pair of colors which are on the opposite of each other on the color wheel.



72, 8.828, 354.674



76, 8.585, 172.752

Rectangle

The Rectangle color scheme consists of four colors that form a rectangle on the color wheel.



72, 8.828, 354.674



72, 8.828, 44.674



72, 8.828, 174.674



72, 8.828, 224.674

Sweetspot

The Sweet Spot groups the original color and five complimentary colors.



72, 8.826, 354.681



96, 2.957, 353.789



72, 12.600, 315.108



51, 2.244, 353.903



99, 0.012, 296.813



52, 0.007, 296.813

Same Dimension

The Same Dimension uses a secret algorithm to generate beautiful new colors.



72, 8.826, 354.681



90, 13.050, 354.924



73, 6.981, 35.583



38, 4.597, 354.517



34, 61.021, 17.400



3, 14.752, 1.784

Inverse Universe

The Inverse Universe completely reimagines the original color for something new.



72, 8.826, 354.681



90, 13.050, 354.924



75, 6.511, 215.913



38, 4.597, 354.517



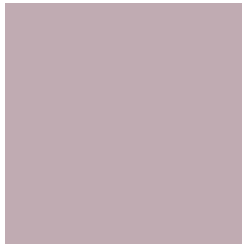
34, 61.021, 17.400



3, 14.752, 1.784

Previews

White Background



This preview shows how the CIELCh color 72, 8.828, 354.674 looks on a white background.

Color Contrast Check

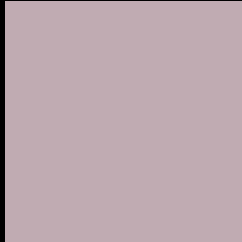
Large Text (above 18pt) WCAG AA × Fail

Any Text WCAG AA × Fail

Large Text (above 18pt) WCAG AAA × Fail

Any Text WCAG AAA × Fail

Black Background



This preview shows how the CIE LCh color 72, 8.828, 354.674 looks on a black background.

Color Contrast Check

Large Text (above 18pt) WCAG AA ✓ Pass

Any Text WCAG AA ✓ Pass

Large Text (above 18pt) WCAG AAA ✓ Pass

Any Text WCAG AAA ✓ Pass

If you want to check with other color combinations, try the [Color Contrast Checker](#).

CIELCh 72, 8.828, 354.674

Background



This preview shows how black text looks on a background with the CIELCh color 72, 8.828, 354.674.



This preview shows how white text looks on a background with the CIELCh color 72, 8.828, 354.674.

Color Blindness Simulation

Color vision deficiency is a very complex topic, and I could not describe the different causes any better than Wikipedia does, so if you want to learn more, you should check out their [article about color blindness](#).

Dichromacy



Original Color

72, 8.828, 354.674

Protanopia

72, 2.837, 305.607

Deuteranopia

72, 9.175, 355.748



Tritanopia
72, 11.523, 339.093

Trichromacy



Original Color
72, 8.828, 354.674

Protanomaly
72, 4.717, 335.935

Deuteranomaly
72, 9.175, 355.748

Tritanomaly
72, 10.855, 343.443

Monochromacy



Original Color
72, 8.828, 354.674

Achromatopsia
73, 0.009, 296.813

Achromatomaly
72, 2.857, 357.149

CSS Examples

Text

The CSS property to change the color of the text to CIELCh 72, 8.828, 354.674 is called "color". The color property can be set on classes, ids or directly on the HTML element.

This example shows how text in the color `rgb(192, 171, 178)` looks like.

```
.text, #text, p{  
    color:rgb(192, 171, 178)  
}
```

If you want to add a text shadow in that color use the text-shadow property, you can generate a text shadow directly with our [CSS Text Shadow Generator](#).

Here you see how black text with a 4 pixel rgb(192, 171, 178) colored shadow looks like.

```
.shadow{ text-shadow: 4px 4px 2px rgb(192, 171, 178) }
```

Border

The CSS property to change the border of an element to CIELCh 72, 8.828, 354.674 is called "border". The border property can be set on classes, ids or directly on the HTML element.

This example shows the color as border, it can be applied via the CSS property "border" or "border-color".

```
.border, #border, table{ border:4px solid rgb(192, 171, 178) }
```

If only the border color should be changed use the property `border-color`.

```
.border{ border-color:rgb(192, 171, 178) }
```

If you want to add a box shadow in that color use:

Here you see how a box with a 4 pixel `rgb(192, 171, 178)` colored shadow looks like.

```
.boxshadow{ -moz-box-shadow:4px 4px 4px  
4px rgb(192, 171, 178); -webkit-box-  
shadow:4px 4px 4px 4px rgb(192, 171, 178);  
box-shadow:4px 4px 4px 4px rgb(192, 171,  
178) }
```

Background

The CSS property to change the background color of an element to CIELCh 72, 8.828, 354.674 is called "background". The background property can be set on classes, ids or directly on the HTML element.

```
.background, #background, body{  
background: rgb(192, 171, 178) }
```

If only the background color should be changed can be used:

```
.background{ background-color: rgb(192,  
171, 178) }
```

This example shows the color as background, it is applied via the CSS property "background".

To optimize and compress your CSS code, you can use our [online CSS compressor and optimizer](#) based on csstidy. If you want to create a linear or radial gradient as background or border, check our [CSS Gradient Generator](#).

Hey! You found this booklet interesting? Support Converting Colors with the new Membership Option!

The pro membership hides all ads, plus gives you double the colors in the color bucket, and more awesome pro features!

[Learn more, Memberships starting at \\$2.50/m!](#)

**Follow me
on Twitter!**

@ConvertingColor