

Converting Colors

CIELCh(72, 9.545, 3.742)

Have a look what the booklet for
CIELCh(72, 9.545, 3.742) contains.

CIELCh(72, 9.545, 3.742)	3
<i>Conversions</i>	4
<i>Details</i>	6
<i>Harmonies</i>	11
<i>Previews</i>	20
<i>Color Blindness Simulation</i>	23
<i>CSS Examples</i>	26

Color

CIELCh(72, 9.545, 3.742)

Conversions

Conversions Part 1

Format	Color
Hex	C3ABB0
RGB	195, 171, 176
RGB Percent	76%, 67%, 69%
CMY	0.2368, 0.3308, 0.3112
CMYK	0.00, 0.12, 0.10, 0.24
HSL	348°, 17%, 72%
HSV	348°, 12%, 76%
XYZ	44.7017, 43.6590, 46.9541
YIQ	178.7460, 12.6990, 6.6430

Conversions

Conversions Part 2

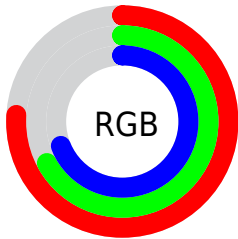
Format	Color
R _Y B	195, 171, 176
Decimal	12823472
CIE Lab	72.00, 9.52, 0.62
CIE LCh	72, 9.545, 3.742
Yxy	43.6590, 0.3304, 0.3226
Android (android.graphics.Color)	4291013552 (0xFFC3ABB0)
YUV	178.7460, -1.3538, 14.2548
Hunter-Lab	66.0750, 5.1295, 4.1199

Details

The CIELCh color $72, 9.545, 3.742$ is a light color, and the websafe version is hex `CC9999`. A complement of this color would be $77, 9.102, 181.574$, and the grayscale version is $73, 0.009, 296.813$.

A 20% lighter version of the original color is $92, 9.891, 1.870$, and $52, 9.418, 2.651$ is the 20% darker color. If you saturate the color by 10%, you get $67, 17.713, 4.916$, and if you desaturate by 10%, it is $77, 1.756, 2.549$.

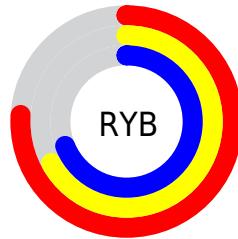
Distribution



Red (76%)

Green (67%)

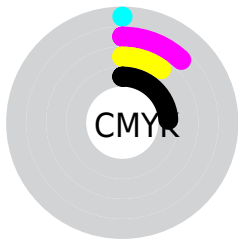
Blue (69%)



Red (76%)

Yellow (67%)

Blue (69%)

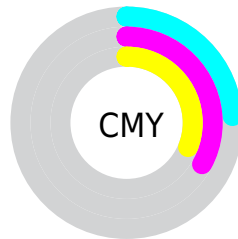


Cyan (0%)

Magenta (12%)

Yellow (10%)

Black (24%)



Cyan (24%)

Magenta (33%)

Yellow (31%)

Brightness & Saturation Gradients

These gradients show how the CIELCh color 72, 9.545, 3.742 changes by changing the brightness by 10 percent. The first figure shows a shift by +10% for each color and the second figure -10%.

Similar to the brightness gradients but the following saturation gradients show a change of the CIELCh color 72, 9.545, 3.742 by changing the saturation by 10% instead.

 72, 9.545, 3.742

 72, 9.545, 3.742

 100, 9.545, 3.742

 62, 9.545, 3.742

 92, 9.545, 3.742

 52, 9.545, 3.742

 42, 9.545, 3.742

 32, 9.545, 3.742

 22, 9.545, 3.742

 12, 9.545, 3.742

 2, 9.545, 3.742

 0, 9.545, 3.742

 72, 9.545, 3.742

 72, 9.545, 3.742

67, 17.713, 4.916

77, 1.756, 2.549

62, 26.198, 6.293

83, 5.627, 182.082

57, 34.864, 7.967

88, 12.611,
181.300

52, 43.491, 10.046

94, 19.220,
180.636

49, 51.775, 12.665

45, 59.377, 15.978

96, 19.884,
194.735

43, 66.025, 20.111

96, 19.727,
198.205

41, 71.652, 25.056

41, 75.567, 29.044

Harmonies

Complementary

The Complementary color scheme is a pair of colors which are on the opposite of each other on the color wheel.



72, 9.545, 3.742



77, 9.102, 181.574

Rectangle

The Rectangle color scheme consists of four colors that form a rectangle on the color wheel.



72, 9.545, 3.742



72, 9.545, 53.742



72, 9.545, 183.742



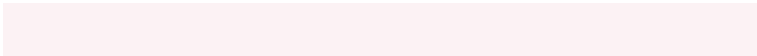
72, 9.545, 233.742

Sweetspot

The Sweet Spot groups the original color and five complimentary colors.



72, 9.543, 3.750



96, 3.747, 2.829



72, 14.821, 318.832



51, 2.689, 2.926



0, 0.000, 0.000



53, 0.007, 296.813

Same Dimension

The Same Dimension uses a secret algorithm to generate beautiful new colors.



72, 9.543, 3.750



89, 14.452, 4.073



74, 7.571, 48.734



38, 4.342, 3.430



33, 65.084, 28.184



3, 14.310, 8.188

Inverse Universe

The Inverse Universe completely reimagines the original color for something new.



72, 9.543, 3.750



89, 14.452, 4.073



75, 7.063, 230.429



38, 4.342, 3.430



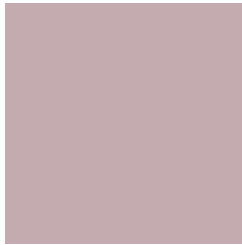
33, 65.084, 28.184



3, 14.310, 8.188

Previews

White Background



This preview shows how the CIELCh color 72, 9.545, 3.742 looks on a white background.

Color Contrast Check

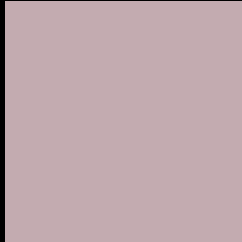
Large Text (above 18pt) WCAG AA × Fail

Any Text WCAG AA × Fail

Large Text (above 18pt) WCAG AAA × Fail

Any Text WCAG AAA × Fail

Black Background



This preview shows how the CIELCh color 72, 9.545, 3.742 looks on a black background.

Color Contrast Check

Large Text (above 18pt) WCAG AA ✓ Pass

Any Text WCAG AA ✓ Pass

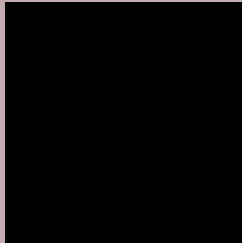
Large Text (above 18pt) WCAG AAA ✓ Pass

Any Text WCAG AAA ✓ Pass

If you want to check with other color combinations, try the [Color Contrast Checker](#).

CIELCh 72, 9.545, 3.742

Background



This preview shows how black text looks on a background with the CIELCh color 72, 9.545, 3.742.



This preview shows how white text looks on a background with the CIELCh color 72, 9.545, 3.742.

Color Blindness Simulation

Color vision deficiency is a very complex topic, and I could not describe the different causes any better than Wikipedia does, so if you want to learn more, you should check out their [article about color blindness](#).

Dichromacy



Original Color

72, 9.545, 3.742

Protanopia

72, 1.997, 324.414

Deuteranopia

72, 9.175, 3.014



Tritanopia
72, 12.078, 344.741

Trichromacy



Original Color

72, 9.545, 3.742

Protanomaly

72, 4.694, 352.149

Deuteranomaly

72, 9.175, 3.014

Tritanomaly

72, 10.913, 350.556

Monochromacy



Original Color

72, 9.545, 3.742

Achromatopsia

73, 0.009, 296.813

Achromatomaly

72, 3.571, 1.883

CSS Examples

Text

The CSS property to change the color of the text to CIELCh 72, 9.545, 3.742 is called "color". The color property can be set on classes, ids or directly on the HTML element.

This example shows how text in the color `rgb(195, 171, 176)` looks like.

```
.text, #text, p{  
    color:rgb(195, 171, 176)  
}
```

If you want to add a text shadow in that color use the text-shadow property, you can generate a text shadow directly with our [CSS Text Shadow Generator](#).

Here you see how black text with a 4 pixel rgb(195, 171, 176) colored shadow looks like.

```
.shadow{ text-shadow: 4px 4px 2px rgb(195, 171, 176) }
```

Border

The CSS property to change the border of an element to CIELCh 72, 9.545, 3.742 is called "border". The border property can be set on classes, ids or directly on the HTML element.

This example shows the color as border, it can be applied via the CSS property "border" or "border-color".

```
.border, #border, table{ border:4px solid rgb(195, 171, 176) }
```

If only the border color should be changed use the property `border-color`.

```
.border{ border-color:rgb(195, 171, 176) }
```

If you want to add a box shadow in that color use:

Here you see how a box with a 4 pixel `rgb(195, 171, 176)` colored shadow looks like.

```
.boxshadow{ -moz-box-shadow:4px 4px 4px  
4px rgb(195, 171, 176); -webkit-box-  
shadow:4px 4px 4px 4px rgb(195, 171, 176);  
box-shadow:4px 4px 4px 4px rgb(195, 171,  
176) }
```

Background

The CSS property to change the background color of an element to CIELCh 72, 9.545, 3.742 is called "background". The background property can be set on classes, ids or directly on the HTML element.

```
.background, #background, body{  
background: rgb(195, 171, 176) }
```

If only the background color should be changed can be used:

```
.background{ background-color: rgb(195,  
171, 176) }
```

This example shows the color as background, it is applied via the CSS property "background".

To optimize and compress your CSS code, you can use our [online CSS compressor and optimizer](#) based on csstidy. If you want to create a linear or radial gradient as background or border, check our [CSS Gradient Generator](#).

Hey! You found this booklet interesting? Support Converting Colors with the new Membership Option!

The pro membership hides all ads, plus gives you double the colors in the color bucket, and more awesome pro features!

[Learn more, Memberships starting at \\$2.50/m!](#)

**Follow me
on Twitter!**

@ConvertingColor