

Converting Colors

CIELCh(72, 9.578, 347.911)

Have a look what the booklet for
CIELCh(72, 9.578, 347.911) contains.

CIELCh(72, 9.328, 348.618)	3
<i>Conversions</i>	4
<i>Details</i>	6
<i>Harmonies</i>	11
<i>Previews</i>	20
<i>Color Blindness Simulation</i>	23
<i>CSS Examples</i>	26

Color

CIELCh(72, 9.328, 348.618)

Conversions

Conversions Part 1

Format	Color
Hex	C0ABB4
RGB	192, 171, 180
RGB Percent	75%, 67%, 71%
CMY	0.2468, 0.3292, 0.2939
CMYK	0.00, 0.11, 0.06, 0.25
HSL	334°, 14%, 71%
HSV	334°, 11%, 75%
XYZ	44.5708, 43.6590, 49.2887
YIQ	178.3050, 9.6270, 7.2510

Conversions

Conversions Part 2

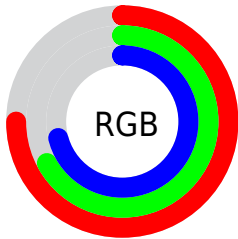
Format	Color
R_{YB}	192, 171, 180
Decimal	12626868
CIE Lab	72.00, 9.14, -1.84
CIE LCh	72, 9.328, 348.618
Yxy	43.6590, 0.3241, 0.3175
Android (android.graphics.Color)	4290816948 (0xFFC0ABB4)
YUV	178.3050, 0.8356, 12.0105
Hunter-Lab	66.0750, 4.7757, 2.0251

Details

The CIELCh color $72, 9.328, 348.618$ is a light color, and the websafe version is hex 999999 . A complement of this color would be $76, 9.148, 166.779$, and the grayscale version is $73, 0.009, 296.813$.

A 20% lighter version of the original color is $92, 9.442, 346.900$, and $52, 8.958, 349.319$ is the 20% darker color. If you saturate the color by 10%, you get $67, 18.085, 349.649$, and if you desaturate by 10%, it is $77, 0.789, 347.244$.

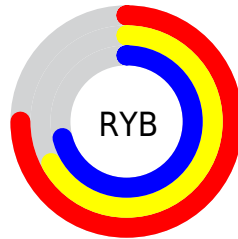
Distribution



Red (75%)

Green (67%)

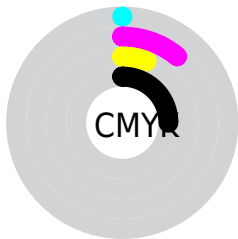
Blue (71%)



Red (75%)

Yellow (67%)

Blue (71%)

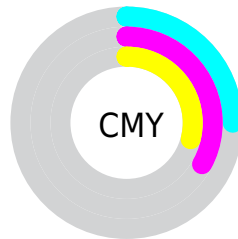


Cyan (0%)

Magenta (11%)

Yellow (6%)

Black (25%)



Cyan (25%)

Magenta (33%)

Yellow (29%)

Brightness & Saturation Gradients

These gradients show how the CIELCh color 72, 9.328, 348.618 changes by changing the brightness by 10 percent. The first figure shows a shift by +10% for each color and the second figure -10%.

Similar to the brightness gradients but the following saturation gradients show a change of the CIELCh color 72, 9.328, 348.618 by changing the saturation by 10% instead.

■ 72, 9.328, 348.618

■ 72, 9.328, 348.618

■ 100, 9.328,
348.618

■ 62, 9.328, 348.618

■ 92, 9.328, 348.618

■ 52, 9.328, 348.618

■ 42, 9.328, 348.618

■ 32, 9.328, 348.618

■ 22, 9.328, 348.618

■ 12, 9.328, 348.618

■ 2, 9.328, 348.618

■ 0, 9.328, 348.618

■ 72, 9.328, 348.618

■ 72, 9.328, 348.618

67, 18.085,
349.649

77, 0.789, 347.244

62, 26.953,
350.803

83, 7.467, 167.027

57, 35.742,
352.139

88, 15.416,
166.268

53, 44.169,
353.724

93, 23.057,
165.592

49, 51.857,
355.653

95, 23.831,
172.272

46, 58.366,
358.054

96, 21.482,
185.485

44, 63.301, 1.089

96, 20.491,
198.156

42, 66.482, 4.930

41, 68.284, 9.050

Harmonies

Complementary

The Complementary color scheme is a pair of colors which are on the opposite of each other on the color wheel.



72, 9.328, 348.618



76, 9.148, 166.779

Rectangle

The Rectangle color scheme consists of four colors that form a rectangle on the color wheel.



72, 9.328, 348.618



72, 9.328, 38.618



72, 9.328, 168.618



72, 9.328, 218.618

Sweetspot

The Sweet Spot groups the original color and five complimentary colors.



72, 9.326, 348.623



96, 3.135, 347.793



72, 12.309, 311.816



51, 2.378, 347.898



99, 0.012, 296.813



52, 0.007, 296.813

Same Dimension

The Same Dimension uses a secret algorithm to generate beautiful new colors.



72, 9.326, 348.623



90, 13.775, 348.849



72, 7.566, 25.718



38, 4.860, 348.470



34, 59.791, 8.318



3, 15.280, 356.542

Inverse Universe

The Inverse Universe completely reimagines the original color for something new.



72, 9.326, 348.623



90, 13.775, 348.849



76, 7.051, 205.092



38, 4.860, 348.470



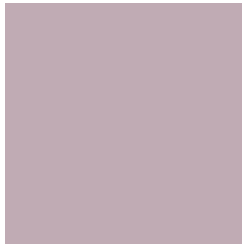
34, 59.791, 8.318



3, 15.280, 356.542

Previews

White Background



This preview shows how the CIELCh color 72, 9.328, 348.618 looks on a white background.

Color Contrast Check

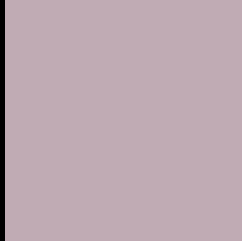
Large Text (above 18pt) WCAG AA × Fail

Any Text WCAG AA × Fail

Large Text (above 18pt) WCAG AAA × Fail

Any Text WCAG AAA × Fail

Black Background



This preview shows how the CIE LCh color 72, 9.328, 348.618 looks on a black background.

Color Contrast Check

Large Text (above 18pt) WCAG AA ✓ Pass

Any Text WCAG AA ✓ Pass

Large Text (above 18pt) WCAG AAA ✓ Pass

Any Text WCAG AAA ✓ Pass

If you want to check with other color combinations, try the [Color Contrast Checker](#).

CIELCh 72, 9.328, 348.618

Background



This preview shows how black text looks on a background with the CIELCh color 72, 9.328, 348.618.



This preview shows how white text looks on a background with the CIELCh color 72, 9.328, 348.618.

Color Blindness Simulation

Color vision deficiency is a very complex topic, and I could not describe the different causes any better than Wikipedia does, so if you want to learn more, you should check out their [article about color blindness](#).

Dichromacy



Original Color

72, 9.328, 348.618

Protanopia

72, 3.897, 301.475

Deuteranopia

72, 9.328, 348.618



Tritanopia
72, 11.523, 339.093

Trichromacy



Original Color
72, 9.328, 348.618

Protanomaly
72, 5.528, 327.845

Deuteranomaly
72, 9.328, 348.618

Tritanomaly
72, 11.181, 341.201

Monochromacy



Original Color
72, 9.328, 348.618

Achromatopsia
73, 0.009, 296.813

Achromatomaly
72, 3.725, 343.903

CSS Examples

Text

The CSS property to change the color of the text to CIELCh 72, 9.328, 348.618 is called "color". The color property can be set on classes, ids or directly on the HTML element.

This example shows how text in the color `rgb(192, 171, 180)` looks like.

```
.text, #text, p{  
    color:rgb(192, 171, 180)  
}
```

If you want to add a text shadow in that color use the text-shadow property, you can generate a text shadow directly with our [CSS Text Shadow Generator](#).

Here you see how black text with a 4 pixel rgb(192, 171, 180) colored shadow looks like.

```
.shadow{ text-shadow: 4px 4px 2px rgb(192, 171, 180) }
```

Border

The CSS property to change the border of an element to CIELCh 72, 9.328, 348.618 is called "border". The border property can be set on classes, ids or directly on the HTML element.

This example shows the color as border, it can be applied via the CSS property "border" or "border-color".

```
.border, #border, table{ border:4px solid rgb(192, 171, 180) }
```

If only the border color should be changed use the property `border-color`.

```
.border{ border-color:rgb(192, 171, 180) }
```

If you want to add a box shadow in that color use:

Here you see how a box with a 4 pixel `rgb(192, 171, 180)` colored shadow looks like.

```
.boxshadow{ -moz-box-shadow:4px 4px 4px  
4px rgb(192, 171, 180); -webkit-box-  
shadow:4px 4px 4px 4px rgb(192, 171, 180);  
box-shadow:4px 4px 4px 4px rgb(192, 171,  
180) }
```

Background

The CSS property to change the background color of an element to CIELCh 72, 9.328, 348.618 is called "background". The background property can be set on classes, ids or directly on the HTML element.

```
.background, #background, body{  
background: rgb(192, 171, 180) }
```

If only the background color should be changed can be used:

```
.background{ background-color: rgb(192,  
171, 180) }
```

This example shows the color as background, it is applied via the CSS property "background".

To optimize and compress your CSS code, you can use our [online CSS compressor and optimizer](#) based on csstidy. If you want to create a linear or radial gradient as background or border, check our [CSS Gradient Generator](#).

Hey! You found this booklet interesting? Support Converting Colors with the new Membership Option!

The pro membership hides all ads, plus gives you double the colors in the color bucket, and more awesome pro features!

[Learn more, Memberships starting at \\$2.50/m!](#)

**Follow me
on Twitter!**

@ConvertingColor