

Converting Colors

CIELCh(72, 9.824, 29.658)

Have a look what the booklet for
CIELCh(72, 9.824, 29.658) contains.

CIELCh(72, 9.837, 29.649)	3
<i>Conversions</i>	4
<i>Details</i>	6
<i>Harmonies</i>	11
<i>Previews</i>	20
<i>Color Blindness Simulation</i>	23
<i>CSS Examples</i>	26

Color

CIELCh(72, 9.837, 29.649)

Conversions

Conversions Part 1

Format	Color
Hex	C4ABA8
RGB	196, 171, 168
RGB Percent	77%, 67%, 66%
CMY	0.2316, 0.3296, 0.3414
CMYK	0.00, 0.13, 0.14, 0.23
HSL	6°, 19%, 71%
HSV	6°, 14%, 77%
XYZ	44.3661, 43.6590, 43.1084
YIQ	178.1330, 15.8630, 4.3670

Conversions

Conversions Part 2

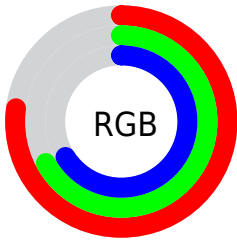
Format	Color
R _Y B	196, 171, 168
Decimal	12889000
CIE Lab	72.00, 8.55, 4.87
CIE LCh	72, 9.837, 29.649
Yxy	43.6590, 0.3383, 0.3329
Android (android.graphics.Color)	4291079080 (0xFFC4ABA8)
YUV	178.1330, -4.9956, 15.6694
Hunter-Lab	66.0750, 4.2228, 7.5707

Details

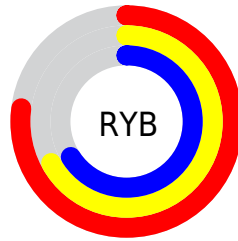
The CIELCh color $72, 9.837, 29.649$ is a light color, and the websafe version is hex `CC9999`. A complement of this color would be $76, 8.953, 209.232$, and the grayscale version is $73, 0.009, 296.813$.

A 20% lighter version of the original color is $92, 10.013, 28.875$, and $52, 9.772, 30.578$ is the 20% darker color. If you saturate the color by 10%, you get $67, 17.425, 30.126$, and if you desaturate by 10%, it is $77, 2.833, 29.238$.

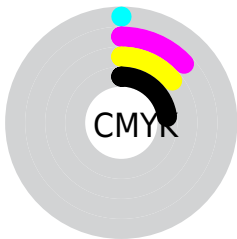
Distribution



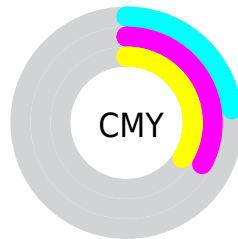
- Red (77%)
- Green (67%)
- Blue (66%)



- Red (77%)
- Yellow (67%)
- Blue (66%)



- Cyan (0%)
- Magenta (13%)
- Yellow (14%)
- Black (23%)



- Cyan (23%)
- Magenta (33%)
- Yellow (34%)

Brightness & Saturation Gradients

These gradients show how the CIELCh color 72, 9.837, 29.649 changes by changing the brightness by 10 percent. The first figure shows a shift by +10% for each color and the second figure -10%.

Similar to the brightness gradients but the following saturation gradients show a change of the CIELCh color 72, 9.837, 29.649 by changing the saturation by 10% instead.

 72, 9.837, 29.649

 72, 9.837, 29.649

 100, 9.837, 29.649

 62, 9.837, 29.649

 92, 9.837, 29.649

 52, 9.837, 29.649

 42, 9.837, 29.649

 32, 9.837, 29.649

 22, 9.837, 29.649

 12, 9.837, 29.649

 2, 9.837, 29.649

 0, 9.837, 29.649

 72, 9.837, 29.649

 72, 9.837, 29.649

67, 17.425, 30.126

77, 2.833, 29.238

62, 25.627, 30.778

82, 3.626, 209.413

58, 34.429, 31.687

87, 9.595, 209.238

54, 43.767, 32.917

92, 15.127,
209.201

50, 53.495, 34.518

96, 19.330,
198.230

47, 63.335, 36.480

44, 72.744, 38.616

42, 80.534, 40.334

42, 84.096, 41.239

Harmonies

Complementary

The Complementary color scheme is a pair of colors which are on the opposite of each other on the color wheel.



72, 9.837, 29.649



76, 8.953, 209.232

Rectangle

The Rectangle color scheme consists of four colors that form a rectangle on the color wheel.



72, 9.837, 29.649



72, 9.837, 79.649



72, 9.837, 209.649



72, 9.837, 259.649

Sweetspot

The Sweet Spot groups the original color and five complimentary colors.



72, 9.836, 29.661



98, 3.270, 29.222



72, 17.203, 328.079



52, 2.331, 29.272



0, 0.000, 0.000



53, 0.007, 296.813

Same Dimension

The Same Dimension uses a secret algorithm to generate beautiful new colors.



72, 9.836, 29.661



90, 14.673, 29.784



76, 10.003, 83.581



38, 3.790, 29.473



34, 72.165, 41.315



4, 13.073, 25.701

Inverse Universe

The Inverse Universe completely reimagines the original color for something new.



76, 8.953, 209.232



96, 13.075, 209.210



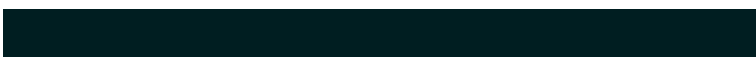
73, 9.861, 267.419



40, 3.569, 209.302



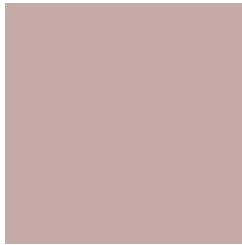
54, 31.454, 215.437



9, 11.080, 211.033

Previews

White Background



This preview shows how the CIELCh color 72, 9.837, 29.649 looks on a white background.

Color Contrast Check

Large Text (above 18pt) WCAG AA × Fail

Any Text WCAG AA × Fail

Large Text (above 18pt) WCAG AAA × Fail

Any Text WCAG AAA × Fail

Black Background



This preview shows how the CIE LCh color 72, 9.837, 29.649 looks on a black background.

Color Contrast Check

Large Text (above 18pt) WCAG AA ✓ Pass

Any Text WCAG AA ✓ Pass

Large Text (above 18pt) WCAG AAA ✓ Pass

Any Text WCAG AAA ✓ Pass

If you want to check with other color combinations, try the [Color Contrast Checker](#).

CIELCh 72, 9.837, 29.649

Background



This preview shows how black text looks on a background with the CIELCh color 72, 9.837, 29.649.



This preview shows how white text looks on a background with the CIELCh color 72, 9.837, 29.649.

Color Blindness Simulation

Color vision deficiency is a very complex topic, and I could not describe the different causes any better than Wikipedia does, so if you want to learn more, you should check out their [article about color blindness](#).

Dichromacy



Original Color


72, 9.837, 29.649

Protanopia

72, 3.295, 74.655

Deuteranopia

72, 10.229, 29.314



Tritanopia
72, 13.030, 347.816

Trichromacy



Original Color
72, 9.837, 29.649

Protanomaly
72, 5.071, 44.956

Deuteranomaly
72, 10.229, 29.314

Tritanomaly
72, 10.966, 0.143

Monochromacy



Original Color
72, 9.837, 29.649

Achromatopsia
73, 0.009, 296.813

Achromatomaly
72, 3.827, 27.727

CSS Examples

Text

The CSS property to change the color of the text to CIELCh 72, 9.837, 29.649 is called "color". The color property can be set on classes, ids or directly on the HTML element.

This example shows how text in the color `rgb(196, 171, 168)` looks like.

```
.text, #text, p{  
    color:rgb(196, 171, 168)  
}
```

If you want to add a text shadow in that color use the text-shadow property, you can generate a text shadow directly with our [CSS Text Shadow Generator](#).

Here you see how black text with a 4 pixel rgb(196, 171, 168) colored shadow looks like.

```
.shadow{ text-shadow: 4px 4px 2px rgb(196, 171, 168) }
```

Border

The CSS property to change the border of an element to CIELCh 72, 9.837, 29.649 is called "border". The border property can be set on classes, ids or directly on the HTML element.

This example shows the color as border, it can be applied via the CSS property "border" or "border-color".

```
.border, #border, table{ border:4px solid rgb(196, 171, 168) }
```

If only the border color should be changed use the property `border-color`.

```
.border{ border-color:rgb(196, 171, 168) }
```

If you want to add a box shadow in that color use:

Here you see how a box with a 4 pixel `rgb(196, 171, 168)` colored shadow looks like.

```
.boxshadow{ -moz-box-shadow:4px 4px 4px  
4px rgb(196, 171, 168); -webkit-box-  
shadow:4px 4px 4px 4px rgb(196, 171, 168);  
box-shadow:4px 4px 4px 4px rgb(196, 171,  
168) }
```

Background

The CSS property to change the background color of an element to CIELCh 72, 9.837, 29.649 is called "background". The background property can be set on classes, ids or directly on the HTML element.

```
.background, #background, body{  
background: rgb(196, 171, 168) }
```

If only the background color should be changed can be used:

```
.background{ background-color: rgb(196,  
171, 168) }
```

This example shows the color as background, it is applied via the CSS property "background".

To optimize and compress your CSS code, you can use our [online CSS compressor and optimizer](#) based on csstidy. If you want to create a linear or radial gradient as background or border, check our [CSS Gradient Generator](#).

Hey! You found this booklet interesting? Support Converting Colors with the new Membership Option!

The pro membership hides all ads, plus gives you double the colors in the color bucket, and more awesome pro features!

[Learn more, Memberships starting at \\$2.50/m!](#)

**Follow me
on Twitter!**

@ConvertingColor