

Converting Colors

CIELCh(73, 10.109, 26.321)

Have a look what the booklet for
CIELCh(73, 10.109, 26.321) contains.

CIELCh(73, 10.109, 26.321)	3
<i>Conversions</i>	4
<i>Details</i>	6
<i>Harmonies</i>	11
<i>Previews</i>	20
<i>Color Blindness Simulation</i>	23
<i>CSS Examples</i>	26

Color

CIELCh(73, 10.109, 26.321)

Conversions

Conversions Part 1

Format	Color
Hex	C7ADAB
RGB	199, 173, 171
RGB Percent	78%, 68%, 67%
CMY	0.2182, 0.3202, 0.3281
CMYK	0.00, 0.13, 0.14, 0.22
HSL	4°, 20%, 73%
HSV	4°, 14%, 78%
XYZ	46.0416, 45.1644, 44.9916
YIQ	180.5460, 16.1380, 4.8900

Conversions

Conversions Part 2

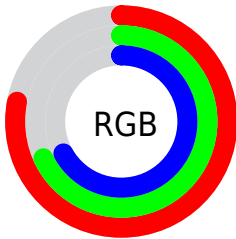
Format	Color
RYB	199, 173, 171
Decimal	13086123
CIELab	73.00, 9.06, 4.48
CIElCh	73, 10.109, 26.321
Yxy	45.1644, 0.3381, 0.3316
Android (android.graphics.Color)	4291276203 (0xFFC7ADAB)
YUV	180.5460, -4.7062, 16.1842
Hunter-Lab	67.2044, 4.6820, 7.3501

Details

The CIELCh color **73, 10.109, 26.321** is a light color, and the websafe version is hex **CC9999**. A complement of this color would be **78, 9.218, 205.491**, and the grayscale version is **74, 0.009, 296.813**.

A 20% lighter version of the original color is **93, 9.912, 25.961**, and **53, 10.043, 27.008** is the 20% darker color. If you saturate the color by 10%, you get **68, 18.021, 26.961**, and if you desaturate by 10%, it is **78, 2.798, 25.756**.

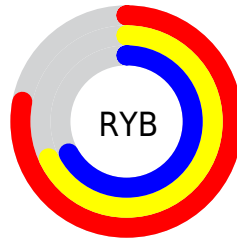
Distribution



Red (78%)

Green (68%)

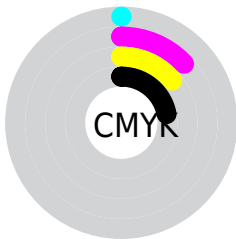
Blue (67%)



Red (78%)

Yellow (68%)

Blue (67%)

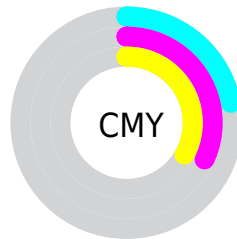


Cyan (0%)

Magenta (13%)

Yellow (14%)

Black (22%)



Cyan (22%)

Magenta (32%)

Yellow (33%)


Brightness & Saturation Gradients

These gradients show how the CIELCh color 73, 10.109, 26.321 changes by changing the brightness by 10 percent. The first figure shows a shift by +10% for each color and the second figure -10%.

Similar to the brightness gradients but the following saturation gradients show a change of the CIELCh color 73, 10.109, 26.321 by changing the saturation by 10% instead.

 73, 10.109, 26.321

 73, 10.109, 26.321

 100, 10.109,
26.321

 63, 10.109, 26.321

 93, 10.109, 26.321

 53, 10.109, 26.321

 43, 10.109, 26.321

 33, 10.109, 26.321

 23, 10.109, 26.321

 13, 10.109, 26.321

 3, 10.109, 26.321

 0, 10.109, 26.321

 73, 10.109, 26.321

 73, 10.109, 26.321

68, 18.021, 26.961

78, 2.798, 25.756

63, 26.555, 27.801

84, 3.948, 205.789

58, 35.682, 28.930

89, 10.181,
205.495

54, 45.310, 30.425

94, 15.958,
205.339

50, 55.263, 32.353

47, 65.236, 34.717

96, 18.297,
198.295

44, 74.674, 37.325

43, 82.377, 39.542

42, 85.891, 40.711

Harmonies

Complementary

The Complementary color scheme is a pair of colors which are on the opposite of each other on the color wheel.



73, 10.109, 26.321



78, 9.218, 205.491

Rectangle

The Rectangle color scheme consists of four colors that form a rectangle on the color wheel.



73, 10.109, 26.321



73, 10.109, 76.321



73, 10.109, 206.321



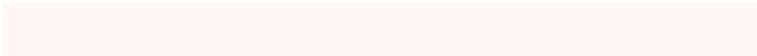
73, 10.109, 256.321

Sweetspot

The Sweet Spot groups the original color and five complimentary colors.



73, 10.108, 26.333



97, 3.374, 25.756



73, 17.554, 327.062



52, 2.405, 25.816



0, 0.000, 0.000



53, 0.007, 296.813

Same Dimension

The Same Dimension uses a secret algorithm to generate beautiful new colors.



73, 10.108, 26.333



89, 15.130, 26.516



77, 9.701, 80.467



39, 3.995, 26.083



34, 73.668, 40.732



4, 15.197, 23.291

Inverse Universe

The Inverse Universe completely reimagines the original color for something new.



78, 9.218, 205.491



96, 13.490, 205.413



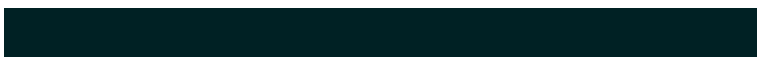
74, 9.503, 264.250



41, 3.761, 205.631



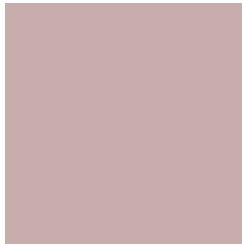
57, 32.809, 208.520



11, 12.073, 205.632

Previews

White Background



This preview shows how the CIELCh color 73, 10.109, 26.321 looks on a white background.

Color Contrast Check

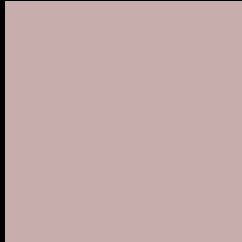
Large Text (above 18pt) WCAG AA × Fail

Any Text WCAG AA × Fail

Large Text (above 18pt) WCAG AAA × Fail

Any Text WCAG AAA × Fail

Black Background



This preview shows how the CIELCh color 73, 10.109, 26.321 looks on a black background.

Color Contrast Check

Large Text (above 18pt) WCAG AA ✓ Pass

Any Text WCAG AA ✓ Pass

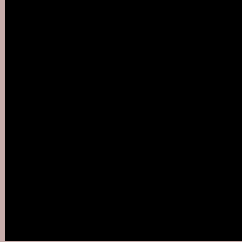
Large Text (above 18pt) WCAG AAA ✓ Pass

Any Text WCAG AAA ✓ Pass

If you want to check with other color combinations, try the [Color Contrast Checker](#).

CIELCh 73, 10.109, 26.321

Background



This preview shows how black text looks on a background with the CIELCh color 73, 10.109, 26.321.



This preview shows how white text looks on a background with the CIELCh color 73, 10.109, 26.321.

Color Blindness Simulation

Color vision deficiency is a very complex topic, and I could not describe the different causes any better than Wikipedia does, so if you want to learn more, you should check out their [article about color blindness](#).

Dichromacy



Original Color

73, 10.109, 26.321

Protanopia

73, 3.284, 74.664

Deuteranopia

73, 10.502, 26.125



Tritanopia
73, 13.602, 346.775

Trichromacy



Original Color
73, 10.109, 26.321

Protanomaly
73, 5.406, 43.233

Deuteranomaly
73, 10.502, 26.125

Tritanomaly
73, 11.479, 358.288

Monochromacy



Original Color
73, 10.109, 26.321

Achromatopsia
74, 0.009, 296.813

Achromatomaly
73, 3.814, 27.722

CSS Examples

Text

The CSS property to change the color of the text to CIELCh 73, 10.109, 26.321 is called "color". The color property can be set on classes, ids or directly on the HTML element.

This example shows how text in the color `rgb(199, 173, 171)` looks like.

```
.text, #text, p{  
    color:rgb(199, 173, 171)  
}
```

If you want to add a text shadow in that color use the text-shadow property, you can generate a text shadow directly with our [CSS Text Shadow Generator](#).

Here you see how black text with a 4 pixel rgb(199, 173, 171) colored shadow looks like.

```
.shadow{ text-shadow: 4px 4px 2px rgb(199, 173, 171) }
```

Border

The CSS property to change the border of an element to CIELCh 73, 10.109, 26.321 is called "border". The border property can be set on classes, ids or directly on the HTML element.

This example shows the color as border, it can be applied via the CSS property "border" or "border-color".

```
.border, #border, table{ border:4px solid rgb(199, 173, 171) }
```

If only the border color should be changed use the property `border-color`.

```
.border{ border-color:rgb(199, 173, 171) }
```

If you want to add a box shadow in that color use:

Here you see how a box with a 4 pixel `rgb(199, 173, 171)` colored shadow looks like.

```
.boxshadow{ -moz-box-shadow:4px 4px 4px  
4px rgb(199, 173, 171); -webkit-box-  
shadow:4px 4px 4px 4px rgb(199, 173, 171);  
box-shadow:4px 4px 4px 4px rgb(199, 173,  
171) }
```

Background

The CSS property to change the background color of an element to CIELCh 73, 10.109, 26.321 is called "background". The background property can be set on classes, ids or directly on the HTML element.

```
.background, #background, body{  
background: rgb(199, 173, 171) }
```

If only the background color should be changed can be used:

```
.background{ background-color: rgb(199,  
173, 171) }
```

This example shows the color as background, it is applied via the CSS property "background".

To optimize and compress your CSS code, you can use our [online CSS compressor and optimizer](#) based on csstidy. If you want to create a linear or radial gradient as background or border, check our [CSS Gradient Generator](#).

Hey! You found this booklet interesting? Support Converting Colors with the new Membership Option!

The pro membership hides all ads, plus gives you double the colors in the color bucket, and more awesome pro features!

[Learn more, Memberships starting at \\$2.50/m!](#)

**Follow me
on Twitter!**

@ConvertingColor