

Converting Colors

CIELCh(73, 10.857, 75.339)

Have a look what the booklet for
CIELCh(73, 10.857, 75.339) contains.

CIELCh(73, 10.927, 76.617)	3
<i>Conversions</i>	4
<i>Details</i>	6
<i>Harmonies</i>	11
<i>Previews</i>	20
<i>Color Blindness Simulation</i>	23
<i>CSS Examples</i>	26

Color

CIELCh(73, 10.927, 76.617)

Conversions

Conversions Part 1

Format	Color
Hex	C0B1A0
RGB	192, 177, 160
RGB Percent	75%, 69%, 63%
CMY	0.2472, 0.3060, 0.3727
CMYK	0.00, 0.08, 0.17, 0.25
HSL	32°, 20%, 69%
HSV	32°, 17%, 75%
XYZ	43.7820, 45.1644, 39.6478
YIQ	179.5470, 14.3970, -2.1070

Conversions

Conversions Part 2

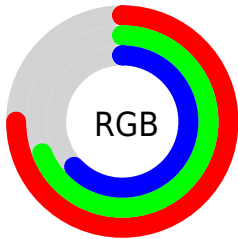
Format	Color
RYB	188, 192, 160
Decimal	12628384
CIELab	73.00, 2.53, 10.63
CIELCh	73, 10.927, 76.617
Yxy	45.1644, 0.3405, 0.3512
Android (android.graphics.Color)	4290818464 (0xFFC0B1A0)
YUV	179.5470, -9.6367, 10.9213
Hunter-Lab	67.2044, -1.3194, 12.0645

Details

The CIELCh color $73, 10.927, 76.617$ is a light color, and the websafe version is hex `CCCCCC`. A complement of this color would be $71, 10.560, 261.100$, and the grayscale version is $73, 0.009, 296.813$.

A 20% lighter version of the original color is $93, 10.977, 76.777$, and $53, 10.513, 74.700$ is the 20% darker color. If you saturate the color by 10%, you get $70, 17.852, 75.356$, and if you desaturate by 10%, it is $76, 4.281, 77.841$.

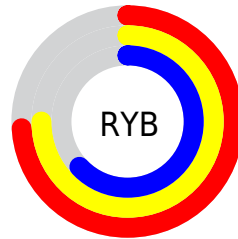
Distribution



Red (75%)

Green (69%)

Blue (63%)



Red (74%)

Yellow (75%)

Blue (63%)

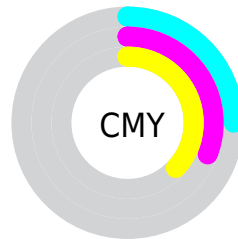


Cyan (0%)

Magenta (8%)

Yellow (17%)

Black (25%)



Cyan (25%)

Magenta (31%)

Yellow (37%)

Brightness & Saturation Gradients

These gradients show how the CIELCh color 73, 10.927, 76.617 changes by changing the brightness by 10 percent. The first figure shows a shift by +10% for each color and the second figure -10%.

Similar to the brightness gradients but the following saturation gradients show a change of the CIELCh color 73, 10.927, 76.617 by changing the saturation by 10% instead.

■ 73, 10.927, 76.617

■ 73, 10.927, 76.617

■ 100, 10.927,
76.617

■ 63, 10.927, 76.617

■ 93, 10.927, 76.617

■ 53, 10.927, 76.617

■ 43, 10.927, 76.617

■ 33, 10.927, 76.617

■ 23, 10.927, 76.617

■ 13, 10.927, 76.617

■ 3, 10.927, 76.617

■ 0, 10.927, 76.617

■ 73, 10.927, 76.617

■ 73, 10.927, 76.617

70, 17.852, 75.356

76, 4.281, 77.841

68, 25.060, 74.054

79, 2.107, 259.303

65, 32.534, 72.729

82, 8.259, 260.373

62, 40.209, 71.371

84, 14.199,
261.503

60, 47.923, 69.946

87, 19.535,
261.813

58, 55.343, 68.369

55, 61.850, 66.465

90, 17.477,
244.821

53, 66.611, 63.962

92, 17.188,
225.662

53, 68.068, 63.131

94, 18.695,
207.979

96, 20.522,
198.155

Harmonies

Complementary

The Complementary color scheme is a pair of colors which are on the opposite of each other on the color wheel.



73, 10.927, 76.617



71, 10.560, 261.100

Rectangle

The Rectangle color scheme consists of four colors that form a rectangle on the color wheel.



73, 10.927, 76.617



73, 10.927, 126.617



73, 10.927, 256.617



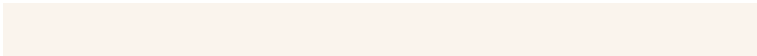
73, 10.927, 306.617

Sweetspot

The Sweet Spot groups the original color and five complimentary colors.



73, 10.928, 76.629



96, 3.961, 78.013



69, 14.817, 345.990



51, 2.706, 77.938



99, 0.012, 296.813



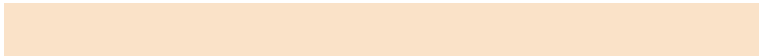
52, 0.007, 296.813

Same Dimension

The Same Dimension uses a secret algorithm to generate beautiful new colors.



73, 10.928, 76.629



91, 16.367, 76.168



77, 17.059, 109.279



39, 3.688, 77.526



44, 59.534, 63.663



7, 11.559, 61.872

Inverse Universe

The Inverse Universe completely reimagines the original color for something new.



71, 10.560, 261.100



88, 15.680, 261.696



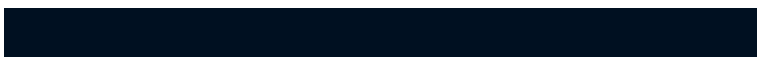
67, 17.718, 292.596



39, 3.626, 260.026



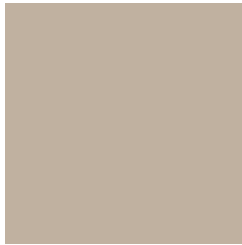
33, 53.807, 286.501



4, 13.255, 271.887

Previews

White Background



This preview shows how the CIELCh color 73, 10.927, 76.617 looks on a white background.

Color Contrast Check

Large Text (above 18pt) WCAG AA × Fail

Any Text WCAG AA × Fail

Large Text (above 18pt) WCAG AAA × Fail

Any Text WCAG AAA × Fail

Black Background



This preview shows how the CIELCh color 73, 10.927, 76.617 looks on a black background.

Color Contrast Check

Large Text (above 18pt) WCAG AA ✓ Pass

Any Text WCAG AA ✓ Pass

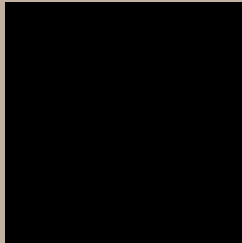
Large Text (above 18pt) WCAG AAA ✓ Pass

Any Text WCAG AAA ✓ Pass

If you want to check with other color combinations, try the [Color Contrast Checker](#).

CIELCh 73, 10.927, 76.617

Background



This preview shows how black text looks on a background with the CIELCh color 73, 10.927, 76.617.



This preview shows how white text looks on a background with the CIELCh color 73, 10.927, 76.617.

Color Blindness Simulation

Color vision deficiency is a very complex topic, and I could not describe the different causes any better than Wikipedia does, so if you want to learn more, you should check out their [article about color blindness](#).

Dichromacy



Original Color

73, 10.927, 76.617

Protanopia

73, 10.205, 91.401

Deuteranopia

73, 13.580, 48.612



Tritanopia
73, 11.211, 337.769

Trichromacy



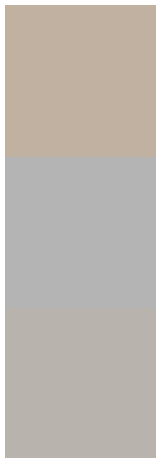
Original Color
73, 10.927, 76.617

Protanomaly
73, 10.142, 84.168

Deuteranomaly
73, 12.151, 55.219

Tritanomaly
73, 7.780, 7.999

Monochromacy



Original Color
73, 10.927, 76.617

Achromatopsia
73, 0.009, 296.813

Achromatomaly
73, 3.742, 79.355

CSS Examples

Text

The CSS property to change the color of the text to CIELCh 73, 10.927, 76.617 is called "color". The color property can be set on classes, ids or directly on the HTML element.

This example shows how text in the color `rgb(192, 177, 160)` looks like.

```
.text, #text, p{  
    color:rgb(192, 177, 160)  
}
```

If you want to add a text shadow in that color use the text-shadow property, you can generate a text shadow directly with our [CSS Text Shadow Generator](#).

Here you see how black text with a 4 pixel rgb(192, 177, 160) colored shadow looks like.

```
.shadow{ text-shadow: 4px 4px 2px rgb(192, 177, 160) }
```

Border

The CSS property to change the border of an element to CIELCh 73, 10.927, 76.617 is called "border". The border property can be set on classes, ids or directly on the HTML element.

This example shows the color as border, it can be applied via the CSS property "border" or "border-color".

```
.border, #border, table{ border:4px solid rgb(192, 177, 160) }
```

If only the border color should be changed use the property `border-color`.

```
.border{ border-color:rgb(192, 177, 160) }
```

If you want to add a box shadow in that color use:

Here you see how a box with a 4 pixel `rgb(192, 177, 160)` colored shadow looks like.

```
.boxshadow{ -moz-box-shadow:4px 4px 4px  
4px rgb(192, 177, 160); -webkit-box-  
shadow:4px 4px 4px 4px rgb(192, 177, 160);  
box-shadow:4px 4px 4px 4px rgb(192, 177,  
160) }
```

Background

The CSS property to change the background color of an element to CIELCh 73, 10.927, 76.617 is called "background". The background property can be set on classes, ids or directly on the HTML element.

```
.background, #background, body{  
background: rgb(192, 177, 160) }
```

If only the background color should be changed can be used:

```
.background{ background-color: rgb(192,  
177, 160) }
```

This example shows the color as background, it is applied via the CSS property "background".

To optimize and compress your CSS code, you can use our [online CSS compressor and optimizer](#) based on csstidy. If you want to create a linear or radial gradient as background or border, check our [CSS Gradient Generator](#).

Hey! You found this booklet interesting? Support Converting Colors with the new Membership Option!

The pro membership hides all ads, plus gives you double the colors in the color bucket, and more awesome pro features!

[Learn more, Memberships starting at \\$2.50/m!](#)

**Follow me
on Twitter!**

@ConvertingColor