

Converting Colors

CIELCh(73, 11.150, 68.064)

Have a look what the booklet for
CIELCh(73, 11.150, 68.064) contains.

CIELCh(73, 11.046, 66.812)	3
<i>Conversions</i>	4
<i>Details</i>	6
<i>Harmonies</i>	11
<i>Previews</i>	20
<i>Color Blindness Simulation</i>	23
<i>CSS Examples</i>	26

Color

CIELCh(73, 11.046, 66.812)

Conversions

Conversions Part 1

Format	Color
Hex	C3B0A1
RGB	195, 176, 161
RGB Percent	76%, 69%, 63%
CMY	0.2357, 0.3102, 0.3690
CMYK	0.00, 0.10, 0.17, 0.24
HSL	26°, 22%, 70%
HSV	26°, 17%, 76%
XYZ	44.4041, 45.1644, 40.0460
YIQ	179.9710, 16.1390, -0.6370

Conversions

Conversions Part 2

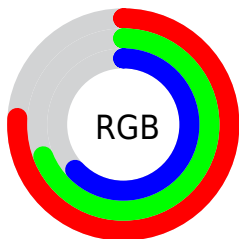
Format	Color
RYB	195, 188, 161
Decimal	12824737
CIELab	73.00, 4.35, 10.15
CIElCh	73, 11.046, 66.812
Yxy	45.1644, 0.3426, 0.3485
Android (android.graphics.Color)	4291014817 (0xFFC3B0A1)
YUV	179.9710, -9.3527, 13.1804
Hunter-Lab	67.2044, 0.3328, 11.7132

Details

The CIELCh color **73, 11.046, 66.812** is a light color, and the websafe version is hex **CCCCCC**. A complement of this color would be **72, 10.384, 251.107**, and the grayscale version is **73, 0.009, 296.813**.

A 20% lighter version of the original color is **93, 11.068, 67.502**, and **53, 11.308, 69.336** is the 20% darker color. If you saturate the color by 10%, you get **70, 17.884, 65.724**, and if you desaturate by 10%, it is **76, 4.582, 67.891**.

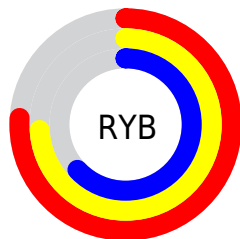
Distribution



Red (76%)

Green (69%)

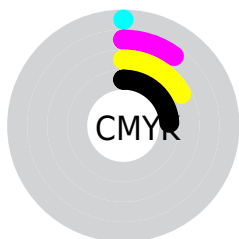
Blue (63%)



Red (76%)

Yellow (74%)

Blue (63%)

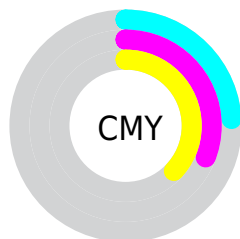


Cyan (0%)

Magenta (10%)

Yellow (17%)

Black (24%)



Cyan (24%)

Magenta (31%)

Yellow (37%)

Brightness & Saturation Gradients

These gradients show how the CIELCh color 73, 11.046, 66.812 changes by changing the brightness by 10 percent. The first figure shows a shift by +10% for each color and the second figure -10%.

Similar to the brightness gradients but the following saturation gradients show a change of the CIELCh color 73, 11.046, 66.812 by changing the saturation by 10% instead.

■ 73, 11.046, 66.812

■ 73, 11.046, 66.812

■ 100, 11.046,
66.812

■ 63, 11.046, 66.812

■ 93, 11.046, 66.812

■ 53, 11.046, 66.812

■ 43, 11.046, 66.812

■ 33, 11.046, 66.812

■ 23, 11.046, 66.812

■ 13, 11.046, 66.812

■ 3, 11.046, 66.812

■ 0, 11.046, 66.812

■ 73, 11.046, 66.812

■ 73, 11.046, 66.812

70, 17.884, 65.724

76, 4.582, 67.891

67, 25.117, 64.629

80, 1.542, 249.353

64, 32.748, 63.549

83, 7.360, 250.240

61, 40.734, 62.478

86, 12.908,
251.288

58, 48.942, 61.381

90, 16.963,
248.299

55, 57.057, 60.161

53, 64.443, 58.602

93, 16.498,
224.255

50, 70.196, 56.389

95, 18.713,
202.843

50, 71.615, 55.868

96, 19.648,
198.210

Harmonies

Complementary

The Complementary color scheme is a pair of colors which are on the opposite of each other on the color wheel.



73, 11.046, 66.812



72, 10.384, 251.107

Rectangle

The Rectangle color scheme consists of four colors that form a rectangle on the color wheel.



73, 11.046, 66.812



73, 11.046, 116.812



73, 11.046, 246.812



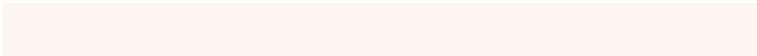
73, 11.046, 296.812

Sweetspot

The Sweet Spot groups the original color and five complimentary colors.



73, 11.046, 66.825



97, 3.771, 68.112



70, 16.591, 341.608



52, 2.600, 68.049



0, 0.000, 0.000



53, 0.007, 296.813

Same Dimension

The Same Dimension uses a secret algorithm to generate beautiful new colors.



73, 11.046, 66.825



91, 16.591, 66.398



77, 16.918, 105.591



39, 3.493, 67.695



41, 61.815, 56.450



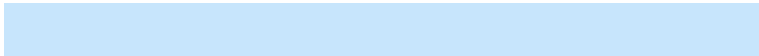
6, 11.474, 51.828

Inverse Universe

The Inverse Universe completely reimagines the original color for something new.



72, 10.384, 251.107



90, 15.356, 251.710



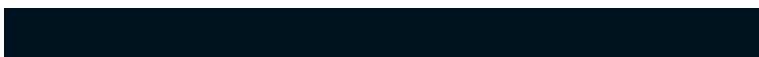
68, 17.505, 289.368



39, 3.388, 250.003



38, 44.943, 277.115



5, 12.034, 263.918

Previews

White Background



This preview shows how the CIELCh color 73, 11.046, 66.812 looks on a white background.

Color Contrast Check

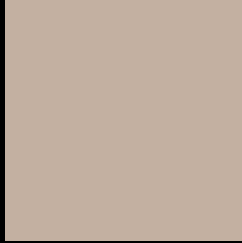
Large Text (above 18pt) WCAG AA × Fail

Any Text WCAG AA × Fail

Large Text (above 18pt) WCAG AAA × Fail

Any Text WCAG AAA × Fail

Black Background



This preview shows how the CIELCh color 73, 11.046, 66.812 looks on a black background.

Color Contrast Check

Large Text (above 18pt) WCAG AA ✓ Pass

Any Text WCAG AA ✓ Pass

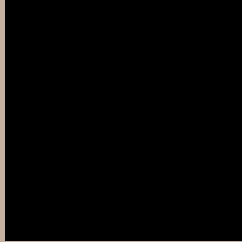
Large Text (above 18pt) WCAG AAA ✓ Pass

Any Text WCAG AAA ✓ Pass

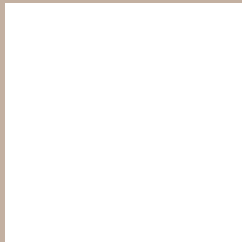
If you want to check with other color combinations, try the [Color Contrast Checker](#).

CIELCh 73, 11.046, 66.812

Background



This preview shows how black text looks on a background with the CIELCh color 73, 11.046, 66.812.



This preview shows how white text looks on a background with the CIELCh color 73, 11.046, 66.812.

Color Blindness Simulation

Color vision deficiency is a very complex topic, and I could not describe the different causes any better than Wikipedia does, so if you want to learn more, you should check out their [article about color blindness](#).

Dichromacy



Original Color

73, 11.046, 66.812

Protanopia

73, 9.572, 92.735

Deuteranopia

73, 13.580, 48.612



Tritanopia
73, 12.366, 342.674

Trichromacy



Original Color
73, 11.046, 66.812

Protanomaly
73, 9.651, 82.903

Deuteranomaly
73, 12.483, 54.168

Tritanomaly
73, 9.401, 6.905

Monochromacy



Original Color
73, 11.046, 66.812

Achromatopsia
73, 0.009, 296.813

Achromatomaly
73, 3.948, 74.554

CSS Examples

Text

The CSS property to change the color of the text to CIELCh 73, 11.046, 66.812 is called "color". The color property can be set on classes, ids or directly on the HTML element.

This example shows how text in the color `rgb(195, 176, 161)` looks like.

```
.text, #text, p{  
    color:rgb(195, 176, 161)  
}
```

If you want to add a text shadow in that color use the text-shadow property, you can generate a text shadow directly with our [CSS Text Shadow Generator](#).

Here you see how black text with a 4 pixel rgb(195, 176, 161) colored shadow looks like.

```
.shadow{ text-shadow: 4px 4px 2px rgb(195, 176, 161) }
```

Border

The CSS property to change the border of an element to CIELCh 73, 11.046, 66.812 is called "border". The border property can be set on classes, ids or directly on the HTML element.

This example shows the color as border, it can be applied via the CSS property "border" or "border-color".

```
.border, #border, table{ border:4px solid rgb(195, 176, 161) }
```

If only the border color should be changed use the property `border-color`.

```
.border{ border-color:rgb(195, 176, 161) }
```

If you want to add a box shadow in that color use:

Here you see how a box with a 4 pixel `rgb(195, 176, 161)` colored shadow looks like.

```
.boxshadow{ -moz-box-shadow:4px 4px 4px 4px rgb(195, 176, 161); -webkit-box-shadow:4px 4px 4px 4px rgb(195, 176, 161); box-shadow:4px 4px 4px 4px rgb(195, 176, 161) }
```

Background

The CSS property to change the background color of an element to CIELCh 73, 11.046, 66.812 is called "background". The background property can be set on classes, ids or directly on the HTML element.

```
.background, #background, body{  
background: rgb(195, 176, 161) }
```

If only the background color should be changed can be used:

```
.background{ background-color: rgb(195,  
176, 161) }
```

This example shows the color as background, it is applied via the CSS property "background".

To optimize and compress your CSS code, you can use our [online CSS compressor and optimizer](#) based on csstidy. If you want to create a linear or radial gradient as background or border, check our [CSS Gradient Generator](#).

Hey! You found this booklet interesting? Support Converting Colors with the new Membership Option!

The pro membership hides all ads, plus gives you double the colors in the color bucket, and more awesome pro features!

[Learn more, Memberships starting at \\$2.50/m!](#)

**Follow me
on Twitter!**

@ConvertingColor