

Converting Colors

CIELCh(73, 11.310, 65.348)

Have a look what the booklet for
CIELCh(73, 11.310, 65.348) contains.

CIELCh(73, 11.324, 65.339)	3
<i>Conversions</i>	4
<i>Details</i>	6
<i>Harmonies</i>	11
<i>Previews</i>	20
<i>Color Blindness Simulation</i>	23
<i>CSS Examples</i>	26

Color

CIELCh(73, 11.324, 65.339)

Conversions

Conversions Part 1

Format	Color
Hex	C4B0A1
RGB	196, 176, 161
RGB Percent	77%, 69%, 63%
CMY	0.2328, 0.3111, 0.3700
CMYK	0.00, 0.10, 0.18, 0.23
HSL	26°, 23%, 70%
HSV	26°, 18%, 77%
XYZ	44.5332, 45.1644, 39.9309
YIQ	180.2700, 16.7350, -0.4250

Conversions

Conversions Part 2

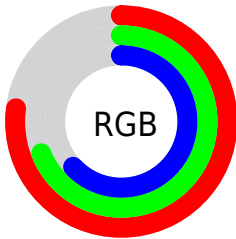
Format	Color
RYB	196, 187, 161
Decimal	12890273
CIELab	73.00, 4.72, 10.29
CIELCh	73, 11.324, 65.339
Yxy	45.1644, 0.3435, 0.3484
Android (android.graphics.Color)	4291080353 (0xFFC4B0A1)
YUV	180.2700, -9.5001, 13.7952
Hunter-Lab	67.2044, 0.6756, 11.8148

Details

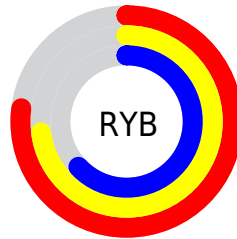
The CIELCh color **73, 11.324, 65.339** is a light color, and the websafe version is hex **CCCCCC**. A complement of this color would be **73, 10.587, 249.649**, and the grayscale version is **73, 0.009, 296.813**.

A 20% lighter version of the original color is **93, 11.325, 66.099**, and **53, 11.594, 67.717** is the 20% darker color. If you saturate the color by 10%, you get **70, 18.189, 64.288**, and if you desaturate by 10%, it is **76, 4.848, 66.389**.

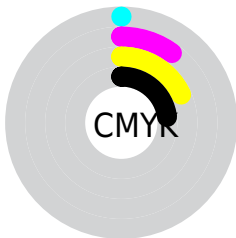
Distribution



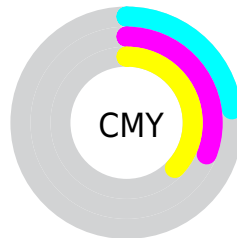
- Red (77%)
- Green (69%)
- Blue (63%)



- Red (77%)
- Yellow (73%)
- Blue (63%)



- Cyan (0%)
- Magenta (10%)
- Yellow (18%)
- Black (23%)



- Cyan (23%)
- Magenta (31%)
- Yellow (37%)


Brightness & Saturation Gradients

These gradients show how the CIELCh color 73, 11.324, 65.339 changes by changing the brightness by 10 percent. The first figure shows a shift by +10% for each color and the second figure -10%.

Similar to the brightness gradients but the following saturation gradients show a change of the CIELCh color 73, 11.324, 65.339 by changing the saturation by 10% instead.

 73, 11.324, 65.339

 73, 11.324, 65.339

 100, 11.324,
65.339

 63, 11.324, 65.339

 93, 11.324, 65.339

 53, 11.324, 65.339

 43, 11.324, 65.339

 33, 11.324, 65.339

 23, 11.324, 65.339

 13, 11.324, 65.339

 3, 11.324, 65.339

 0, 11.324, 65.339

 73, 11.324, 65.339

 73, 11.324, 65.339

70, 18.189, 64.288

76, 4.848, 66.389

66, 25.466, 63.237

80, 1.275, 247.885

63, 33.159, 62.207

83, 7.080, 248.690

60, 41.225, 61.194

87, 12.605,
249.716

57, 49.529, 60.161

90, 16.613,
246.332

55, 57.750, 59.008

52, 65.231, 57.507

93, 16.443,
221.328

50, 71.084, 55.356

96, 19.049,
199.959

50, 72.297, 54.949

96, 19.420,
198.224

Harmonies

Complementary

The Complementary color scheme is a pair of colors which are on the opposite of each other on the color wheel.



73, 11.324, 65.339



73, 10.587, 249.649

Rectangle

The Rectangle color scheme consists of four colors that form a rectangle on the color wheel.



73, 11.324, 65.339



73, 11.324, 115.339



73, 11.324, 245.339



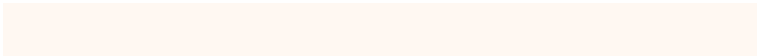
73, 11.324, 295.339

Sweetspot

The Sweet Spot groups the original color and five complimentary colors.



73, 11.324, 65.351



98, 3.781, 66.645



70, 17.263, 340.815



52, 2.585, 66.584



0, 0.000, 0.000



53, 0.007, 296.813

Same Dimension

The Same Dimension uses a secret algorithm to generate beautiful new colors.



73, 11.324, 65.351



91, 16.659, 64.985



77, 17.112, 104.752



39, 3.475, 66.242



41, 62.205, 55.538



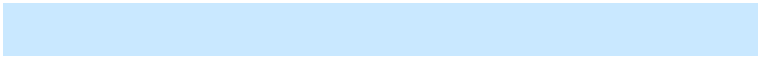
6, 11.489, 50.532

Inverse Universe

The Inverse Universe completely reimagines the original color for something new.



73, 10.587, 249.649



91, 15.348, 250.178



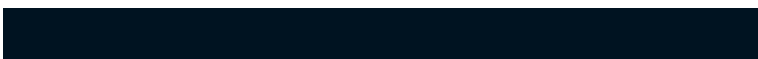
68, 17.693, 288.686



39, 3.364, 248.502



38, 43.812, 275.561



5, 11.872, 262.583

Previews

White Background



This preview shows how the CIELCh color 73, 11.324, 65.339 looks on a white background.

Color Contrast Check

Large Text (above 18pt) WCAG AA × Fail

Any Text WCAG AA × Fail

Large Text (above 18pt) WCAG AAA × Fail

Any Text WCAG AAA × Fail

Black Background



This preview shows how the CIELCh color 73, 11.324, 65.339 looks on a black background.

Color Contrast Check

Large Text (above 18pt) WCAG AA ✓ Pass

Any Text WCAG AA ✓ Pass

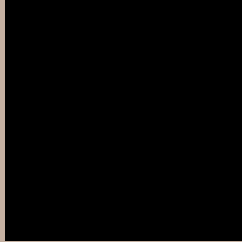
Large Text (above 18pt) WCAG AAA ✓ Pass

Any Text WCAG AAA ✓ Pass

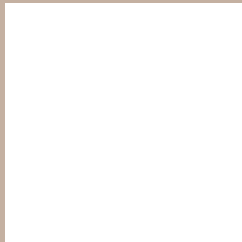
If you want to check with other color combinations, try the [Color Contrast Checker](#).

CIELCh 73, 11.324, 65.339

Background



This preview shows how black text looks on a background with the CIELCh color 73, 11.324, 65.339.



This preview shows how white text looks on a background with the CIELCh color 73, 11.324, 65.339.

Color Blindness Simulation

Color vision deficiency is a very complex topic, and I could not describe the different causes any better than Wikipedia does, so if you want to learn more, you should check out their [article about color blindness](#).

Dichromacy



Original Color

73, 11.324, 65.339

Protanopia

73, 9.572, 92.735

Deuteranopia

73, 13.580, 48.612



Tritanopia
73, 12.361, 345.800

Trichromacy



Original Color
73, 11.324, 65.339

Protanomaly
73, 9.833, 80.846

Deuteranomaly
73, 12.483, 54.168

Tritanomaly
73, 9.691, 10.595

Monochromacy



Original Color
73, 11.324, 65.339

Achromatopsia
73, 0.009, 296.813

Achromatomaly
73, 4.055, 61.249

CSS Examples

Text

The CSS property to change the color of the text to CIELCh 73, 11.324, 65.339 is called "color". The color property can be set on classes, ids or directly on the HTML element.

This example shows how text in the color `rgb(196, 176, 161)` looks like.

```
.text, #text, p{  
    color:rgb(196, 176, 161)  
}
```

If you want to add a text shadow in that color use the text-shadow property, you can generate a text shadow directly with our [CSS Text Shadow Generator](#).

Here you see how black text with a 4 pixel rgb(196, 176, 161) colored shadow looks like.

```
.shadow{ text-shadow: 4px 4px 2px rgb(196, 176, 161) }
```

Border

The CSS property to change the border of an element to CIELCh 73, 11.324, 65.339 is called "border". The border property can be set on classes, ids or directly on the HTML element.

This example shows the color as border, it can be applied via the CSS property "border" or "border-color".

```
.border, #border, table{ border:4px solid rgb(196, 176, 161) }
```

If only the border color should be changed use the property `border-color`.

```
.border{ border-color:rgb(196, 176, 161) }
```

If you want to add a box shadow in that color use:

Here you see how a box with a 4 pixel `rgb(196, 176, 161)` colored shadow looks like.

```
.boxshadow{ -moz-box-shadow:4px 4px 4px  
4px rgb(196, 176, 161); -webkit-box-  
shadow:4px 4px 4px 4px rgb(196, 176, 161);  
box-shadow:4px 4px 4px 4px rgb(196, 176,  
161) }
```

Background

The CSS property to change the background color of an element to CIELCh 73, 11.324, 65.339 is called "background". The background property can be set on classes, ids or directly on the HTML element.

```
.background, #background, body{  
background: rgb(196, 176, 161) }
```

If only the background color should be changed can be used:

```
.background{ background-color: rgb(196,  
176, 161) }
```

This example shows the color as background, it is applied via the CSS property "background".

To optimize and compress your CSS code, you can use our [online CSS compressor and optimizer](#) based on csstidy. If you want to create a linear or radial gradient as background or border, check our [CSS Gradient Generator](#).

Hey! You found this booklet interesting? Support Converting Colors with the new Membership Option!

The pro membership hides all ads, plus gives you double the colors in the color bucket, and more awesome pro features!

[Learn more, Memberships starting at \\$2.50/m!](#)

**Follow me
on Twitter!**

@ConvertingColor