

Converting Colors

CIELCh(73, 12.289, 20.322)

Have a look what the booklet for
CIELCh(73, 12.289, 20.322) contains.

CIELCh(73, 12.386, 20.438)	3
<i>Conversions</i>	4
<i>Details</i>	6
<i>Harmonies</i>	11
<i>Previews</i>	20
<i>Color Blindness Simulation</i>	23
<i>CSS Examples</i>	26

Color

CIELCh(73, 12.386, 20.438)

Conversions

Conversions Part 1

Format	Color
Hex	CCACAC
RGB	204, 172, 172
RGB Percent	80%, 67%, 67%
CMY	0.2011, 0.3266, 0.3266
CMYK	0.00, 0.16, 0.16, 0.20
HSL	0°, 24%, 74%
HSV	0°, 16%, 80%
XYZ	46.9427, 45.1644, 45.1342
YIQ	181.5680, 19.0720, 6.7840

Conversions

Conversions Part 2

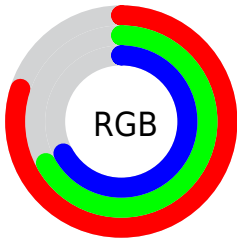
Format	Color
RYB	204, 172, 172
Decimal	13413548
CIELab	73.00, 11.61, 4.33
CIELCh	73, 12.386, 20.438
Yxy	45.1644, 0.3420, 0.3291
Android (android.graphics.Color)	4291603628 (0xFFCCACAC)
YUV	181.5680, -4.7170, 19.6729
Hunter-Lab	67.2044, 7.0755, 7.2243

Details

The CIELCh color **73, 12.386, 20.438** is a light color, and the websafe version is hex **CC9999**. A complement of this color would be **80, 11.194, 198.629**, and the grayscale version is **74, 0.009, 296.813**.

A 20% lighter version of the original color is **92, 10.207, 20.062**, and **53, 12.053, 20.734** is the 20% darker color. If you saturate the color by 10%, you get **67, 21.072, 21.412**, and if you desaturate by 10%, it is **79, 4.324, 19.632**.

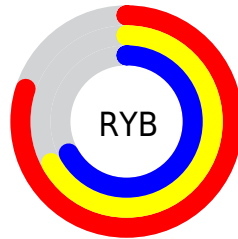
Distribution



Red (80%)

Green (67%)

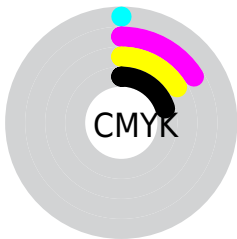
Blue (67%)



Red (80%)

Yellow (67%)

Blue (67%)

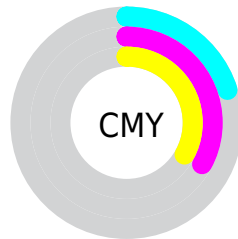


Cyan (0%)

Magenta (16%)

Yellow (16%)

Black (20%)



Cyan (20%)

Magenta (33%)

Yellow (33%)


Brightness & Saturation Gradients

These gradients show how the CIELCh color 73, 12.386, 20.438 changes by changing the brightness by 10 percent. The first figure shows a shift by +10% for each color and the second figure -10%.

Similar to the brightness gradients but the following saturation gradients show a change of the CIELCh color 73, 12.386, 20.438 by changing the saturation by 10% instead.

 73, 12.386, 20.438

 73, 12.386, 20.438

 100, 12.386,
20.438

 63, 12.386, 20.438

 93, 12.386, 20.438

 53, 12.386, 20.438

 43, 12.386, 20.438

 33, 12.386, 20.438

 23, 12.386, 20.438

 13, 12.386, 20.438

 3, 12.386, 20.438

 0, 12.386, 20.438

 73, 12.386, 20.438

 73, 12.386, 20.438

67, 21.072, 21.412

79, 4.324, 19.632

62, 30.365, 22.655

84, 3.131, 199.370

57, 40.176, 24.277

90, 10.027,
198.798

53, 50.324, 26.387

96, 16.420,
198.418

49, 60.529, 29.082

46, 70.404, 32.361

97, 16.961,
198.380

44, 79.323, 35.932

43, 85.943, 38.901

42, 88.295, 40.001

Harmonies

Complementary

The Complementary color scheme is a pair of colors which are on the opposite of each other on the color wheel.



73, 12.386, 20.438



80, 11.194, 198.629

Rectangle

The Rectangle color scheme consists of four colors that form a rectangle on the color wheel.



73, 12.386, 20.438



73, 12.386, 70.438



73, 12.386, 200.438



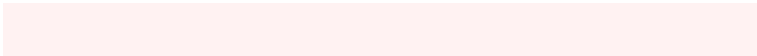
73, 12.386, 250.438

Sweetspot

The Sweet Spot groups the original color and five complimentary colors.



73, 12.384, 20.447



97, 4.538, 19.575



74, 20.904, 325.287



51, 3.105, 19.638



0, 0.000, 0.000



53, 0.007, 296.813

Same Dimension

The Same Dimension uses a secret algorithm to generate beautiful new colors.



73, 12.384, 20.447



87, 18.232, 20.764



77, 10.566, 73.469



40, 4.369, 19.933



34, 75.552, 39.824



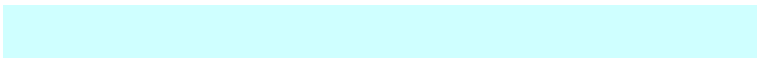
4, 17.909, 19.410

Inverse Universe

The Inverse Universe completely reimagines the original color for something new.



80, 11.194, 198.629



97, 16.079, 198.445



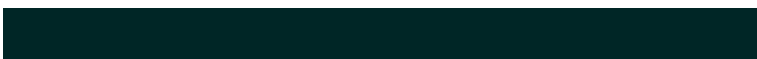
75, 10.152, 257.604



42, 4.119, 198.985



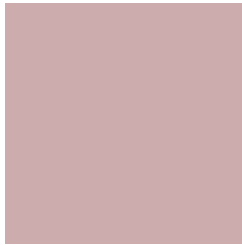
62, 36.296, 196.401



13, 13.512, 196.398

Previews

White Background



This preview shows how the CIELCh color 73, 12.386, 20.438 looks on a white background.

Color Contrast Check

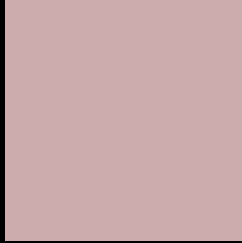
Large Text (above 18pt) WCAG AA × Fail

Any Text WCAG AA × Fail

Large Text (above 18pt) WCAG AAA × Fail

Any Text WCAG AAA × Fail

Black Background



This preview shows how the CIELCh color 73, 12.386, 20.438 looks on a black background.

Color Contrast Check

Large Text (above 18pt) WCAG AA ✓ Pass

Any Text WCAG AA ✓ Pass

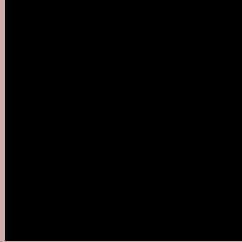
Large Text (above 18pt) WCAG AAA ✓ Pass

Any Text WCAG AAA ✓ Pass

If you want to check with other color combinations, try the [Color Contrast Checker](#).

CIELCh 73, 12.386, 20.438

Background



This preview shows how black text looks on a background with the CIELCh color 73, 12.386, 20.438.



This preview shows how white text looks on a background with the CIELCh color 73, 12.386, 20.438.

Color Blindness Simulation

Color vision deficiency is a very complex topic, and I could not describe the different causes any better than Wikipedia does, so if you want to learn more, you should check out their [article about color blindness](#).

Dichromacy



Original Color

73, 12.386, 20.438

Protanopia

73, 2.200, 66.721

Deuteranopia

73, 10.502, 26.125



Tritanopia
73, 14.990, 352.827

Trichromacy



Original Color
73, 12.386, 20.438

Protanomaly
73, 5.819, 30.481

Deuteranomaly
73, 10.896, 25.944

Tritanomaly
73, 13.668, 2.222

Monochromacy



Original Color
73, 12.386, 20.438

Achromatopsia
74, 0.009, 296.813

Achromatomaly
73, 4.154, 19.632

CSS Examples

Text

The CSS property to change the color of the text to CIELCh 73, 12.386, 20.438 is called "color". The color property can be set on classes, ids or directly on the HTML element.

This example shows how text in the color `rgb(204, 172, 172)` looks like.

```
.text, #text, p{  
    color:rgb(204, 172, 172)  
}
```

If you want to add a text shadow in that color use the text-shadow property, you can generate a text shadow directly with our [CSS Text Shadow Generator](#).

Here you see how black text with a 4 pixel rgb(204, 172, 172) colored shadow looks like.

```
.shadow{ text-shadow: 4px 4px 2px rgb(204, 172, 172) }
```

Border

The CSS property to change the border of an element to CIELCh 73, 12.386, 20.438 is called "border". The border property can be set on classes, ids or directly on the HTML element.

This example shows the color as border, it can be applied via the CSS property "border" or "border-color".

```
.border, #border, table{ border:4px solid rgb(204, 172, 172) }
```

If only the border color should be changed use the property `border-color`.

```
.border{ border-color:rgb(204, 172, 172) }
```

If you want to add a box shadow in that color use:

Here you see how a box with a 4 pixel `rgb(204, 172, 172)` colored shadow looks like.

```
.boxshadow{ -moz-box-shadow:4px 4px 4px  
4px rgb(204, 172, 172); -webkit-box-  
shadow:4px 4px 4px 4px rgb(204, 172, 172);  
box-shadow:4px 4px 4px 4px rgb(204, 172,  
172) }
```

Background

The CSS property to change the background color of an element to CIELCh 73, 12.386, 20.438 is called "background". The background property can be set on classes, ids or directly on the HTML element.

```
.background, #background, body{  
background: rgb(204, 172, 172) }
```

If only the background color should be changed can be used:

```
.background{ background-color: rgb(204,  
172, 172) }
```

This example shows the color as background, it is applied via the CSS property "background".

To optimize and compress your CSS code, you can use our [online CSS compressor and optimizer](#) based on csstidy. If you want to create a linear or radial gradient as background or border, check our [CSS Gradient Generator](#).

Hey! You found this booklet interesting? Support Converting Colors with the new Membership Option!

The pro membership hides all ads, plus gives you double the colors in the color bucket, and more awesome pro features!

[Learn more, Memberships starting at \\$2.50/m!](#)

**Follow me
on Twitter!**

@ConvertingColor