

Converting Colors

CIELCh(73, 12.503, 42.796)

Have a look what the booklet for
CIELCh(73, 12.503, 42.796) contains.

CIELCh(73, 12.426, 43.178)	3
<i>Conversions</i>	4
<i>Details</i>	6
<i>Harmonies</i>	11
<i>Previews</i>	20
<i>Color Blindness Simulation</i>	23
<i>CSS Examples</i>	26

Color

CIELCh(73, 12.426, 43.178)

Conversions

Conversions Part 1

Format	Color
Hex	CAADA4
RGB	202, 173, 164
RGB Percent	79%, 68%, 64%
CMY	0.2075, 0.3213, 0.3566
CMYK	0.00, 0.14, 0.19, 0.21
HSL	14°, 26%, 72%
HSV	14°, 19%, 79%
XYZ	46.0417, 45.1644, 41.4462
YIQ	180.6450, 20.1730, 3.3490

Conversions

Conversions Part 2

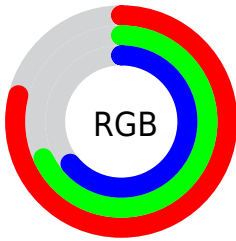
Format	Color
RYB	202, 176, 164
Decimal	13282724
CIELab	73.00, 9.06, 8.50
CIELCh	73, 12.426, 43.178
Yxy	45.1644, 0.3471, 0.3405
Android (android.graphics.Color)	4291472804 (0xFFCAADA4)
YUV	180.6450, -8.2060, 18.7283
Hunter-Lab	67.2044, 4.6825, 10.4779

Details

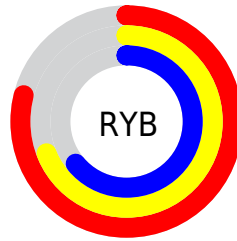
The CIELCh color **73, 12.426, 43.178** is a light color, and the websafe version is hex **CC9999**. A complement of this color would be **76, 11.037, 224.906**, and the grayscale version is **74, 0.009, 296.813**.

A 20% lighter version of the original color is **93, 11.003, 44.780**, and **53, 12.649, 44.513** is the 20% darker color. If you saturate the color by 10%, you get **69, 19.827, 43.021**, and if you desaturate by 10%, it is **77, 5.588, 43.427**.

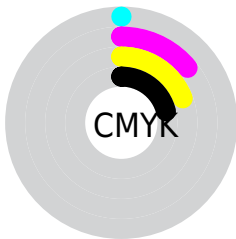
Distribution



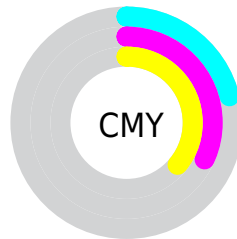
- Red (79%)
- Green (68%)
- Blue (64%)



- Red (79%)
- Yellow (69%)
- Blue (64%)



- Cyan (0%)
- Magenta (14%)
- Yellow (19%)
- Black (21%)



- Cyan (21%)
- Magenta (32%)
- Yellow (36%)

Brightness & Saturation Gradients

These gradients show how the CIELCh color 73, 12.426, 43.178 changes by changing the brightness by 10 percent. The first figure shows a shift by +10% for each color and the second figure -10%.

Similar to the brightness gradients but the following saturation gradients show a change of the CIELCh color 73, 12.426, 43.178 by changing the saturation by 10% instead.

■ 73, 12.426, 43.178

■ 73, 12.426, 43.178

■ 100, 12.426,
43.178

■ 63, 12.426, 43.178

■ 93, 12.426, 43.178

■ 53, 12.426, 43.178

■ 43, 12.426, 43.178

■ 33, 12.426, 43.178

■ 23, 12.426, 43.178

■ 13, 12.426, 43.178

■ 3, 12.426, 43.178

■ 0, 12.426, 43.178

■ 73, 12.426, 43.178

■ 73, 12.426, 43.178

69, 19.827, 43.021

77, 5.588, 43.427

65, 27.831, 42.980

82, 0.732, 224.625

61, 36.446, 43.102

86, 6.588, 224.401

57, 45.630, 43.409

91, 12.034,
224.830

53, 55.249, 43.892

95, 15.986,
207.430

50, 64.968, 44.457

48, 74.030, 44.809

97, 17.466,
198.348

45, 81.262, 44.554

45, 82.100, 44.583

Harmonies

Complementary

The Complementary color scheme is a pair of colors which are on the opposite of each other on the color wheel.



73, 12.426, 43.178



76, 11.037, 224.906

Rectangle

The Rectangle color scheme consists of four colors that form a rectangle on the color wheel.



73, 12.426, 43.178



73, 12.426, 93.178



73, 12.426, 223.178



73, 12.426, 273.178

Sweetspot

The Sweet Spot groups the original color and five complimentary colors.



73, 12.425, 43.189



97, 4.549, 43.476



72, 21.188, 332.930



51, 3.025, 43.467



0, 0.000, 0.000



53, 0.007, 296.813

Same Dimension

The Same Dimension uses a secret algorithm to generate beautiful new colors.



73, 12.425, 43.189



88, 18.694, 43.100



78, 15.371, 93.814



41, 3.636, 43.413



37, 70.501, 44.982



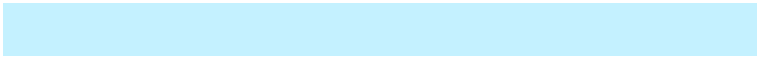
6, 15.722, 32.926

Inverse Universe

The Inverse Universe completely reimagines the original color for something new.



76, 11.037, 224.906



93, 16.087, 225.241



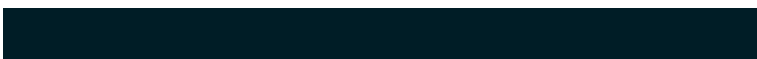
71, 15.519, 278.639



42, 3.438, 224.368



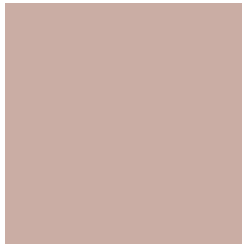
49, 32.636, 243.114



9, 11.764, 232.748

Previews

White Background



This preview shows how the CIELCh color 73, 12.426, 43.178 looks on a white background.

Color Contrast Check

Large Text (above 18pt) WCAG AA × Fail

Any Text WCAG AA × Fail

Large Text (above 18pt) WCAG AAA × Fail

Any Text WCAG AAA × Fail

Black Background



This preview shows how the CIELCh color 73, 12.426, 43.178 looks on a black background.

Color Contrast Check

Large Text (above 18pt) WCAG AA ✓ Pass

Any Text WCAG AA ✓ Pass

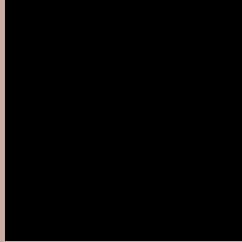
Large Text (above 18pt) WCAG AAA ✓ Pass

Any Text WCAG AAA ✓ Pass

If you want to check with other color combinations, try the [Color Contrast Checker](#).

CIELCh 73, 12.426, 43.178

Background



This preview shows how black text looks on a background with the CIELCh color 73, 12.426, 43.178.



This preview shows how white text looks on a background with the CIELCh color 73, 12.426, 43.178.

Color Blindness Simulation

Color vision deficiency is a very complex topic, and I could not describe the different causes any better than Wikipedia does, so if you want to learn more, you should check out their [article about color blindness](#).

Dichromacy



Original Color


73, 12.426, 43.178

Protanopia

73, 6.872, 89.897

Deuteranopia

73, 12.426, 43.178



Tritanopia
73, 14.653, 352.079

Trichromacy



Original Color
73, 12.426, 43.178

Protanomaly
73, 8.050, 67.153

Deuteranomaly
73, 12.426, 43.178

Tritanomaly
73, 12.559, 8.103

Monochromacy



Original Color
73, 12.426, 43.178

Achromatopsia
74, 0.009, 296.813

Achromatomaly
73, 4.473, 40.839

CSS Examples

Text

The CSS property to change the color of the text to CIELCh 73, 12.426, 43.178 is called "color". The color property can be set on classes, ids or directly on the HTML element.

This example shows how text in the color `rgb(202, 173, 164)` looks like.

```
.text, #text, p{  
    color:rgb(202, 173, 164)  
}
```

If you want to add a text shadow in that color use the text-shadow property, you can generate a text shadow directly with our [CSS Text Shadow Generator](#).

Here you see how black text with a 4 pixel rgb(202, 173, 164) colored shadow looks like.

```
.shadow{ text-shadow: 4px 4px 2px rgb(202, 173, 164) }
```

Border

The CSS property to change the border of an element to CIELCh 73, 12.426, 43.178 is called "border". The border property can be set on classes, ids or directly on the HTML element.

This example shows the color as border, it can be applied via the CSS property "border" or "border-color".

```
.border, #border, table{ border:4px solid rgb(202, 173, 164) }
```

If only the border color should be changed use the property `border-color`.

```
.border{ border-color:rgb(202, 173, 164) }
```

If you want to add a box shadow in that color use:

Here you see how a box with a 4 pixel `rgb(202, 173, 164)` colored shadow looks like.

```
.boxshadow{ -moz-box-shadow:4px 4px 4px  
4px rgb(202, 173, 164); -webkit-box-  
shadow:4px 4px 4px 4px rgb(202, 173, 164);  
box-shadow:4px 4px 4px 4px rgb(202, 173,  
164) }
```

Background

The CSS property to change the background color of an element to CIELCh 73, 12.426, 43.178 is called "background". The background property can be set on classes, ids or directly on the HTML element.

```
.background, #background, body{  
background: rgb(202, 173, 164) }
```

If only the background color should be changed can be used:

```
.background{ background-color: rgb(202,  
173, 164) }
```

This example shows the color as background, it is applied via the CSS property "background".

To optimize and compress your CSS code, you can use our [online CSS compressor and optimizer](#) based on csstidy. If you want to create a linear or radial gradient as background or border, check our [CSS Gradient Generator](#).

Hey! You found this booklet interesting? Support Converting Colors with the new Membership Option!

The pro membership hides all ads, plus gives you double the colors in the color bucket, and more awesome pro features!

[Learn more, Memberships starting at \\$2.50/m!](#)

**Follow me
on Twitter!**

@ConvertingColor