

Converting Colors

CIELCh(73, 13.662, 22.749)

Have a look what the booklet for
CIELCh(73, 13.662, 22.749) contains.

CIELCh(73, 13.636, 22.804)	3
<i>Conversions</i>	4
<i>Details</i>	6
<i>Harmonies</i>	11
<i>Previews</i>	20
<i>Color Blindness Simulation</i>	23
<i>CSS Examples</i>	26

Color

CIELCh(73, 13.636, 22.804)

Conversions

Conversions Part 1

Format	Color
Hex	CEABAA
RGB	206, 171, 170
RGB Percent	81%, 67%, 67%
CMY	0.1920, 0.3293, 0.3332
CMYK	0.00, 0.17, 0.17, 0.19
HSL	2°, 27%, 74%
HSV	2°, 17%, 81%
XYZ	47.2870, 45.1644, 44.2682
YIQ	181.3510, 21.1810, 7.1090

Conversions

Conversions Part 2

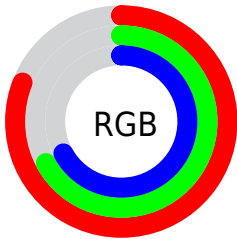
Format	Color
R _{YB}	206, 171, 170
Decimal	13544362
CIE Lab	73.00, 12.57, 5.29
CIE LCh	73, 13.636, 22.804
Yxy	45.1644, 0.3459, 0.3303
Android (android.graphics.Color)	4291734442 (0xFFCEABAA)
YUV	181.3510, -5.5960, 21.6172
Hunter-Lab	67.2044, 7.9900, 7.9883

Details

The CIELCh color **73, 13.636, 22.804** is a light color, and the websafe version is hex **CC9999**. A complement of this color would be **80, 12.154, 201.090**, and the grayscale version is **74, 0.009, 296.813**.

A 20% lighter version of the original color is **92, 10.618, 22.860**, and **53, 13.414, 23.327** is the 20% darker color. If you saturate the color by 10%, you get **68, 22.300, 23.705**, and if you desaturate by 10%, it is **79, 5.603, 22.089**.

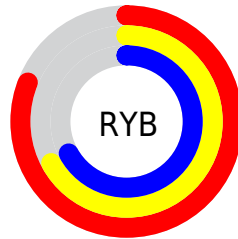
Distribution



Red (81%)

Green (67%)

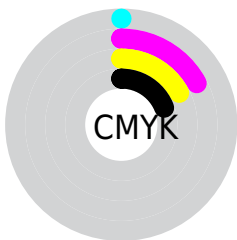
Blue (67%)



Red (81%)

Yellow (67%)

Blue (67%)

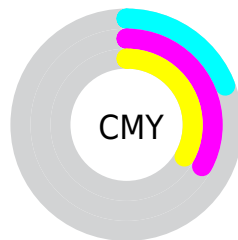


Cyan (0%)

Magenta (17%)

Yellow (17%)

Black (19%)



Cyan (19%)

Magenta (33%)

Yellow (33%)

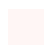
Brightness & Saturation Gradients

These gradients show how the CIELCh color 73, 13.636, 22.804 changes by changing the brightness by 10 percent. The first figure shows a shift by +10% for each color and the second figure -10%.

Similar to the brightness gradients but the following saturation gradients show a change of the CIELCh color 73, 13.636, 22.804 by changing the saturation by 10% instead.

 73, 13.636, 22.804

 73, 13.636, 22.804

 100, 13.636,
22.804

 63, 13.636, 22.804

 93, 13.636, 22.804

 53, 13.636, 22.804

 43, 13.636, 22.804

 33, 13.636, 22.804

 23, 13.636, 22.804

 13, 13.636, 22.804

 3, 13.636, 22.804

 0, 13.636, 22.804

 73, 13.636, 22.804

 73, 13.636, 22.804

68, 22.300, 23.705

79, 5.603, 22.089

62, 31.584, 24.871

84, 1.819, 201.998

58, 41.404, 26.403

90, 8.677, 201.367

53, 51.596, 28.397

96, 15.027,
201.044

50, 61.890, 30.928

97, 16.243,
198.426

47, 71.880, 33.956

44, 80.832, 37.130

43, 87.278, 39.600

43, 88.676, 40.256

Harmonies

Complementary

The Complementary color scheme is a pair of colors which are on the opposite of each other on the color wheel.



73, 13.636, 22.804



80, 12.154, 201.090

Rectangle

The Rectangle color scheme consists of four colors that form a rectangle on the color wheel.



73, 13.636, 22.804



73, 13.636, 72.804



73, 13.636, 202.804



73, 13.636, 252.804

Sweetspot

The Sweet Spot groups the original color and five complimentary colors.



73, 13.634, 22.813



97, 4.414, 21.905



74, 23.228, 325.838



51, 3.020, 21.963



0, 0.000, 0.000



53, 0.007, 296.813

Same Dimension

The Same Dimension uses a secret algorithm to generate beautiful new colors.



73, 13.634, 22.813



86, 19.777, 23.124



77, 12.038, 75.003



40, 4.251, 22.224



34, 75.170, 40.184



4, 17.614, 20.803

Inverse Universe

The Inverse Universe completely reimagines the original color for something new.



80, 12.154, 201.090



96, 17.158, 200.941



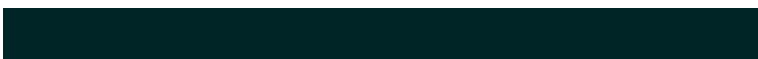
75, 11.562, 259.690



42, 4.004, 201.457



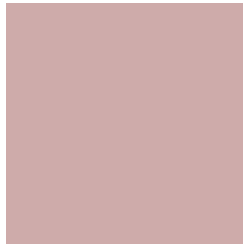
60, 34.933, 200.820



12, 13.104, 199.874

Previews

White Background



This preview shows how the CIELCh color 73, 13.636, 22.804 looks on a white background.

Color Contrast Check

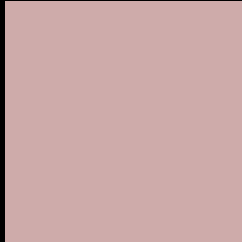
Large Text (above 18pt) WCAG AA × Fail

Any Text WCAG AA × Fail

Large Text (above 18pt) WCAG AAA × Fail

Any Text WCAG AAA × Fail

Black Background



This preview shows how the CIELCh color 73, 13.636, 22.804 looks on a black background.

Color Contrast Check

Large Text (above 18pt) WCAG AA ✓ Pass

Any Text WCAG AA ✓ Pass

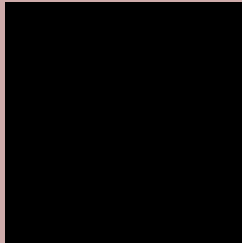
Large Text (above 18pt) WCAG AAA ✓ Pass

Any Text WCAG AAA ✓ Pass

If you want to check with other color combinations, try the [Color Contrast Checker](#).

CIELCh 73, 13.636, 22.804

Background



This preview shows how black text looks on a background with the CIELCh color 73, 13.636, 22.804.



This preview shows how white text looks on a background with the CIELCh color 73, 13.636, 22.804.

Color Blindness Simulation

Color vision deficiency is a very complex topic, and I could not describe the different causes any better than Wikipedia does, so if you want to learn more, you should check out their [article about color blindness](#).

Dichromacy



Original Color

73, 13.636, 22.804

Protanopia

73, 3.284, 74.664

Deuteranopia

73, 10.595, 29.001



Tritanopia
73, 16.377, 355.540

Trichromacy



Original Color
73, 13.636, 22.804

Protanomaly
73, 6.328, 34.640

Deuteranomaly
73, 11.699, 25.631

Tritanomaly
73, 14.795, 3.788

Monochromacy



Original Color
73, 13.636, 22.804

Achromatopsia
74, 0.009, 296.813

Achromatomaly
73, 4.924, 19.718

CSS Examples

Text

The CSS property to change the color of the text to CIELCh 73, 13.636, 22.804 is called "color". The color property can be set on classes, ids or directly on the HTML element.

This example shows how text in the color `rgb(206, 171, 170)` looks like.

```
.text, #text, p{  
    color:rgb(206, 171, 170)  
}
```

If you want to add a text shadow in that color use the text-shadow property, you can generate a text shadow directly with our [CSS Text Shadow Generator](#).

Here you see how black text with a 4 pixel rgb(206, 171, 170) colored shadow looks like.

```
.shadow{ text-shadow: 4px 4px 2px rgb(206, 171, 170) }
```

Border

The CSS property to change the border of an element to CIELCh 73, 13.636, 22.804 is called "border". The border property can be set on classes, ids or directly on the HTML element.

This example shows the color as border, it can be applied via the CSS property "border" or "border-color".

```
.border, #border, table{ border:4px solid rgb(206, 171, 170) }
```

If only the border color should be changed use the property `border-color`.

```
.border{ border-color:rgb(206, 171, 170) }
```

If you want to add a box shadow in that color use:

Here you see how a box with a 4 pixel `rgb(206, 171, 170)` colored shadow looks like.

```
.boxshadow{ -moz-box-shadow:4px 4px 4px  
4px rgb(206, 171, 170); -webkit-box-  
shadow:4px 4px 4px 4px rgb(206, 171, 170);  
box-shadow:4px 4px 4px 4px rgb(206, 171,  
170) }
```

Background

The CSS property to change the background color of an element to CIELCh 73, 13.636, 22.804 is called "background". The background property can be set on classes, ids or directly on the HTML element.

```
.background, #background, body{  
background: rgb(206, 171, 170) }
```

If only the background color should be changed can be used:

```
.background{ background-color: rgb(206,  
171, 170) }
```

This example shows the color as background, it is applied via the CSS property "background".

To optimize and compress your CSS code, you can use our [online CSS compressor and optimizer](#) based on csstidy. If you want to create a linear or radial gradient as background or border, check our [CSS Gradient Generator](#).

Hey! You found this booklet interesting? Support Converting Colors with the new Membership Option!

The pro membership hides all ads, plus gives you double the colors in the color bucket, and more awesome pro features!

[Learn more, Memberships starting at \\$2.50/m!](#)

**Follow me
on Twitter!**

@ConvertingColor