

Converting Colors

CIELCh(73, 14.255, 62.991)

Have a look what the booklet for
CIELCh(73, 14.255, 62.991) contains.

CIELCh(73, 14.285, 62.692)	3
<i>Conversions</i>	4
<i>Details</i>	6
<i>Harmonies</i>	11
<i>Previews</i>	20
<i>Color Blindness Simulation</i>	23
<i>CSS Examples</i>	26

Color

CIELCh(73, 14.285, 62.692)

Conversions

Conversions Part 1

Format	Color
Hex	C8AE9C
RGB	200, 174, 156
RGB Percent	78%, 68%, 61%
CMY	0.2142, 0.3161, 0.3868
CMYK	0.00, 0.13, 0.22, 0.21
HSL	25°, 29%, 70%
HSV	25°, 22%, 79%
XYZ	45.1652, 45.1644, 37.9546
YIQ	179.7220, 21.2740, -0.0860

Conversions

Conversions Part 2

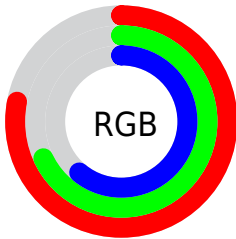
Format	Color
RYB	200, 186, 156
Decimal	13151900
CIELab	73.00, 6.55, 12.69
CIELCh	73, 14.285, 62.692
Yxy	45.1644, 0.3521, 0.3521
Android (android.graphics.Color)	4291341980 (0xFFC8AE9C)
YUV	179.7220, -11.6949, 17.7838
Hunter-Lab	67.2044, 2.3544, 13.5583

Details

The CIELCh color $73, 14.285, 62.692$ is a light color, and the websafe version is hex `CC9999`. A complement of this color would be $73, 13.029, 247.850$, and the grayscale version is $73, 0.009, 296.813$.

A 20% lighter version of the original color is $93, 13.457, 63.143$, and $53, 14.366, 62.770$ is the 20% darker color. If you saturate the color by 10%, you get $70, 21.454, 61.708$, and if you desaturate by 10%, it is $76, 7.545, 63.702$.

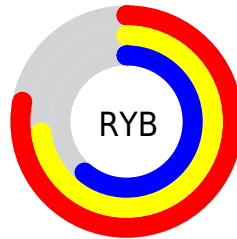
Distribution



Red (78%)

Green (68%)

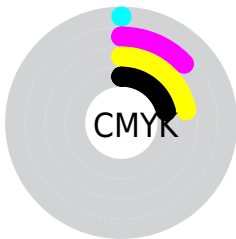
Blue (61%)



Red (78%)

Yellow (73%)

Blue (61%)

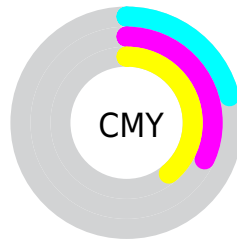


Cyan (0%)

Magenta (13%)

Yellow (22%)

Black (21%)



Cyan (21%)

Magenta (32%)

Yellow (39%)


Brightness & Saturation Gradients

These gradients show how the CIELCh color 73, 14.285, 62.692 changes by changing the brightness by 10 percent. The first figure shows a shift by +10% for each color and the second figure -10%.

Similar to the brightness gradients but the following saturation gradients show a change of the CIELCh color 73, 14.285, 62.692 by changing the saturation by 10% instead.

 73, 14.285, 62.692

 73, 14.285, 62.692

 100, 14.285,
62.692

 63, 14.285, 62.692

 93, 14.285, 62.692

 53, 14.285, 62.692

 43, 14.285, 62.692

 33, 14.285, 62.692

 23, 14.285, 62.692

 13, 14.285, 62.692

 3, 14.285, 62.692

 0, 14.285, 62.692

 73, 14.285, 62.692

 73, 14.285, 62.692

70, 21.454, 61.708

76, 7.545, 63.702

66, 29.074, 60.743

80, 1.199, 64.432

63, 37.136, 59.811

84, 4.792, 245.924

60, 45.571, 58.901

87, 10.468,
246.898

57, 54.184, 57.955

91, 15.311,
245.658

54, 62.530, 56.826

52, 69.743, 55.201

94, 15.468,
217.246

50, 74.409, 53.530

96, 17.982,
198.315

Harmonies

Complementary

The Complementary color scheme is a pair of colors which are on the opposite of each other on the color wheel.



73, 14.285, 62.692



73, 13.029, 247.850

Rectangle

The Rectangle color scheme consists of four colors that form a rectangle on the color wheel.



73, 14.285, 62.692



73, 14.285, 112.692



73, 14.285, 242.692



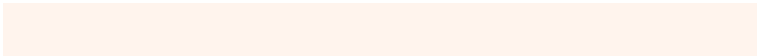
73, 14.285, 292.692

Sweetspot

The Sweet Spot groups the original color and five complimentary colors.



73, 14.285, 62.702



97, 5.287, 64.165



69, 21.922, 340.356



51, 3.442, 64.109



0, 0.000, 0.000



53, 0.007, 296.813

Same Dimension

The Same Dimension uses a secret algorithm to generate beautiful new colors.



73, 14.285, 62.702



89, 20.848, 62.262



79, 21.071, 103.492



40, 3.526, 63.953



41, 63.594, 54.123



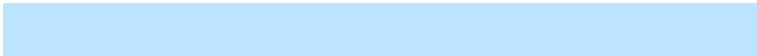
6, 13.089, 47.427

Inverse Universe

The Inverse Universe completely reimagines the original color for something new.



73, 13.029, 247.850



89, 18.622, 248.568



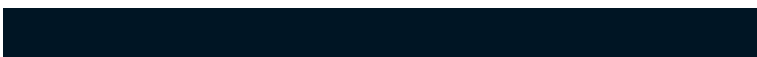
67, 21.921, 288.493



40, 3.403, 246.136



40, 42.655, 273.083



6, 12.614, 260.918

Previews

White Background



This preview shows how the CIELCh color 73, 14.285, 62.692 looks on a white background.

Color Contrast Check

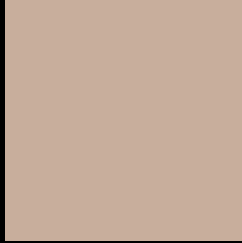
Large Text (above 18pt) WCAG AA × Fail

Any Text WCAG AA × Fail

Large Text (above 18pt) WCAG AAA × Fail

Any Text WCAG AAA × Fail

Black Background



This preview shows how the CIELCh color 73, 14.285, 62.692 looks on a black background.

Color Contrast Check

Large Text (above 18pt) WCAG AA ✓ Pass

Any Text WCAG AA ✓ Pass

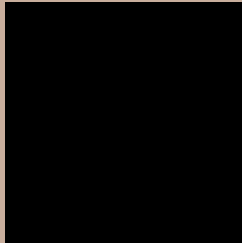
Large Text (above 18pt) WCAG AAA ✓ Pass

Any Text WCAG AAA ✓ Pass

If you want to check with other color combinations, try the [Color Contrast Checker](#).

CIELCh 73, 14.285, 62.692

Background



This preview shows how black text looks on a background with the CIELCh color 73, 14.285, 62.692.



This preview shows how white text looks on a background with the CIELCh color 73, 14.285, 62.692.

Color Blindness Simulation

Color vision deficiency is a very complex topic, and I could not describe the different causes any better than Wikipedia does, so if you want to learn more, you should check out their [article about color blindness](#).

Dichromacy



Original Color

73, 14.285, 62.692

Protanopia

73, 11.243, 92.921

Deuteranopia

73, 15.516, 53.895



Tritanopia
73, 14.900, 350.229

Trichromacy



Original Color
73, 14.285, 62.692

Protanomaly
73, 11.866, 79.242

Deuteranomaly
73, 14.845, 58.109

Tritanomaly
73, 11.985, 15.265

Monochromacy



Original Color
73, 14.285, 62.692

Achromatopsia
73, 0.009, 296.813

Achromatomaly
73, 5.101, 67.344

CSS Examples

Text

The CSS property to change the color of the text to CIELCh 73, 14.285, 62.692 is called "color". The color property can be set on classes, ids or directly on the HTML element.

This example shows how text in the color `rgb(200, 174, 156)` looks like.

```
.text, #text, p{  
    color:rgb(200, 174, 156)  
}
```

If you want to add a text shadow in that color use the text-shadow property, you can generate a text shadow directly with our [CSS Text Shadow Generator](#).

Here you see how black text with a 4 pixel rgb(200, 174, 156) colored shadow looks like.

```
.shadow{ text-shadow: 4px 4px 2px rgb(200, 174, 156) }
```

Border

The CSS property to change the border of an element to CIELCh 73, 14.285, 62.692 is called "border". The border property can be set on classes, ids or directly on the HTML element.

This example shows the color as border, it can be applied via the CSS property "border" or "border-color".

```
.border, #border, table{ border:4px solid rgb(200, 174, 156) }
```

If only the border color should be changed use the property `border-color`.

```
.border{ border-color:rgb(200, 174, 156) }
```

If you want to add a box shadow in that color use:

Here you see how a box with a 4 pixel `rgb(200, 174, 156)` colored shadow looks like.

```
.boxshadow{ -moz-box-shadow:4px 4px 4px  
4px rgb(200, 174, 156); -webkit-box-  
shadow:4px 4px 4px 4px rgb(200, 174, 156);  
box-shadow:4px 4px 4px 4px rgb(200, 174,  
156) }
```

Background

The CSS property to change the background color of an element to CIELCh 73, 14.285, 62.692 is called "background". The background property can be set on classes, ids or directly on the HTML element.

```
.background, #background, body{  
background: rgb(200, 174, 156) }
```

If only the background color should be changed can be used:

```
.background{ background-color: rgb(200,  
174, 156) }
```

This example shows the color as background, it is applied via the CSS property "background".

To optimize and compress your CSS code, you can use our [online CSS compressor and optimizer](#) based on csstidy. If you want to create a linear or radial gradient as background or border, check our [CSS Gradient Generator](#).

Hey! You found this booklet interesting? Support Converting Colors with the new Membership Option!

The pro membership hides all ads, plus gives you double the colors in the color bucket, and more awesome pro features!

[Learn more, Memberships starting at \\$2.50/m!](#)

**Follow me
on Twitter!**

@ConvertingColor