

Converting Colors

CIELCh(73, 14.780, 18.593)

Have a look what the booklet for
CIELCh(73, 14.780, 18.593) contains.

CIELCh(73, 14.780, 18.593)	3
<i>Conversions</i>	4
<i>Details</i>	6
<i>Harmonies</i>	11
<i>Previews</i>	20
<i>Color Blindness Simulation</i>	23
<i>CSS Examples</i>	26

Color

CIELCh(73, 14.780, 18.593)

Conversions

Conversions Part 1

Format	Color
Hex	D0AAAB
RGB	208, 170, 171
RGB Percent	82%, 67%, 67%
CMY	0.1838, 0.3329, 0.3290
CMYK	0.00, 0.18, 0.18, 0.18
HSL	358°, 29%, 74%
HSV	358°, 18%, 82%
XYZ	47.8039, 45.1644, 44.7833
YIQ	181.4760, 22.3270, 8.3670

Conversions

Conversions Part 2

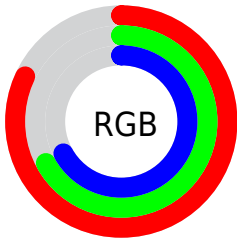
Format	Color
R _Y B	208, 170, 171
Decimal	13675179
CIE Lab	73.00, 14.01, 4.71
CIE LCh	73, 14.780, 18.593
Yxy	45.1644, 0.3470, 0.3279
Android (android.graphics.Color)	4291865259 (0xFFD0AAAB)
YUV	181.4760, -5.1647, 23.2615
Hunter-Lab	67.2044, 9.3630, 7.5338

Details

The CIELCh color $73, 14.780, 18.593$ is a light color, and the websafe version is hex `CC9999`. A complement of this color would be $81, 13.198, 196.168$, and the grayscale version is $74, 0.009, 296.813$.

A 20% lighter version of the original color is $92, 10.965, 17.446$, and $53, 14.629, 18.833$ is the 20% darker color. If you saturate the color by 10%, you get $67, 23.722, 19.691$, and if you desaturate by 10%, it is $79, 6.438, 17.707$.

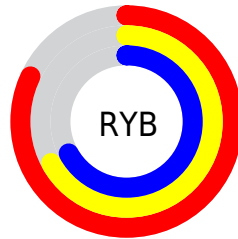
Distribution



Red (82%)

Green (67%)

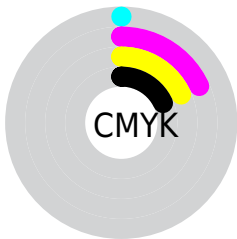
Blue (67%)



Red (82%)

Yellow (67%)

Blue (67%)

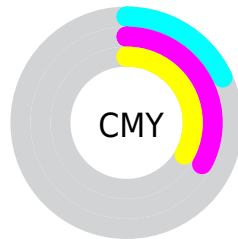


Cyan (0%)

Magenta (18%)

Yellow (18%)

Black (18%)



Cyan (18%)

Magenta (33%)

Yellow (33%)


Brightness & Saturation Gradients

These gradients show how the CIELCh color 73, 14.780, 18.593 changes by changing the brightness by 10 percent. The first figure shows a shift by +10% for each color and the second figure -10%.

Similar to the brightness gradients but the following saturation gradients show a change of the CIELCh color 73, 14.780, 18.593 by changing the saturation by 10% instead.

 73, 14.780, 18.593

 73, 14.780, 18.593

 100, 14.780,
18.593

 63, 14.780, 18.593

 93, 14.780, 18.593

 53, 14.780, 18.593

 43, 14.780, 18.593

 33, 14.780, 18.593

 23, 14.780, 18.593

 13, 14.780, 18.593

 3, 14.780, 18.593

 0, 14.780, 18.593

 73, 14.780, 18.593

 73, 14.780, 18.593

67, 23.722, 19.691

79, 6.438, 17.707

62, 33.222, 21.084

85, 1.305, 197.557

57, 43.157, 22.884

90, 8.484, 196.650

53, 53.309, 25.206

96, 15.151,
196.180

49, 63.372, 28.150

97, 15.590,
198.469

46, 72.956, 31.702

45, 81.472, 35.539

44, 87.712, 38.676

43, 88.604, 39.080

Harmonies

Complementary

The Complementary color scheme is a pair of colors which are on the opposite of each other on the color wheel.



73, 14.780, 18.593



81, 13.198, 196.168

Rectangle

The Rectangle color scheme consists of four colors that form a rectangle on the color wheel.



73, 14.780, 18.593



73, 14.780, 68.593



73, 14.780, 198.593



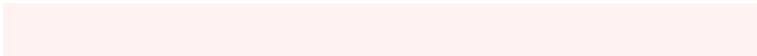
73, 14.780, 248.593

Sweetspot

The Sweet Spot groups the original color and five complimentary colors.



73, 14.778, 18.601



97, 4.541, 17.418



74, 24.510, 324.499



51, 3.106, 17.486



0, 0.000, 0.000



53, 0.007, 296.813

Same Dimension

The Same Dimension uses a secret algorithm to generate beautiful new colors.



73, 14.778, 18.601



85, 21.311, 19.007



77, 12.360, 69.550



41, 4.459, 17.805



35, 75.364, 38.795



4, 20.017, 18.244

Inverse Universe

The Inverse Universe completely reimagines the original color for something new.



73, 14.778, 18.601



85, 21.311, 19.007



76, 11.668, 254.241



41, 4.459, 17.805



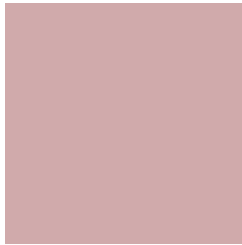
35, 75.364, 38.795



4, 20.017, 18.244

Previews

White Background



This preview shows how the CIELCh color 73, 14.780, 18.593 looks on a white background.

Color Contrast Check

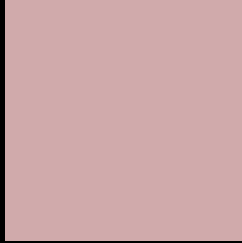
Large Text (above 18pt) WCAG AA × Fail

Any Text WCAG AA × Fail

Large Text (above 18pt) WCAG AAA × Fail

Any Text WCAG AAA × Fail

Black Background



This preview shows how the CIELCh color 73, 14.780, 18.593 looks on a black background.

Color Contrast Check

Large Text (above 18pt) WCAG AA ✓ Pass

Any Text WCAG AA ✓ Pass

Large Text (above 18pt) WCAG AAA ✓ Pass

Any Text WCAG AAA ✓ Pass

If you want to check with other color combinations, try the [Color Contrast Checker](#).

CIELCh 73, 14.780, 18.593

Background



This preview shows how black text looks on a background with the CIELCh color 73, 14.780, 18.593.



This preview shows how white text looks on a background with the CIELCh color 73, 14.780, 18.593.

Color Blindness Simulation

Color vision deficiency is a very complex topic, and I could not describe the different causes any better than Wikipedia does, so if you want to learn more, you should check out their [article about color blindness](#).

Dichromacy



Original Color

73, 14.780, 18.593

Protanopia

73, 2.200, 66.721

Deuteranopia

73, 10.502, 26.125



Tritanopia
73, 17.294, 355.093

Trichromacy



Original Color
73, 14.780, 18.593

Protanomaly
73, 6.200, 29.850

Deuteranomaly
73, 12.030, 22.958

Tritanomaly
73, 16.059, 3.287

Monochromacy



Original Color
73, 14.780, 18.593

Achromatopsia
74, 0.009, 296.813

Achromatomaly
74, 4.919, 19.715

CSS Examples

Text

The CSS property to change the color of the text to CIELCh 73, 14.780, 18.593 is called "color". The color property can be set on classes, ids or directly on the HTML element.

This example shows how text in the color `rgb(208, 170, 171)` looks like.

```
.text, #text, p{  
    color:rgb(208, 170, 171)  
}
```

If you want to add a text shadow in that color use the text-shadow property, you can generate a text shadow directly with our [CSS Text Shadow Generator](#).

Here you see how black text with a 4 pixel rgb(208, 170, 171) colored shadow looks like.

```
.shadow{ text-shadow: 4px 4px 2px rgb(208, 170, 171) }
```

Border

The CSS property to change the border of an element to CIELCh 73, 14.780, 18.593 is called "border". The border property can be set on classes, ids or directly on the HTML element.

This example shows the color as border, it can be applied via the CSS property "border" or "border-color".

```
.border, #border, table{ border:4px solid rgb(208, 170, 171) }
```

If only the border color should be changed use the property `border-color`.

```
.border{ border-color:rgb(208, 170, 171) }
```

If you want to add a box shadow in that color use:

Here you see how a box with a 4 pixel `rgb(208, 170, 171)` colored shadow looks like.

```
.boxshadow{ -moz-box-shadow:4px 4px 4px  
4px rgb(208, 170, 171); -webkit-box-  
shadow:4px 4px 4px 4px rgb(208, 170, 171);  
box-shadow:4px 4px 4px 4px rgb(208, 170,  
171) }
```

Background

The CSS property to change the background color of an element to CIELCh 73, 14.780, 18.593 is called "background". The background property can be set on classes, ids or directly on the HTML element.

```
.background, #background, body{  
background: rgb(208, 170, 171) }
```

If only the background color should be changed can be used:

```
.background{ background-color: rgb(208,  
170, 171) }
```

This example shows the color as background, it is applied via the CSS property "background".

To optimize and compress your CSS code, you can use our [online CSS compressor and optimizer](#) based on csstidy. If you want to create a linear or radial gradient as background or border, check our [CSS Gradient Generator](#).

Hey! You found this booklet interesting? Support Converting Colors with the new Membership Option!

The pro membership hides all ads, plus gives you double the colors in the color bucket, and more awesome pro features!

[Learn more, Memberships starting at \\$2.50/m!](#)

**Follow me
on Twitter!**

@ConvertingColor