

Converting Colors

CIELCh(73, 15.031, 10.624)

Have a look what the booklet for
CIELCh(73, 15.031, 10.624) contains.

CIELCh(73, 14.882, 10.304)	3
<i>Conversions</i>	4
<i>Details</i>	6
<i>Harmonies</i>	11
<i>Previews</i>	20
<i>Color Blindness Simulation</i>	23
<i>CSS Examples</i>	26

Color

CIELCh(73, 14.882, 10.304)

Conversions

Conversions Part 1

Format	Color
Hex	D0AAAF
RGB	208, 170, 175
RGB Percent	82%, 67%, 69%
CMY	0.1850, 0.3339, 0.3143
CMYK	0.00, 0.18, 0.16, 0.18
HSL	352°, 29%, 74%
HSV	352°, 18%, 82%
XYZ	48.0327, 45.1644, 46.6612
YIQ	181.9320, 21.0430, 9.6110

Conversions

Conversions Part 2

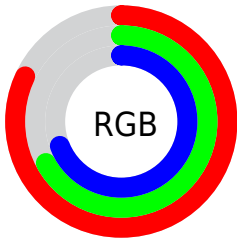
Format	Color
R _Y B	208, 170, 175
Decimal	13675183
CIE Lab	73.00, 14.64, 2.66
CIE LCh	73, 14.882, 10.304
Yxy	45.1644, 0.3434, 0.3229
Android (android.graphics.Color)	4291865263 (0xFFD0AAAF)
YUV	181.9320, -3.4175, 22.8616
Hunter-Lab	67.2044, 9.9707, 5.8771

Details

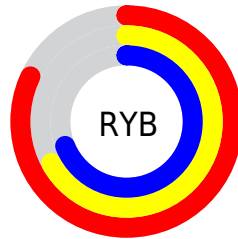
The CIELCh color **73, 14.882, 10.304** is a light color, and the websafe version is hex **CC9999**. A complement of this color would be **81, 13.615, 187.138**, and the grayscale version is **74, 0.009, 296.813**.

A 20% lighter version of the original color is **92, 11.187, 6.879**, and **53, 14.710, 9.916** is the 20% darker color. If you saturate the color by 10%, you get **68, 23.686, 11.563**, and if you desaturate by 10%, it is **79, 6.538, 9.244**.

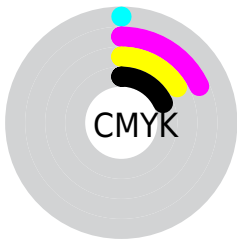
Distribution



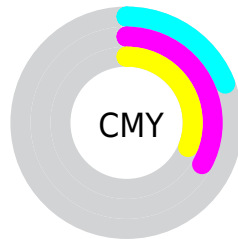
- Red (82%)
- Green (67%)
- Blue (69%)



- Red (82%)
- Yellow (67%)
- Blue (69%)



- Cyan (0%)
- Magenta (18%)
- Yellow (16%)
- Black (18%)



- Cyan (19%)
- Magenta (33%)
- Yellow (31%)

Brightness & Saturation Gradients

These gradients show how the CIELCh color 73, 14.882, 10.304 changes by changing the brightness by 10 percent. The first figure shows a shift by +10% for each color and the second figure -10%.

Similar to the brightness gradients but the following saturation gradients show a change of the CIELCh color 73, 14.882, 10.304 by changing the saturation by 10% instead.

73, 14.882, 10.304

73, 14.882, 10.304

100, 14.882,
10.304

63, 14.882, 10.304

93, 14.882, 10.304

53, 14.882, 10.304

43, 14.882, 10.304

33, 14.882, 10.304

23, 14.882, 10.304

13, 14.882, 10.304

3, 14.882, 10.304

0, 14.882, 10.304

73, 14.882, 10.304

73, 14.882, 10.304

68, 23.686, 11.563

79, 6.538, 9.244

62, 32.871, 13.102

84, 1.314, 188.889

57, 42.269, 15.031

90, 8.683, 187.812

53, 51.625, 17.476

96, 15.599,
187.158

49, 60.616, 20.578

97, 15.679,
198.463

47, 68.924, 24.436

45, 76.322, 28.997

44, 82.673, 33.779

43, 83.707, 34.498

Harmonies

Complementary

The Complementary color scheme is a pair of colors which are on the opposite of each other on the color wheel.



73, 14.882, 10.304



81, 13.615, 187.138

Rectangle

The Rectangle color scheme consists of four colors that form a rectangle on the color wheel.



73, 14.882, 10.304



73, 14.882, 60.304



73, 14.882, 190.304



73, 14.882, 240.304

Sweetspot

The Sweet Spot groups the original color and five complimentary colors.



73, 14.880, 10.310



97, 4.616, 8.899



73, 23.822, 321.614



51, 3.156, 8.979



0, 0.000, 0.000



53, 0.007, 296.813

Same Dimension

The Same Dimension uses a secret algorithm to generate beautiful new colors.



73, 14.880, 10.310



85, 21.391, 10.781



76, 12.023, 58.144



41, 4.519, 9.361



35, 70.955, 33.735



4, 20.093, 13.352

Inverse Universe

The Inverse Universe completely reimagines the original color for something new.



73, 14.880, 10.310



85, 21.391, 10.781



77, 11.016, 241.893



41, 4.519, 9.361



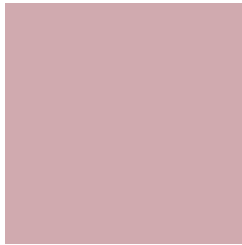
35, 70.955, 33.735



4, 20.093, 13.352

Previews

White Background



This preview shows how the CIELCh color 73, 14.882, 10.304 looks on a white background.

Color Contrast Check

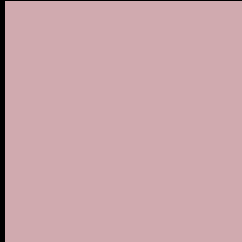
Large Text (above 18pt) WCAG AA × Fail

Any Text WCAG AA × Fail

Large Text (above 18pt) WCAG AAA × Fail

Any Text WCAG AAA × Fail

Black Background



This preview shows how the CIE LCh color 73, 14.882, 10.304 looks on a black background.

Color Contrast Check

Large Text (above 18pt) WCAG AA ✓ Pass

Any Text WCAG AA ✓ Pass

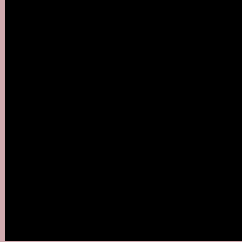
Large Text (above 18pt) WCAG AAA ✓ Pass

Any Text WCAG AAA ✓ Pass

If you want to check with other color combinations, try the [Color Contrast Checker](#).

CIELCh 73, 14.882, 10.304

Background



This preview shows how black text looks on a background with the CIELCh color 73, 14.882, 10.304.



This preview shows how white text looks on a background with the CIELCh color 73, 14.882, 10.304.

Color Blindness Simulation

Color vision deficiency is a very complex topic, and I could not describe the different causes any better than Wikipedia does, so if you want to learn more, you should check out their [article about color blindness](#).

Dichromacy



Original Color

73, 14.882, 10.304

Protanopia

73, 1.255, 353.494

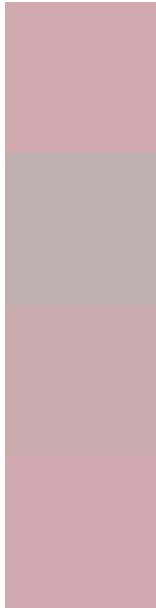
Deuteranopia

73, 9.999, 17.135



Tritanopia
73, 16.725, 356.152

Trichromacy



Original Color
73, 14.882, 10.304

Protanomaly
73, 5.785, 9.052

Deuteranomaly
73, 11.594, 15.052

Tritanomaly
73, 16.200, 1.448

Monochromacy



Original Color
73, 14.882, 10.304

Achromatopsia
74, 0.009, 296.813

Achromatomaly
74, 4.942, 13.456

CSS Examples

Text

The CSS property to change the color of the text to CIELCh 73, 14.882, 10.304 is called "color". The color property can be set on classes, ids or directly on the HTML element.

This example shows how text in the color `rgb(208, 170, 175)` looks like.

```
.text, #text, p{  
    color:rgb(208, 170, 175)  
}
```

If you want to add a text shadow in that color use the text-shadow property, you can generate a text shadow directly with our [CSS Text Shadow Generator](#).

Here you see how black text with a 4 pixel rgb(208, 170, 175) colored shadow looks like.

```
.shadow{ text-shadow: 4px 4px 2px rgb(208, 170, 175) }
```

Border

The CSS property to change the border of an element to CIELCh 73, 14.882, 10.304 is called "border". The border property can be set on classes, ids or directly on the HTML element.

This example shows the color as border, it can be applied via the CSS property "border" or "border-color".

```
.border, #border, table{ border:4px solid rgb(208, 170, 175) }
```

If only the border color should be changed use the property border-color.

```
.border{ border-color:rgb(208, 170, 175) }
```

If you want to add a box shadow in that color use:

Here you see how a box with a 4 pixel rgb(208, 170, 175) colored shadow looks like.

```
.boxshadow{ -moz-box-shadow:4px 4px 4px  
4px rgb(208, 170, 175); -webkit-box-  
shadow:4px 4px 4px 4px rgb(208, 170, 175);  
box-shadow:4px 4px 4px 4px rgb(208, 170,  
175) }
```

Background

The CSS property to change the background color of an element to CIELCh 73, 14.882, 10.304 is called "background". The background property can be set on classes, ids or directly on the HTML element.

```
.background, #background, body{  
background: rgb(208, 170, 175) }
```

If only the background color should be changed can be used:

```
.background{ background-color: rgb(208,  
170, 175) }
```

This example shows the color as background, it is applied via the CSS property "background".

To optimize and compress your CSS code, you can use our [online CSS compressor and optimizer](#) based on csstidy. If you want to create a linear or radial gradient as background or border, check our [CSS Gradient Generator](#).

Hey! You found this booklet interesting? Support Converting Colors with the new Membership Option!

The pro membership hides all ads, plus gives you double the colors in the color bucket, and more awesome pro features!

[Learn more, Memberships starting at \\$2.50/m!](#)

**Follow me
on Twitter!**

@ConvertingColor