

Converting Colors

CIELCh(73, 15.798, 57.863)

Have a look what the booklet for
CIELCh(73, 15.798, 57.863) contains.

CIELCh(73, 15.871, 57.740)	3
<i>Conversions</i>	4
<i>Details</i>	6
<i>Harmonies</i>	11
<i>Previews</i>	20
<i>Color Blindness Simulation</i>	23
<i>CSS Examples</i>	26

Color

CIELCh(73, 15.871, 57.740)

Conversions

Conversions Part 1

Format	Color
Hex	CCAD9B
RGB	204, 173, 155
RGB Percent	80%, 68%, 61%
CMY	0.1995, 0.3210, 0.3916
CMYK	0.00, 0.15, 0.24, 0.20
HSL	22°, 33%, 70%
HSV	22°, 24%, 80%
XYZ	45.8345, 45.1644, 37.3686
YIQ	180.2170, 24.2540, 0.9740

Conversions

Conversions Part 2

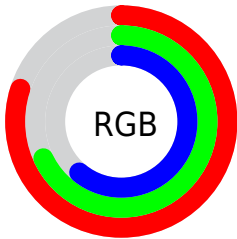
Format	Color
RYB	204, 183, 155
Decimal	13413787
CIELab	73.00, 8.47, 13.42
CIELCh	73, 15.871, 57.740
Yxy	45.1644, 0.3571, 0.3518
Android (android.graphics.Color)	4291603867 (0xFFCCAD9B)
YUV	180.2170, -12.4320, 20.8577
Hunter-Lab	67.2044, 4.1320, 14.0753

Details

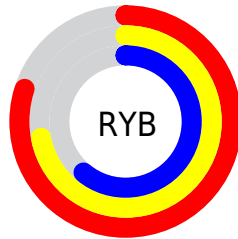
The CIELCh color **73, 15.871, 57.740** is a light color, and the websafe version is hex **CC9999**. A complement of this color would be **74, 14.105, 242.789**, and the grayscale version is **73, 0.009, 296.813**.

A 20% lighter version of the original color is **92, 14.118, 63.517**, and **53, 15.749, 58.453** is the 20% darker color. If you saturate the color by 10%, you get **69, 23.279, 56.935**, and if you desaturate by 10%, it is **77, 8.948, 58.598**.

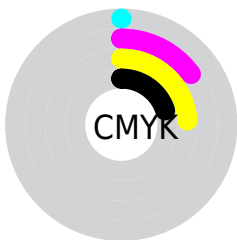
Distribution



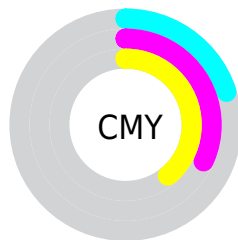
- Red (80%)
- Green (68%)
- Blue (61%)



- Red (80%)
- Yellow (72%)
- Blue (61%)



- Cyan (0%)
- Magenta (15%)
- Yellow (24%)
- Black (20%)



- Cyan (20%)
- Magenta (32%)
- Yellow (39%)


Brightness & Saturation Gradients

These gradients show how the CIELCh color 73, 15.871, 57.740 changes by changing the brightness by 10 percent. The first figure shows a shift by +10% for each color and the second figure -10%.

Similar to the brightness gradients but the following saturation gradients show a change of the CIELCh color 73, 15.871, 57.740 by changing the saturation by 10% instead.

 73, 15.871, 57.740

 73, 15.871, 57.740

 100, 15.871,
57.740

 63, 15.871, 57.740

 93, 15.871, 57.740

 53, 15.871, 57.740

 43, 15.871, 57.740

 33, 15.871, 57.740

 23, 15.871, 57.740

 13, 15.871, 57.740

 3, 15.871, 57.740

 0, 15.871, 57.740

 73, 15.871, 57.740

 73, 15.871, 57.740

69, 23.279, 56.935

77, 8.948, 58.598

66, 31.197, 56.175

81, 2.473, 59.361

62, 39.613, 55.480

84, 3.599, 240.603

59, 48.447, 54.833

88, 9.313, 241.445

56, 57.472, 54.167

92, 14.028,
238.663

53, 66.171, 53.304

96, 15.472,
206.903

51, 73.527, 51.859

49, 77.233, 50.822

97, 16.830,
198.389

Harmonies

Complementary

The Complementary color scheme is a pair of colors which are on the opposite of each other on the color wheel.



73, 15.871, 57.740



74, 14.105, 242.789

Rectangle

The Rectangle color scheme consists of four colors that form a rectangle on the color wheel.



73, 15.871, 57.740



73, 15.871, 107.740



73, 15.871, 237.740



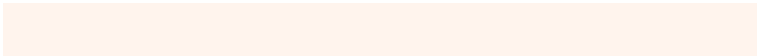
73, 15.871, 287.740

Sweetspot

The Sweet Spot groups the original color and five complimentary colors.



73, 15.871, 57.750



97, 5.233, 59.165



69, 24.898, 338.945



51, 3.407, 59.118



0, 0.000, 0.000



53, 0.007, 296.813

Same Dimension

The Same Dimension uses a secret algorithm to generate beautiful new colors.



73, 15.871, 57.750



87, 23.399, 57.306



79, 22.615, 101.517



41, 3.566, 58.984



40, 65.815, 51.386



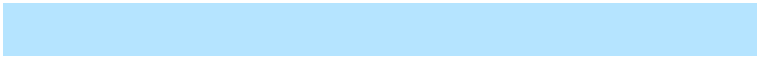
7, 14.823, 43.017

Inverse Universe

The Inverse Universe completely reimagines the original color for something new.



74, 14.105, 242.789



88, 20.179, 243.636



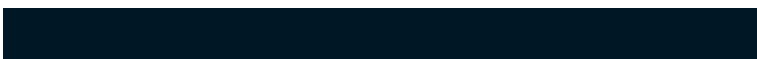
67, 23.506, 287.198



41, 3.421, 240.947



42, 39.780, 267.140



7, 12.857, 255.501

Previews

White Background



This preview shows how the CIELCh color 73, 15.871, 57.740 looks on a white background.

Color Contrast Check

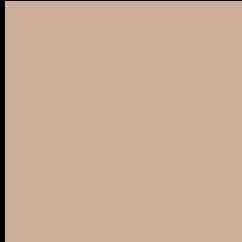
Large Text (above 18pt) WCAG AA × Fail

Any Text WCAG AA × Fail

Large Text (above 18pt) WCAG AAA × Fail

Any Text WCAG AAA × Fail

Black Background



This preview shows how the CIELCh color 73, 15.871, 57.740 looks on a black background.

Color Contrast Check

Large Text (above 18pt) WCAG AA ✓ Pass

Any Text WCAG AA ✓ Pass

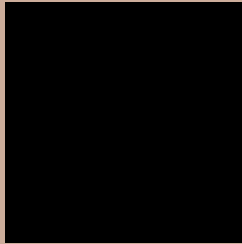
Large Text (above 18pt) WCAG AAA ✓ Pass

Any Text WCAG AAA ✓ Pass

If you want to check with other color combinations, try the [Color Contrast Checker](#).

CIELCh 73, 15.871, 57.740

Background



This preview shows how black text looks on a background with the CIELCh color 73, 15.871, 57.740.



This preview shows how white text looks on a background with the CIELCh color 73, 15.871, 57.740.

Color Blindness Simulation

Color vision deficiency is a very complex topic, and I could not describe the different causes any better than Wikipedia does, so if you want to learn more, you should check out their [article about color blindness](#).

Dichromacy



Original Color

73, 15.871, 57.740

Protanopia

73, 11.875, 91.732

Deuteranopia

73, 16.199, 56.870



Tritanopia
73, 16.031, 354.904

Trichromacy



Original Color
73, 15.871, 57.740

Protanomaly
73, 12.753, 77.252

Deuteranomaly
73, 16.199, 56.870

Tritanomaly
73, 13.572, 18.290

Monochromacy



Original Color
73, 15.871, 57.740

Achromatopsia
73, 0.009, 296.813

Achromatomaly
73, 5.651, 61.544

CSS Examples

Text

The CSS property to change the color of the text to CIELCh 73, 15.871, 57.740 is called "color". The color property can be set on classes, ids or directly on the HTML element.

This example shows how text in the color `rgb(204, 173, 155)` looks like.

```
.text, #text, p{  
    color:rgb(204, 173, 155)  
}
```

If you want to add a text shadow in that color use the text-shadow property, you can generate a text shadow directly with our [CSS Text Shadow Generator](#).

Here you see how black text with a 4 pixel rgb(204, 173, 155) colored shadow looks like.

```
.shadow{ text-shadow: 4px 4px 2px rgb(204, 173, 155) }
```

Border

The CSS property to change the border of an element to CIELCh 73, 15.871, 57.740 is called "border". The border property can be set on classes, ids or directly on the HTML element.

This example shows the color as border, it can be applied via the CSS property "border" or "border-color".

```
.border, #border, table{ border:4px solid rgb(204, 173, 155) }
```

If only the border color should be changed use the property `border-color`.

```
.border{ border-color:rgb(204, 173, 155) }
```

If you want to add a box shadow in that color use:

Here you see how a box with a 4 pixel `rgb(204, 173, 155)` colored shadow looks like.

```
.boxshadow{ -moz-box-shadow:4px 4px 4px  
4px rgb(204, 173, 155); -webkit-box-  
shadow:4px 4px 4px 4px rgb(204, 173, 155);  
box-shadow:4px 4px 4px 4px rgb(204, 173,  
155) }
```

Background

The CSS property to change the background color of an element to CIELCh 73, 15.871, 57.740 is called "background". The background property can be set on classes, ids or directly on the HTML element.

```
.background, #background, body{  
background: rgb(204, 173, 155) }
```

If only the background color should be changed can be used:

```
.background{ background-color: rgb(204,  
173, 155) }
```

This example shows the color as background, it is applied via the CSS property "background".

To optimize and compress your CSS code, you can use our [online CSS compressor and optimizer](#) based on csstidy. If you want to create a linear or radial gradient as background or border, check our [CSS Gradient Generator](#).

Hey! You found this booklet interesting? Support Converting Colors with the new Membership Option!

The pro membership hides all ads, plus gives you double the colors in the color bucket, and more awesome pro features!

[Learn more, Memberships starting at \\$2.50/m!](#)

**Follow me
on Twitter!**

@ConvertingColor