

Converting Colors

CIELCh(73, 15.891, 18.368)

Have a look what the booklet for
CIELCh(73, 15.891, 18.368) contains.

CIELCh(73, 15.984, 16.948)	3
<i>Conversions</i>	4
<i>Details</i>	6
<i>Harmonies</i>	11
<i>Previews</i>	20
<i>Color Blindness Simulation</i>	23
<i>CSS Examples</i>	26

Color

CIELCh(73, 15.984, 16.948)

Conversions

Conversions Part 1

Format	Color
Hex	D2A9AB
RGB	210, 169, 171
RGB Percent	82%, 66%, 67%
CMY	0.1754, 0.3362, 0.3284
CMYK	0.00, 0.20, 0.19, 0.18
HSL	357°, 31%, 74%
HSV	357°, 20%, 82%
XYZ	48.2675, 45.1644, 44.8313
YIQ	181.4870, 23.7940, 9.3140

Conversions

Conversions Part 2

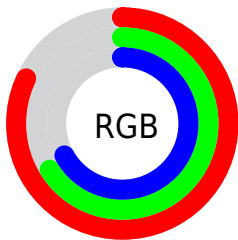
Format	Color
R _Y B	210, 169, 171
Decimal	13805995
CIE Lab	73.00, 15.29, 4.66
CIE LCh	73, 15.984, 16.948
Yxy	45.1644, 0.3491, 0.3267
Android (android.graphics.Color)	4291996075 (0xFFD2A9AB)
YUV	181.4870, -5.1701, 25.0059
Hunter-Lab	67.2044, 10.5943, 7.4914

Details

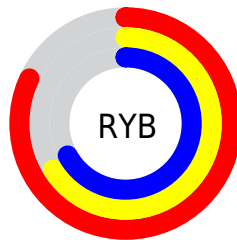
The CIELCh color $73, 15.984, 16.948$ is a light color, and the websafe version is hex `CC9999`. A complement of this color would be $81, 14.231, 194.115$, and the grayscale version is $74, 0.009, 296.813$.

A 20% lighter version of the original color is $92, 11.364, 14.980$, and $53, 15.919, 17.137$ is the 20% darker color. If you saturate the color by 10%, you get $67, 25.028, 18.124$, and if you desaturate by 10%, it is $79, 7.511, 15.997$.

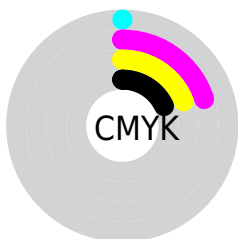
Distribution



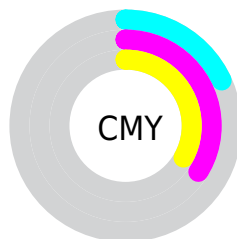
- Red (82%)
- Green (66%)
- Blue (67%)



- Red (82%)
- Yellow (66%)
- Blue (67%)



- Cyan (0%)
- Magenta (20%)
- Yellow (19%)
- Black (18%)



- Cyan (18%)
- Magenta (34%)
- Yellow (33%)

Brightness & Saturation Gradients

These gradients show how the CIELCh color 73, 15.984, 16.948 changes by changing the brightness by 10 percent. The first figure shows a shift by +10% for each color and the second figure -10%.

Similar to the brightness gradients but the following saturation gradients show a change of the CIELCh color 73, 15.984, 16.948 by changing the saturation by 10% instead.

■ 73, 15.984, 16.948

■ 73, 15.984, 16.948

■ 100, 15.984,
16.948

■ 63, 15.984, 16.948

■ 93, 15.984, 16.948

■ 53, 15.984, 16.948

■ 43, 15.984, 16.948

■ 33, 15.984, 16.948

■ 23, 15.984, 16.948

■ 13, 15.984, 16.948

■ 3, 15.984, 16.948

■ 0, 15.984, 16.948

■ 73, 15.984, 16.948

■ 73, 15.984, 16.948

67, 25.028, 18.124

79, 7.511, 15.997

62, 34.584, 19.607

85, 0.378, 196.834

57, 44.508, 21.509

91, 7.711, 194.804

53, 54.561, 23.953

96, 14.534,
194.269

49, 64.427, 27.041

97, 14.913,
198.512

47, 73.735, 30.771

45, 81.976, 34.835

44, 88.187, 38.238

44, 88.433, 38.349

Harmonies

Complementary

The Complementary color scheme is a pair of colors which are on the opposite of each other on the color wheel.



73, 15.984, 16.948



81, 14.231, 194.115

Rectangle

The Rectangle color scheme consists of four colors that form a rectangle on the color wheel.



73, 15.984, 16.948



73, 15.984, 66.948



73, 15.984, 196.948



73, 15.984, 246.948

Sweetspot

The Sweet Spot groups the original color and five complimentary colors.



73, 15.982, 16.955



96, 5.478, 15.682



74, 26.281, 324.092



51, 3.642, 15.744



0, 0.000, 0.000



53, 0.007, 296.813

Same Dimension

The Same Dimension uses a secret algorithm to generate beautiful new colors.



73, 15.982, 16.955



84, 22.335, 17.363



78, 13.262, 67.561



41, 4.463, 15.988



35, 74.454, 37.858



4, 20.022, 17.197

Inverse Universe

The Inverse Universe completely reimagines the original color for something new.



73, 15.982, 16.955



84, 22.335, 17.363



77, 12.396, 252.479



41, 4.463, 15.988



35, 74.454, 37.858



4, 20.022, 17.197

Previews

White Background



This preview shows how the CIELCh color 73, 15.984, 16.948 looks on a white background.

Color Contrast Check

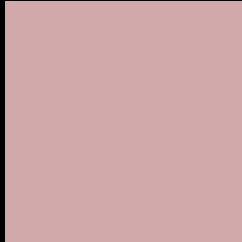
Large Text (above 18pt) WCAG AA × Fail

Any Text WCAG AA × Fail

Large Text (above 18pt) WCAG AAA × Fail

Any Text WCAG AAA × Fail

Black Background



This preview shows how the CIELCh color 73, 15.984, 16.948 looks on a black background.

Color Contrast Check

Large Text (above 18pt) WCAG AA ✓ Pass

Any Text WCAG AA ✓ Pass

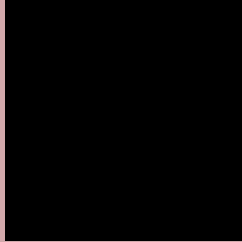
Large Text (above 18pt) WCAG AAA ✓ Pass

Any Text WCAG AAA ✓ Pass

If you want to check with other color combinations, try the [Color Contrast Checker](#).

CIELCh 73, 15.984, 16.948

Background



This preview shows how black text looks on a background with the CIELCh color 73, 15.984, 16.948.



This preview shows how white text looks on a background with the CIELCh color 73, 15.984, 16.948.

Color Blindness Simulation

Color vision deficiency is a very complex topic, and I could not describe the different causes any better than Wikipedia does, so if you want to learn more, you should check out their [article about color blindness](#).

Dichromacy



Original Color

73, 15.984, 16.948

Protanopia

73, 2.200, 66.721

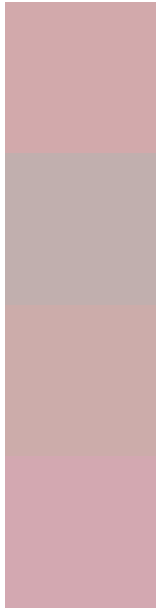
Deuteranopia

73, 10.595, 29.001



Tritanopia
73, 17.800, 357.865

Trichromacy



Original Color
73, 15.984, 16.948

Protanomaly
73, 6.899, 24.397

Deuteranomaly
73, 12.491, 25.363

Tritanomaly
73, 17.199, 4.609

Monochromacy



Original Color
73, 15.984, 16.948

Achromatopsia
74, 0.009, 296.813

Achromatomaly
73, 5.710, 14.382

CSS Examples

Text

The CSS property to change the color of the text to CIELCh 73, 15.984, 16.948 is called "color". The color property can be set on classes, ids or directly on the HTML element.

This example shows how text in the color `rgb(210, 169, 171)` looks like.

```
.text, #text, p{  
    color:rgb(210, 169, 171)  
}
```

If you want to add a text shadow in that color use the text-shadow property, you can generate a text shadow directly with our [CSS Text Shadow Generator](#).

Here you see how black text with a 4 pixel rgb(210, 169, 171) colored shadow looks like.

```
.shadow{ text-shadow: 4px 4px 2px rgb(210, 169, 171) }
```

Border

The CSS property to change the border of an element to CIELCh 73, 15.984, 16.948 is called "border". The border property can be set on classes, ids or directly on the HTML element.

This example shows the color as border, it can be applied via the CSS property "border" or "border-color".

```
.border, #border, table{ border:4px solid rgb(210, 169, 171) }
```

If only the border color should be changed use the property `border-color`.

```
.border{ border-color:rgb(210, 169, 171) }
```

If you want to add a box shadow in that color use:

Here you see how a box with a 4 pixel `rgb(210, 169, 171)` colored shadow looks like.

```
.boxshadow{ -moz-box-shadow:4px 4px 4px  
4px rgb(210, 169, 171); -webkit-box-  
shadow:4px 4px 4px 4px rgb(210, 169, 171);  
box-shadow:4px 4px 4px 4px rgb(210, 169,  
171) }
```

Background

The CSS property to change the background color of an element to CIELCh 73, 15.984, 16.948 is called "background". The background property can be set on classes, ids or directly on the HTML element.

```
.background, #background, body{  
background: rgb(210, 169, 171) }
```

If only the background color should be changed can be used:

```
.background{ background-color: rgb(210,  
169, 171) }
```

This example shows the color as background, it is applied via the CSS property "background".

To optimize and compress your CSS code, you can use our [online CSS compressor and optimizer](#) based on csstidy. If you want to create a linear or radial gradient as background or border, check our [CSS Gradient Generator](#).

Hey! You found this booklet interesting? Support Converting Colors with the new Membership Option!

The pro membership hides all ads, plus gives you double the colors in the color bucket, and more awesome pro features!

[Learn more, Memberships starting at \\$2.50/m!](#)

**Follow me
on Twitter!**

@ConvertingColor