

Converting Colors

CIELCh(73, 16.214, 59.150)

Have a look what the booklet for
CIELCh(73, 16.214, 59.150) contains.

CIELCh(73, 16.235, 59.140)	3
<i>Conversions</i>	4
<i>Details</i>	6
<i>Harmonies</i>	11
<i>Previews</i>	20
<i>Color Blindness Simulation</i>	23
<i>CSS Examples</i>	26

Color

CIELCh(73, 16.235, 59.140)

Conversions

Conversions Part 1

Format	Color
Hex	CCAD9A
RGB	204, 173, 154
RGB Percent	80%, 68%, 60%
CMY	0.1992, 0.3208, 0.3953
CMYK	0.00, 0.15, 0.24, 0.20
HSL	23°, 33%, 70%
HSV	23°, 24%, 80%
XYZ	45.7841, 45.1644, 36.9575
YIQ	180.1030, 24.5750, 0.6630

Conversions

Conversions Part 2

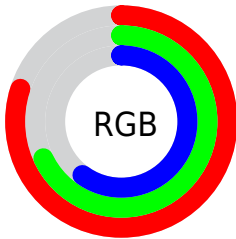
Format	Color
R _Y B	204, 185, 154
Decimal	13413786
CIE Lab	73.00, 8.33, 13.94
CIE LCh	73, 16.235, 59.140
Yxy	45.1644, 0.3580, 0.3531
Android (android.graphics.Color)	4291603866 (0xFFCCAD9A)
YUV	180.1030, -12.8688, 20.9577
Hunter-Lab	67.2044, 3.9982, 14.4380

Details

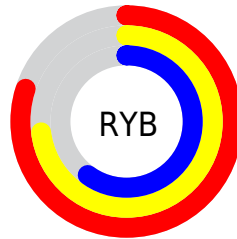
The CIELCh color **73, 16.235, 59.140** is a light color, and the websafe version is hex **CC9999**. A complement of this color would be **74, 14.461, 244.519**, and the grayscale version is **73, 0.009, 296.813**.

A 20% lighter version of the original color is **92, 14.494, 64.902**, and **53, 16.148, 59.903** is the 20% darker color. If you saturate the color by 10%, you get **69, 23.653, 58.280**, and if you desaturate by 10%, it is **77, 9.291, 60.047**.

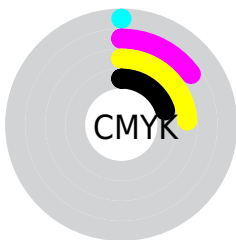
Distribution



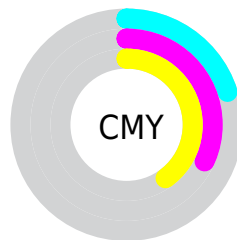
- Red (80%)
- Green (68%)
- Blue (60%)



- Red (80%)
- Yellow (73%)
- Blue (60%)



- Cyan (0%)
- Magenta (15%)
- Yellow (24%)
- Black (20%)



- Cyan (20%)
- Magenta (32%)
- Yellow (40%)


Brightness & Saturation Gradients

These gradients show how the CIELCh color 73, 16.235, 59.140 changes by changing the brightness by 10 percent. The first figure shows a shift by +10% for each color and the second figure -10%.

Similar to the brightness gradients but the following saturation gradients show a change of the CIELCh color 73, 16.235, 59.140 by changing the saturation by 10% instead.

 73, 16.235, 59.140

 73, 16.235, 59.140

 100, 16.235,
59.140

 63, 16.235, 59.140

 93, 16.235, 59.140

 53, 16.235, 59.140

 43, 16.235, 59.140

 33, 16.235, 59.140

 23, 16.235, 59.140

 13, 16.235, 59.140

 3, 16.235, 59.140

 0, 16.235, 59.140

 73, 16.235, 59.140

 73, 16.235, 59.140

69, 23.653, 58.280

77, 9.291, 60.047

66, 31.567, 57.459

80, 2.785, 60.876

63, 39.962, 56.692

84, 3.326, 242.140

59, 48.747, 55.960

88, 9.085, 243.009

56, 57.686, 55.193

92, 14.113,
241.846

54, 66.237, 54.203

95, 15.081,
210.088

51, 73.367, 52.603

50, 76.710, 51.594

97, 16.811,
198.390

Harmonies

Complementary

The Complementary color scheme is a pair of colors which are on the opposite of each other on the color wheel.



73, 16.235, 59.140



74, 14.461, 244.519

Rectangle

The Rectangle color scheme consists of four colors that form a rectangle on the color wheel.



73, 16.235, 59.140



73, 16.235, 109.140



73, 16.235, 239.140



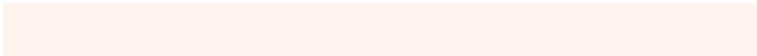
73, 16.235, 289.140

Sweetspot

The Sweet Spot groups the original color and five complimentary colors.



73, 16.235, 59.149



97, 5.245, 60.690



69, 25.411, 338.987



51, 3.415, 60.641



0, 0.000, 0.000



53, 0.007, 296.813

Same Dimension

The Same Dimension uses a secret algorithm to generate beautiful new colors.



73, 16.235, 59.149



87, 23.406, 58.719



79, 23.077, 101.463



41, 3.573, 60.498



41, 65.362, 52.168



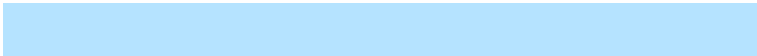
7, 14.749, 44.221

Inverse Universe

The Inverse Universe completely reimagines the original color for something new.



74, 14.461, 244.519



88, 20.307, 245.316



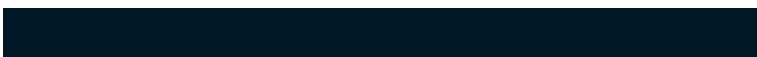
67, 24.007, 287.273



41, 3.434, 242.536



42, 40.765, 269.047



7, 13.044, 257.372

Previews

White Background



This preview shows how the CIELCh color 73, 16.235, 59.140 looks on a white background.

Color Contrast Check

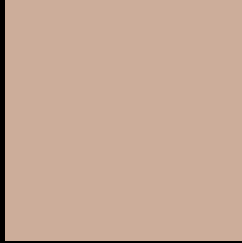
Large Text (above 18pt) WCAG AA × Fail

Any Text WCAG AA × Fail

Large Text (above 18pt) WCAG AAA × Fail

Any Text WCAG AAA × Fail

Black Background



This preview shows how the CIELCh color 73, 16.235, 59.140 looks on a black background.

Color Contrast Check

Large Text (above 18pt) WCAG AA ✓ Pass

Any Text WCAG AA ✓ Pass

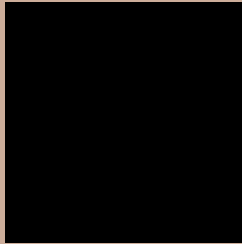
Large Text (above 18pt) WCAG AAA ✓ Pass

Any Text WCAG AAA ✓ Pass

If you want to check with other color combinations, try the [Color Contrast Checker](#).

CIELCh 73, 16.235, 59.140

Background



This preview shows how black text looks on a background with the CIELCh color 73, 16.235, 59.140.



This preview shows how white text looks on a background with the CIELCh color 73, 16.235, 59.140.

Color Blindness Simulation

Color vision deficiency is a very complex topic, and I could not describe the different causes any better than Wikipedia does, so if you want to learn more, you should check out their [article about color blindness](#).

Dichromacy



Original Color

73, 16.235, 59.140

Protanopia

73, 12.394, 92.393

Deuteranopia

73, 16.884, 57.413



Tritanopia
73, 16.377, 355.540

Trichromacy



Original Color
73, 16.235, 59.140

Protanomaly
73, 13.223, 78.390

Deuteranomaly
73, 16.557, 58.260

Tritanomaly
73, 13.968, 18.392

Monochromacy



Original Color
73, 16.235, 59.140

Achromatopsia
73, 0.009, 296.813

Achromatomaly
73, 5.651, 61.544

CSS Examples

Text

The CSS property to change the color of the text to CIELCh 73, 16.235, 59.140 is called "color". The color property can be set on classes, ids or directly on the HTML element.

This example shows how text in the color `rgb(204, 173, 154)` looks like.

```
.text, #text, p{  
    color:rgb(204, 173, 154)  
}
```

If you want to add a text shadow in that color use the text-shadow property, you can generate a text shadow directly with our [CSS Text Shadow Generator](#).

Here you see how black text with a 4 pixel rgb(204, 173, 154) colored shadow looks like.

```
.shadow{ text-shadow: 4px 4px 2px rgb(204, 173, 154) }
```

Border

The CSS property to change the border of an element to CIELCh 73, 16.235, 59.140 is called "border". The border property can be set on classes, ids or directly on the HTML element.

This example shows the color as border, it can be applied via the CSS property "border" or "border-color".

```
.border, #border, table{ border:4px solid rgb(204, 173, 154) }
```

If only the border color should be changed use the property `border-color`.

```
.border{ border-color:rgb(204, 173, 154) }
```

If you want to add a box shadow in that color use:

Here you see how a box with a 4 pixel `rgb(204, 173, 154)` colored shadow looks like.

```
.boxshadow{ -moz-box-shadow:4px 4px 4px  
4px rgb(204, 173, 154); -webkit-box-  
shadow:4px 4px 4px 4px rgb(204, 173, 154);  
box-shadow:4px 4px 4px 4px rgb(204, 173,  
154) }
```

Background

The CSS property to change the background color of an element to CIELCh 73, 16.235, 59.140 is called "background". The background property can be set on classes, ids or directly on the HTML element.

```
.background, #background, body{  
background: rgb(204, 173, 154) }
```

If only the background color should be changed can be used:

```
.background{ background-color: rgb(204,  
173, 154) }
```

This example shows the color as background, it is applied via the CSS property "background".

To optimize and compress your CSS code, you can use our [online CSS compressor and optimizer](#) based on csstidy. If you want to create a linear or radial gradient as background or border, check our [CSS Gradient Generator](#).

Hey! You found this booklet interesting? Support Converting Colors with the new Membership Option!

The pro membership hides all ads, plus gives you double the colors in the color bucket, and more awesome pro features!

[Learn more, Memberships starting at \\$2.50/m!](#)

**Follow me
on Twitter!**

@ConvertingColor