

Converting Colors

CIELCh(73, 16.243, 40.273)

Have a look what the booklet for
CIELCh(73, 16.243, 40.273) contains.

CIELCh(73, 16.099, 40.042)	3
<i>Conversions</i>	4
<i>Details</i>	6
<i>Harmonies</i>	11
<i>Previews</i>	20
<i>Color Blindness Simulation</i>	23
<i>CSS Examples</i>	26

Color

CIELCh(73, 16.099, 40.042)

Conversions

Conversions Part 1

Format	Color
Hex	D1ABA1
RGB	209, 171, 161
RGB Percent	82%, 67%, 63%
CMY	0.1810, 0.3300, 0.3692
CMYK	0.00, 0.18, 0.23, 0.18
HSL	13°, 34%, 72%
HSV	13°, 23%, 82%
XYZ	47.1993, 45.1644, 39.8756
YIQ	181.2220, 25.8580, 4.9460

Conversions

Conversions Part 2

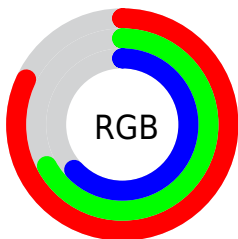
Format	Color
RYB	209, 174, 161
Decimal	13740961
CIELab	73.00, 12.32, 10.36
CIELCh	73, 16.099, 40.042
Yxy	45.1644, 0.3569, 0.3415
Android (android.graphics.Color)	4291931041 (0xFFD1ABA1)
YUV	181.2220, -9.9694, 24.3613
Hunter-Lab	67.2044, 7.7569, 11.8635

Details

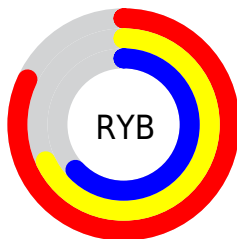
The CIELCh color $73, 16.099, 40.042$ is a light color, and the websafe version is hex `CC9999`. A complement of this color would be $78, 13.821, 221.493$, and the grayscale version is $74, 0.009, 296.813$.

A 20% lighter version of the original color is $92, 11.947, 45.475$, and $53, 16.227, 41.482$ is the 20% darker color. If you saturate the color by 10%, you get $68, 24.087, 40.100$, and if you desaturate by 10%, it is $78, 8.724, 40.120$.

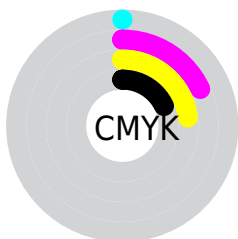
Distribution



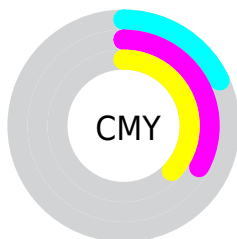
- Red (82%)
- Green (67%)
- Blue (63%)



- Red (82%)
- Yellow (68%)
- Blue (63%)



- Cyan (0%)
- Magenta (18%)
- Yellow (23%)
- Black (18%)



- Cyan (18%)
- Magenta (33%)
- Yellow (37%)

Brightness & Saturation Gradients

These gradients show how the CIELCh color 73, 16.099, 40.042 changes by changing the brightness by 10 percent. The first figure shows a shift by +10% for each color and the second figure -10%.

Similar to the brightness gradients but the following saturation gradients show a change of the CIELCh color 73, 16.099, 40.042 by changing the saturation by 10% instead.

73, 16.099, 40.042

73, 16.099, 40.042

100, 16.099,
40.042

63, 16.099, 40.042

93, 16.099, 40.042

53, 16.099, 40.042

43, 16.099, 40.042

33, 16.099, 40.042

23, 16.099, 40.042

13, 16.099, 40.042

3, 16.099, 40.042

0, 16.099, 40.042

73, 16.099, 40.042

73, 16.099, 40.042

68, 24.087, 40.100

78, 8.724, 40.120

64, 32.715, 40.315

82, 1.922, 40.095

60, 41.968, 40.733

87, 4.363, 220.793

56, 51.760, 41.376

92, 10.187,
221.054

53, 61.873, 42.211

97, 14.864,
201.495

50, 71.807, 43.080

47, 80.453, 43.525

97, 15.366,
198.483

46, 85.291, 43.562

Harmonies

Complementary

The Complementary color scheme is a pair of colors which are on the opposite of each other on the color wheel.



73, 16.099, 40.042



78, 13.821, 221.493

Rectangle

The Rectangle color scheme consists of four colors that form a rectangle on the color wheel.



73, 16.099, 40.042



73, 16.099, 90.042



73, 16.099, 220.042



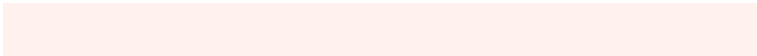
73, 16.099, 270.042

Sweetspot

The Sweet Spot groups the original color and five complimentary colors.



73, 16.098, 40.051



96, 5.401, 40.172



72, 27.245, 331.978



51, 3.518, 40.169



0, 0.000, 0.000



53, 0.007, 296.813

Same Dimension

The Same Dimension uses a secret algorithm to generate beautiful new colors.



73, 16.098, 40.051



85, 23.586, 40.059



79, 18.741, 90.825



42, 3.762, 40.156



37, 72.265, 43.944



6, 17.693, 30.976

Inverse Universe

The Inverse Universe completely reimagines the original color for something new.



78, 13.821, 221.493



92, 19.449, 221.858



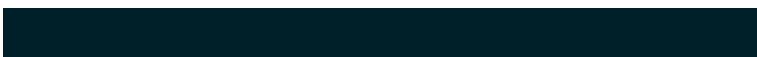
71, 18.812, 276.987



43, 3.551, 220.858



51, 32.307, 237.089



11, 12.197, 228.325

Previews

White Background



This preview shows how the CIELCh color 73, 16.099, 40.042 looks on a white background.

Color Contrast Check

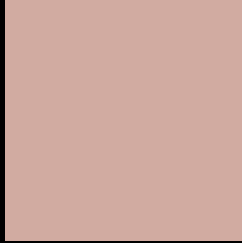
Large Text (above 18pt) WCAG AA × Fail

Any Text WCAG AA × Fail

Large Text (above 18pt) WCAG AAA × Fail

Any Text WCAG AAA × Fail

Black Background



This preview shows how the CIELCh color 73, 16.099, 40.042 looks on a black background.

Color Contrast Check

Large Text (above 18pt) WCAG AA ✓ Pass

Any Text WCAG AA ✓ Pass

Large Text (above 18pt) WCAG AAA ✓ Pass

Any Text WCAG AAA ✓ Pass

If you want to check with other color combinations, try the [Color Contrast Checker](#).

CIELCh 73, 16.099, 40.042

Background



This preview shows how black text looks on a background with the CIELCh color 73, 16.099, 40.042.



This preview shows how white text looks on a background with the CIELCh color 73, 16.099, 40.042.

Color Blindness Simulation

Color vision deficiency is a very complex topic, and I could not describe the different causes any better than Wikipedia does, so if you want to learn more, you should check out their [article about color blindness](#).

Dichromacy



Original Color

73, 16.099, 40.042

Protanopia

73, 8.024, 89.706

Deuteranopia

73, 14.227, 49.678



Tritanopia
73, 17.800, 357.865

Trichromacy



Original Color
73, 16.099, 40.042

Protanomaly
73, 9.963, 64.483

Deuteranomaly
73, 15.052, 45.751

Tritanomaly
73, 16.065, 11.200

Monochromacy



Original Color
73, 16.099, 40.042

Achromatopsia
74, 0.009, 296.813

Achromatomaly
73, 5.575, 36.620

CSS Examples

Text

The CSS property to change the color of the text to CIELCh 73, 16.099, 40.042 is called "color". The color property can be set on classes, ids or directly on the HTML element.

This example shows how text in the color `rgb(209, 171, 161)` looks like.

```
.text, #text, p{  
    color:rgb(209, 171, 161)  
}
```

If you want to add a text shadow in that color use the text-shadow property, you can generate a text shadow directly with our [CSS Text Shadow Generator](#).

Here you see how black text with a 4 pixel rgb(209, 171, 161) colored shadow looks like.

```
.shadow{ text-shadow: 4px 4px 2px rgb(209, 171, 161) }
```

Border

The CSS property to change the border of an element to CIELCh 73, 16.099, 40.042 is called "border". The border property can be set on classes, ids or directly on the HTML element.

This example shows the color as border, it can be applied via the CSS property "border" or "border-color".

```
.border, #border, table{ border:4px solid rgb(209, 171, 161) }
```

If only the border color should be changed use the property `border-color`.

```
.border{ border-color:rgb(209, 171, 161) }
```

If you want to add a box shadow in that color use:

Here you see how a box with a 4 pixel `rgb(209, 171, 161)` colored shadow looks like.

```
.boxshadow{ -moz-box-shadow:4px 4px 4px  
4px rgb(209, 171, 161); -webkit-box-  
shadow:4px 4px 4px 4px rgb(209, 171, 161);  
box-shadow:4px 4px 4px 4px rgb(209, 171,  
161) }
```

Background

The CSS property to change the background color of an element to CIELCh 73, 16.099, 40.042 is called "background". The background property can be set on classes, ids or directly on the HTML element.

```
.background, #background, body{  
background: rgb(209, 171, 161) }
```

If only the background color should be changed can be used:

```
.background{ background-color: rgb(209,  
171, 161) }
```

This example shows the color as background, it is applied via the CSS property "background".

To optimize and compress your CSS code, you can use our [online CSS compressor and optimizer](#) based on csstidy. If you want to create a linear or radial gradient as background or border, check our [CSS Gradient Generator](#).

Hey! You found this booklet interesting? Support Converting Colors with the new Membership Option!

The pro membership hides all ads, plus gives you double the colors in the color bucket, and more awesome pro features!

[Learn more, Memberships starting at \\$2.50/m!](#)

**Follow me
on Twitter!**

@ConvertingColor