

Converting Colors

CIELCh(73, 16.406, 20.814)

Have a look what the booklet for
CIELCh(73, 16.406, 20.814) contains.

CIELCh(73, 16.426, 20.822)	3
<i>Conversions</i>	4
<i>Details</i>	6
<i>Harmonies</i>	11
<i>Previews</i>	20
<i>Color Blindness Simulation</i>	23
<i>CSS Examples</i>	26

Color

CIELCh(73, 16.426, 20.822)

Conversions

Conversions Part 1

Format	Color
Hex	D3A9A9
RGB	211, 169, 169
RGB Percent	83%, 66%, 66%
CMY	0.1720, 0.3367, 0.3367
CMYK	0.00, 0.20, 0.20, 0.17
HSL	0°, 32%, 75%
HSV	0°, 20%, 83%
XYZ	48.2905, 45.1644, 43.7736
YIQ	181.5580, 25.0320, 8.9040

Conversions

Conversions Part 2

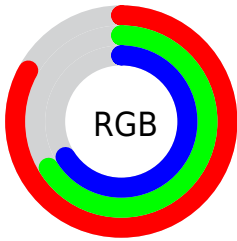
Format	Color
R _Y B	211, 169, 169
Decimal	13871529
CIE Lab	73.00, 15.35, 5.84
CIE LCh	73, 16.426, 20.822
Yxy	45.1644, 0.3519, 0.3291
Android (android.graphics.Color)	4292061609 (0xFFD3A9A9)
YUV	181.5580, -6.1911, 25.8206
Hunter-Lab	67.2044, 10.6554, 8.4246

Details

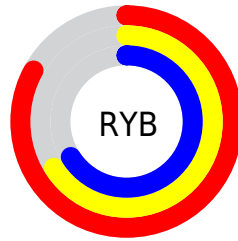
The CIELCh color **73, 16.426, 20.822** is a light color, and the websafe version is hex **CC9999**. A complement of this color would be **82, 14.414, 198.412**, and the grayscale version is **74, 0.009, 296.813**.

A 20% lighter version of the original color is **92, 11.354, 20.158**, and **53, 16.419, 21.278** is the 20% darker color. If you saturate the color by 10%, you get **67, 25.639, 21.903**, and if you desaturate by 10%, it is **79, 7.854, 19.975**.

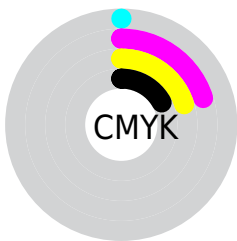
Distribution



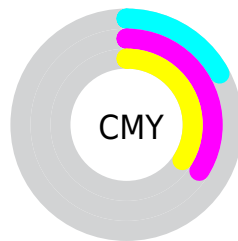
- Red (83%)
- Green (66%)
- Blue (66%)



- Red (83%)
- Yellow (66%)
- Blue (66%)



- Cyan (0%)
- Magenta (20%)
- Yellow (20%)
- Black (17%)



- Cyan (17%)
- Magenta (34%)
- Yellow (34%)


Brightness & Saturation Gradients

These gradients show how the CIELCh color 73, 16.426, 20.822 changes by changing the brightness by 10 percent. The first figure shows a shift by +10% for each color and the second figure -10%.

Similar to the brightness gradients but the following saturation gradients show a change of the CIELCh color 73, 16.426, 20.822 by changing the saturation by 10% instead.

 73, 16.426, 20.822

 73, 16.426, 20.822

 100, 16.426,
20.822

 63, 16.426, 20.822

 93, 16.426, 20.822

 53, 16.426, 20.822

 43, 16.426, 20.822

 33, 16.426, 20.822

 23, 16.426, 20.822

 13, 16.426, 20.822

 3, 16.426, 20.822

 0, 16.426, 20.822

 73, 16.426, 20.822

 73, 16.426, 20.822

67, 25.639, 21.903

79, 7.854, 19.975

62, 35.451, 23.298

85, 0.079, 206.688

57, 45.729, 25.120

91, 7.412, 198.995

53, 56.243, 27.479

97, 14.202,
198.564

49, 66.659, 30.445

97, 14.639,
198.530

47, 76.503, 33.923

45, 84.885, 37.391

44, 90.636, 39.973

44, 90.696, 40.001

Harmonies

Complementary

The Complementary color scheme is a pair of colors which are on the opposite of each other on the color wheel.



73, 16.426, 20.822



82, 14.414, 198.412

Rectangle

The Rectangle color scheme consists of four colors that form a rectangle on the color wheel.



73, 16.426, 20.822



73, 16.426, 70.822



73, 16.426, 200.822



73, 16.426, 250.822

Sweetspot

The Sweet Spot groups the original color and five complimentary colors.



73, 16.424, 20.829



96, 5.467, 19.665



74, 27.297, 325.520



51, 3.636, 19.721



0, 0.000, 0.000



53, 0.007, 296.813

Same Dimension

The Same Dimension uses a secret algorithm to generate beautiful new colors.



73, 16.424, 20.829



84, 23.485, 21.265



78, 13.921, 72.950



41, 4.459, 19.936



35, 76.454, 39.865



4, 20.017, 19.472

Inverse Universe

The Inverse Universe completely reimagines the original color for something new.



82, 14.414, 198.412



96, 19.971, 198.199



76, 13.211, 258.282



43, 4.203, 198.985



62, 36.707, 196.403



14, 14.037, 196.399

Previews

White Background



This preview shows how the CIELCh color 73, 16.426, 20.822 looks on a white background.

Color Contrast Check

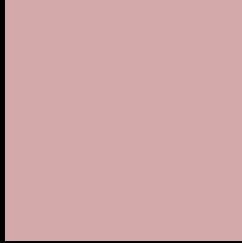
Large Text (above 18pt) WCAG AA × Fail

Any Text WCAG AA × Fail

Large Text (above 18pt) WCAG AAA × Fail

Any Text WCAG AAA × Fail

Black Background



This preview shows how the CIELCh color 73, 16.426, 20.822 looks on a black background.

Color Contrast Check

Large Text (above 18pt) WCAG AA ✓ Pass

Any Text WCAG AA ✓ Pass

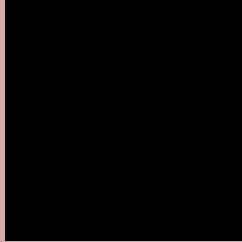
Large Text (above 18pt) WCAG AAA ✓ Pass

Any Text WCAG AAA ✓ Pass

If you want to check with other color combinations, try the [Color Contrast Checker](#).

CIELCh 73, 16.426, 20.822

Background



This preview shows how black text looks on a background with the CIELCh color 73, 16.426, 20.822.



This preview shows how white text looks on a background with the CIELCh color 73, 16.426, 20.822.

Color Blindness Simulation

Color vision deficiency is a very complex topic, and I could not describe the different causes any better than Wikipedia does, so if you want to learn more, you should check out their [article about color blindness](#).

Dichromacy



Original Color

73, 16.426, 20.822

Protanopia

73, 3.284, 74.664

Deuteranopia

73, 11.249, 34.091



Tritanopia
73, 18.534, 358.912

Trichromacy



Original Color
73, 16.426, 20.822

Protanomaly
73, 7.474, 32.438

Deuteranomaly
73, 13.085, 29.899

Tritanomaly
73, 17.470, 6.732

Monochromacy



Original Color
73, 16.426, 20.822

Achromatopsia
74, 0.009, 296.813

Achromatomaly
74, 6.077, 19.835

CSS Examples

Text

The CSS property to change the color of the text to CIELCh 73, 16.426, 20.822 is called "color". The color property can be set on classes, ids or directly on the HTML element.

This example shows how text in the color `rgb(211, 169, 169)` looks like.

```
.text, #text, p{  
    color:rgb(211, 169, 169)  
}
```

If you want to add a text shadow in that color use the text-shadow property, you can generate a text shadow directly with our [CSS Text Shadow Generator](#).

Here you see how black text with a 4 pixel rgb(211, 169, 169) colored shadow looks like.

```
.shadow{ text-shadow: 4px 4px 2px rgb(211, 169, 169) }
```

Border

The CSS property to change the border of an element to CIELCh 73, 16.426, 20.822 is called "border". The border property can be set on classes, ids or directly on the HTML element.

This example shows the color as border, it can be applied via the CSS property "border" or "border-color".

```
.border, #border, table{ border:4px solid rgb(211, 169, 169) }
```

If only the border color should be changed use the property `border-color`.

```
.border{ border-color:rgb(211, 169, 169) }
```

If you want to add a box shadow in that color use:

Here you see how a box with a 4 pixel `rgb(211, 169, 169)` colored shadow looks like.

```
.boxshadow{ -moz-box-shadow:4px 4px 4px  
4px rgb(211, 169, 169); -webkit-box-  
shadow:4px 4px 4px 4px rgb(211, 169, 169);  
box-shadow:4px 4px 4px 4px rgb(211, 169,  
169) }
```

Background

The CSS property to change the background color of an element to CIELCh 73, 16.426, 20.822 is called "background". The background property can be set on classes, ids or directly on the HTML element.

```
.background, #background, body{  
background: rgb(211, 169, 169) }
```

If only the background color should be changed can be used:

```
.background{ background-color: rgb(211,  
169, 169) }
```

This example shows the color as background, it is applied via the CSS property "background".

To optimize and compress your CSS code, you can use our [online CSS compressor and optimizer](#) based on csstidy. If you want to create a linear or radial gradient as background or border, check our [CSS Gradient Generator](#).

Hey! You found this booklet interesting? Support Converting Colors with the new Membership Option!

The pro membership hides all ads, plus gives you double the colors in the color bucket, and more awesome pro features!

[Learn more, Memberships starting at \\$2.50/m!](#)

**Follow me
on Twitter!**

@ConvertingColor