

Converting Colors

CIELCh(73, 17.641, 29.528)

Have a look what the booklet for
CIELCh(73, 17.641, 29.528) contains.

CIELCh(73, 17.655, 29.587)	3
<i>Conversions</i>	4
<i>Details</i>	6
<i>Harmonies</i>	11
<i>Previews</i>	20
<i>Color Blindness Simulation</i>	23
<i>CSS Examples</i>	26

Color

CIELCh(73, 17.655, 29.587)

Conversions

Conversions Part 1

Format	Color
Hex	D5A9A4
RGB	213, 169, 164
RGB Percent	84%, 66%, 64%
CMY	0.1650, 0.3375, 0.3571
CMYK	0.00, 0.21, 0.23, 0.16
HSL	6°, 37%, 74%
HSV	6°, 23%, 84%
XYZ	48.2904, 45.1644, 41.2626
YIQ	181.5860, 27.8290, 7.7730

Conversions

Conversions Part 2

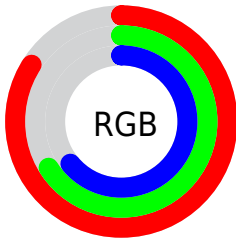
Format	Color
RYB	213, 170, 164
Decimal	14002596
CIELab	73.00, 15.35, 8.72
CIElCh	73, 17.655, 29.587
Yxy	45.1644, 0.3585, 0.3353
Android (android.graphics.Color)	4292192676 (0xFFD5A9A4)
YUV	181.5860, -8.6699, 27.5501
Hunter-Lab	67.2044, 10.6551, 10.6399

Details

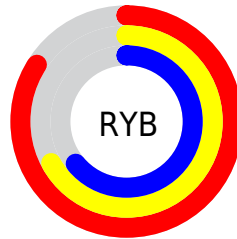
The CIELCh color **73, 17.655, 29.587** is a light color, and the websafe version is hex **CC9999**. A complement of this color would be **81, 15.063, 208.625**, and the grayscale version is **74, 0.009, 296.813**.

A 20% lighter version of the original color is **92, 11.741, 32.767**, and **53, 17.825, 30.509** is the 20% darker color. If you saturate the color by 10%, you get **68, 26.388, 30.254**, and if you desaturate by 10%, it is **78, 9.576, 29.120**.

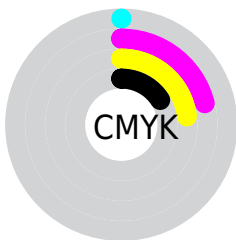
Distribution



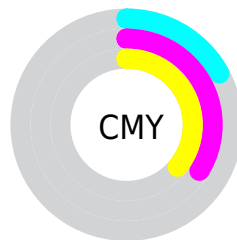
- Red (84%)
- Green (66%)
- Blue (64%)



- Red (84%)
- Yellow (67%)
- Blue (64%)



- Cyan (0%)
- Magenta (21%)
- Yellow (23%)
- Black (16%)



- Cyan (17%)
- Magenta (34%)
- Yellow (36%)

Brightness & Saturation Gradients

These gradients show how the CIELCh color 73, 17.655, 29.587 changes by changing the brightness by 10 percent. The first figure shows a shift by +10% for each color and the second figure -10%.

Similar to the brightness gradients but the following saturation gradients show a change of the CIELCh color 73, 17.655, 29.587 by changing the saturation by 10% instead.

■ 73, 17.655, 29.587

■ 73, 17.655, 29.587

■ 100, 17.655,
29.587

■ 63, 17.655, 29.587

■ 93, 17.655, 29.587

■ 53, 17.655, 29.587

■ 43, 17.655, 29.587

■ 33, 17.655, 29.587

■ 23, 17.655, 29.587

■ 13, 17.655, 29.587

■ 3, 17.655, 29.587

■ 0, 17.655, 29.587

■ 73, 17.655, 29.587

■ 73, 17.655, 29.587

68, 26.388, 30.254

78, 9.576, 29.120

63, 35.770, 31.169

84, 2.126, 28.614

59, 45.735, 32.409

89, 4.744, 208.833

54, 56.129, 34.029

95, 11.091,
208.672

51, 66.667, 36.029

97, 14.072,
198.567

48, 76.797, 38.244

46, 85.314, 40.111

45, 89.717, 41.079

Harmonies

Complementary

The Complementary color scheme is a pair of colors which are on the opposite of each other on the color wheel.



73, 17.655, 29.587



81, 15.063, 208.625

Rectangle

The Rectangle color scheme consists of four colors that form a rectangle on the color wheel.



73, 17.655, 29.587



73, 17.655, 79.587



73, 17.655, 209.587



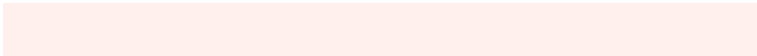
73, 17.655, 259.587

Sweetspot

The Sweet Spot groups the original color and five complimentary colors.



73, 17.653, 29.595



96, 5.819, 28.876



73, 29.705, 328.602



51, 3.791, 28.903



0, 0.000, 0.000



53, 0.007, 296.813

Same Dimension

The Same Dimension uses a secret algorithm to generate beautiful new colors.



73, 17.653, 29.595



83, 25.413, 29.915



79, 17.474, 82.430



42, 4.136, 28.975



36, 75.841, 41.262



6, 20.607, 24.997

Inverse Universe

The Inverse Universe completely reimagines the original color for something new.



81, 15.063, 208.625



94, 20.811, 208.644



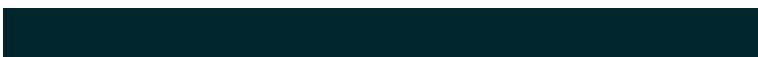
74, 17.035, 268.870



44, 3.891, 208.756



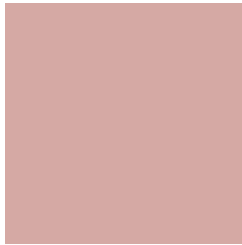
58, 33.024, 214.503



13, 13.153, 210.837

Previews

White Background



This preview shows how the CIELCh color 73, 17.655, 29.587 looks on a white background.

Color Contrast Check

Large Text (above 18pt) WCAG AA × Fail

Any Text WCAG AA × Fail

Large Text (above 18pt) WCAG AAA × Fail

Any Text WCAG AAA × Fail

Black Background



This preview shows how the CIE LCh color 73, 17.655, 29.587 looks on a black background.

Color Contrast Check

Large Text (above 18pt) WCAG AA ✓ Pass

Any Text WCAG AA ✓ Pass

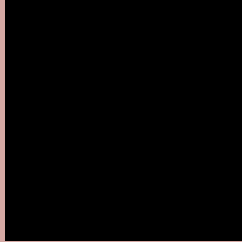
Large Text (above 18pt) WCAG AAA ✓ Pass

Any Text WCAG AAA ✓ Pass

If you want to check with other color combinations, try the [Color Contrast Checker](#).

CIELCh 73, 17.655, 29.587

Background



This preview shows how black text looks on a background with the CIELCh color 73, 17.655, 29.587.



This preview shows how white text looks on a background with the CIELCh color 73, 17.655, 29.587.

Color Blindness Simulation

Color vision deficiency is a very complex topic, and I could not describe the different causes any better than Wikipedia does, so if you want to learn more, you should check out their [article about color blindness](#).

Dichromacy



Original Color

73, 17.655, 29.587

Protanopia

73, 5.860, 86.529

Deuteranopia

73, 13.041, 44.619



Tritanopia
73, 19.468, 1.845

Trichromacy



Original Color
73, 17.655, 29.587

Protanomaly
73, 8.899, 48.916

Deuteranomaly
73, 14.710, 39.644

Tritanomaly
73, 18.089, 10.776

Monochromacy



Original Color
73, 17.655, 29.587

Achromatopsia
74, 0.009, 296.813

Achromatomaly
73, 6.193, 29.848

CSS Examples

Text

The CSS property to change the color of the text to CIELCh 73, 17.655, 29.587 is called "color". The color property can be set on classes, ids or directly on the HTML element.

This example shows how text in the color `rgb(213, 169, 164)` looks like.

```
.text, #text, p{  
    color:rgb(213, 169, 164)  
}
```

If you want to add a text shadow in that color use the text-shadow property, you can generate a text shadow directly with our [CSS Text Shadow Generator](#).

Here you see how black text with a 4 pixel rgb(213, 169, 164) colored shadow looks like.

```
.shadow{ text-shadow: 4px 4px 2px rgb(213, 169, 164) }
```

Border

The CSS property to change the border of an element to CIELCh 73, 17.655, 29.587 is called "border". The border property can be set on classes, ids or directly on the HTML element.

This example shows the color as border, it can be applied via the CSS property "border" or "border-color".

```
.border, #border, table{ border:4px solid rgb(213, 169, 164) }
```

If only the border color should be changed use the property border-color.

```
.border{ border-color:rgb(213, 169, 164) }
```

If you want to add a box shadow in that color use:

Here you see how a box with a 4 pixel rgb(213, 169, 164) colored shadow looks like.

```
.boxshadow{ -moz-box-shadow:4px 4px 4px  
4px rgb(213, 169, 164); -webkit-box-  
shadow:4px 4px 4px 4px rgb(213, 169, 164);  
box-shadow:4px 4px 4px 4px rgb(213, 169,  
164) }
```

Background

The CSS property to change the background color of an element to CIELCh 73, 17.655, 29.587 is called "background". The background property can be set on classes, ids or directly on the HTML element.

```
.background, #background, body{  
background: rgb(213, 169, 164) }
```

If only the background color should be changed can be used:

```
.background{ background-color: rgb(213,  
169, 164) }
```

This example shows the color as background, it is applied via the CSS property "background".

To optimize and compress your CSS code, you can use our [online CSS compressor and optimizer](#) based on csstidy. If you want to create a linear or radial gradient as background or border, check our [CSS Gradient Generator](#).

Hey! You found this booklet interesting? Support Converting Colors with the new Membership Option!

The pro membership hides all ads, plus gives you double the colors in the color bucket, and more awesome pro features!

[Learn more, Memberships starting at \\$2.50/m!](#)

**Follow me
on Twitter!**

@ConvertingColor