

Converting Colors

CIELCh(73, 18.052, 50.056)

Have a look what the booklet for
CIELCh(73, 18.052, 50.056) contains.

CIELCh(73, 18.034, 48.943)	3
<i>Conversions</i>	4
<i>Details</i>	6
<i>Harmonies</i>	11
<i>Previews</i>	20
<i>Color Blindness Simulation</i>	23
<i>CSS Examples</i>	26

Color

CIELCh(73, 18.034, 48.943)

Conversions

Conversions Part 1

Format	Color
Hex	D2AB9B
RGB	210, 171, 155
RGB Percent	82%, 67%, 61%
CMY	0.1767, 0.3296, 0.3924
CMYK	0.00, 0.19, 0.26, 0.18
HSL	17°, 38%, 72%
HSV	17°, 26%, 82%
XYZ	47.0278, 45.1644, 37.2267
YIQ	180.8370, 28.3800, 3.2920

Conversions

Conversions Part 2

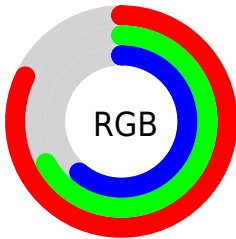
Format	Color
R _Y B	210, 178, 155
Decimal	13806491
CIE Lab	73.00, 11.84, 13.60
CIE LCh	73, 18.034, 48.943
Yxy	45.1644, 0.3634, 0.3490
Android (android.graphics.Color)	4291996571 (0xFFD2AB9B)
YUV	180.8370, -12.7376, 25.5760
Hunter-Lab	67.2044, 7.3015, 14.2005

Details

The CIELCh color **73, 18.034, 48.943** is a light color, and the websafe version is hex **CC9999**. A complement of this color would be **76, 15.399, 232.806**, and the grayscale version is **74, 0.009, 296.813**.

A 20% lighter version of the original color is **92, 14.010, 58.484**, and **53, 18.097, 49.038** is the 20% darker color. If you saturate the color by 10%, you get **69, 25.920, 48.552**, and if you desaturate by 10%, it is **77, 10.723, 49.435**.

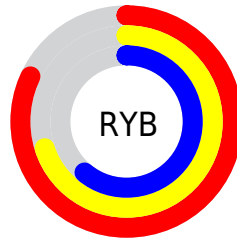
Distribution



Red (82%)

Green (67%)

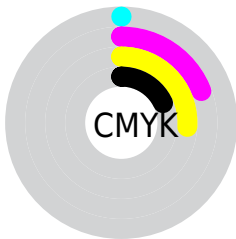
Blue (61%)



Red (82%)

Yellow (70%)

Blue (61%)

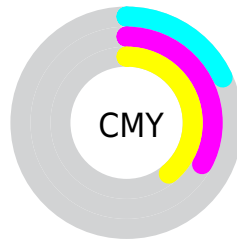


Cyan (0%)

Magenta (19%)

Yellow (26%)

Black (18%)



Cyan (18%)

Magenta (33%)

Yellow (39%)

Brightness & Saturation Gradients

These gradients show how the CIELCh color 73, 18.034, 48.943 changes by changing the brightness by 10 percent. The first figure shows a shift by +10% for each color and the second figure -10%.

Similar to the brightness gradients but the following saturation gradients show a change of the CIELCh color 73, 18.034, 48.943 by changing the saturation by 10% instead.

73, 18.034, 48.943

73, 18.034, 48.943

100, 18.034,
48.943

63, 18.034, 48.943

93, 18.034, 48.943

53, 18.034, 48.943

43, 18.034, 48.943

33, 18.034, 48.943

23, 18.034, 48.943

13, 18.034, 48.943

3, 18.034, 48.943

0, 18.034, 48.943

73, 18.034, 48.943

73, 18.034, 48.943

69, 25.920, 48.552

77, 10.723, 49.435

65, 34.406, 48.265

81, 3.948, 49.926

61, 43.472, 48.108

86, 2.345, 230.913

58, 53.017, 48.069

90, 8.206, 231.413

54, 62.766, 48.072

95, 12.665,
221.849

52, 72.084, 47.889

97, 15.016,
198.506

49, 79.717, 47.031

48, 82.306, 46.724

Harmonies

Complementary

The Complementary color scheme is a pair of colors which are on the opposite of each other on the color wheel.



73, 18.034, 48.943



76, 15.399, 232.806

Rectangle

The Rectangle color scheme consists of four colors that form a rectangle on the color wheel.



73, 18.034, 48.943



73, 18.034, 98.943



73, 18.034, 228.943



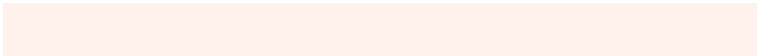
73, 18.034, 278.943

Sweetspot

The Sweet Spot groups the original color and five complimentary colors.



73, 18.033, 48.952



96, 6.013, 49.845



70, 29.442, 335.451



51, 4.298, 49.772



0, 0.000, 0.000



53, 0.007, 296.813

Same Dimension

The Same Dimension uses a secret algorithm to generate beautiful new colors.



73, 18.033, 48.952



85, 25.500, 48.733



80, 23.273, 96.295



42, 3.648, 49.782



39, 69.416, 47.229



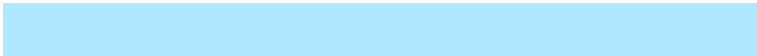
7, 16.938, 36.600

Inverse Universe

The Inverse Universe completely reimagines the original color for something new.



76, 15.399, 232.806



89, 21.011, 233.465



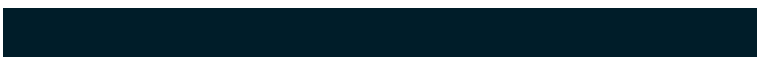
69, 23.886, 283.016



42, 3.466, 231.200



47, 35.270, 254.033



9, 12.597, 242.680

Previews

White Background



This preview shows how the CIELCh color 73, 18.034, 48.943 looks on a white background.

Color Contrast Check

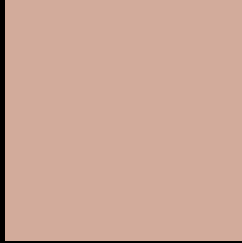
Large Text (above 18pt) WCAG AA × Fail

Any Text WCAG AA × Fail

Large Text (above 18pt) WCAG AAA × Fail

Any Text WCAG AAA × Fail

Black Background



This preview shows how the CIELCh color 73, 18.034, 48.943 looks on a black background.

Color Contrast Check

Large Text (above 18pt) WCAG AA ✓ Pass

Any Text WCAG AA ✓ Pass

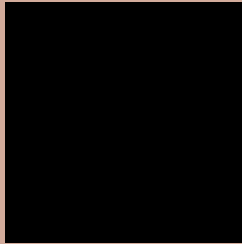
Large Text (above 18pt) WCAG AAA ✓ Pass

Any Text WCAG AAA ✓ Pass

If you want to check with other color combinations, try the [Color Contrast Checker](#).

CIELCh 73, 18.034, 48.943

Background



This preview shows how black text looks on a background with the CIELCh color 73, 18.034, 48.943.

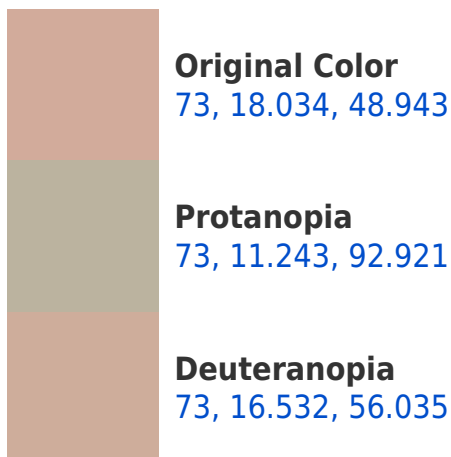


This preview shows how white text looks on a background with the CIELCh color 73, 18.034, 48.943.

Color Blindness Simulation

Color vision deficiency is a very complex topic, and I could not describe the different causes any better than Wikipedia does, so if you want to learn more, you should check out their [article about color blindness](#).

Dichromacy





Tritanopia
73, 18.893, 359.404

Trichromacy



Original Color
73, 18.034, 48.943

Protanomaly
73, 12.323, 71.632

Deuteranomaly
73, 16.898, 53.050

Tritanomaly
73, 17.201, 15.555

Monochromacy



Original Color
73, 18.034, 48.943

Achromatopsia
74, 0.009, 296.813

Achromatomaly
73, 6.347, 44.902

CSS Examples

Text

The CSS property to change the color of the text to CIELCh 73, 18.034, 48.943 is called "color". The color property can be set on classes, ids or directly on the HTML element.

This example shows how text in the color `rgb(210, 171, 155)` looks like.

```
.text, #text, p{  
    color:rgb(210, 171, 155)  
}
```

If you want to add a text shadow in that color use the text-shadow property, you can generate a text shadow directly with our [CSS Text Shadow Generator](#).

Here you see how black text with a 4 pixel rgb(210, 171, 155) colored shadow looks like.

```
.shadow{ text-shadow: 4px 4px 2px rgb(210, 171, 155) }
```

Border

The CSS property to change the border of an element to CIELCh 73, 18.034, 48.943 is called "border". The border property can be set on classes, ids or directly on the HTML element.

This example shows the color as border, it can be applied via the CSS property "border" or "border-color".

```
.border, #border, table{ border:4px solid rgb(210, 171, 155) }
```

If only the border color should be changed use the property border-color.

```
.border{ border-color:rgb(210, 171, 155) }
```

If you want to add a box shadow in that color use:

Here you see how a box with a 4 pixel rgb(210, 171, 155) colored shadow looks like.

```
.boxshadow{ -moz-box-shadow:4px 4px 4px  
4px rgb(210, 171, 155); -webkit-box-  
shadow:4px 4px 4px 4px rgb(210, 171, 155);  
box-shadow:4px 4px 4px 4px rgb(210, 171,  
155) }
```

Background

The CSS property to change the background color of an element to CIELCh 73, 18.034, 48.943 is called "background". The background property can be set on classes, ids or directly on the HTML element.

```
.background, #background, body{  
background: rgb(210, 171, 155) }
```

If only the background color should be changed can be used:

```
.background{ background-color: rgb(210,  
171, 155) }
```

This example shows the color as background, it is applied via the CSS property "background".

To optimize and compress your CSS code, you can use our [online CSS compressor and optimizer](#) based on csstidy. If you want to create a linear or radial gradient as background or border, check our [CSS Gradient Generator](#).

Hey! You found this booklet interesting? Support Converting Colors with the new Membership Option!

The pro membership hides all ads, plus gives you double the colors in the color bucket, and more awesome pro features!

[Learn more, Memberships starting at \\$2.50/m!](#)

**Follow me
on Twitter!**

@ConvertingColor