

Converting Colors

CIELCh(73, 18.162, 14.005)

Have a look what the booklet for
CIELCh(73, 18.162, 14.005) contains.

CIELCh(73, 18.010, 14.167)	3
<i>Conversions</i>	4
<i>Details</i>	6
<i>Harmonies</i>	11
<i>Previews</i>	20
<i>Color Blindness Simulation</i>	23
<i>CSS Examples</i>	26

Color

CIELCh(73, 18.010, 14.167)

Conversions

Conversions Part 1

Format	Color
Hex	D6A8AC
RGB	214, 168, 172
RGB Percent	84%, 66%, 67%
CMY	0.1616, 0.3420, 0.3263
CMYK	0.00, 0.22, 0.20, 0.16
HSL	355°, 36%, 75%
HSV	355°, 22%, 84%
XYZ	49.0604, 45.1644, 45.0590
YIQ	182.2100, 26.1320, 10.9960

Conversions

Conversions Part 2

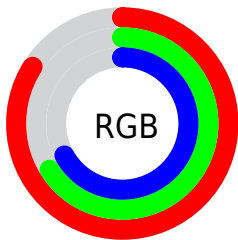
Format	Color
R_{YB}	214, 168, 172
Decimal	14067884
CIE Lab	73.00, 17.46, 4.41
CIE LCh	73, 18.010, 14.167
Yxy	45.1644, 0.3522, 0.3243
Android (android.graphics.Color)	4292257964 (0xFFD6A8AC)
YUV	182.2100, -5.0335, 27.8798
Hunter-Lab	67.2044, 12.7002, 7.2906

Details

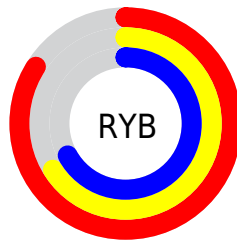
The CIELCh color **73, 18.010, 14.167** is a light color, and the websafe version is hex **CC9999**. A complement of this color would be **82, 15.995, 190.642**, and the grayscale version is **74, 0.009, 296.813**.

A 20% lighter version of the original color is **91, 11.843, 10.213**, and **53, 18.078, 14.304** is the 20% darker color. If you saturate the color by 10%, you get **67, 27.213, 15.462**, and if you desaturate by 10%, it is **79, 9.321, 13.115**.

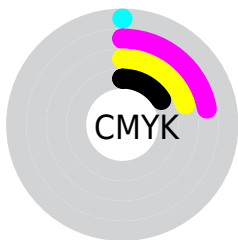
Distribution



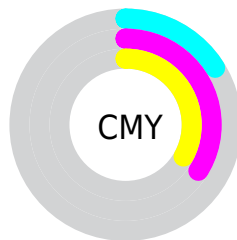
- Red (84%)
- Green (66%)
- Blue (67%)



- Red (84%)
- Yellow (66%)
- Blue (67%)



- Cyan (0%)
- Magenta (22%)
- Yellow (20%)
- Black (16%)



- Cyan (16%)
- Magenta (34%)
- Yellow (33%)


Brightness & Saturation Gradients

These gradients show how the CIELCh color 73, 18.010, 14.167 changes by changing the brightness by 10 percent. The first figure shows a shift by +10% for each color and the second figure -10%.

Similar to the brightness gradients but the following saturation gradients show a change of the CIELCh color 73, 18.010, 14.167 by changing the saturation by 10% instead.

 73, 18.010, 14.167

 73, 18.010, 14.167

 100, 18.010,
14.167

 63, 18.010, 14.167

 93, 18.010, 14.167

 53, 18.010, 14.167

 43, 18.010, 14.167

 33, 18.010, 14.167

 23, 18.010, 14.167

 13, 18.010, 14.167

 3, 18.010, 14.167

 0, 18.010, 14.167

 73, 18.010, 14.167

 73, 18.010, 14.167

67, 27.213, 15.462

79, 9.321, 13.115

62, 36.843, 17.079

85, 1.183, 11.856

57, 46.717, 19.137

91, 6.417, 191.723

53, 56.563, 21.765

97, 13.514,
191.086

50, 66.047, 25.077

97, 13.800,
198.585

47, 74.837, 29.086

45, 82.567, 33.518

45, 87.913, 36.895

Harmonies

Complementary

The Complementary color scheme is a pair of colors which are on the opposite of each other on the color wheel.



73, 18.010, 14.167



82, 15.995, 190.642

Rectangle

The Rectangle color scheme consists of four colors that form a rectangle on the color wheel.



73, 18.010, 14.167



73, 18.010, 64.167



73, 18.010, 194.167



73, 18.010, 244.167

Sweetspot

The Sweet Spot groups the original color and five complimentary colors.



73, 18.008, 14.173



96, 5.505, 12.580



74, 28.986, 322.751



51, 3.659, 12.647



0, 0.000, 0.000



53, 0.007, 296.813

Same Dimension

The Same Dimension uses a secret algorithm to generate beautiful new colors.



73, 18.008, 14.173



83, 25.498, 14.751



77, 14.698, 61.696



42, 4.571, 12.911



35, 73.800, 36.238



5, 21.965, 15.891

Inverse Universe

The Inverse Universe completely reimagines the original color for something new.



73, 18.008, 14.173



83, 25.498, 14.751



77, 13.386, 246.636



42, 4.571, 12.911



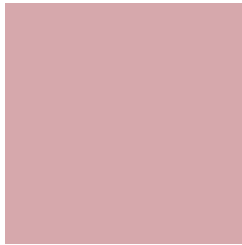
35, 73.800, 36.238



5, 21.965, 15.891

Previews

White Background



This preview shows how the CIELCh color 73, 18.010, 14.167 looks on a white background.

Color Contrast Check

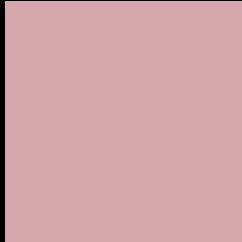
Large Text (above 18pt) WCAG AA × Fail

Any Text WCAG AA × Fail

Large Text (above 18pt) WCAG AAA × Fail

Any Text WCAG AAA × Fail

Black Background



This preview shows how the CIELCh color 73, 18.010, 14.167 looks on a black background.

Color Contrast Check

Large Text (above 18pt) WCAG AA ✓ Pass

Any Text WCAG AA ✓ Pass

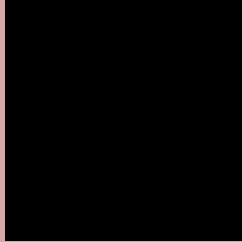
Large Text (above 18pt) WCAG AAA ✓ Pass

Any Text WCAG AAA ✓ Pass

If you want to check with other color combinations, try the [Color Contrast Checker](#).

CIELCh 73, 18.010, 14.167

Background



This preview shows how black text looks on a background with the CIELCh color 73, 18.010, 14.167.



This preview shows how white text looks on a background with the CIELCh color 73, 18.010, 14.167.

Color Blindness Simulation

Color vision deficiency is a very complex topic, and I could not describe the different causes any better than Wikipedia does, so if you want to learn more, you should check out their [article about color blindness](#).

Dichromacy



Original Color

73, 18.010, 14.167

Protanopia

73, 1.588, 39.102

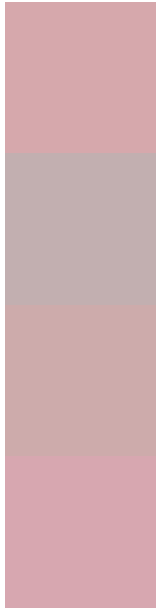
Deuteranopia

73, 10.502, 26.125



Tritanopia
73, 19.468, 1.845

Trichromacy



Original Color
73, 18.010, 14.167

Protanomaly
73, 7.260, 15.698

Deuteranomaly
73, 13.195, 20.517

Tritanomaly
73, 19.110, 6.498

Monochromacy



Original Color
73, 18.010, 14.167

Achromatopsia
74, 0.009, 296.813

Achromatomaly
74, 6.475, 15.104

CSS Examples

Text

The CSS property to change the color of the text to CIELCh 73, 18.010, 14.167 is called "color". The color property can be set on classes, ids or directly on the HTML element.

This example shows how text in the color `rgb(214, 168, 172)` looks like.

```
.text, #text, p{  
    color:rgb(214, 168, 172)  
}
```

If you want to add a text shadow in that color use the text-shadow property, you can generate a text shadow directly with our [CSS Text Shadow Generator](#).

Here you see how black text with a 4 pixel rgb(214, 168, 172) colored shadow looks like.

```
.shadow{ text-shadow: 4px 4px 2px rgb(214, 168, 172) }
```

Border

The CSS property to change the border of an element to CIELCh 73, 18.010, 14.167 is called "border". The border property can be set on classes, ids or directly on the HTML element.

This example shows the color as border, it can be applied via the CSS property "border" or "border-color".

```
.border, #border, table{ border:4px solid rgb(214, 168, 172) }
```

If only the border color should be changed use the property `border-color`.

```
.border{ border-color:rgb(214, 168, 172) }
```

If you want to add a box shadow in that color use:

Here you see how a box with a 4 pixel `rgb(214, 168, 172)` colored shadow looks like.

```
.boxshadow{ -moz-box-shadow:4px 4px 4px  
4px rgb(214, 168, 172); -webkit-box-  
shadow:4px 4px 4px 4px rgb(214, 168, 172);  
box-shadow:4px 4px 4px 4px rgb(214, 168,  
172) }
```

Background

The CSS property to change the background color of an element to CIELCh 73, 18.010, 14.167 is called "background". The background property can be set on classes, ids or directly on the HTML element.

```
.background, #background, body{  
background: rgb(214, 168, 172) }
```

If only the background color should be changed can be used:

```
.background{ background-color: rgb(214,  
168, 172) }
```

This example shows the color as background, it is applied via the CSS property "background".

To optimize and compress your CSS code, you can use our [online CSS compressor and optimizer](#) based on csstidy. If you want to create a linear or radial gradient as background or border, check our [CSS Gradient Generator](#).

Hey! You found this booklet interesting? Support Converting Colors with the new Membership Option!

The pro membership hides all ads, plus gives you double the colors in the color bucket, and more awesome pro features!

[Learn more, Memberships starting at \\$2.50/m!](#)

**Follow me
on Twitter!**

@ConvertingColor