

Converting Colors

CIELCh(73, 19.591, 16.447)

Have a look what the booklet for
CIELCh(73, 19.591, 16.447) contains.

CIELCh(73, 19.614, 16.458)	3
<i>Conversions</i>	4
<i>Details</i>	6
<i>Harmonies</i>	11
<i>Previews</i>	20
<i>Color Blindness Simulation</i>	23
<i>CSS Examples</i>	26

Color

CIELCh(73, 19.614, 16.458)

Conversions

Conversions Part 1

Format	Color
Hex	D9A7AA
RGB	217, 167, 170
RGB Percent	85%, 65%, 67%
CMY	0.1500, 0.3460, 0.3342
CMYK	0.00, 0.23, 0.22, 0.15
HSL	356°, 40%, 75%
HSV	356°, 23%, 85%
XYZ	49.5568, 45.1644, 44.0249
YIQ	182.2920, 28.8370, 11.5330

Conversions

Conversions Part 2

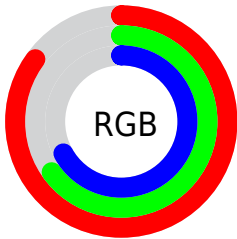
Format	Color
R _Y B	217, 167, 170
Decimal	14264234
CIE Lab	73.00, 18.81, 5.56
CIE LCh	73, 19.614, 16.458
Yxy	45.1644, 0.3572, 0.3255
Android (android.graphics.Color)	4292454314 (0xFFD9A7AA)
YUV	182.2920, -6.0600, 30.4389
Hunter-Lab	67.2044, 14.0186, 8.2029

Details

The CIELCh color **73, 19.614, 16.458** is a light color, and the websafe version is hex **CC9999**. A complement of this color would be **83, 17.117, 192.879**, and the grayscale version is **74, 0.009, 296.813**.

A 20% lighter version of the original color is **91, 12.162, 12.951**, and **53, 19.390, 16.656** is the 20% darker color. If you saturate the color by 10%, you get **67, 29.056, 17.757**, and if you desaturate by 10%, it is **79, 10.725, 15.420**.

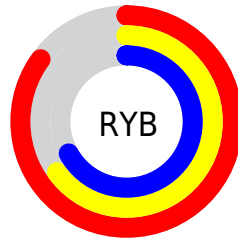
Distribution



Red (85%)

Green (65%)

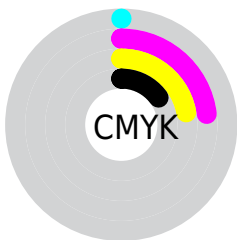
Blue (67%)



Red (85%)

Yellow (65%)

Blue (67%)

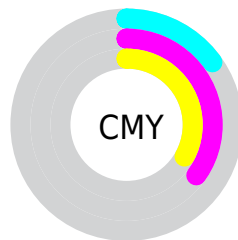


Cyan (0%)

Magenta (23%)

Yellow (22%)

Black (15%)



Cyan (15%)

Magenta (35%)

Yellow (33%)

Brightness & Saturation Gradients

These gradients show how the CIELCh color 73, 19.614, 16.458 changes by changing the brightness by 10 percent. The first figure shows a shift by +10% for each color and the second figure -10%.

Similar to the brightness gradients but the following saturation gradients show a change of the CIELCh color 73, 19.614, 16.458 by changing the saturation by 10% instead.

73, 19.614, 16.458

73, 19.614, 16.458

100, 19.614,
16.458

63, 19.614, 16.458

93, 19.614, 16.458

53, 19.614, 16.458

43, 19.614, 16.458

33, 19.614, 16.458

23, 19.614, 16.458

13, 19.614, 16.458

3, 19.614, 16.458

0, 19.614, 16.458

73, 19.614, 16.458

73, 19.614, 16.458

67, 29.056, 17.757

79, 10.725, 15.420

62, 38.959, 19.401

85, 2.425, 14.416

57, 49.135, 21.508

91, 5.303, 194.092

53, 59.304, 24.204

97, 12.497,
193.472

50, 69.121, 27.576

97, 12.847,
198.648

47, 78.202, 31.561

46, 85.967, 35.711

45, 90.093, 38.022

Harmonies

Complementary

The Complementary color scheme is a pair of colors which are on the opposite of each other on the color wheel.



73, 19.614, 16.458



83, 17.117, 192.879

Rectangle

The Rectangle color scheme consists of four colors that form a rectangle on the color wheel.



73, 19.614, 16.458



73, 19.614, 66.458



73, 19.614, 196.458



73, 19.614, 246.458

Sweetspot

The Sweet Spot groups the original color and five complimentary colors.



73, 19.612, 16.464



95, 6.421, 14.860



74, 31.725, 323.798



50, 4.181, 14.918



0, 0.000, 0.000



53, 0.007, 296.813

Same Dimension

The Same Dimension uses a secret algorithm to generate beautiful new colors.



73, 19.612, 16.464



81, 27.648, 17.099



78, 16.144, 65.303



43, 4.647, 15.082



36, 75.754, 37.481



5, 23.759, 17.684

Inverse Universe

The Inverse Universe completely reimagines the original color for something new.



73, 19.612, 16.464



81, 27.648, 17.099



77, 14.781, 251.050



43, 4.647, 15.082



36, 75.754, 37.481



5, 23.759, 17.684

Previews

White Background



This preview shows how the CIELCh color 73, 19.614, 16.458 looks on a white background.

Color Contrast Check

Large Text (above 18pt) WCAG AA × Fail

Any Text WCAG AA × Fail

Large Text (above 18pt) WCAG AAA × Fail

Any Text WCAG AAA × Fail

Black Background



This preview shows how the CIELCh color 73, 19.614, 16.458 looks on a black background.

Color Contrast Check

Large Text (above 18pt) WCAG AA ✓ Pass

Any Text WCAG AA ✓ Pass

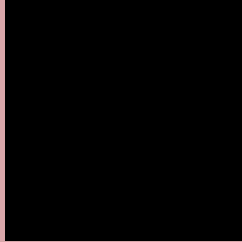
Large Text (above 18pt) WCAG AAA ✓ Pass

Any Text WCAG AAA ✓ Pass

If you want to check with other color combinations, try the [Color Contrast Checker](#).

CIELCh 73, 19.614, 16.458

Background



This preview shows how black text looks on a background with the CIELCh color 73, 19.614, 16.458.

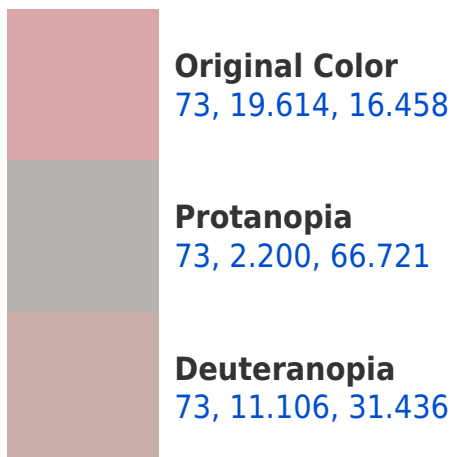


This preview shows how white text looks on a background with the CIELCh color 73, 19.614, 16.458.

Color Blindness Simulation

Color vision deficiency is a very complex topic, and I could not describe the different causes any better than Wikipedia does, so if you want to learn more, you should check out their [article about color blindness](#).

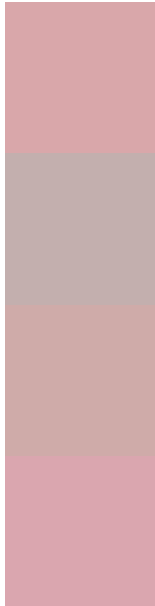
Dichromacy





Tritanopia
73, 21.492, 2.448

Trichromacy



Original Color
73, 19.614, 16.458

Protanomaly
73, 7.675, 24.013

Deuteranomaly
73, 14.099, 24.944

Tritanomaly
73, 20.662, 7.793

Monochromacy



Original Color
73, 19.614, 16.458

Achromatopsia
74, 0.009, 296.813

Achromatomaly
73, 7.299, 11.470

CSS Examples

Text

The CSS property to change the color of the text to CIELCh 73, 19.614, 16.458 is called "color". The color property can be set on classes, ids or directly on the HTML element.

This example shows how text in the color `rgb(217, 167, 170)` looks like.

```
.text, #text, p{  
    color:rgb(217, 167, 170)  
}
```

If you want to add a text shadow in that color use the text-shadow property, you can generate a text shadow directly with our [CSS Text Shadow Generator](#).

Here you see how black text with a 4 pixel rgb(217, 167, 170) colored shadow looks like.

```
.shadow{ text-shadow: 4px 4px 2px rgb(217, 167, 170) }
```

Border

The CSS property to change the border of an element to CIELCh 73, 19.614, 16.458 is called "border". The border property can be set on classes, ids or directly on the HTML element.

This example shows the color as border, it can be applied via the CSS property "border" or "border-color".

```
.border, #border, table{ border:4px solid rgb(217, 167, 170) }
```

If only the border color should be changed use the property `border-color`.

```
.border{ border-color:rgb(217, 167, 170) }
```

If you want to add a box shadow in that color use:

Here you see how a box with a 4 pixel `rgb(217, 167, 170)` colored shadow looks like.

```
.boxshadow{ -moz-box-shadow:4px 4px 4px  
4px rgb(217, 167, 170); -webkit-box-  
shadow:4px 4px 4px 4px rgb(217, 167, 170);  
box-shadow:4px 4px 4px 4px rgb(217, 167,  
170) }
```

Background

The CSS property to change the background color of an element to CIELCh 73, 19.614, 16.458 is called "background". The background property can be set on classes, ids or directly on the HTML element.

```
.background, #background, body{  
background: rgb(217, 167, 170) }
```

If only the background color should be changed can be used:

```
.background{ background-color: rgb(217,  
167, 170) }
```

This example shows the color as background, it is applied via the CSS property "background".

To optimize and compress your CSS code, you can use our [online CSS compressor and optimizer](#) based on csstidy. If you want to create a linear or radial gradient as background or border, check our [CSS Gradient Generator](#).

Hey! You found this booklet interesting? Support Converting Colors with the new Membership Option!

The pro membership hides all ads, plus gives you double the colors in the color bucket, and more awesome pro features!

[Learn more, Memberships starting at \\$2.50/m!](#)

**Follow me
on Twitter!**

@ConvertingColor