

Converting Colors

CIELCh(73, 2.781, 8.272)

Have a look what the booklet for
CIELCh(73, 2.781, 8.272) contains.

CIELCh(73, 2.690, 7.839)	3
<i>Conversions</i>	4
<i>Details</i>	6
<i>Harmonies</i>	11
<i>Previews</i>	20
<i>Color Blindness Simulation</i>	23
<i>CSS Examples</i>	26

Color

CIELCh(73, 2.690, 7.839)

Conversions

Conversions Part 1

Format	Color
Hex	B9B2B3
RGB	185, 178, 179
RGB Percent	73%, 70%, 70%
CMY	0.2762, 0.3037, 0.2997
CMYK	0.00, 0.04, 0.03, 0.28
HSL	351°, 5%, 71%
HSV	351°, 4%, 72%
XYZ	43.8282, 45.1644, 48.8244
YIQ	180.2070, 3.8510, 1.7950

Conversions

Conversions Part 2

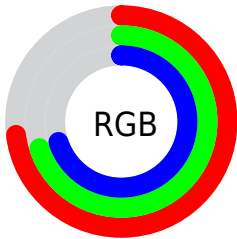
Format	Color
RYB	185, 178, 179
Decimal	12169907
CIELab	73.00, 2.66, 0.37
CIElCh	73, 2.690, 7.839
Yxy	45.1644, 0.3180, 0.3277
Android (android.graphics.Color)	4290359987 (0xFFB9B2B3)
YUV	180.2070, -0.5951, 4.2035
Hunter-Lab	67.2044, -1.1968, 3.9686

Details

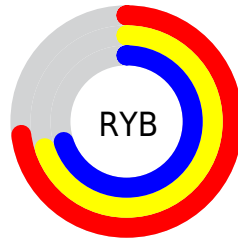
The CIELCh color $73, 2.690, 7.839$ is a light color, and the websafe version is hex `CCCCCC`. A complement of this color would be $74, 2.638, 187.609$, and the grayscale version is $73, 0.009, 296.813$.

A 20% lighter version of the original color is $93, 2.554, 7.715$, and $53, 2.873, 8.009$ is the 20% darker color. If you saturate the color by 10%, you get $68, 10.075, 8.947$, and if you desaturate by 10%, it is $78, 4.265, 187.371$.

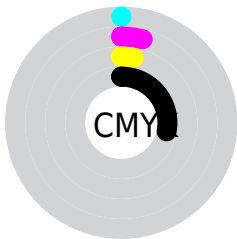
Distribution



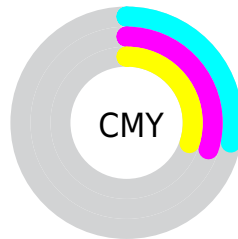
- Red (73%)
- Green (70%)
- Blue (70%)



- Red (73%)
- Yellow (70%)
- Blue (70%)



- Cyan (0%)
- Magenta (4%)
- Yellow (3%)
- Black (28%)



- Cyan (28%)
- Magenta (30%)
- Yellow (30%)

Brightness & Saturation Gradients

These gradients show how the CIELCh color 73, 2.690, 7.839 changes by changing the brightness by 10 percent. The first figure shows a shift by +10% for each color and the second figure -10%.

Similar to the brightness gradients but the following saturation gradients show a change of the CIELCh color 73, 2.690, 7.839 by changing the saturation by 10% instead.

■ 73, 2.690, 7.839

■ 73, 2.690, 7.839

■ 100, 2.690, 7.839

■ 63, 2.690, 7.839

■ 93, 2.690, 7.839

■ 53, 2.690, 7.839

■ 43, 2.690, 7.839

■ 33, 2.690, 7.839

■ 23, 2.690, 7.839

■ 13, 2.690, 7.839

■ 3, 2.690, 7.839

■ 0, 2.690, 7.839

■ 73, 2.690, 7.839

■ 73, 2.690, 7.839

68, 10.075, 8.947

78, 4.265, 187.371

63, 17.885, 10.099

84, 10.800,
186.614

58, 26.065, 11.488

89, 16.947,
185.999

53, 34.501, 13.207

49, 42.997, 15.368

94, 22.739,
185.464

45, 51.285, 18.106

96, 22.685,
198.019

42, 59.066, 21.552

40, 66.094, 25.763

39, 72.230, 30.567

Harmonies

Complementary

The Complementary color scheme is a pair of colors which are on the opposite of each other on the color wheel.



73, 2.690, 7.839



74, 2.638, 187.609

Rectangle

The Rectangle color scheme consists of four colors that form a rectangle on the color wheel.



73, 2.690, 7.839



73, 2.690, 57.839



73, 2.690, 187.839



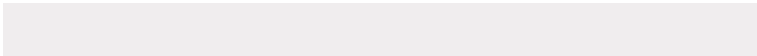
73, 2.690, 237.839

Sweetspot

The Sweet Spot groups the original color and five complimentary colors.



73, 2.688, 7.869



94, 0.873, 7.129



73, 4.418, 320.410



50, 0.496, 7.086



97, 0.011, 296.813



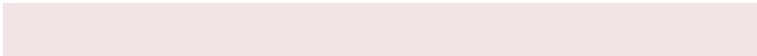
50, 0.007, 296.813

Same Dimension

The Same Dimension uses a secret algorithm to generate beautiful new colors.



73, 2.688, 7.869



91, 4.403, 8.030



74, 2.148, 57.236



37, 2.414, 8.089



32, 66.244, 32.708



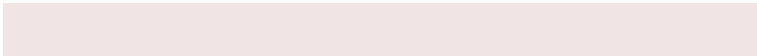
2, 10.781, 10.808

Inverse Universe

The Inverse Universe completely reimagines the original color for something new.



73, 2.688, 7.869



91, 4.403, 8.030



74, 2.119, 238.310



37, 2.414, 8.089



32, 66.244, 32.708



2, 10.781, 10.808

Previews

White Background



This preview shows how the CIELCh color 73, 2.690, 7.839 looks on a white background.

Color Contrast Check

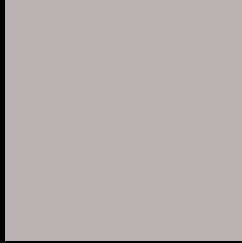
Large Text (above 18pt) WCAG AA × Fail

Any Text WCAG AA × Fail

Large Text (above 18pt) WCAG AAA × Fail

Any Text WCAG AAA × Fail

Black Background



This preview shows how the CIE LCh color 73, 2.690, 7.839 looks on a black background.

Color Contrast Check

Large Text (above 18pt) WCAG AA ✓ Pass

Any Text WCAG AA ✓ Pass

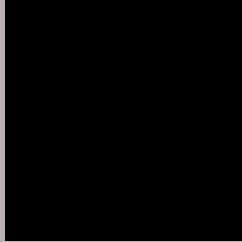
Large Text (above 18pt) WCAG AAA ✓ Pass

Any Text WCAG AAA ✓ Pass

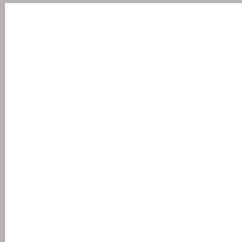
If you want to check with other color combinations, try the [Color Contrast Checker](#).

CIELCh 73, 2.690, 7.839

Background



This preview shows how black text looks on a background with the CIELCh color 73, 2.690, 7.839.

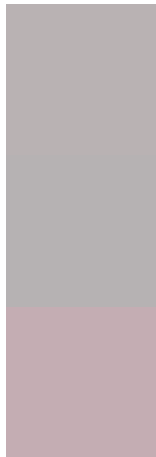


This preview shows how white text looks on a background with the CIELCh color 73, 2.690, 7.839.

Color Blindness Simulation

Color vision deficiency is a very complex topic, and I could not describe the different causes any better than Wikipedia does, so if you want to learn more, you should check out their [article about color blindness](#).

Dichromacy



Original Color


73, 2.690, 7.839

Protanopia

73, 1.601, 359.429

Deuteranopia

73, 9.316, 359.809



Tritanopia
73, 8.490, 316.469

Trichromacy



Original Color

73, 2.690, 7.839

Protanomaly

73, 1.958, 3.250

Deuteranomaly

73, 6.792, 1.360

Tritanomaly

73, 5.747, 321.591

Monochromacy



Original Color

73, 2.690, 7.839

Achromatopsia

73, 0.009, 296.813

Achromatomaly

73, 1.123, 19.047

CSS Examples

Text

The CSS property to change the color of the text to CIELCh 73, 2.690, 7.839 is called "color". The color property can be set on classes, ids or directly on the HTML element.

This example shows how text in the color `rgb(185, 178, 179)` looks like.

```
.text, #text, p{  
    color:rgb(185, 178, 179)  
}
```

If you want to add a text shadow in that color use the text-shadow property, you can generate a text shadow directly with our [CSS Text Shadow Generator](#).

Here you see how black text with a 4 pixel rgb(185, 178, 179) colored shadow looks like.

```
.shadow{ text-shadow: 4px 4px 2px rgb(185, 178, 179) }
```

Border

The CSS property to change the border of an element to CIELCh 73, 2.690, 7.839 is called "border". The border property can be set on classes, ids or directly on the HTML element.

This example shows the color as border, it can be applied via the CSS property "border" or "border-color".

```
.border, #border, table{ border:4px solid rgb(185, 178, 179) }
```

If only the border color should be changed use the property `border-color`.

```
.border{ border-color:rgb(185, 178, 179) }
```

If you want to add a box shadow in that color use:

Here you see how a box with a 4 pixel `rgb(185, 178, 179)` colored shadow looks like.

```
.boxshadow{ -moz-box-shadow:4px 4px 4px  
4px rgb(185, 178, 179); -webkit-box-  
shadow:4px 4px 4px 4px rgb(185, 178, 179);  
box-shadow:4px 4px 4px 4px rgb(185, 178,  
179) }
```

Background

The CSS property to change the background color of an element to CIELCh 73, 2.690, 7.839 is called "background". The background property can be set on classes, ids or directly on the HTML element.

```
.background, #background, body{  
background: rgb(185, 178, 179) }
```

If only the background color should be changed can be used:

```
.background{ background-color: rgb(185,  
178, 179) }
```

This example shows the color as background, it is applied via the CSS property "background".

To optimize and compress your CSS code, you can use our [online CSS compressor and optimizer](#) based on csstidy. If you want to create a linear or radial gradient as background or border, check our [CSS Gradient Generator](#).

Hey! You found this booklet interesting? Support Converting Colors with the new Membership Option!

The pro membership hides all ads, plus gives you double the colors in the color bucket, and more awesome pro features!

[Learn more, Memberships starting at \\$2.50/m!](#)

**Follow me
on Twitter!**

@ConvertingColor