

Converting Colors

CIELCh(73, 20.299, 15.213)

Have a look what the booklet for
CIELCh(73, 20.299, 15.213) contains.

CIELCh(73, 20.439, 15.233)	3
<i>Conversions</i>	4
<i>Details</i>	6
<i>Harmonies</i>	11
<i>Previews</i>	20
<i>Color Blindness Simulation</i>	23
<i>CSS Examples</i>	26

Color

CIELCh(73, 20.439, 15.233)

Conversions

Conversions Part 1

Format	Color
Hex	DAA6AA
RGB	218, 166, 170
RGB Percent	85%, 65%, 67%
CMY	0.1445, 0.3484, 0.3327
CMYK	0.00, 0.24, 0.22, 0.14
HSL	355°, 41%, 75%
HSV	355°, 24%, 86%
XYZ	49.8939, 45.1644, 44.1918
YIQ	182.0040, 29.7080, 12.2680

Conversions

Conversions Part 2

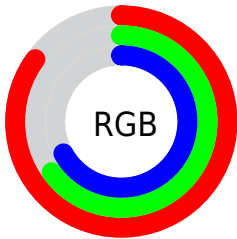
Format	Color
R_{YB}	218, 166, 170
Decimal	14329514
CIE Lab	73.00, 19.72, 5.37
CIE LCh	73, 20.439, 15.233
Yxy	45.1644, 0.3583, 0.3243
Android (android.graphics.Color)	4292519594 (0xFFDAA6AA)
YUV	182.0040, -5.9180, 31.5685
Hunter-Lab	67.2044, 14.9141, 8.0556

Details

The CIELCh color **73, 20.439, 15.233** is a light color, and the websafe version is hex **CC9999**. A complement of this color would be **84, 17.841, 191.339**, and the grayscale version is **74, 0.009, 296.813**.

A 20% lighter version of the original color is **91, 12.598, 10.874**, and **53, 20.269, 15.395** is the 20% darker color. If you saturate the color by 10%, you get **67, 29.930, 16.583**, and if you desaturate by 10%, it is **79, 11.472, 14.150**.

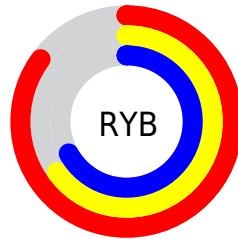
Distribution



Red (85%)

Green (65%)

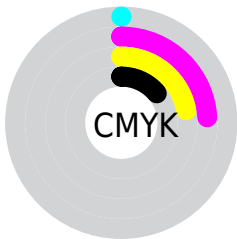
Blue (67%)



Red (85%)

Yellow (65%)

Blue (67%)

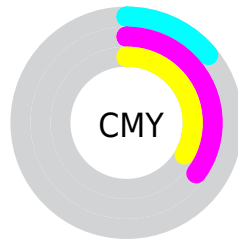


Cyan (0%)

Magenta (24%)

Yellow (22%)

Black (14%)



Cyan (14%)

Magenta (35%)

Yellow (33%)

Brightness & Saturation Gradients

These gradients show how the CIELCh color 73, 20.439, 15.233 changes by changing the brightness by 10 percent. The first figure shows a shift by +10% for each color and the second figure -10%.

Similar to the brightness gradients but the following saturation gradients show a change of the CIELCh color 73, 20.439, 15.233 by changing the saturation by 10% instead.

73, 20.439, 15.233

73, 20.439, 15.233

100, 20.439,
15.233

63, 20.439, 15.233

93, 20.439, 15.233

53, 20.439, 15.233

43, 20.439, 15.233

33, 20.439, 15.233

23, 20.439, 15.233

13, 20.439, 15.233

3, 20.439, 15.233

0, 20.439, 15.233

73, 20.439, 15.233

73, 20.439, 15.233

67, 29.930, 16.583

79, 11.472, 14.150

62, 39.841, 18.284

85, 3.075, 13.147

57, 49.967, 20.458

91, 4.761, 192.743

53, 60.013, 23.232

97, 12.067,
192.073

50, 69.634, 26.702

97, 12.398,
198.678

47, 78.477, 30.814

46, 86.052, 35.147

46, 89.797, 37.381

Harmonies

Complementary

The Complementary color scheme is a pair of colors which are on the opposite of each other on the color wheel.



73, 20.439, 15.233



84, 17.841, 191.339

Rectangle

The Rectangle color scheme consists of four colors that form a rectangle on the color wheel.



73, 20.439, 15.233



73, 20.439, 65.233



73, 20.439, 195.233



73, 20.439, 245.233

Sweetspot

The Sweet Spot groups the original color and five complimentary colors.



73, 20.437, 15.238



95, 6.434, 13.494



74, 32.823, 323.353



50, 4.189, 13.553



0, 0.000, 0.000



53, 0.007, 296.813

Same Dimension

The Same Dimension uses a secret algorithm to generate beautiful new colors.



73, 20.437, 15.238



81, 28.711, 15.929



78, 16.742, 63.349



43, 4.655, 13.723



36, 75.083, 36.760



5, 23.745, 16.954

Inverse Universe

The Inverse Universe completely reimagines the original color for something new.



73, 20.437, 15.238



81, 28.711, 15.929



78, 15.173, 249.114



43, 4.655, 13.723



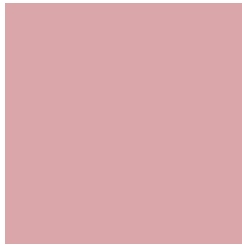
36, 75.083, 36.760



5, 23.745, 16.954

Previews

White Background



This preview shows how the CIELCh color 73, 20.439, 15.233 looks on a white background.

Color Contrast Check

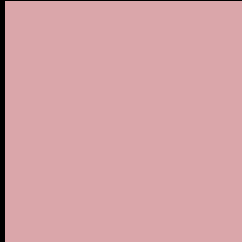
Large Text (above 18pt) WCAG AA × Fail

Any Text WCAG AA × Fail

Large Text (above 18pt) WCAG AAA × Fail

Any Text WCAG AAA × Fail

Black Background



This preview shows how the CIELCh color 73, 20.439, 15.233 looks on a black background.

Color Contrast Check

Large Text (above 18pt) WCAG AA ✓ Pass

Any Text WCAG AA ✓ Pass

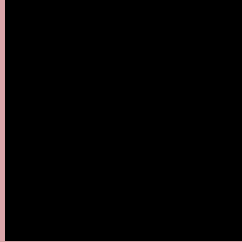
Large Text (above 18pt) WCAG AAA ✓ Pass

Any Text WCAG AAA ✓ Pass

If you want to check with other color combinations, try the [Color Contrast Checker](#).

CIELCh 73, 20.439, 15.233

Background



This preview shows how black text looks on a background with the CIELCh color 73, 20.439, 15.233.

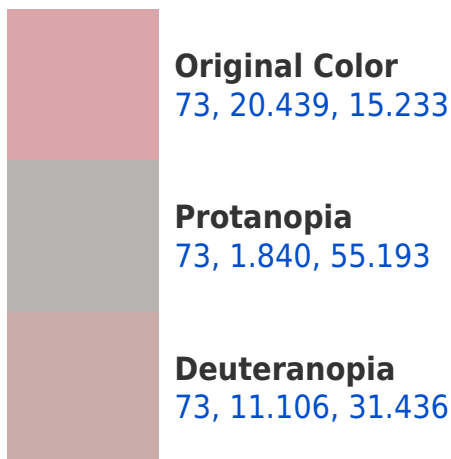


This preview shows how white text looks on a background with the CIELCh color 73, 20.439, 15.233.

Color Blindness Simulation

Color vision deficiency is a very complex topic, and I could not describe the different causes any better than Wikipedia does, so if you want to learn more, you should check out their [article about color blindness](#).

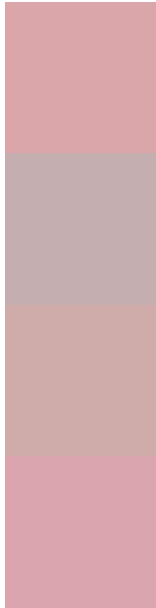
Dichromacy





Tritanopia
73, 21.862, 2.827

Trichromacy



Original Color
73, 20.439, 15.233

Protanomaly
73, 8.430, 16.406

Deuteranomaly
73, 14.099, 24.944

Tritanomaly
73, 21.537, 6.978

Monochromacy



Original Color
73, 20.439, 15.233

Achromatopsia
74, 0.009, 296.813

Achromatomaly
73, 7.299, 11.470

CSS Examples

Text

The CSS property to change the color of the text to CIELCh 73, 20.439, 15.233 is called "color". The color property can be set on classes, ids or directly on the HTML element.

This example shows how text in the color `rgb(218, 166, 170)` looks like.

```
.text, #text, p{  
    color:rgb(218, 166, 170)  
}
```

If you want to add a text shadow in that color use the text-shadow property, you can generate a text shadow directly with our [CSS Text Shadow Generator](#).

Here you see how black text with a 4 pixel rgb(218, 166, 170) colored shadow looks like.

```
.shadow{ text-shadow: 4px 4px 2px rgb(218, 166, 170) }
```

Border

The CSS property to change the border of an element to CIELCh 73, 20.439, 15.233 is called "border". The border property can be set on classes, ids or directly on the HTML element.

This example shows the color as border, it can be applied via the CSS property "border" or "border-color".

```
.border, #border, table{ border:4px solid rgb(218, 166, 170) }
```

If only the border color should be changed use the property `border-color`.

```
.border{ border-color:rgb(218, 166, 170) }
```

If you want to add a box shadow in that color use:

Here you see how a box with a 4 pixel `rgb(218, 166, 170)` colored shadow looks like.

```
.boxshadow{ -moz-box-shadow:4px 4px 4px  
4px rgb(218, 166, 170); -webkit-box-  
shadow:4px 4px 4px 4px rgb(218, 166, 170);  
box-shadow:4px 4px 4px 4px rgb(218, 166,  
170) }
```

Background

The CSS property to change the background color of an element to CIELCh 73, 20.439, 15.233 is called "background". The background property can be set on classes, ids or directly on the HTML element.

```
.background, #background, body{  
background: rgb(218, 166, 170) }
```

If only the background color should be changed can be used:

```
.background{ background-color: rgb(218,  
166, 170) }
```

This example shows the color as background, it is applied via the CSS property "background".

To optimize and compress your CSS code, you can use our [online CSS compressor and optimizer](#) based on csstidy. If you want to create a linear or radial gradient as background or border, check our [CSS Gradient Generator](#).

Hey! You found this booklet interesting? Support Converting Colors with the new Membership Option!

The pro membership hides all ads, plus gives you double the colors in the color bucket, and more awesome pro features!

[Learn more, Memberships starting at \\$2.50/m!](#)

**Follow me
on Twitter!**

@ConvertingColor