

Converting Colors

CIELCh(73, 20.677, 10.982)

Have a look what the booklet for
CIELCh(73, 20.677, 10.982) contains.

CIELCh(73, 20.529, 10.748)	3
<i>Conversions</i>	4
<i>Details</i>	6
<i>Harmonies</i>	11
<i>Previews</i>	20
<i>Color Blindness Simulation</i>	23
<i>CSS Examples</i>	26

Color

CIELCh(73, 20.529, 10.748)

Conversions

Conversions Part 1

Format	Color
Hex	DAA6AD
RGB	218, 166, 173
RGB Percent	85%, 65%, 68%
CMY	0.1453, 0.3492, 0.3218
CMYK	0.00, 0.24, 0.21, 0.15
HSL	352°, 41%, 75%
HSV	352°, 24%, 85%
XYZ	50.0603, 45.1644, 45.5866
YIQ	182.3460, 28.7450, 13.2010

Conversions

Conversions Part 2

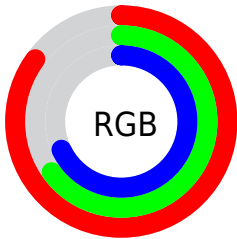
Format	Color
R _Y B	218, 166, 173
Decimal	14329517
CIE Lab	73.00, 20.17, 3.83
CIE LCh	73, 20.529, 10.748
Yxy	45.1644, 0.3555, 0.3207
Android (android.graphics.Color)	4292519597 (0xFFDAA6AD)
YUV	182.3460, -4.6076, 31.2686
Hunter-Lab	67.2044, 15.3561, 6.8251

Details

The CIELCh color **73, 20.529, 10.748** is a light color, and the websafe version is hex **CC9999**. A complement of this color would be **83, 18.246, 186.392**, and the grayscale version is **74, 0.009, 296.813**.

A 20% lighter version of the original color is **91, 12.887, 4.063**, and **53, 20.335, 10.578** is the 20% darker color. If you saturate the color by 10%, you get **67, 29.914, 12.163**, and if you desaturate by 10%, it is **79, 11.577, 9.590**.

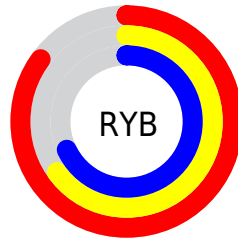
Distribution



Red (85%)

Green (65%)

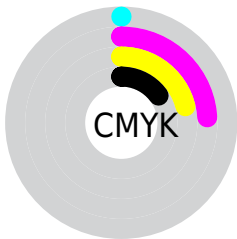
Blue (68%)



Red (85%)

Yellow (65%)

Blue (68%)

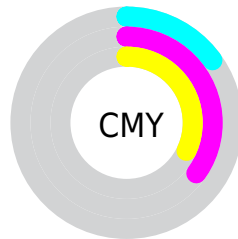


Cyan (0%)

Magenta (24%)

Yellow (21%)

Black (15%)



Cyan (15%)

Magenta (35%)

Yellow (32%)

Brightness & Saturation Gradients

These gradients show how the CIELCh color 73, 20.529, 10.748 changes by changing the brightness by 10 percent. The first figure shows a shift by +10% for each color and the second figure -10%.

Similar to the brightness gradients but the following saturation gradients show a change of the CIELCh color 73, 20.529, 10.748 by changing the saturation by 10% instead.

73, 20.529, 10.748

73, 20.529, 10.748

100, 20.529,
10.748

63, 20.529, 10.748

93, 20.529, 10.748

53, 20.529, 10.748

43, 20.529, 10.748

33, 20.529, 10.748

23, 20.529, 10.748

13, 20.529, 10.748

3, 20.529, 10.748

0, 20.529, 10.748

73, 20.529, 10.748

73, 20.529, 10.748

67, 29.914, 12.163

79, 11.577, 9.590

62, 39.604, 13.916

85, 3.126, 8.512

57, 49.368, 16.131

91, 4.817, 188.010

53, 58.891, 18.946

97, 12.271,
187.255

50, 67.826, 22.491

97, 12.467,
198.673

48, 75.891, 26.800

46, 82.904, 31.644

46, 86.717, 34.469

Harmonies

Complementary

The Complementary color scheme is a pair of colors which are on the opposite of each other on the color wheel.



73, 20.529, 10.748



83, 18.246, 186.392

Rectangle

The Rectangle color scheme consists of four colors that form a rectangle on the color wheel.



73, 20.529, 10.748



73, 20.529, 60.748



73, 20.529, 190.748



73, 20.529, 240.748

Sweetspot

The Sweet Spot groups the original color and five complimentary colors.



73, 20.527, 10.753



95, 6.507, 8.880



74, 32.247, 321.383



50, 4.236, 8.944



0, 0.000, 0.000



53, 0.007, 296.813

Same Dimension

The Same Dimension uses a secret algorithm to generate beautiful new colors.



73, 20.527, 10.753



81, 28.765, 11.478



77, 16.629, 55.762



43, 4.703, 9.127



36, 72.487, 33.669



5, 23.721, 14.455

Inverse Universe

The Inverse Universe completely reimagines the original color for something new.



73, 20.527, 10.753



81, 28.765, 11.478



79, 14.690, 240.475



43, 4.703, 9.127



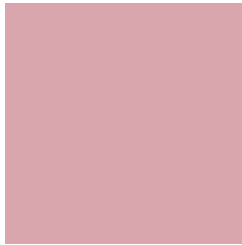
36, 72.487, 33.669



5, 23.721, 14.455

Previews

White Background



This preview shows how the CIELCh color 73, 20.529, 10.748 looks on a white background.

Color Contrast Check

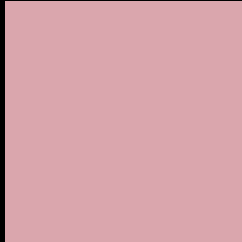
Large Text (above 18pt) WCAG AA × Fail

Any Text WCAG AA × Fail

Large Text (above 18pt) WCAG AAA × Fail

Any Text WCAG AAA × Fail

Black Background



This preview shows how the CIELCh color 73, 20.529, 10.748 looks on a black background.

Color Contrast Check

Large Text (above 18pt) WCAG AA ✓ Pass

Any Text WCAG AA ✓ Pass

Large Text (above 18pt) WCAG AAA ✓ Pass

Any Text WCAG AAA ✓ Pass

If you want to check with other color combinations, try the [Color Contrast Checker](#).

CIELCh 73, 20.529, 10.748

Background



This preview shows how black text looks on a background with the CIELCh color 73, 20.529, 10.748.

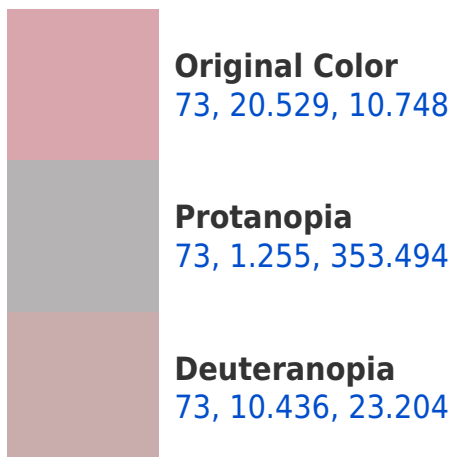


This preview shows how white text looks on a background with the CIELCh color 73, 20.529, 10.748.

Color Blindness Simulation

Color vision deficiency is a very complex topic, and I could not describe the different causes any better than Wikipedia does, so if you want to learn more, you should check out their [article about color blindness](#).

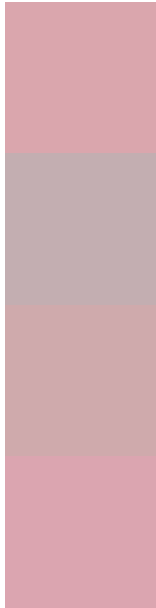
Dichromacy





Tritanopia
73, 21.862, 2.827

Trichromacy



Original Color
73, 20.529, 10.748

Protanomaly
73, 8.157, 8.605

Deuteranomaly
73, 14.379, 16.359

Tritanomaly
73, 21.632, 5.581

Monochromacy



Original Color
73, 20.529, 10.748

Achromatopsia
74, 0.009, 296.813

Achromatomaly
73, 7.387, 7.325

CSS Examples

Text

The CSS property to change the color of the text to CIELCh 73, 20.529, 10.748 is called "color". The color property can be set on classes, ids or directly on the HTML element.

This example shows how text in the color `rgb(218, 166, 173)` looks like.

```
.text, #text, p{  
    color:rgb(218, 166, 173)  
}
```

If you want to add a text shadow in that color use the text-shadow property, you can generate a text shadow directly with our [CSS Text Shadow Generator](#).

Here you see how black text with a 4 pixel rgb(218, 166, 173) colored shadow looks like.

```
.shadow{ text-shadow: 4px 4px 2px rgb(218, 166, 173) }
```

Border

The CSS property to change the border of an element to CIELCh 73, 20.529, 10.748 is called "border". The border property can be set on classes, ids or directly on the HTML element.

This example shows the color as border, it can be applied via the CSS property "border" or "border-color".

```
.border, #border, table{ border:4px solid rgb(218, 166, 173) }
```

If only the border color should be changed use the property `border-color`.

```
.border{ border-color:rgb(218, 166, 173) }
```

If you want to add a box shadow in that color use:

Here you see how a box with a 4 pixel `rgb(218, 166, 173)` colored shadow looks like.

```
.boxshadow{ -moz-box-shadow:4px 4px 4px  
4px rgb(218, 166, 173); -webkit-box-  
shadow:4px 4px 4px 4px rgb(218, 166, 173);  
box-shadow:4px 4px 4px 4px rgb(218, 166,  
173) }
```

Background

The CSS property to change the background color of an element to CIELCh 73, 20.529, 10.748 is called "background". The background property can be set on classes, ids or directly on the HTML element.

```
.background, #background, body{  
background: rgb(218, 166, 173) }
```

If only the background color should be changed can be used:

```
.background{ background-color: rgb(218,  
166, 173) }
```

This example shows the color as background, it is applied via the CSS property "background".

To optimize and compress your CSS code, you can use our [online CSS compressor and optimizer](#) based on csstidy. If you want to create a linear or radial gradient as background or border, check our [CSS Gradient Generator](#).

Hey! You found this booklet interesting? Support Converting Colors with the new Membership Option!

The pro membership hides all ads, plus gives you double the colors in the color bucket, and more awesome pro features!

[Learn more, Memberships starting at \\$2.50/m!](#)

**Follow me
on Twitter!**

@ConvertingColor