

Converting Colors

CIELCh(73, 21.026, 67.793)

Have a look what the booklet for
CIELCh(73, 21.026, 67.793) contains.

CIELCh(73, 21.141, 67.442)	3
<i>Conversions</i>	4
<i>Details</i>	6
<i>Harmonies</i>	11
<i>Previews</i>	20
<i>Color Blindness Simulation</i>	23
<i>CSS Examples</i>	26

Color

CIELCh(73, 21.141, 67.442)

Conversions

Conversions Part 1

Format	Color
Hex	CFAD90
RGB	207, 173, 144
RGB Percent	81%, 68%, 56%
CMY	0.1882, 0.3216, 0.4353
CMYK	0.00, 0.16, 0.30, 0.19
HSL	28°, 40%, 69%
HSV	28°, 30%, 81%
XYZ	45.7079, 45.1644, 32.6928
YIQ	179.8600, 29.5730, -1.8110

Conversions

Conversions Part 2

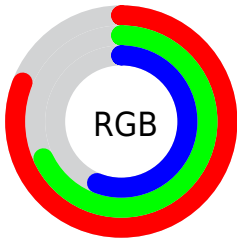
Format	Color
R _Y B	207, 198, 144
Decimal	13610384
CIE Lab	73.00, 8.11, 19.52
CIE LCh	73, 21.141, 67.442
Yxy	45.1644, 0.3699, 0.3655
Android (android.graphics.Color)	4291800464 (0xFFCFAD90)
YUV	179.8600, -17.6790, 23.8018
Hunter-Lab	67.2044, 3.7958, 18.2004

Details

The CIELCh color **73, 21.141, 67.442** is a light color, and the websafe version is hex **CC9966**. A complement of this color would be **71, 19.025, 255.648**, and the grayscale version is **73, 0.009, 296.813**.

A 20% lighter version of the original color is **92, 18.629, 75.346**, and **53, 21.491, 68.067** is the 20% darker color. If you saturate the color by 10%, you get **70, 28.865, 66.292**, and if you desaturate by 10%, it is **76, 13.813, 68.608**.

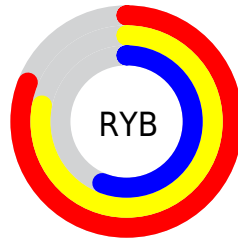
Distribution



Red (81%)

Green (68%)

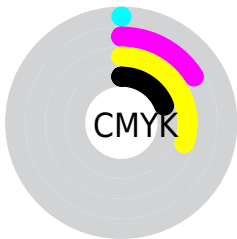
Blue (56%)



Red (81%)

Yellow (78%)

Blue (56%)

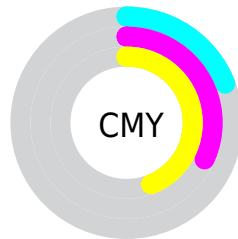


Cyan (0%)

Magenta (16%)

Yellow (30%)

Black (19%)



Cyan (19%)

Magenta (32%)

Yellow (44%)


Brightness & Saturation Gradients

These gradients show how the CIELCh color 73, 21.141, 67.442 changes by changing the brightness by 10 percent. The first figure shows a shift by +10% for each color and the second figure -10%.

Similar to the brightness gradients but the following saturation gradients show a change of the CIELCh color 73, 21.141, 67.442 by changing the saturation by 10% instead.

 73, 21.141, 67.442

 73, 21.141, 67.442

 100, 21.141,
67.442

 63, 21.141, 67.442

 93, 21.141, 67.442

 53, 21.141, 67.442

 43, 21.141, 67.442

 33, 21.141, 67.442

 23, 21.141, 67.442

 13, 21.141, 67.442

 3, 21.141, 67.442

 0, 21.141, 67.442

 73, 21.141, 67.442

 73, 21.141, 67.442

70, 28.865, 66.292

76, 13.813, 68.608

67, 36.972, 65.140

80, 6.867, 69.745

64, 45.385, 63.978

83, 0.272, 69.458

61, 53.907, 62.754

86, 6.005, 252.167

58, 62.105, 61.341

90, 11.998,
253.244

56, 69.160, 59.471

93, 13.216,
234.816

53, 74.287, 57.134

96, 14.746,
206.189

97, 15.941,
198.446

Harmonies

Complementary

The Complementary color scheme is a pair of colors which are on the opposite of each other on the color wheel.



73, 21.141, 67.442



71, 19.025, 255.648

Rectangle

The Rectangle color scheme consists of four colors that form a rectangle on the color wheel.



73, 21.141, 67.442



73, 21.141, 117.442



73, 21.141, 247.442



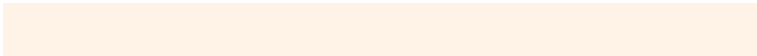
73, 21.141, 297.442

Sweetspot

The Sweet Spot groups the original color and five complimentary colors.



73, 21.141, 67.450



96, 6.990, 69.890



67, 30.262, 343.719



51, 4.877, 69.729



0, 0.000, 0.000



53, 0.007, 296.813

Same Dimension

The Same Dimension uses a secret algorithm to generate beautiful new colors.



73, 21.141, 67.450



86, 31.031, 66.637



81, 31.368, 105.028



42, 3.754, 69.857



44, 63.447, 57.731



8, 15.761, 53.742

Inverse Universe

The Inverse Universe completely reimagines the original color for something new.



71, 19.025, 255.648



83, 27.161, 257.121



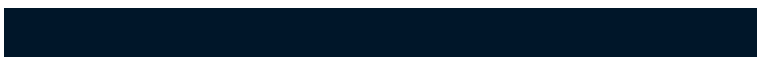
63, 33.521, 291.980



42, 3.651, 252.248



38, 48.512, 279.540



7, 15.354, 268.035

Previews

White Background



This preview shows how the CIELCh color 73, 21.141, 67.442 looks on a white background.

Color Contrast Check

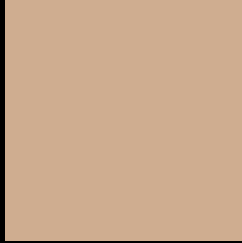
Large Text (above 18pt) WCAG AA × Fail

Any Text WCAG AA × Fail

Large Text (above 18pt) WCAG AAA × Fail

Any Text WCAG AAA × Fail

Black Background



This preview shows how the CIELCh color 73, 21.141, 67.442 looks on a black background.

Color Contrast Check

Large Text (above 18pt) WCAG AA ✓ Pass

Any Text WCAG AA ✓ Pass

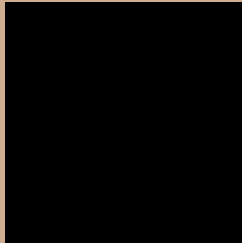
Large Text (above 18pt) WCAG AAA ✓ Pass

Any Text WCAG AAA ✓ Pass

If you want to check with other color combinations, try the [Color Contrast Checker](#).

CIELCh 73, 21.141, 67.442

Background



This preview shows how black text looks on a background with the CIELCh color 73, 21.141, 67.442.



This preview shows how white text looks on a background with the CIELCh color 73, 21.141, 67.442.

Color Blindness Simulation

Color vision deficiency is a very complex topic, and I could not describe the different causes any better than Wikipedia does, so if you want to learn more, you should check out their [article about color blindness](#).

Dichromacy





Tritanopia
73, 17.800, 357.865

Trichromacy



Original Color
73, 21.141, 67.442

Protanomaly
73, 18.467, 83.914

Deuteranomaly
73, 21.333, 64.931

Tritanomaly
73, 15.719, 24.641

Monochromacy



Original Color
73, 21.141, 67.442

Achromatopsia
73, 0.009, 296.813

Achromatomaly
73, 7.377, 66.662

CSS Examples

Text

The CSS property to change the color of the text to CIELCh 73, 21.141, 67.442 is called "color". The color property can be set on classes, ids or directly on the HTML element.

This example shows how text in the color `rgb(207, 173, 144)` looks like.

```
.text, #text, p{  
    color:rgb(207, 173, 144)  
}
```

If you want to add a text shadow in that color use the text-shadow property, you can generate a text shadow directly with our [CSS Text Shadow Generator](#).

Here you see how black text with a 4 pixel rgb(207, 173, 144) colored shadow looks like.

```
.shadow{ text-shadow: 4px 4px 2px rgb(207, 173, 144) }
```

Border

The CSS property to change the border of an element to CIELCh 73, 21.141, 67.442 is called "border". The border property can be set on classes, ids or directly on the HTML element.

This example shows the color as border, it can be applied via the CSS property "border" or "border-color".

```
.border, #border, table{ border:4px solid rgb(207, 173, 144) }
```

If only the border color should be changed use the property `border-color`.

```
.border{ border-color:rgb(207, 173, 144) }
```

If you want to add a box shadow in that color use:

Here you see how a box with a 4 pixel `rgb(207, 173, 144)` colored shadow looks like.

```
.boxshadow{ -moz-box-shadow:4px 4px 4px  
4px rgb(207, 173, 144); -webkit-box-  
shadow:4px 4px 4px 4px rgb(207, 173, 144);  
box-shadow:4px 4px 4px 4px rgb(207, 173,  
144) }
```

Background

The CSS property to change the background color of an element to CIELCh 73, 21.141, 67.442 is called "background". The background property can be set on classes, ids or directly on the HTML element.

```
.background, #background, body{  
background: rgb(207, 173, 144) }
```

If only the background color should be changed can be used:

```
.background{ background-color: rgb(207,  
173, 144) }
```

This example shows the color as background, it is applied via the CSS property "background".

To optimize and compress your CSS code, you can use our [online CSS compressor and optimizer](#) based on csstidy. If you want to create a linear or radial gradient as background or border, check our [CSS Gradient Generator](#).

Hey! You found this booklet interesting? Support Converting Colors with the new Membership Option!

The pro membership hides all ads, plus gives you double the colors in the color bucket, and more awesome pro features!

[Learn more, Memberships starting at \\$2.50/m!](#)

**Follow me
on Twitter!**

@ConvertingColor