

Converting Colors

CIELCh(73, 23.415, 33.603)

Have a look what the booklet for
CIELCh(73, 23.415, 33.603) contains.

CIELCh(73, 23.364, 34.496)	3
<i>Conversions</i>	4
<i>Details</i>	6
<i>Harmonies</i>	11
<i>Previews</i>	20
<i>Color Blindness Simulation</i>	23
<i>CSS Examples</i>	26

Color

CIELCh(73, 23.364, 34.496)

Conversions

Conversions Part 1

Format	Color
Hex	DEA69C
RGB	222, 166, 156
RGB Percent	87%, 65%, 61%
CMY	0.1297, 0.3493, 0.3885
CMYK	0.00, 0.25, 0.30, 0.13
HSL	9°, 50%, 74%
HSV	9°, 30%, 87%
XYZ	49.7215, 45.1644, 37.5201
YIQ	181.6040, 36.5860, 8.7620

Conversions

Conversions Part 2

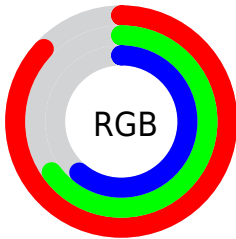
Format	Color
R _Y B	222, 168, 156
Decimal	14591644
CIE Lab	73.00, 19.26, 13.23
CIE LCh	73, 23.364, 34.496
Yxy	45.1644, 0.3755, 0.3411
Android (android.graphics.Color)	4292781724 (0xFFDEA69C)
YUV	181.6040, -12.6228, 35.4273
Hunter-Lab	67.2044, 14.4562, 13.9416

Details

The CIELCh color **73, 23.364, 34.496** is a light color, and the websafe version is hex **CC9999**. A complement of this color would be **82, 18.915, 214.614**, and the grayscale version is **74, 0.009, 296.813**.

A 20% lighter version of the original color is **91, 13.984, 44.047**, and **53, 23.468, 34.442** is the 20% darker color. If you saturate the color by 10%, you get **68, 32.541, 35.026**, and if you desaturate by 10%, it is **78, 14.867, 34.175**.

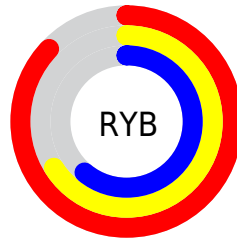
Distribution



Red (87%)

Green (65%)

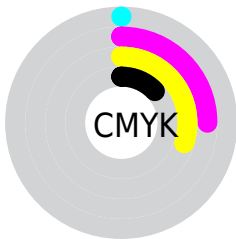
Blue (61%)



Red (87%)

Yellow (66%)

Blue (61%)

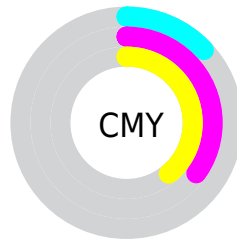


Cyan (0%)

Magenta (25%)

Yellow (30%)

Black (13%)



Cyan (13%)

Magenta (35%)

Yellow (39%)


Brightness & Saturation Gradients

These gradients show how the CIELCh color 73, 23.364, 34.496 changes by changing the brightness by 10 percent. The first figure shows a shift by +10% for each color and the second figure -10%.

Similar to the brightness gradients but the following saturation gradients show a change of the CIELCh color 73, 23.364, 34.496 by changing the saturation by 10% instead.

 73, 23.364, 34.496

 73, 23.364, 34.496

 100, 23.364,
34.496

 63, 23.364, 34.496

 93, 23.364, 34.496

 53, 23.364, 34.496

 43, 23.364, 34.496

 33, 23.364, 34.496

 23, 23.364, 34.496

 13, 23.364, 34.496

 3, 23.364, 34.496

 0, 23.364, 34.496

 73, 23.364, 34.496

 73, 23.364, 34.496

68, 32.541, 35.026

78, 14.867, 34.175

63, 42.384, 35.800

83, 7.034, 33.975

59, 52.799, 36.870

89, 0.184, 217.264

55, 63.581, 38.244

94, 6.844, 214.166

52, 74.292, 39.819

98, 11.176,
198.760

50, 83.967, 41.217

48, 91.144, 41.933

48, 91.320, 41.964

Harmonies

Complementary

The Complementary color scheme is a pair of colors which are on the opposite of each other on the color wheel.



73, 23.364, 34.496



82, 18.915, 214.614

Rectangle

The Rectangle color scheme consists of four colors that form a rectangle on the color wheel.



73, 23.364, 34.496



73, 23.364, 84.496



73, 23.364, 214.496



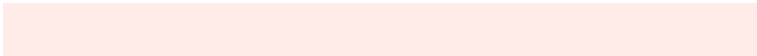
73, 23.364, 264.496

Sweetspot

The Sweet Spot groups the original color and five complimentary colors.



73, 23.362, 34.502



95, 7.257, 33.963



72, 38.315, 330.658



50, 5.074, 33.990



0, 0.000, 0.000



53, 0.007, 296.813

Same Dimension

The Same Dimension uses a secret algorithm to generate beautiful new colors.



73, 23.362, 34.502



79, 32.532, 34.819



81, 24.539, 85.905



44, 4.134, 33.970



38, 76.446, 42.264



7, 23.039, 29.173

Inverse Universe

The Inverse Universe completely reimagines the original color for something new.



82, 18.915, 214.614



91, 24.946, 214.925



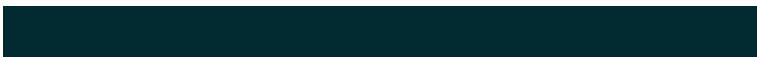
73, 24.223, 274.411



46, 3.891, 214.166



57, 32.992, 224.886



14, 13.657, 219.643

Previews

White Background



This preview shows how the CIELCh color 73, 23.364, 34.496 looks on a white background.

Color Contrast Check

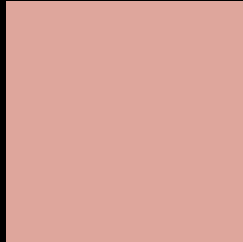
Large Text (above 18pt) WCAG AA × Fail

Any Text WCAG AA × Fail

Large Text (above 18pt) WCAG AAA × Fail

Any Text WCAG AAA × Fail

Black Background



This preview shows how the CIELCh color 73, 23.364, 34.496 looks on a black background.

Color Contrast Check

Large Text (above 18pt) WCAG AA ✓ Pass

Any Text WCAG AA ✓ Pass

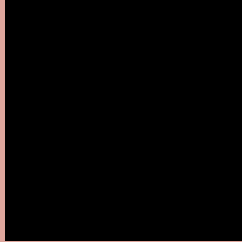
Large Text (above 18pt) WCAG AAA ✓ Pass

Any Text WCAG AAA ✓ Pass

If you want to check with other color combinations, try the [Color Contrast Checker](#).

CIELCh 73, 23.364, 34.496

Background



This preview shows how black text looks on a background with the CIELCh color 73, 23.364, 34.496.



This preview shows how white text looks on a background with the CIELCh color 73, 23.364, 34.496.

Color Blindness Simulation

Color vision deficiency is a very complex topic, and I could not describe the different causes any better than Wikipedia does, so if you want to learn more, you should check out their [article about color blindness](#).

Dichromacy



Original Color

73, 23.364, 34.496

Protanopia

73, 9.177, 89.514

Deuteranopia

73, 16.532, 56.035



Tritanopia
73, 24.531, 5.229

Trichromacy



Original Color
73, 23.364, 34.496

Protanomaly
73, 12.818, 56.068

Deuteranomaly
73, 18.883, 45.864

Tritanomaly
73, 23.291, 14.952

Monochromacy



Original Color
73, 23.364, 34.496

Achromatopsia
74, 0.009, 296.813

Achromatomaly
74, 8.231, 31.318

CSS Examples

Text

The CSS property to change the color of the text to CIELCh 73, 23.364, 34.496 is called "color". The color property can be set on classes, ids or directly on the HTML element.

This example shows how text in the color `rgb(222, 166, 156)` looks like.

```
.text, #text, p{  
    color:rgb(222, 166, 156)  
}
```

If you want to add a text shadow in that color use the text-shadow property, you can generate a text shadow directly with our [CSS Text Shadow Generator](#).

Here you see how black text with a 4 pixel rgb(222, 166, 156) colored shadow looks like.

```
.shadow{ text-shadow: 4px 4px 2px rgb(222, 166, 156) }
```

Border

The CSS property to change the border of an element to CIELCh 73, 23.364, 34.496 is called "border". The border property can be set on classes, ids or directly on the HTML element.

This example shows the color as border, it can be applied via the CSS property "border" or "border-color".

```
.border, #border, table{ border:4px solid rgb(222, 166, 156) }
```

If only the border color should be changed use the property `border-color`.

```
.border{ border-color:rgb(222, 166, 156) }
```

If you want to add a box shadow in that color use:

Here you see how a box with a 4 pixel `rgb(222, 166, 156)` colored shadow looks like.

```
.boxshadow{ -moz-box-shadow:4px 4px 4px  
4px rgb(222, 166, 156); -webkit-box-  
shadow:4px 4px 4px 4px rgb(222, 166, 156);  
box-shadow:4px 4px 4px 4px rgb(222, 166,  
156) }
```

Background

The CSS property to change the background color of an element to CIELCh 73, 23.364, 34.496 is called "background". The background property can be set on classes, ids or directly on the HTML element.

```
.background, #background, body{  
background: rgb(222, 166, 156) }
```

If only the background color should be changed can be used:

```
.background{ background-color: rgb(222,  
166, 156) }
```

This example shows the color as background, it is applied via the CSS property "background".

To optimize and compress your CSS code, you can use our [online CSS compressor and optimizer](#) based on csstidy. If you want to create a linear or radial gradient as background or border, check our [CSS Gradient Generator](#).

Hey! You found this booklet interesting? Support Converting Colors with the new Membership Option!

The pro membership hides all ads, plus gives you double the colors in the color bucket, and more awesome pro features!

[Learn more, Memberships starting at \\$2.50/m!](#)

**Follow me
on Twitter!**

@ConvertingColor