

Converting Colors

CIELCh(73, 23.497, 52.581)

Have a look what the booklet for
CIELCh(73, 23.497, 52.581) contains.

CIELCh(73, 23.552, 52.250)	3
<i>Conversions</i>	4
<i>Details</i>	6
<i>Harmonies</i>	11
<i>Previews</i>	20
<i>Color Blindness Simulation</i>	23
<i>CSS Examples</i>	26

Color

CIELCh(73, 23.552, 52.250)

Conversions

Conversions Part 1

Format	Color
Hex	D9A992
RGB	217, 169, 146
RGB Percent	85%, 66%, 57%
CMY	0.1493, 0.3375, 0.4277
CMYK	0.00, 0.22, 0.33, 0.15
HSL	19°, 48%, 71%
HSV	19°, 33%, 85%
XYZ	47.9521, 45.1644, 33.3573
YIQ	180.7300, 35.9910, 3.0230

Conversions

Conversions Part 2

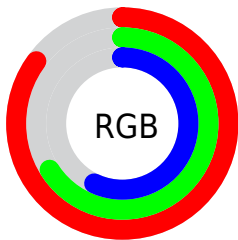
Format	Color
R _Y B	217, 180, 146
Decimal	14264722
CIE Lab	73.00, 14.42, 18.62
CIE LCh	73, 23.552, 52.250
Yxy	45.1644, 0.3791, 0.3571
Android (android.graphics.Color)	4292454802 (0xFFD9A992)
YUV	180.7300, -17.1219, 31.8088
Hunter-Lab	67.2044, 9.7565, 17.6142

Details

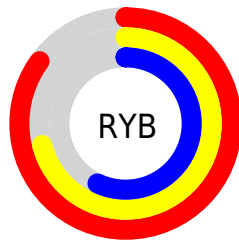
The CIELCh color **73, 23.552, 52.250** is a light color, and the websafe version is hex **CC9999**. A complement of this color would be **76, 19.480, 238.280**, and the grayscale version is **74, 0.009, 296.813**.

A 20% lighter version of the original color is **91, 17.180, 65.782**, and **53, 23.757, 52.836** is the 20% darker color. If you saturate the color by 10%, you get **69, 31.936, 51.728**, and if you desaturate by 10%, it is **77, 15.749, 52.869**.

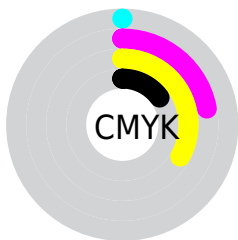
Distribution



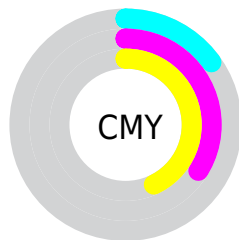
- Red (85%)
- Green (66%)
- Blue (57%)



- Red (85%)
- Yellow (71%)
- Blue (57%)



- Cyan (0%)
- Magenta (22%)
- Yellow (33%)
- Black (15%)



- Cyan (15%)
- Magenta (34%)
- Yellow (43%)


Brightness & Saturation Gradients

These gradients show how the CIELCh color 73, 23.552, 52.250 changes by changing the brightness by 10 percent. The first figure shows a shift by +10% for each color and the second figure -10%.

Similar to the brightness gradients but the following saturation gradients show a change of the CIELCh color 73, 23.552, 52.250 by changing the saturation by 10% instead.

 73, 23.552, 52.250

 73, 23.552, 52.250

 100, 23.552,
52.250

 63, 23.552, 52.250

 93, 23.552, 52.250

 53, 23.552, 52.250

 43, 23.552, 52.250

 33, 23.552, 52.250

 23, 23.552, 52.250

 13, 23.552, 52.250

 3, 23.552, 52.250

 0, 23.552, 52.250

 73, 23.552, 52.250

 73, 23.552, 52.250

69, 31.936, 51.728

77, 15.749, 52.869

65, 40.900, 51.297

81, 8.499, 53.531

62, 50.376, 50.960

86, 1.753, 54.035

58, 60.154, 50.661

90, 4.538, 235.222

55, 69.733, 50.236

94, 10.428,
235.946

53, 78.064, 49.296

97, 12.794,
198.651

51, 82.925, 48.262

Harmonies

Complementary

The Complementary color scheme is a pair of colors which are on the opposite of each other on the color wheel.



73, 23.552, 52.250



76, 19.480, 238.280

Rectangle

The Rectangle color scheme consists of four colors that form a rectangle on the color wheel.



73, 23.552, 52.250



73, 23.552, 102.250



73, 23.552, 232.250



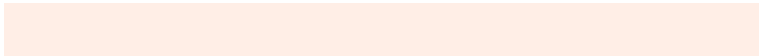
73, 23.552, 282.250

Sweetspot

The Sweet Spot groups the original color and five complimentary colors.



73, 23.551, 52.257



95, 7.541, 53.706



69, 36.881, 337.414



50, 5.172, 53.612



0, 0.000, 0.000



53, 0.007, 296.813

Same Dimension

The Same Dimension uses a secret algorithm to generate beautiful new colors.



73, 23.551, 52.257



82, 32.816, 51.896



82, 30.848, 97.604



44, 3.779, 53.748



41, 69.774, 48.796



8, 19.409, 40.917

Inverse Universe

The Inverse Universe completely reimagines the original color for something new.



76, 19.480, 238.280



85, 25.944, 239.427



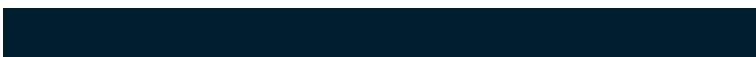
66, 32.224, 286.073



44, 3.603, 235.430



47, 38.070, 260.199



10, 14.045, 249.718

Previews

White Background



This preview shows how the CIELCh color 73, 23.552, 52.250 looks on a white background.

Color Contrast Check

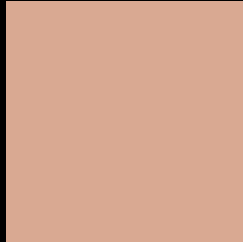
Large Text (above 18pt) WCAG AA × Fail

Any Text WCAG AA × Fail

Large Text (above 18pt) WCAG AAA × Fail

Any Text WCAG AAA × Fail

Black Background



This preview shows how the CIELCh color 73, 23.552, 52.250 looks on a black background.

Color Contrast Check

Large Text (above 18pt) WCAG AA ✓ Pass

Any Text WCAG AA ✓ Pass

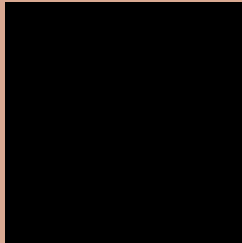
Large Text (above 18pt) WCAG AAA ✓ Pass

Any Text WCAG AAA ✓ Pass

If you want to check with other color combinations, try the [Color Contrast Checker](#).

CIELCh 73, 23.552, 52.250

Background



This preview shows how black text looks on a background with the CIELCh color 73, 23.552, 52.250.



This preview shows how white text looks on a background with the CIELCh color 73, 23.552, 52.250.

Color Blindness Simulation

Color vision deficiency is a very complex topic, and I could not describe the different causes any better than Wikipedia does, so if you want to learn more, you should check out their [article about color blindness](#).

Dichromacy



Original Color

73, 23.552, 52.250

Protanopia

73, 15.629, 93.913

Deuteranopia

73, 21.229, 63.235



Tritanopia
73, 22.630, 3.568

Trichromacy



Original Color
73, 23.552, 52.250

Protanomaly
73, 17.148, 74.389

Deuteranomaly
73, 22.139, 59.405

Tritanomaly
73, 20.933, 21.256

Monochromacy



Original Color
73, 23.552, 52.250

Achromatopsia
74, 0.009, 296.813

Achromatomaly
73, 8.185, 56.126

CSS Examples

Text

The CSS property to change the color of the text to CIELCh 73, 23.552, 52.250 is called "color". The color property can be set on classes, ids or directly on the HTML element.

This example shows how text in the color `rgb(217, 169, 146)` looks like.

```
.text, #text, p{  
    color:rgb(217, 169, 146)  
}
```

If you want to add a text shadow in that color use the text-shadow property, you can generate a text shadow directly with our [CSS Text Shadow Generator](#).

Here you see how black text with a 4 pixel rgb(217, 169, 146) colored shadow looks like.

```
.shadow{ text-shadow: 4px 4px 2px rgb(217, 169, 146) }
```

Border

The CSS property to change the border of an element to CIELCh 73, 23.552, 52.250 is called "border". The border property can be set on classes, ids or directly on the HTML element.

This example shows the color as border, it can be applied via the CSS property "border" or "border-color".

```
.border, #border, table{ border:4px solid rgb(217, 169, 146) }
```

If only the border color should be changed use the property `border-color`.

```
.border{ border-color:rgb(217, 169, 146) }
```

If you want to add a box shadow in that color use:

Here you see how a box with a 4 pixel `rgb(217, 169, 146)` colored shadow looks like.

```
.boxshadow{ -moz-box-shadow:4px 4px 4px  
4px rgb(217, 169, 146); -webkit-box-  
shadow:4px 4px 4px 4px rgb(217, 169, 146);  
box-shadow:4px 4px 4px 4px rgb(217, 169,  
146) }
```

Background

The CSS property to change the background color of an element to CIELCh 73, 23.552, 52.250 is called "background". The background property can be set on classes, ids or directly on the HTML element.

```
.background, #background, body{  
background: rgb(217, 169, 146) }
```

If only the background color should be changed can be used:

```
.background{ background-color: rgb(217,  
169, 146) }
```

This example shows the color as background, it is applied via the CSS property "background".

To optimize and compress your CSS code, you can use our [online CSS compressor and optimizer](#) based on csstidy. If you want to create a linear or radial gradient as background or border, check our [CSS Gradient Generator](#).

Hey! You found this booklet interesting? Support Converting Colors with the new Membership Option!

The pro membership hides all ads, plus gives you double the colors in the color bucket, and more awesome pro features!

[Learn more, Memberships starting at \\$2.50/m!](#)

**Follow me
on Twitter!**

@ConvertingColor