

Converting Colors

CIELCh(73, 25.131, 68.257)

Have a look what the booklet for
CIELCh(73, 25.131, 68.257) contains.

CIELCh(73, 25.164, 68.238)	3
<i>Conversions</i>	4
<i>Details</i>	6
<i>Harmonies</i>	11
<i>Previews</i>	20
<i>Color Blindness Simulation</i>	23
<i>CSS Examples</i>	26

Color

CIELCh(73, 25.164, 68.238)

Conversions

Conversions Part 1

Format	Color
Hex	D3AC89
RGB	211, 172, 137
RGB Percent	83%, 67%, 54%
CMY	0.1725, 0.3254, 0.4627
CMYK	0.00, 0.18, 0.35, 0.17
HSL	28°, 46%, 68%
HSV	28°, 35%, 83%
XYZ	46.1361, 45.1644, 29.9556
YIQ	179.6710, 34.4790, -2.6170

Conversions

Conversions Part 2

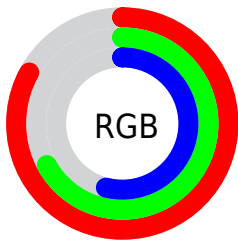
Format	Color
R_{YB}	211, 203, 137
Decimal	13872265
CIE _{Lab}	73.00, 9.33, 23.37
CIE _{LCh}	73, 25.164, 68.238
Yxy	45.1644, 0.3805, 0.3725
Android (android.graphics.Color)	4292062345 (0xFFD3AC89)
YUV	179.6710, -21.0368, 27.4755
Hunter-Lab	67.2044, 4.9332, 20.6153

Details

The CIELCh color **73, 25.164, 68.238** is a light color, and the websafe version is hex **CC9966**. A complement of this color would be **70, 22.413, 258.107**, and the grayscale version is **73, 0.009, 296.813**.

A 20% lighter version of the original color is **92, 21.539, 78.584**, and **53, 25.078, 68.566** is the 20% darker color. If you saturate the color by 10%, you get **70, 33.189, 67.049**, and if you desaturate by 10%, it is **76, 17.523, 69.439**.

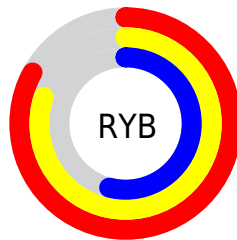
Distribution



Red (83%)

Green (67%)

Blue (54%)



Red (83%)

Yellow (80%)

Blue (54%)

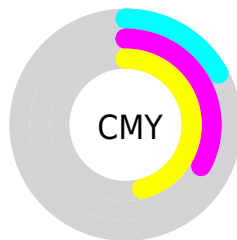


Cyan (0%)

Magenta (18%)

Yellow (35%)

Black (17%)



Cyan (17%)

Magenta (33%)

Yellow (46%)


Brightness & Saturation Gradients

These gradients show how the CIELCh color 73, 25.164, 68.238 changes by changing the brightness by 10 percent. The first figure shows a shift by +10% for each color and the second figure -10%.

Similar to the brightness gradients but the following saturation gradients show a change of the CIELCh color 73, 25.164, 68.238 by changing the saturation by 10% instead.

 73, 25.164, 68.238

 73, 25.164, 68.238

 100, 25.164,
68.238

 63, 25.164, 68.238

 93, 25.164, 68.238

 53, 25.164, 68.238

 43, 25.164, 68.238

 33, 25.164, 68.238

 23, 25.164, 68.238

 13, 25.164, 68.238

 3, 25.164, 68.238

 0, 25.164, 68.238

 73, 25.164, 68.238

 73, 25.164, 68.238

70, 33.189, 67.049

76, 17.523, 69.439

67, 41.554, 65.848

80, 10.263, 70.621

64, 50.129, 64.611

83, 3.363, 71.728

61, 58.613, 63.258

86, 3.208, 253.143

59, 66.390, 61.606

90, 9.485, 254.201

56, 72.448, 59.313

93, 12.307,
242.198

55, 74.930, 58.062

96, 13.152,
210.296

97, 14.681,
198.527

Harmonies

Complementary

The Complementary color scheme is a pair of colors which are on the opposite of each other on the color wheel.



73, 25.164, 68.238



70, 22.413, 258.107

Rectangle

The Rectangle color scheme consists of four colors that form a rectangle on the color wheel.



73, 25.164, 68.238



73, 25.164, 118.238



73, 25.164, 248.238



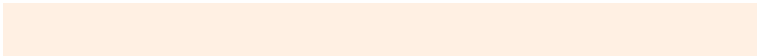
73, 25.164, 298.238

Sweetspot

The Sweet Spot groups the original color and five complimentary colors.



73, 25.164, 68.245



96, 8.647, 71.077



66, 35.053, 345.131



50, 5.831, 70.920



0, 0.000, 0.000



53, 0.007, 296.813

Same Dimension

The Same Dimension uses a secret algorithm to generate beautiful new colors.



73, 25.164, 68.245



84, 35.825, 67.361



82, 37.172, 105.328



42, 3.780, 71.271



44, 63.079, 58.709



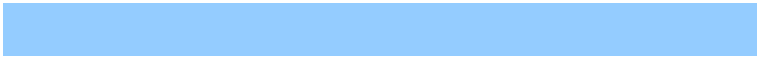
9, 15.730, 55.289

Inverse Universe

The Inverse Universe completely reimagines the original color for something new.



70, 22.413, 258.107



80, 31.037, 259.817



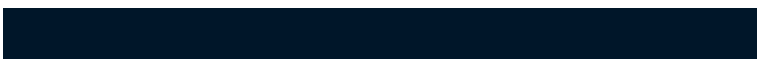
60, 40.353, 293.426



42, 3.683, 253.696



38, 49.771, 280.940



6, 15.624, 269.391

Previews

White Background



This preview shows how the CIELCh color 73, 25.164, 68.238 looks on a white background.

Color Contrast Check

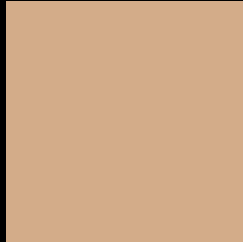
Large Text (above 18pt) WCAG AA × Fail

Any Text WCAG AA × Fail

Large Text (above 18pt) WCAG AAA × Fail

Any Text WCAG AAA × Fail

Black Background



This preview shows how the CIELCh color 73, 25.164, 68.238 looks on a black background.

Color Contrast Check

Large Text (above 18pt) WCAG AA ✓ Pass

Any Text WCAG AA ✓ Pass

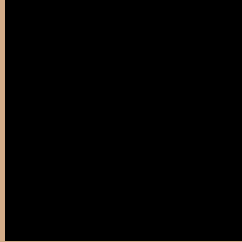
Large Text (above 18pt) WCAG AAA ✓ Pass

Any Text WCAG AAA ✓ Pass

If you want to check with other color combinations, try the [Color Contrast Checker](#).

CIELCh 73, 25.164, 68.238

Background



This preview shows how black text looks on a background with the CIELCh color 73, 25.164, 68.238.



This preview shows how white text looks on a background with the CIELCh color 73, 25.164, 68.238.

Color Blindness Simulation

Color vision deficiency is a very complex topic, and I could not describe the different causes any better than Wikipedia does, so if you want to learn more, you should check out their [article about color blindness](#).

Dichromacy



Original Color

73, 25.164, 68.238

Protanopia

73, 21.579, 95.020

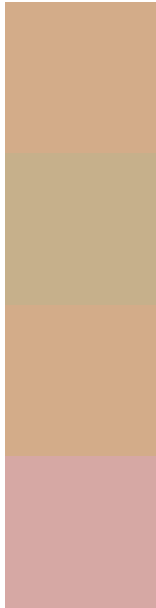
Deuteranopia

73, 25.164, 68.238



Tritanopia
73, 20.001, 0.794

Trichromacy



Original Color
73, 25.164, 68.238

Protanomaly
73, 21.998, 83.962

Deuteranomaly
73, 25.164, 68.238

Tritanomaly
73, 18.366, 27.650

Monochromacy



Original Color
73, 25.164, 68.238

Achromatopsia
73, 0.009, 296.813

Achromatomaly
73, 8.895, 71.667

CSS Examples

Text

The CSS property to change the color of the text to CIELCh 73, 25.164, 68.238 is called "color". The color property can be set on classes, ids or directly on the HTML element.

This example shows how text in the color `rgb(211, 172, 137)` looks like.

```
.text, #text, p{  
    color:rgb(211, 172, 137)  
}
```

If you want to add a text shadow in that color use the text-shadow property, you can generate a text shadow directly with our [CSS Text Shadow Generator](#).

Here you see how black text with a 4 pixel rgb(211, 172, 137) colored shadow looks like.

```
.shadow{ text-shadow: 4px 4px 2px rgb(211, 172, 137) }
```

Border

The CSS property to change the border of an element to CIELCh 73, 25.164, 68.238 is called "border". The border property can be set on classes, ids or directly on the HTML element.

This example shows the color as border, it can be applied via the CSS property "border" or "border-color".

```
.border, #border, table{ border:4px solid rgb(211, 172, 137) }
```

If only the border color should be changed use the property `border-color`.

```
.border{ border-color:rgb(211, 172, 137) }
```

If you want to add a box shadow in that color use:

Here you see how a box with a 4 pixel `rgb(211, 172, 137)` colored shadow looks like.

```
.boxshadow{ -moz-box-shadow:4px 4px 4px  
4px rgb(211, 172, 137); -webkit-box-  
shadow:4px 4px 4px 4px rgb(211, 172, 137);  
box-shadow:4px 4px 4px 4px rgb(211, 172,  
137) }
```

Background

The CSS property to change the background color of an element to CIELCh 73, 25.164, 68.238 is called "background". The background property can be set on classes, ids or directly on the HTML element.

```
.background, #background, body{  
background: rgb(211, 172, 137) }
```

If only the background color should be changed can be used:

```
.background{ background-color: rgb(211,  
172, 137) }
```

This example shows the color as background, it is applied via the CSS property "background".

To optimize and compress your CSS code, you can use our [online CSS compressor and optimizer](#) based on csstidy. If you want to create a linear or radial gradient as background or border, check our [CSS Gradient Generator](#).

Hey! You found this booklet interesting? Support Converting Colors with the new Membership Option!

The pro membership hides all ads, plus gives you double the colors in the color bucket, and more awesome pro features!

[Learn more, Memberships starting at \\$2.50/m!](#)

**Follow me
on Twitter!**

@ConvertingColor