

Converting Colors

CIELCh(73, 25.818, 11.099)

Have a look what the booklet for
CIELCh(73, 25.818, 11.099) contains.

CIELCh(73, 25.818, 11.099)	3
<i>Conversions</i>	4
<i>Details</i>	6
<i>Harmonies</i>	11
<i>Previews</i>	20
<i>Color Blindness Simulation</i>	23
<i>CSS Examples</i>	26

Color

CIELCh(73, 25.818, 11.099)

Conversions

Conversions Part 1

Format	Color
Hex	E3A2AB
RGB	227, 162, 171
RGB Percent	89%, 64%, 67%
CMY	0.1094, 0.3643, 0.3290
CMYK	0.00, 0.29, 0.25, 0.11
HSL	352°, 54%, 76%
HSV	352°, 29%, 89%
XYZ	52.0065, 45.1644, 44.5511
YIQ	182.4610, 35.8510, 16.5790

Conversions

Conversions Part 2

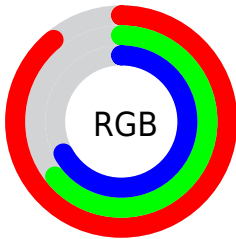
Format	Color
R _Y B	227, 162, 171
Decimal	14918315
CIE Lab	73.00, 25.34, 4.97
CIE LCh	73, 25.818, 11.099
Yxy	45.1644, 0.3670, 0.3187
Android (android.graphics.Color)	4293108395 (0xFFE3A2AB)
YUV	182.4610, -5.6503, 39.0607
Hunter-Lab	67.2044, 20.5253, 7.7387

Details

The CIELCh color **73, 25.818, 11.099** is a light color, and the websafe version is hex **CC9999**. A complement of this color would be **86, 22.385, 185.637**, and the grayscale version is **74, 0.009, 296.813**.

A 20% lighter version of the original color is **90, 14.618, 1.937**, and **53, 25.553, 11.116** is the 20% darker color. If you saturate the color by 10%, you get **67, 35.688, 12.673**, and if you desaturate by 10%, it is **79, 16.333, 9.826**.

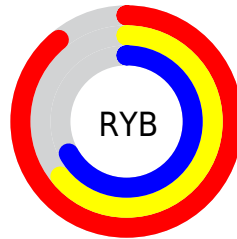
Distribution



Red (89%)

Green (64%)

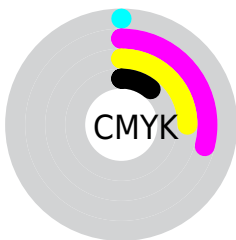
Blue (67%)



Red (89%)

Yellow (64%)

Blue (67%)

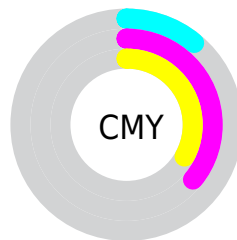


Cyan (0%)

Magenta (29%)

Yellow (25%)

Black (11%)



Cyan (11%)

Magenta (36%)

Yellow (33%)

Brightness & Saturation Gradients

These gradients show how the CIELCh color 73, 25.818, 11.099 changes by changing the brightness by 10 percent. The first figure shows a shift by +10% for each color and the second figure -10%.

Similar to the brightness gradients but the following saturation gradients show a change of the CIELCh color 73, 25.818, 11.099 by changing the saturation by 10% instead.

73, 25.818, 11.099

73, 25.818, 11.099

100, 25.818,
11.099

63, 25.818, 11.099

93, 25.818, 11.099

53, 25.818, 11.099

43, 25.818, 11.099

33, 25.818, 11.099

23, 25.818, 11.099

13, 25.818, 11.099

3, 25.818, 11.099

0, 25.818, 11.099

73, 25.818, 11.099

73, 25.818, 11.099

67, 35.688, 12.673

79, 16.333, 9.826

62, 45.764, 14.641

85, 7.339, 8.743

58, 55.755, 17.138

91, 1.132, 188.462

54, 65.307, 20.307

97, 9.087, 187.273

51, 74.078, 24.250

98, 9.481, 198.876

49, 81.844, 28.905

48, 88.481, 33.776

48, 89.344, 34.367

Harmonies

Complementary

The Complementary color scheme is a pair of colors which are on the opposite of each other on the color wheel.



73, 25.818, 11.099



86, 22.385, 185.637

Rectangle

The Rectangle color scheme consists of four colors that form a rectangle on the color wheel.



73, 25.818, 11.099



73, 25.818, 61.099



73, 25.818, 191.099



73, 25.818, 241.099

Sweetspot

The Sweet Spot groups the original color and five complimentary colors.



73, 25.816, 11.103



94, 8.426, 8.788



74, 40.045, 321.604



49, 5.881, 8.940



0, 0.000, 0.000



53, 0.007, 296.813

Same Dimension

The Same Dimension uses a secret algorithm to generate beautiful new colors.



73, 25.816, 11.103



78, 34.166, 11.939



78, 20.993, 55.399



45, 4.888, 8.830



37, 73.965, 33.546



6, 26.746, 16.008

Inverse Universe

The Inverse Universe completely reimagines the original color for something new.



73, 25.816, 11.103



78, 34.166, 11.939



80, 18.022, 241.201



45, 4.888, 8.830



37, 73.965, 33.546



6, 26.746, 16.008

Previews

White Background



This preview shows how the CIELCh color 73, 25.818, 11.099 looks on a white background.

Color Contrast Check

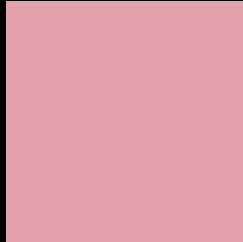
Large Text (above 18pt) WCAG AA × Fail

Any Text WCAG AA × Fail

Large Text (above 18pt) WCAG AAA × Fail

Any Text WCAG AAA × Fail

Black Background



This preview shows how the CIE LCh color 73, 25.818, 11.099 looks on a black background.

Color Contrast Check

Large Text (above 18pt) WCAG AA ✓ Pass

Any Text WCAG AA ✓ Pass

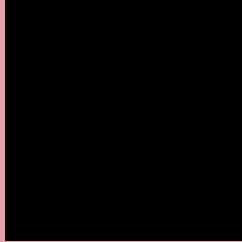
Large Text (above 18pt) WCAG AAA ✓ Pass

Any Text WCAG AAA ✓ Pass

If you want to check with other color combinations, try the [Color Contrast Checker](#).

CIELCh 73, 25.818, 11.099

Background



This preview shows how black text looks on a background with the CIELCh color 73, 25.818, 11.099.



This preview shows how white text looks on a background with the CIELCh color 73, 25.818, 11.099.

Color Blindness Simulation

Color vision deficiency is a very complex topic, and I could not describe the different causes any better than Wikipedia does, so if you want to learn more, you should check out their [article about color blindness](#).

Dichromacy



Original Color


73, 25.818, 11.099

Protanopia

73, 1.255, 353.494

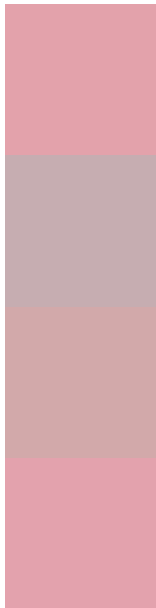
Deuteranopia

73, 11.106, 31.436



Tritanopia
73, 25.991, 7.575

Trichromacy



Original Color
73, 25.818, 11.099

Protanomaly
73, 9.778, 7.468

Deuteranomaly
73, 15.995, 18.869

Tritanomaly
73, 25.922, 8.744

Monochromacy



Original Color
73, 25.818, 11.099

Achromatopsia
74, 0.009, 296.813

Achromatomaly
74, 9.380, 6.892

CSS Examples

Text

The CSS property to change the color of the text to CIELCh 73, 25.818, 11.099 is called "color". The color property can be set on classes, ids or directly on the HTML element.

This example shows how text in the color `rgb(227, 162, 171)` looks like.

```
.text, #text, p{  
    color:rgb(227, 162, 171)  
}
```

If you want to add a text shadow in that color use the text-shadow property, you can generate a text shadow directly with our [CSS Text Shadow Generator](#).

Here you see how black text with a 4 pixel rgb(227, 162, 171) colored shadow looks like.

```
.shadow{ text-shadow: 4px 4px 2px rgb(227, 162, 171) }
```

Border

The CSS property to change the border of an element to CIELCh 73, 25.818, 11.099 is called "border". The border property can be set on classes, ids or directly on the HTML element.

This example shows the color as border, it can be applied via the CSS property "border" or "border-color".

```
.border, #border, table{ border:4px solid rgb(227, 162, 171) }
```

If only the border color should be changed use the property border-color.

```
.border{ border-color:rgb(227, 162, 171) }
```

If you want to add a box shadow in that color use:

Here you see how a box with a 4 pixel rgb(227, 162, 171) colored shadow looks like.

```
.boxshadow{ -moz-box-shadow:4px 4px 4px  
4px rgb(227, 162, 171); -webkit-box-  
shadow:4px 4px 4px 4px rgb(227, 162, 171);  
box-shadow:4px 4px 4px 4px rgb(227, 162,  
171) }
```

Background

The CSS property to change the background color of an element to CIELCh 73, 25.818, 11.099 is called "background". The background property can be set on classes, ids or directly on the HTML element.

```
.background, #background, body{  
background: rgb(227, 162, 171) }
```

If only the background color should be changed can be used:

```
.background{ background-color: rgb(227,  
162, 171) }
```

This example shows the color as background, it is applied via the CSS property "background".

To optimize and compress your CSS code, you can use our [online CSS compressor and optimizer](#) based on csstidy. If you want to create a linear or radial gradient as background or border, check our [CSS Gradient Generator](#).

Hey! You found this booklet interesting? Support Converting Colors with the new Membership Option!

The pro membership hides all ads, plus gives you double the colors in the color bucket, and more awesome pro features!

[Learn more, Memberships starting at \\$2.50/m!](#)

**Follow me
on Twitter!**

@ConvertingColor