

Converting Colors

CIELCh(73, 30.478, 72.035)

Have a look what the booklet for
CIELCh(73, 30.478, 72.035) contains.

CIELCh(73, 30.421, 72.084)	3
<i>Conversions</i>	4
<i>Details</i>	6
<i>Harmonies</i>	11
<i>Previews</i>	20
<i>Color Blindness Simulation</i>	23
<i>CSS Examples</i>	26

Color

CIELCh(73, 30.421, 72.084)

Conversions

Conversions Part 1

Format	Color
Hex	D6AC7F
RGB	214, 172, 127
RGB Percent	84%, 67%, 50%
CMY	0.1620, 0.3266, 0.5031
CMYK	0.00, 0.20, 0.41, 0.16
HSL	31°, 51%, 67%
HSV	31°, 41%, 84%
XYZ	46.1462, 45.1644, 26.2666
YIQ	179.4280, 39.4770, -5.0910

Conversions

Conversions Part 2

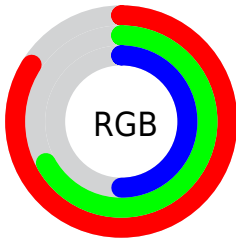
Format	Color
RYB	208, 214, 127
Decimal	14068863
CIELab	73.00, 9.36, 28.95
CIElCh	73, 30.421, 72.084
Yxy	45.1644, 0.3925, 0.3841
Android (android.graphics.Color)	4292258943 (0xFFD6AC7F)
YUV	179.4280, -25.8470, 30.3196
Hunter-Lab	67.2044, 4.9600, 23.8699

Details

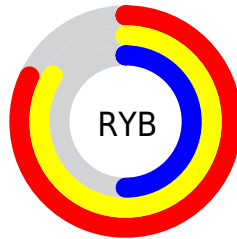
The CIELCh color **73, 30.421, 72.084** is a light color, and the websafe version is hex **CC9966**. A complement of this color would be **68, 27.429, 264.391**, and the grayscale version is **73, 0.009, 296.813**.

A 20% lighter version of the original color is **91, 26.655, 83.915**, and **53, 30.709, 72.161** is the 20% darker color. If you saturate the color by 10%, you get **70, 38.689, 70.771**, and if you desaturate by 10%, it is **76, 22.447, 73.387**.

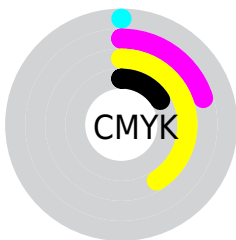
Distribution



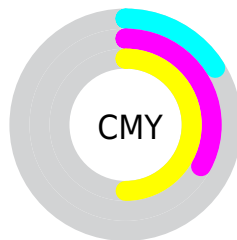
- Red (84%)
- Green (67%)
- Blue (50%)



- Red (82%)
- Yellow (84%)
- Blue (50%)



- Cyan (0%)
- Magenta (20%)
- Yellow (41%)
- Black (16%)



- Cyan (16%)
- Magenta (33%)
- Yellow (50%)

Brightness & Saturation Gradients

These gradients show how the CIELCh color 73, 30.421, 72.084 changes by changing the brightness by 10 percent. The first figure shows a shift by +10% for each color and the second figure -10%.

Similar to the brightness gradients but the following saturation gradients show a change of the CIELCh color 73, 30.421, 72.084 by changing the saturation by 10% instead.

 73, 30.421, 72.084

 73, 30.421, 72.084

 100, 30.421,
72.084

 63, 30.421, 72.084

 93, 30.421, 72.084

 53, 30.421, 72.084

 43, 30.421, 72.084

 33, 30.421, 72.084

 23, 30.421, 72.084

 13, 30.421, 72.084

 3, 30.421, 72.084

 0, 30.421, 72.084

 73, 30.421, 72.084

 73, 30.421, 72.084

70, 38.689, 70.771

76, 22.447, 73.387

67, 47.148, 69.413

79, 14.802, 74.664

65, 55.556, 67.963

82, 7.483, 75.904

62, 63.425, 66.294

85, 0.471, 76.401

60, 69.905, 64.160

88, 6.260, 258.454

58, 74.222, 61.648

92, 12.738,
259.589

94, 11.473,
228.849

97, 13.565,
200.310

97, 13.833,
198.583

Harmonies

Complementary

The Complementary color scheme is a pair of colors which are on the opposite of each other on the color wheel.



73, 30.421, 72.084



68, 27.429, 264.391

Rectangle

The Rectangle color scheme consists of four colors that form a rectangle on the color wheel.



73, 30.421, 72.084



73, 30.421, 122.084



73, 30.421, 252.084



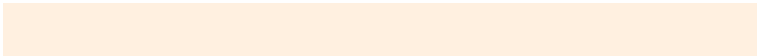
73, 30.421, 302.084

Sweetspot

The Sweet Spot groups the original color and five complimentary colors.



73, 30.421, 72.090



96, 9.718, 75.731



64, 39.862, 348.723



50, 6.465, 75.570



0, 0.000, 0.000



53, 0.007, 296.813

Same Dimension

The Same Dimension uses a secret algorithm to generate beautiful new colors.



73, 30.421, 72.090



83, 43.058, 70.931



84, 44.677, 107.034



43, 3.966, 76.056



47, 62.651, 62.274



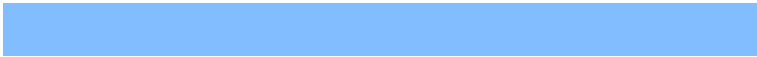
10, 17.053, 61.342

Inverse Universe

The Inverse Universe completely reimagines the original color for something new.



68, 27.429, 264.391



75, 37.907, 266.683



57, 49.666, 296.161



43, 3.890, 258.571



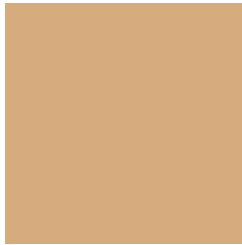
36, 55.054, 285.452



6, 17.628, 274.523

Previews

White Background



This preview shows how the CIELCh color 73, 30.421, 72.084 looks on a white background.

Color Contrast Check

Large Text (above 18pt) WCAG AA × Fail

Any Text WCAG AA × Fail

Large Text (above 18pt) WCAG AAA × Fail

Any Text WCAG AAA × Fail

Black Background



This preview shows how the CIELCh color 73, 30.421, 72.084 looks on a black background.

Color Contrast Check

Large Text (above 18pt) WCAG AA ✓ Pass

Any Text WCAG AA ✓ Pass

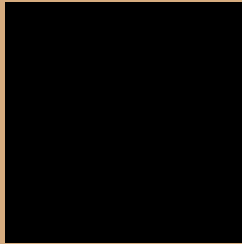
Large Text (above 18pt) WCAG AAA ✓ Pass

Any Text WCAG AAA ✓ Pass

If you want to check with other color combinations, try the [Color Contrast Checker](#).

CIELCh 73, 30.421, 72.084

Background



This preview shows how black text looks on a background with the CIELCh color 73, 30.421, 72.084.



This preview shows how white text looks on a background with the CIELCh color 73, 30.421, 72.084.

Color Blindness Simulation

Color vision deficiency is a very complex topic, and I could not describe the different causes any better than Wikipedia does, so if you want to learn more, you should check out their [article about color blindness](#).

Dichromacy



Original Color

73, 30.421, 72.084

Protanopia

73, 26.980, 95.158

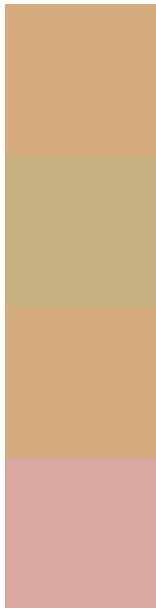
Deuteranopia

73, 30.158, 72.724



Tritanopia
73, 21.862, 2.827

Trichromacy



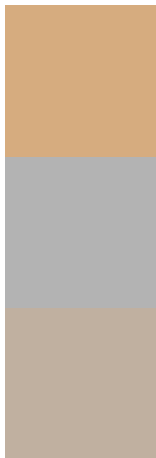
Original Color
73, 30.421, 72.084

Protanomaly
73, 27.502, 85.338

Deuteranomaly
73, 30.158, 72.724

Tritanomaly
73, 20.562, 33.089

Monochromacy



Original Color
73, 30.421, 72.084

Achromatopsia
73, 0.009, 296.813

Achromatomaly
73, 10.710, 73.359

CSS Examples

Text

The CSS property to change the color of the text to CIELCh 73, 30.421, 72.084 is called "color". The color property can be set on classes, ids or directly on the HTML element.

This example shows how text in the color `rgb(214, 172, 127)` looks like.

```
.text, #text, p{  
    color:rgb(214, 172, 127)  
}
```

If you want to add a text shadow in that color use the text-shadow property, you can generate a text shadow directly with our [CSS Text Shadow Generator](#).

Here you see how black text with a 4 pixel rgb(214, 172, 127) colored shadow looks like.

```
.shadow{ text-shadow: 4px 4px 2px rgb(214, 172, 127) }
```

Border

The CSS property to change the border of an element to CIELCh 73, 30.421, 72.084 is called "border". The border property can be set on classes, ids or directly on the HTML element.

This example shows the color as border, it can be applied via the CSS property "border" or "border-color".

```
.border, #border, table{ border:4px solid rgb(214, 172, 127) }
```

If only the border color should be changed use the property border-color.

```
.border{ border-color:rgb(214, 172, 127) }
```

If you want to add a box shadow in that color use:

Here you see how a box with a 4 pixel rgb(214, 172, 127) colored shadow looks like.

```
.boxshadow{ -moz-box-shadow:4px 4px 4px  
4px rgb(214, 172, 127); -webkit-box-  
shadow:4px 4px 4px 4px rgb(214, 172, 127);  
box-shadow:4px 4px 4px 4px rgb(214, 172,  
127) }
```

Background

The CSS property to change the background color of an element to CIELCh 73, 30.421, 72.084 is called "background". The background property can be set on classes, ids or directly on the HTML element.

```
.background, #background, body{  
background: rgb(214, 172, 127) }
```

If only the background color should be changed can be used:

```
.background{ background-color: rgb(214,  
172, 127) }
```

This example shows the color as background, it is applied via the CSS property "background".

To optimize and compress your CSS code, you can use our [online CSS compressor and optimizer](#) based on csstidy. If you want to create a linear or radial gradient as background or border, check our [CSS Gradient Generator](#).

Hey! You found this booklet interesting? Support Converting Colors with the new Membership Option!

The pro membership hides all ads, plus gives you double the colors in the color bucket, and more awesome pro features!

[Learn more, Memberships starting at \\$2.50/m!](#)

**Follow me
on Twitter!**

@ConvertingColor