

Converting Colors

CIELCh(73, 33.955, 11.914)

Have a look what the booklet for
CIELCh(73, 33.955, 11.914) contains.

CIELCh(73, 33.955, 11.914)	3
<i>Conversions</i>	4
<i>Details</i>	6
<i>Harmonies</i>	11
<i>Previews</i>	20
<i>Color Blindness Simulation</i>	23
<i>CSS Examples</i>	26

Color

CIELCh(73, 33.955, 11.914)

Conversions

Conversions Part 1

Format	Color
Hex	F19CA8
RGB	241, 156, 168
RGB Percent	95%, 61%, 66%
CMY	0.0560, 0.3892, 0.3421
CMYK	0.00, 0.35, 0.30, 0.06
HSL	352°, 75%, 78%
HSV	352°, 35%, 94%
XYZ	55.0744, 45.1644, 42.7401
YIQ	182.7830, 46.8080, 21.7520

Conversions

Conversions Part 2

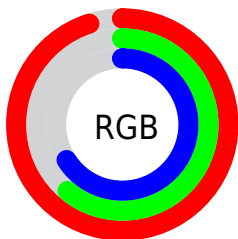
Format	Color
R _Y B	241, 156, 168
Decimal	15834280
CIE Lab	73.00, 33.22, 7.01
CIE LCh	73, 33.955, 11.914
Yxy	45.1644, 0.3852, 0.3159
Android (android.graphics.Color)	4294024360 (0xFFFF19CA8)
YUV	182.7830, -7.2880, 51.0563
Hunter-Lab	67.2044, 28.6739, 9.3363

Details

The CIELCh color **73, 33.955, 11.914** is a light color, and the websafe version is hex **FF9999**. A complement of this color would be **90, 28.389, 184.773**, and the grayscale version is **74, 0.009, 296.813**.

A 20% lighter version of the original color is **89, 17.258, 359.608**, and **53, 33.736, 12.367** is the 20% darker color. If you saturate the color by 10%, you get **67, 44.465, 13.752**, and if you desaturate by 10%, it is **79, 23.721, 10.446**.

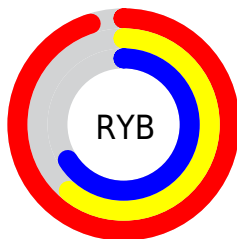
Distribution



Red (95%)

Green (61%)

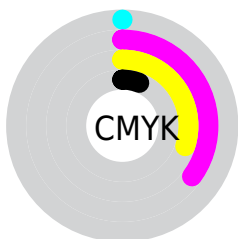
Blue (66%)



Red (95%)

Yellow (61%)

Blue (66%)

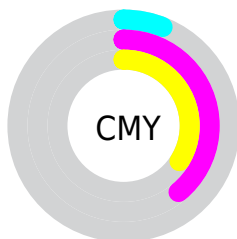


Cyan (0%)

Magenta (35%)

Yellow (30%)

Black (6%)



Cyan (6%)

Magenta (39%)

Yellow (34%)

Brightness & Saturation Gradients

These gradients show how the CIELCh color 73, 33.955, 11.914 changes by changing the brightness by 10 percent. The first figure shows a shift by +10% for each color and the second figure -10%.

Similar to the brightness gradients but the following saturation gradients show a change of the CIELCh color 73, 33.955, 11.914 by changing the saturation by 10% instead.

73, 33.955, 11.914

73, 33.955, 11.914

100, 33.955,
11.914

63, 33.955, 11.914

93, 33.955, 11.914

53, 33.955, 11.914

43, 33.955, 11.914

33, 33.955, 11.914

23, 33.955, 11.914

13, 33.955, 11.914

3, 33.955, 11.914

0, 33.955, 11.914

73, 33.955, 11.914

73, 33.955, 11.914

67, 44.465, 13.752

79, 23.721, 10.446

62, 54.988, 16.075

85, 13.938, 9.238

58, 65.161, 19.029

92, 4.683, 8.167

55, 74.606, 22.741

98, 4.023, 187.616

52, 83.045, 27.224

99, 4.915, 199.229

51, 90.309, 32.185

50, 93.364, 34.369

Harmonies

Complementary

The Complementary color scheme is a pair of colors which are on the opposite of each other on the color wheel.



73, 33.955, 11.914



90, 28.389, 184.773

Rectangle

The Rectangle color scheme consists of four colors that form a rectangle on the color wheel.



73, 33.955, 11.914



73, 33.955, 61.914



73, 33.955, 191.914



73, 33.955, 241.914

Sweetspot

The Sweet Spot groups the original color and five complimentary colors.



73, 33.952, 11.917



93, 10.368, 8.779



74, 51.734, 321.906



48, 6.995, 8.923



0, 0.000, 0.000



53, 0.007, 296.813

Same Dimension

The Same Dimension uses a secret algorithm to generate beautiful new colors.



73, 33.952, 11.917



73, 42.952, 13.125



80, 27.821, 54.912



47, 5.070, 8.615



38, 75.476, 33.481



8, 29.190, 18.052

Inverse Universe

The Inverse Universe completely reimagines the original color for something new.



73, 33.952, 11.917



73, 42.952, 13.125



82, 22.901, 242.365



47, 5.070, 8.615



38, 75.476, 33.481



8, 29.190, 18.052

Previews

White Background



This preview shows how the CIELCh color 73, 33.955, 11.914 looks on a white background.

Color Contrast Check

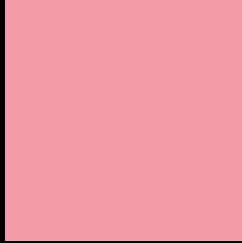
Large Text (above 18pt) WCAG AA × Fail

Any Text WCAG AA × Fail

Large Text (above 18pt) WCAG AAA × Fail

Any Text WCAG AAA × Fail

Black Background



This preview shows how the CIELCh color 73, 33.955, 11.914 looks on a black background.

Color Contrast Check

Large Text (above 18pt) WCAG AA ✓ Pass

Any Text WCAG AA ✓ Pass

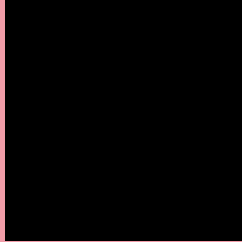
Large Text (above 18pt) WCAG AAA ✓ Pass

Any Text WCAG AAA ✓ Pass

If you want to check with other color combinations, try the [Color Contrast Checker](#).

CIELCh 73, 33.955, 11.914

Background



This preview shows how black text looks on a background with the CIELCh color 73, 33.955, 11.914.

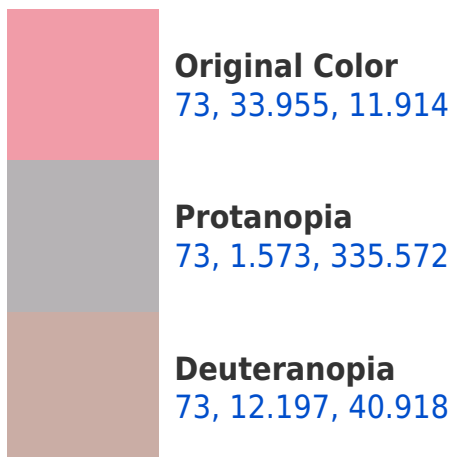


This preview shows how white text looks on a background with the CIELCh color 73, 33.955, 11.914.

Color Blindness Simulation

Color vision deficiency is a very complex topic, and I could not describe the different causes any better than Wikipedia does, so if you want to learn more, you should check out their [article about color blindness](#).

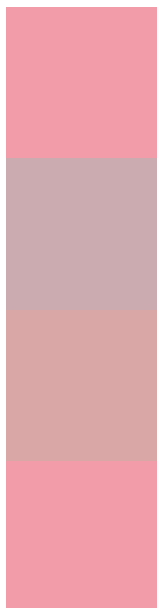
Dichromacy





Tritanopia
73, 33.955, 11.914

Trichromacy



Original Color
73, 33.955, 11.914

Protanomaly
73, 12.559, 8.103

Deuteranomaly
73, 19.345, 22.677

Tritanomaly
73, 33.955, 11.914

Monochromacy



Original Color
73, 33.955, 11.914

Achromatopsia
74, 0.009, 296.813

Achromatomaly
73, 12.067, 10.160

CSS Examples

Text

The CSS property to change the color of the text to CIELCh 73, 33.955, 11.914 is called "color". The color property can be set on classes, ids or directly on the HTML element.

This example shows how text in the color `rgb(241, 156, 168)` looks like.

```
.text, #text, p{  
    color:rgb(241, 156, 168)  
}
```

If you want to add a text shadow in that color use the text-shadow property, you can generate a text shadow directly with our [CSS Text Shadow Generator](#).

Here you see how black text with a 4 pixel rgb(241, 156, 168) colored shadow looks like.

```
.shadow{ text-shadow: 4px 4px 2px rgb(241, 156, 168) }
```

Border

The CSS property to change the border of an element to CIELCh 73, 33.955, 11.914 is called "border". The border property can be set on classes, ids or directly on the HTML element.

This example shows the color as border, it can be applied via the CSS property "border" or "border-color".

```
.border, #border, table{ border:4px solid rgb(241, 156, 168) }
```

If only the border color should be changed use the property `border-color`.

```
.border{ border-color:rgb(241, 156, 168) }
```

If you want to add a box shadow in that color use:

Here you see how a box with a 4 pixel `rgb(241, 156, 168)` colored shadow looks like.

```
.boxshadow{ -moz-box-shadow:4px 4px 4px  
4px rgb(241, 156, 168); -webkit-box-  
shadow:4px 4px 4px 4px rgb(241, 156, 168);  
box-shadow:4px 4px 4px 4px rgb(241, 156,  
168) }
```

Background

The CSS property to change the background color of an element to CIELCh 73, 33.955, 11.914 is called "background". The background property can be set on classes, ids or directly on the HTML element.

```
.background, #background, body{  
background: rgb(241, 156, 168) }
```

If only the background color should be changed can be used:

```
.background{ background-color: rgb(241,  
156, 168) }
```

This example shows the color as background, it is applied via the CSS property "background".

To optimize and compress your CSS code, you can use our [online CSS compressor and optimizer](#) based on csstidy. If you want to create a linear or radial gradient as background or border, check our [CSS Gradient Generator](#).

Hey! You found this booklet interesting? Support Converting Colors with the new Membership Option!

The pro membership hides all ads, plus gives you double the colors in the color bucket, and more awesome pro features!

[Learn more, Memberships starting at \\$2.50/m!](#)

**Follow me
on Twitter!**

@ConvertingColor