

Converting Colors

CIELCh(73, 35.360, 9.081)

Have a look what the booklet for
CIELCh(73, 35.360, 9.081) contains.

CIELCh(73, 35.712, 9.203)	3
<i>Conversions</i>	4
<i>Details</i>	6
<i>Harmonies</i>	11
<i>Previews</i>	20
<i>Color Blindness Simulation</i>	23
<i>CSS Examples</i>	26

Color

CIELCh(73, 35.712, 9.203)

Conversions

Conversions Part 1

Format	Color
Hex	F39AAA
RGB	243, 154, 170
RGB Percent	95%, 60%, 67%
CMY	0.0463, 0.3954, 0.3327
CMYK	0.00, 0.37, 0.30, 0.05
HSL	349°, 79%, 78%
HSV	349°, 37%, 95%
XYZ	55.8825, 45.1644, 43.8870
YIQ	182.4350, 47.9080, 23.8440

Conversions

Conversions Part 2

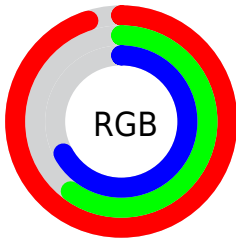
Format	Color
R _Y B	243, 154, 170
Decimal	15964842
CIE Lab	73.00, 35.25, 5.71
CIE LCh	73, 35.712, 9.203
Yxy	45.1644, 0.3856, 0.3116
Android (android.graphics.Color)	4294154922 (0xFFFF39AAA)
YUV	182.4350, -6.1305, 53.1155
Hunter-Lab	67.2044, 30.8202, 8.3246

Details

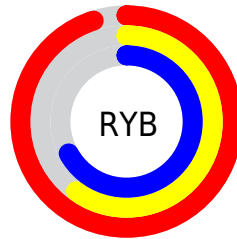
The CIELCh color **73, 35.712, 9.203** is a light color, and the websafe version is hex **FF9999**. A complement of this color would be **90, 30.227, 181.399**, and the grayscale version is **74, 0.009, 296.813**.

A 20% lighter version of the original color is **88, 18.708, 354.511**, and **53, 35.997, 8.972** is the 20% darker color. If you saturate the color by 10%, you get **67, 46.190, 11.100**, and if you desaturate by 10%, it is **79, 25.396, 7.679**.

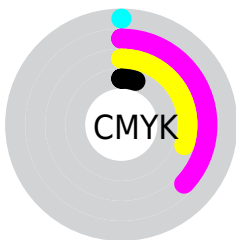
Distribution



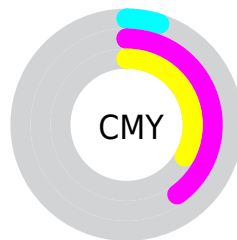
- Red (95%)
- Green (60%)
- Blue (67%)



- Red (95%)
- Yellow (60%)
- Blue (67%)



- Cyan (0%)
- Magenta (37%)
- Yellow (30%)
- Black (5%)





- Cyan (5%)
- Magenta (40%)
- Yellow (33%)

Brightness & Saturation Gradients

These gradients show how the CIELCh color 73, 35.712, 9.203 changes by changing the brightness by 10 percent. The first figure shows a shift by +10% for each color and the second figure -10%.

Similar to the brightness gradients but the following saturation gradients show a change of the CIELCh color 73, 35.712, 9.203 by changing the saturation by 10% instead.

 73, 35.712, 9.203  73, 35.712, 9.203

 100, 35.712, 9.203  63, 35.712, 9.203

 93, 35.712, 9.203  53, 35.712, 9.203

 43, 35.712, 9.203

 33, 35.712, 9.203

 23, 35.712, 9.203

 13, 35.712, 9.203

 3, 35.712, 9.203

 0, 35.712, 9.203

 73, 35.712, 9.203  73, 35.712, 9.203

67, 46.190, 11.100

79, 25.396, 7.679

62, 56.532, 13.487

85, 15.449, 6.417

58, 66.341, 16.518

92, 5.977, 5.314

55, 75.234, 20.336

98, 2.982, 184.730

53, 82.986, 24.981

99, 4.077, 199.309

51, 89.598, 30.215

51, 91.722, 31.920

Harmonies

Complementary

The Complementary color scheme is a pair of colors which are on the opposite of each other on the color wheel.



73, 35.712, 9.203



90, 30.227, 181.399

Rectangle

The Rectangle color scheme consists of four colors that form a rectangle on the color wheel.



73, 35.712, 9.203



73, 35.712, 59.203



73, 35.712, 189.203



73, 35.712, 239.203

Sweetspot

The Sweet Spot groups the original color and five complimentary colors.



73, 35.709, 9.206



93, 10.477, 5.794



74, 53.682, 320.944



48, 7.066, 5.943



0, 0.000, 0.000



53, 0.007, 296.813

Same Dimension

The Same Dimension uses a secret algorithm to generate beautiful new colors.



73, 35.709, 9.206



72, 45.174, 10.588



79, 29.403, 51.244



48, 5.214, 5.628



39, 74.371, 30.968



9, 30.079, 17.634

Inverse Universe

The Inverse Universe completely reimagines the original color for something new.



73, 35.709, 9.206



72, 45.174, 10.588



83, 23.563, 237.933



48, 5.214, 5.628



39, 74.371, 30.968



9, 30.079, 17.634

Previews

White Background



This preview shows how the CIELCh color 73, 35.712, 9.203 looks on a white background.

Color Contrast Check

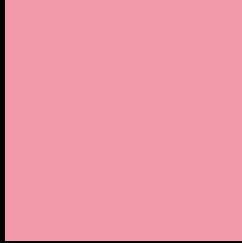
Large Text (above 18pt) WCAG AA × Fail

Any Text WCAG AA × Fail

Large Text (above 18pt) WCAG AAA × Fail

Any Text WCAG AAA × Fail

Black Background



This preview shows how the CIELCh color 73, 35.712, 9.203 looks on a black background.

Color Contrast Check

Large Text (above 18pt) WCAG AA ✓ Pass

Any Text WCAG AA ✓ Pass

Large Text (above 18pt) WCAG AAA ✓ Pass

Any Text WCAG AAA ✓ Pass

If you want to check with other color combinations, try the [Color Contrast Checker](#).

CIELCh 73, 35.712, 9.203

Background



This preview shows how black text looks on a background with the CIELCh color 73, 35.712, 9.203.

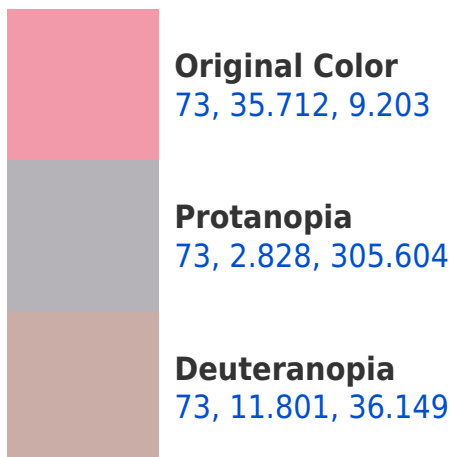


This preview shows how white text looks on a background with the CIELCh color 73, 35.712, 9.203.

Color Blindness Simulation

Color vision deficiency is a very complex topic, and I could not describe the different causes any better than Wikipedia does, so if you want to learn more, you should check out their [article about color blindness](#).

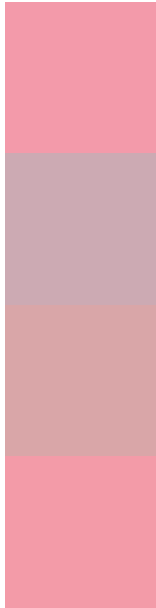
Dichromacy





Tritanopia
73, 35.162, 13.309

Trichromacy



Original Color
73, 35.712, 9.203

Protanomaly
73, 13.839, 0.089

Deuteranomaly
73, 20.051, 18.133

Tritanomaly
73, 35.187, 11.573

Monochromacy



Original Color
73, 35.712, 9.203

Achromatopsia
74, 0.009, 296.813

Achromatomaly
74, 12.531, 8.087

CSS Examples

Text

The CSS property to change the color of the text to CIELCh 73, 35.712, 9.203 is called "color". The color property can be set on classes, ids or directly on the HTML element.

This example shows how text in the color `rgb(243, 154, 170)` looks like.

```
.text, #text, p{  
    color:rgb(243, 154, 170)  
}
```

If you want to add a text shadow in that color use the text-shadow property, you can generate a text shadow directly with our [CSS Text Shadow Generator](#).

Here you see how black text with a 4 pixel rgb(243, 154, 170) colored shadow looks like.

```
.shadow{ text-shadow: 4px 4px 2px rgb(243, 154, 170) }
```

Border

The CSS property to change the border of an element to CIELCh 73, 35.712, 9.203 is called "border". The border property can be set on classes, ids or directly on the HTML element.

This example shows the color as border, it can be applied via the CSS property "border" or "border-color".

```
.border, #border, table{ border:4px solid rgb(243, 154, 170) }
```

If only the border color should be changed use the property `border-color`.

```
.border{ border-color:rgb(243, 154, 170) }
```

If you want to add a box shadow in that color use:

Here you see how a box with a 4 pixel `rgb(243, 154, 170)` colored shadow looks like.

```
.boxshadow{ -moz-box-shadow:4px 4px 4px  
4px rgb(243, 154, 170); -webkit-box-  
shadow:4px 4px 4px 4px rgb(243, 154, 170);  
box-shadow:4px 4px 4px 4px rgb(243, 154,  
170) }
```

Background

The CSS property to change the background color of an element to CIELCh 73, 35.712, 9.203 is called "background". The background property can be set on classes, ids or directly on the HTML element.

```
.background, #background, body{  
background: rgb(243, 154, 170) }
```

If only the background color should be changed can be used:

```
.background{ background-color: rgb(243,  
154, 170) }
```

This example shows the color as background, it is applied via the CSS property "background".

To optimize and compress your CSS code, you can use our [online CSS compressor and optimizer](#) based on csstidy. If you want to create a linear or radial gradient as background or border, check our [CSS Gradient Generator](#).

Hey! You found this booklet interesting? Support Converting Colors with the new Membership Option!

The pro membership hides all ads, plus gives you double the colors in the color bucket, and more awesome pro features!

[Learn more, Memberships starting at \\$2.50/m!](#)

**Follow me
on Twitter!**

@ConvertingColor