

Converting Colors

CIELCh(73, 36.387, 13.782)

Have a look what the booklet for
CIELCh(73, 36.387, 13.782) contains.

CIELCh(73, 36.387, 13.782)	3
<i>Conversions</i>	4
<i>Details</i>	6
<i>Harmonies</i>	11
<i>Previews</i>	20
<i>Color Blindness Simulation</i>	23
<i>CSS Examples</i>	26

Color

CIELCh(73, 36.387, 13.782)

Conversions

Conversions Part 1

Format	Color
Hex	F59AA5
RGB	245, 154, 165
RGB Percent	96%, 60%, 65%
CMY	0.0398, 0.3966, 0.3535
CMYK	0.00, 0.37, 0.33, 0.04
HSL	353°, 82%, 78%
HSV	353°, 37%, 96%
XYZ	55.9173, 45.1644, 41.3042
YIQ	182.4630, 50.7050, 22.7130

Conversions

Conversions Part 2

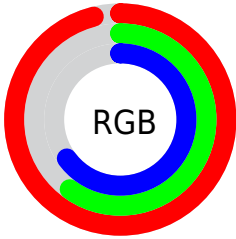
Format	Color
R _Y B	245, 154, 165
Decimal	16095909
CIE Lab	73.00, 35.34, 8.67
CIE LCh	73, 36.387, 13.782
Yxy	45.1644, 0.3927, 0.3172
Android (android.graphics.Color)	4294285989 (0xFFFF59AA5)
YUV	182.4630, -8.6093, 54.8449
Hunter-Lab	67.2044, 30.9128, 10.6031

Details

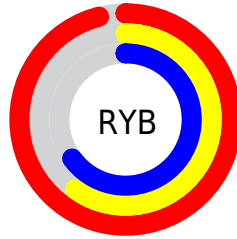
The CIELCh color **73, 36.387, 13.782** is a light color, and the websafe version is hex **FF9999**. A complement of this color would be **91, 29.777, 186.369**, and the grayscale version is **74, 0.009, 296.813**.

A 20% lighter version of the original color is **88, 17.839, 2.137**, and **53, 36.771, 13.873** is the 20% darker color. If you saturate the color by 10%, you get **67, 47.159, 15.695**, and if you desaturate by 10%, it is **79, 25.899, 12.267**.

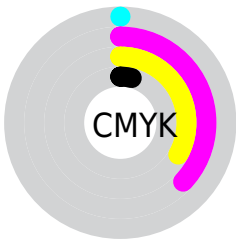
Distribution



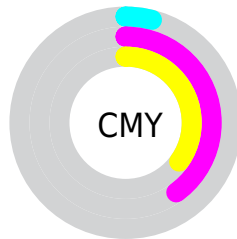
- Red (96%)
- Green (60%)
- Blue (65%)



- Red (96%)
- Yellow (60%)
- Blue (65%)



- Cyan (0%)
- Magenta (37%)
- Yellow (33%)
- Black (4%)



- Cyan (4%)
- Magenta (40%)
- Yellow (35%)

Brightness & Saturation Gradients

These gradients show how the CIELCh color 73, 36.387, 13.782 changes by changing the brightness by 10 percent. The first figure shows a shift by +10% for each color and the second figure -10%.

Similar to the brightness gradients but the following saturation gradients show a change of the CIELCh color 73, 36.387, 13.782 by changing the saturation by 10% instead.

 73, 36.387, 13.782

 73, 36.387, 13.782

 100, 36.387,
13.782

 63, 36.387, 13.782

 93, 36.387, 13.782

 53, 36.387, 13.782

 43, 36.387, 13.782

 33, 36.387, 13.782

 23, 36.387, 13.782

 13, 36.387, 13.782

 3, 36.387, 13.782

 0, 36.387, 13.782

 73, 36.387, 13.782

 73, 36.387, 13.782

67, 47.159, 15.695

79, 25.899, 12.267

62, 57.938, 18.125

85, 15.882, 11.034

58, 68.353, 21.216

92, 6.420, 9.979

55, 78.029, 25.067

98, 2.464, 189.494

53, 86.678, 29.610

99, 3.508, 199.372

51, 93.997, 34.381

51, 95.852, 35.565

Harmonies

Complementary

The Complementary color scheme is a pair of colors which are on the opposite of each other on the color wheel.



73, 36.387, 13.782



91, 29.777, 186.369

Rectangle

The Rectangle color scheme consists of four colors that form a rectangle on the color wheel.



73, 36.387, 13.782



73, 36.387, 63.782



73, 36.387, 193.782



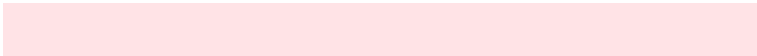
73, 36.387, 243.782

Sweetspot

The Sweet Spot groups the original color and five complimentary colors.



73, 36.384, 13.785



93, 10.323, 10.377



74, 55.371, 322.493



48, 6.966, 10.518



0, 0.000, 0.000



53, 0.007, 296.813

Same Dimension

The Same Dimension uses a secret algorithm to generate beautiful new colors.



73, 36.384, 13.785



71, 46.332, 15.264



80, 29.854, 56.576



48, 5.134, 10.219



39, 77.304, 34.742



8, 30.335, 20.099

Inverse Universe

The Inverse Universe completely reimagines the original color for something new.



73, 36.384, 13.785



71, 46.332, 15.264



82, 24.527, 245.025



48, 5.134, 10.219



39, 77.304, 34.742



8, 30.335, 20.099

Previews

White Background



This preview shows how the CIELCh color 73, 36.387, 13.782 looks on a white background.

Color Contrast Check

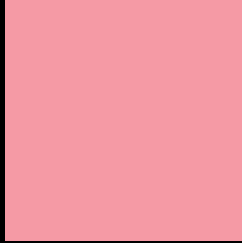
Large Text (above 18pt) WCAG AA × Fail

Any Text WCAG AA × Fail

Large Text (above 18pt) WCAG AAA × Fail

Any Text WCAG AAA × Fail

Black Background



This preview shows how the CIE LCh color 73, 36.387, 13.782 looks on a black background.

Color Contrast Check

Large Text (above 18pt) WCAG AA ✓ Pass

Any Text WCAG AA ✓ Pass

Large Text (above 18pt) WCAG AAA ✓ Pass

Any Text WCAG AAA ✓ Pass

If you want to check with other color combinations, try the [Color Contrast Checker](#).

CIELCh 73, 36.387, 13.782

Background



This preview shows how black text looks on a background with the CIELCh color 73, 36.387, 13.782.



This preview shows how white text looks on a background with the CIELCh color 73, 36.387, 13.782.

Color Blindness Simulation

Color vision deficiency is a very complex topic, and I could not describe the different causes any better than Wikipedia does, so if you want to learn more, you should check out their [article about color blindness](#).

Dichromacy



Original Color

73, 36.387, 13.782

Protanopia

73, 1.499, 19.191

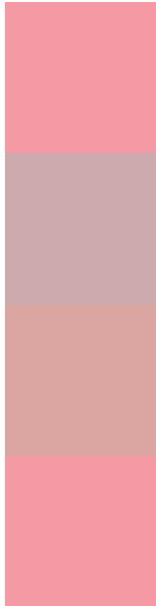
Deuteranopia

73, 13.939, 47.840



Tritanopia
73, 36.387, 13.782

Trichromacy



Original Color
73, 36.387, 13.782

Protanomaly
73, 13.657, 11.520

Deuteranomaly
73, 21.258, 27.003

Tritanomaly
73, 36.387, 13.782

Monochromacy



Original Color
73, 36.387, 13.782

Achromatopsia
74, 0.009, 296.813

Achromatomaly
73, 12.851, 10.871

CSS Examples

Text

The CSS property to change the color of the text to CIELCh 73, 36.387, 13.782 is called "color". The color property can be set on classes, ids or directly on the HTML element.

This example shows how text in the color `rgb(245, 154, 165)` looks like.

```
.text, #text, p{  
    color:rgb(245, 154, 165)  
}
```

If you want to add a text shadow in that color use the text-shadow property, you can generate a text shadow directly with our [CSS Text Shadow Generator](#).

Here you see how black text with a 4 pixel rgb(245, 154, 165) colored shadow looks like.

```
.shadow{ text-shadow: 4px 4px 2px rgb(245, 154, 165) }
```

Border

The CSS property to change the border of an element to CIELCh 73, 36.387, 13.782 is called "border". The border property can be set on classes, ids or directly on the HTML element.

This example shows the color as border, it can be applied via the CSS property "border" or "border-color".

```
.border, #border, table{ border:4px solid rgb(245, 154, 165) }
```

If only the border color should be changed use the property `border-color`.

```
.border{ border-color:rgb(245, 154, 165) }
```

If you want to add a box shadow in that color use:

Here you see how a box with a 4 pixel `rgb(245, 154, 165)` colored shadow looks like.

```
.boxshadow{ -moz-box-shadow:4px 4px 4px  
4px rgb(245, 154, 165); -webkit-box-  
shadow:4px 4px 4px 4px rgb(245, 154, 165);  
box-shadow:4px 4px 4px 4px rgb(245, 154,  
165) }
```

Background

The CSS property to change the background color of an element to CIELCh 73, 36.387, 13.782 is called "background". The background property can be set on classes, ids or directly on the HTML element.

```
.background, #background, body{  
background: rgb(245, 154, 165) }
```

If only the background color should be changed can be used:

```
.background{ background-color: rgb(245,  
154, 165) }
```

This example shows the color as background, it is applied via the CSS property "background".

To optimize and compress your CSS code, you can use our [online CSS compressor and optimizer](#) based on csstidy. If you want to create a linear or radial gradient as background or border, check our [CSS Gradient Generator](#).

Hey! You found this booklet interesting? Support Converting Colors with the new Membership Option!

The pro membership hides all ads, plus gives you double the colors in the color bucket, and more awesome pro features!

[Learn more, Memberships starting at \\$2.50/m!](#)

**Follow me
on Twitter!**

@ConvertingColor