

Converting Colors

CIELCh(73, 37.467, 7.581)

Have a look what the booklet for
CIELCh(73, 37.467, 7.581) contains.

CIELCh(73, 37.430, 7.556)	3
<i>Conversions</i>	4
<i>Details</i>	6
<i>Harmonies</i>	11
<i>Previews</i>	20
<i>Color Blindness Simulation</i>	23
<i>CSS Examples</i>	26

Color

CIELCh(73, 37.430, 7.556)

Conversions

Conversions Part 1

Format	Color
Hex	F699AC
RGB	246, 153, 172
RGB Percent	96%, 60%, 67%
CMY	0.0367, 0.4013, 0.3268
CMYK	0.00, 0.38, 0.30, 0.04
HSL	348°, 83%, 78%
HSV	348°, 38%, 96%
XYZ	56.6272, 45.1644, 44.5945
YIQ	182.9730, 49.3290, 25.6250

Conversions

Conversions Part 2

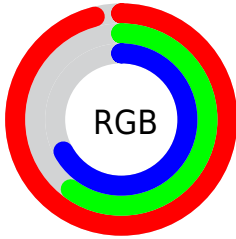
Format	Color
RYB	246, 153, 172
Decimal	16161196
CIELab	73.00, 37.10, 4.92
CIELCh	73, 37.430, 7.556
Yxy	45.1644, 0.3868, 0.3085
Android (android.graphics.Color)	4294351276 (0xFFFF699AC)
YUV	182.9730, -5.4097, 55.2747
Hunter-Lab	67.2044, 32.7984, 7.7004

Details

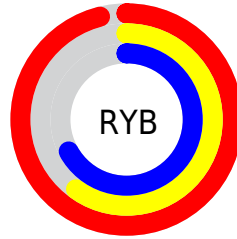
The CIELCh color **73, 37.430, 7.556** is a light color, and the websafe version is hex **FF9999**. A complement of this color would be **91, 31.888, 179.257**, and the grayscale version is **74, 0.009, 296.813**.

A 20% lighter version of the original color is **88, 19.717, 350.910**, and **53, 37.745, 7.381** is the 20% darker color. If you saturate the color by 10%, you get **67, 47.916, 9.497**, and if you desaturate by 10%, it is **79, 27.018, 5.992**.

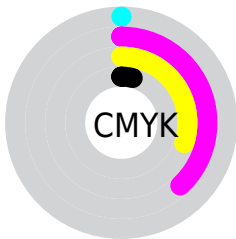
Distribution



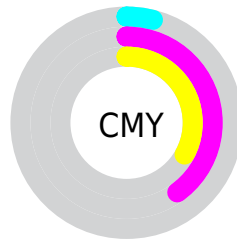
- Red (96%)
- Green (60%)
- Blue (67%)



- Red (96%)
- Yellow (60%)
- Blue (67%)



- Cyan (0%)
- Magenta (38%)
- Yellow (30%)
- Black (4%)



- Cyan (4%)
- Magenta (40%)
- Yellow (33%)

Brightness & Saturation Gradients

These gradients show how the CIELCh color 73, 37.430, 7.556 changes by changing the brightness by 10 percent. The first figure shows a shift by +10% for each color and the second figure -10%.

Similar to the brightness gradients but the following saturation gradients show a change of the CIELCh color 73, 37.430, 7.556 by changing the saturation by 10% instead.

 73, 37.430, 7.556

 73, 37.430, 7.556

 100, 37.430, 7.556

 63, 37.430, 7.556

 93, 37.430, 7.556

 53, 37.430, 7.556

 43, 37.430, 7.556

 33, 37.430, 7.556

 23, 37.430, 7.556

 13, 37.430, 7.556

 3, 37.430, 7.556

 0, 37.430, 7.556

 73, 37.430, 7.556

 73, 37.430, 7.556

67, 47.916, 9.497

79, 27.018, 5.992

63, 58.148, 11.935

85, 16.915, 4.695

58, 67.707, 15.031

92, 7.248, 3.572

55, 76.209, 18.932

98, 1.930, 183.044

53, 83.469, 23.692

99, 3.241, 199.404

52, 89.621, 29.068

52, 90.918, 30.180

Harmonies

Complementary

The Complementary color scheme is a pair of colors which are on the opposite of each other on the color wheel.



73, 37.430, 7.556



91, 31.888, 179.257

Rectangle

The Rectangle color scheme consists of four colors that form a rectangle on the color wheel.



73, 37.430, 7.556



73, 37.430, 57.556



73, 37.430, 187.556



73, 37.430, 237.556

Sweetspot

The Sweet Spot groups the original color and five complimentary colors.



73, 37.427, 7.559



93, 10.562, 3.919



73, 55.564, 319.969



48, 7.122, 4.069



0, 0.000, 0.000



53, 0.007, 296.813

Same Dimension

The Same Dimension uses a secret algorithm to generate beautiful new colors.



73, 37.427, 7.559



71, 46.330, 8.919



78, 31.110, 47.690



48, 5.258, 3.751



39, 73.172, 29.156



9, 29.982, 16.514

Inverse Universe

The Inverse Universe completely reimagines the original color for something new.



73, 37.427, 7.559



71, 46.330, 8.919



84, 24.305, 233.383



48, 5.258, 3.751



39, 73.172, 29.156



9, 29.982, 16.514

Previews

White Background



This preview shows how the CIELCh color 73, 37.430, 7.556 looks on a white background.

Color Contrast Check

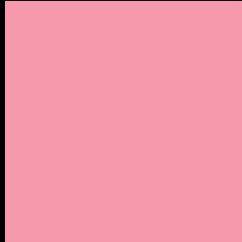
Large Text (above 18pt) WCAG AA × Fail

Any Text WCAG AA × Fail

Large Text (above 18pt) WCAG AAA × Fail

Any Text WCAG AAA × Fail

Black Background



This preview shows how the CIELCh color 73, 37.430, 7.556 looks on a black background.

Color Contrast Check

Large Text (above 18pt) WCAG AA ✓ Pass

Any Text WCAG AA ✓ Pass

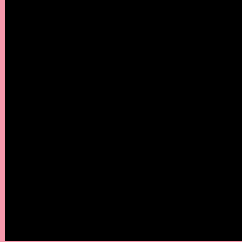
Large Text (above 18pt) WCAG AAA ✓ Pass

Any Text WCAG AAA ✓ Pass

If you want to check with other color combinations, try the [Color Contrast Checker](#).

CIELCh 73, 37.430, 7.556

Background



This preview shows how black text looks on a background with the CIELCh color 73, 37.430, 7.556.



This preview shows how white text looks on a background with the CIELCh color 73, 37.430, 7.556.

Color Blindness Simulation

Color vision deficiency is a very complex topic, and I could not describe the different causes any better than Wikipedia does, so if you want to learn more, you should check out their [article about color blindness](#).

Dichromacy



Original Color

73, 37.430, 7.556

Protanopia

73, 3.885, 301.471

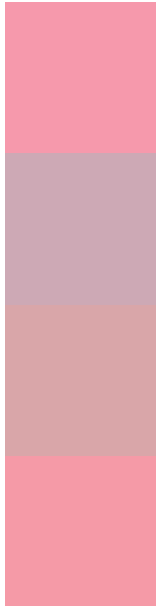
Deuteranopia

73, 11.249, 34.091



Tritanopia
73, 36.387, 13.782

Trichromacy



Original Color
73, 37.430, 7.556

Protanomaly
73, 15.128, 355.403

Deuteranomaly
73, 20.038, 16.603

Tritanomaly
73, 36.398, 12.104

Monochromacy



Original Color
73, 37.430, 7.556

Achromatopsia
74, 0.009, 296.813

Achromatomaly
73, 13.517, 4.402

CSS Examples

Text

The CSS property to change the color of the text to CIELCh 73, 37.430, 7.556 is called "color". The color property can be set on classes, ids or directly on the HTML element.

This example shows how text in the color `rgb(246, 153, 172)` looks like.

```
.text, #text, p{  
    color:rgb(246, 153, 172)  
}
```

If you want to add a text shadow in that color use the text-shadow property, you can generate a text shadow directly with our [CSS Text Shadow Generator](#).

Here you see how black text with a 4 pixel rgb(246, 153, 172) colored shadow looks like.

```
.shadow{ text-shadow: 4px 4px 2px rgb(246, 153, 172) }
```

Border

The CSS property to change the border of an element to CIELCh 73, 37.430, 7.556 is called "border". The border property can be set on classes, ids or directly on the HTML element.

This example shows the color as border, it can be applied via the CSS property "border" or "border-color".

```
.border, #border, table{ border:4px solid rgb(246, 153, 172) }
```

If only the border color should be changed use the property `border-color`.

```
.border{ border-color:rgb(246, 153, 172) }
```

If you want to add a box shadow in that color use:

Here you see how a box with a 4 pixel `rgb(246, 153, 172)` colored shadow looks like.

```
.boxshadow{ -moz-box-shadow:4px 4px 4px  
4px rgb(246, 153, 172); -webkit-box-  
shadow:4px 4px 4px 4px rgb(246, 153, 172);  
box-shadow:4px 4px 4px 4px rgb(246, 153,  
172) }
```

Background

The CSS property to change the background color of an element to CIELCh 73, 37.430, 7.556 is called "background". The background property can be set on classes, ids or directly on the HTML element.

```
.background, #background, body{  
background: rgb(246, 153, 172) }
```

If only the background color should be changed can be used:

```
.background{ background-color: rgb(246,  
153, 172) }
```

This example shows the color as background, it is applied via the CSS property "background".

To optimize and compress your CSS code, you can use our [online CSS compressor and optimizer](#) based on csstidy. If you want to create a linear or radial gradient as background or border, check our [CSS Gradient Generator](#).

Hey! You found this booklet interesting? Support Converting Colors with the new Membership Option!

The pro membership hides all ads, plus gives you double the colors in the color bucket, and more awesome pro features!

[Learn more, Memberships starting at \\$2.50/m!](#)

**Follow me
on Twitter!**

@ConvertingColor