

Converting Colors

CIELCh(73, 4.464, 314.788)

Have a look what the booklet for
CIELCh(73, 4.464, 314.788) contains.

CIELCh(73, 4.102, 311.647)	3
<i>Conversions</i>	4
<i>Details</i>	6
<i>Harmonies</i>	12
<i>Previews</i>	21
<i>Color Blindness Simulation</i>	24
<i>CSS Examples</i>	27

Color

CIELCh(73, 4.102, 311.647)

Conversions

Conversions Part 1

Format	Color
Hex	B6B2B9
RGB	182, 178, 185
RGB Percent	71%, 70%, 73%
CMY	0.2871, 0.3028, 0.2754
CMYK	0.02, 0.04, 0.00, 0.28
HSL	274°, 5%, 71%
HSV	274°, 4%, 72%
XYZ	43.8490, 45.1644, 52.1826
YIQ	179.9940, 0.1370, 3.0250

Conversions

Conversions Part 2

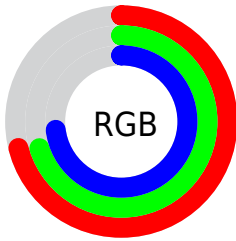
Format	Color
RYB	182, 178, 185
Decimal	11973305
CIELab	73.00, 2.73, -3.07
CIELCh	73, 4.102, 311.647
Yxy	45.1644, 0.3106, 0.3199
Android (android.graphics.Color)	4290163385 (0xFFB6B2B9)
YUV	179.9940, 2.4680, 1.7593
Hunter-Lab	67.2044, -1.1416, 1.0059

Details

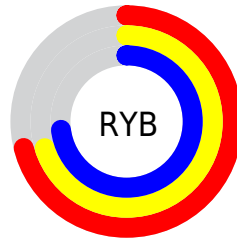
The CIELCh color $73, 4.102, 311.647$ is a light color, and the websafe version is hex `CCCCCC`. A complement of this color would be $75, 4.067, 131.395$, and the grayscale version is $73, 0.009, 296.813$.

A 20% lighter version of the original color is $93, 3.901, 311.604$, and $53, 4.370, 311.713$ is the 20% darker color. If you saturate the color by 10%, you get $68, 15.108, 312.097$, and if you desaturate by 10%, it is $78, 6.610, 131.295$.

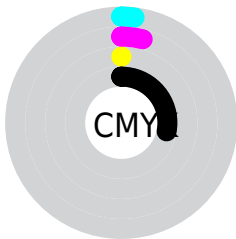
Distribution



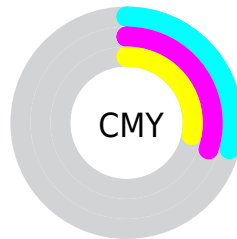
- Red (71%)
- Green (70%)
- Blue (73%)



- Red (71%)
- Yellow (70%)
- Blue (73%)



- Cyan (2%)
- Magenta (4%)
- Yellow (0%)
- Black (28%)



- Cyan (29%)
- Magenta (30%)
- Yellow (28%)

Brightness & Saturation Gradients

These gradients show how the CIELCh color 73, 4.102, 311.647 changes by changing the brightness by 10 percent. The first figure shows a shift by +10% for each color and the second figure -10%.

Similar to the brightness gradients but the following saturation gradients show a change of the CIELCh color 73, 4.102, 311.647 by changing the saturation by 10% instead.

■ 73, 4.102, 311.647

■ 73, 4.102, 311.647

100, 4.102,
311.647

■ 63, 4.102, 311.647

■ 93, 4.102, 311.647

■ 53, 4.102, 311.647

■ 43, 4.102, 311.647

■ 33, 4.102, 311.647

■ 23, 4.102, 311.647

■ 13, 4.102, 311.647

■ 3, 4.102, 311.647

■ 0, 4.102, 311.647

■ 73, 4.102, 311.647

■ 73, 4.102, 311.647

68, 15.108,
312.097

78, 6.610, 131.295

62, 26.377,
312.561

84, 17.006,
130.922

57, 37.826,
313.039

89, 27.089,
130.595

52, 49.314,
313.511

95, 36.865,
130.306

47, 60.603,
313.944

96, 37.667,
127.010

42, 71.315,
314.288

97, 36.726,
122.780

38, 80.908,
314.472

97, 36.002,
118.279

35, 88.706,
314.407

98, 35.521,
113.557

32, 94.059,

98, 35.303,
108.682

314.000

Harmonies

Complementary

The Complementary color scheme is a pair of colors which are on the opposite of each other on the color wheel.



73, 4.102, 311.647



75, 4.067, 131.395

Rectangle

The Rectangle color scheme consists of four colors that form a rectangle on the color wheel.



73, 4.102, 311.647



73, 4.102, 1.647



73, 4.102, 131.647



73, 4.102, 181.647

Sweetspot

The Sweet Spot groups the original color and five complimentary colors.



73, 4.100, 311.641



94, 1.341, 311.439



73, 2.410, 262.877



50, 0.762, 311.430



97, 0.011, 296.813



50, 0.007, 296.813

Same Dimension

The Same Dimension uses a secret algorithm to generate beautiful new colors.



73, 4.100, 311.641



91, 6.698, 311.703



73, 4.422, 326.438



37, 3.669, 311.727



25, 84.851, 313.786



2, 16.160, 307.376

Inverse Universe

The Inverse Universe completely reimagines the original color for something new.



73, 3.099, 347.870



92, 5.065, 348.017



74, 4.405, 146.128



37, 2.774, 348.072



33, 58.384, 8.146



2, 11.771, 354.823

Previews

White Background



This preview shows how the CIELCh color 73, 4.102, 311.647 looks on a white background.

Color Contrast Check

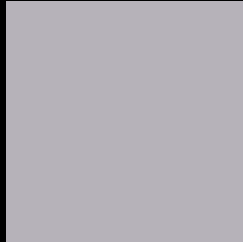
Large Text (above 18pt) WCAG AA × Fail

Any Text WCAG AA × Fail

Large Text (above 18pt) WCAG AAA × Fail

Any Text WCAG AAA × Fail

Black Background



This preview shows how the CIE LCh color 73, 4.102, 311.647 looks on a black background.

Color Contrast Check

Large Text (above 18pt) WCAG AA ✓ Pass

Any Text WCAG AA ✓ Pass

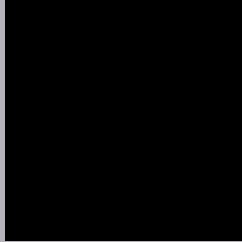
Large Text (above 18pt) WCAG AAA ✓ Pass

Any Text WCAG AAA ✓ Pass

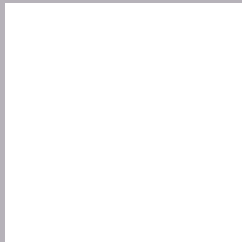
If you want to check with other color combinations, try the [Color Contrast Checker](#).

CIELCh 73, 4.102, 311.647

Background



This preview shows how black text looks on a background with the CIELCh color 73, 4.102, 311.647.



This preview shows how white text looks on a background with the CIELCh color 73, 4.102, 311.647.

Color Blindness Simulation

Color vision deficiency is a very complex topic, and I could not describe the different causes any better than Wikipedia does, so if you want to learn more, you should check out their [article about color blindness](#).

Dichromacy



Original Color


73, 4.102, 311.647

Protanopia

73, 3.980, 306.689

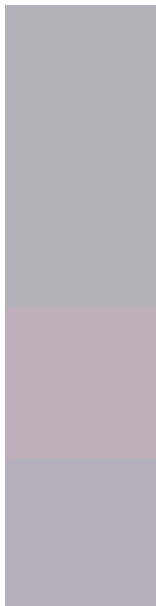
Deuteranopia

73, 9.936, 339.373



Tritanopia
73, 7.949, 306.873

Trichromacy



Original Color
73, 4.102, 311.647

Protanomaly
73, 3.980, 306.689

Deuteranomaly
73, 8.209, 333.450

Tritanomaly
73, 6.913, 309.330

Monochromacy



Original Color
73, 4.102, 311.647

Achromatopsia
73, 0.009, 296.813

Achromatomaly
73, 1.805, 314.648

CSS Examples

Text

The CSS property to change the color of the text to CIELCh 73, 4.102, 311.647 is called "color". The color property can be set on classes, ids or directly on the HTML element.

This example shows how text in the color `rgb(182, 178, 185)` looks like.

```
.text, #text, p{  
    color:rgb(182, 178, 185)  
}
```

If you want to add a text shadow in that color use the text-shadow property, you can generate a text shadow directly with our [CSS Text Shadow Generator](#).

Here you see how black text with a 4 pixel rgb(182, 178, 185) colored shadow looks like.

```
.shadow{ text-shadow: 4px 4px 2px rgb(182, 178, 185) }
```

Border

The CSS property to change the border of an element to CIELCh 73, 4.102, 311.647 is called "border". The border property can be set on classes, ids or directly on the HTML element.

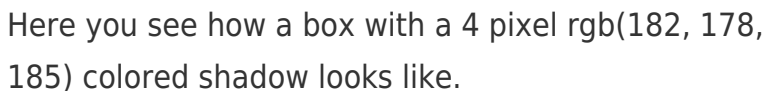
This example shows the color as border, it can be applied via the CSS property "border" or "border-color".

```
.border, #border, table{ border:4px solid rgb(182, 178, 185) }
```

If only the border color should be changed use the property `border-color`.

```
.border{ border-color:rgb(182, 178, 185) }
```

If you want to add a box shadow in that color use:



Here you see how a box with a 4 pixel `rgb(182, 178, 185)` colored shadow looks like.

```
.boxshadow{ -moz-box-shadow:4px 4px 4px 4px rgb(182, 178, 185); -webkit-box-shadow:4px 4px 4px 4px rgb(182, 178, 185); box-shadow:4px 4px 4px 4px rgb(182, 178, 185) }
```

Background

The CSS property to change the background color of an element to CIELCh 73, 4.102, 311.647 is called "background". The background property can be set on classes, ids or directly on the HTML element.

```
.background, #background, body{  
background: rgb(182, 178, 185) }
```

If only the background color should be changed can be used:

```
.background{ background-color: rgb(182,  
178, 185) }
```

This example shows the color as background, it is applied via the CSS property "background".

To optimize and compress your CSS code, you can use our [online CSS compressor and optimizer](#) based on csstidy. If you want to create a linear or radial gradient as background or border, check our [CSS Gradient Generator](#).

Hey! You found this booklet interesting? Support Converting Colors with the new Membership Option!

The pro membership hides all ads, plus gives you double the colors in the color bucket, and more awesome pro features!

[Learn more, Memberships starting at \\$2.50/m!](#)

**Follow me
on Twitter!**

@ConvertingColor