

Converting Colors

CIELCh(73, 42.929, 11.762)

Have a look what the booklet for
CIELCh(73, 42.929, 11.762) contains.

CIELCh(73, 42.912, 11.770)	3
<i>Conversions</i>	4
<i>Details</i>	6
<i>Harmonies</i>	11
<i>Previews</i>	20
<i>Color Blindness Simulation</i>	23
<i>CSS Examples</i>	26

Color

CIELCh(73, 42.912, 11.770)

Conversions

Conversions Part 1

Format	Color
Hex	FF94A5
RGB	255, 148, 165
RGB Percent	100%, 58%, 65%
CMY	0.0000, 0.4195, 0.3529
CMYK	0.00, 0.42, 0.35, 0.00
HSL	350°, 100%, 79%
HSV	350°, 42%, 100%
XYZ	58.6309, 45.1644, 41.2316
YIQ	181.9310, 58.3150, 27.9710

Conversions

Conversions Part 2

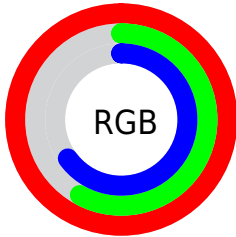
Format	Color
R_{YB}	255, 148, 165
Decimal	16749733
CIE _{Lab}	73.00, 42.01, 8.75
CIE _{LCh}	73, 42.912, 11.770
Yxy	45.1644, 0.4043, 0.3114
Android (android.graphics.Color)	4294939813 (0xFFFF94A5)
YUV	181.9310, -8.3470, 64.0815
Hunter-Lab	67.2044, 38.1202, 10.6672

Details

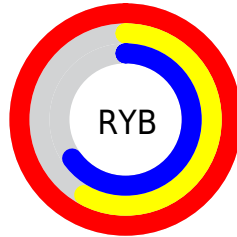
The CIELCh color **73, 42.912, 11.770** is a light color, and the websafe version is hex **FF9999**. A complement of this color would be **93, 34.894, 182.589**, and the grayscale version is **74, 0.009, 296.813**.

A 20% lighter version of the original color is **87, 20.470, 357.054**, and **53, 43.058, 12.160** is the 20% darker color. If you saturate the color by 10%, you get **68, 53.866, 13.928**, and if you desaturate by 10%, it is **79, 32.007, 10.054**.

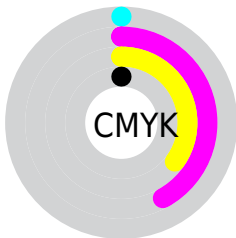
Distribution



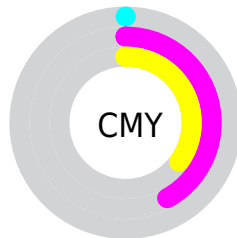
- Red (100%)
- Green (58%)
- Blue (65%)



- Red (100%)
- Yellow (58%)
- Blue (65%)



- Cyan (0%)
- Magenta (42%)
- Yellow (35%)
- Black (0%)



- Cyan (0%)
- Magenta (42%)
- Yellow (35%)

Brightness & Saturation Gradients

These gradients show how the CIELCh color 73, 42.912, 11.770 changes by changing the brightness by 10 percent. The first figure shows a shift by +10% for each color and the second figure -10%.

Similar to the brightness gradients but the following saturation gradients show a change of the CIELCh color 73, 42.912, 11.770 by changing the saturation by 10% instead.

73, 42.912, 11.770

73, 42.912, 11.770

100, 42.912,
11.770

63, 42.912, 11.770

93, 42.912, 11.770

53, 42.912, 11.770

43, 42.912, 11.770

33, 42.912, 11.770

23, 42.912, 11.770

13, 42.912, 11.770

3, 42.912, 11.770

0, 42.912, 11.770

73, 42.912, 11.770

73, 42.912, 11.770

68, 53.866, 13.928

79, 32.007, 10.054

63, 64.532, 16.670

85, 21.439, 8.664

59, 74.490, 20.144

92, 11.348, 7.504

56, 83.407, 24.433

99, 1.803, 6.262

54, 91.140, 29.405

100, 0.012,
296.813

53, 96.559, 33.443

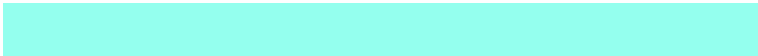
Harmonies

Complementary

The Complementary color scheme is a pair of colors which are on the opposite of each other on the color wheel.



73, 42.912, 11.770



93, 34.894, 182.589

Rectangle

The Rectangle color scheme consists of four colors that form a rectangle on the color wheel.



73, 42.912, 11.770



73, 42.912, 61.770



73, 42.912, 191.770



73, 42.912, 241.770

Sweetspot

The Sweet Spot groups the original color and five complimentary colors.



73, 42.903, 11.770



91, 12.380, 7.617



74, 63.972, 321.678



47, 8.718, 7.862



0, 0.000, 0.000



53, 0.007, 296.813

Same Dimension

The Same Dimension uses a secret algorithm to generate beautiful new colors.



73, 42.903, 11.770



69, 51.736, 13.466



80, 35.625, 52.715



50, 5.359, 7.241



40, 77.023, 32.502



10, 32.227, 20.642

Inverse Universe

The Inverse Universe completely reimagines the original color for something new.



73, 42.903, 11.770



69, 51.736, 13.466



84, 27.747, 241.343



50, 5.359, 7.241



40, 77.023, 32.502



10, 32.227, 20.642

Previews

White Background



This preview shows how the CIELCh color 73, 42.912, 11.770 looks on a white background.

Color Contrast Check

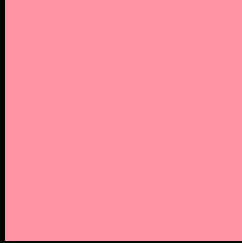
Large Text (above 18pt) WCAG AA × Fail

Any Text WCAG AA × Fail

Large Text (above 18pt) WCAG AAA × Fail

Any Text WCAG AAA × Fail

Black Background



This preview shows how the CIELCh color 73, 42.912, 11.770 looks on a black background.

Color Contrast Check

Large Text (above 18pt) WCAG AA ✓ Pass

Any Text WCAG AA ✓ Pass

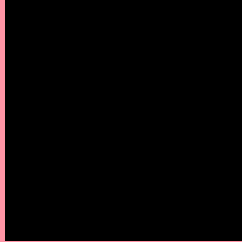
Large Text (above 18pt) WCAG AAA ✓ Pass

Any Text WCAG AAA ✓ Pass

If you want to check with other color combinations, try the [Color Contrast Checker](#).

CIELCh 73, 42.912, 11.770

Background



This preview shows how black text looks on a background with the CIELCh color 73, 42.912, 11.770.



This preview shows how white text looks on a background with the CIELCh color 73, 42.912, 11.770.

Color Blindness Simulation

Color vision deficiency is a very complex topic, and I could not describe the different causes any better than Wikipedia does, so if you want to learn more, you should check out their [article about color blindness](#).

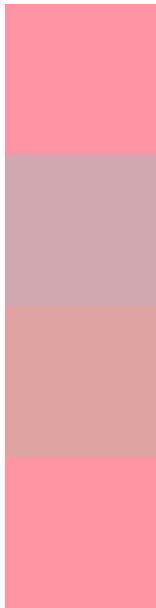
Dichromacy





Tritanopia
73, 42.549, 15.888

Trichromacy



Original Color
73, 42.912, 11.770

Protanomaly
73, 16.331, 5.582

Deuteranomaly
73, 23.572, 24.088

Tritanomaly
73, 42.497, 14.454

Monochromacy



Original Color
73, 42.912, 11.770

Achromatopsia
74, 0.009, 296.813

Achromatomaly
73, 15.341, 8.623

CSS Examples

Text

The CSS property to change the color of the text to CIELCh 73, 42.912, 11.770 is called "color". The color property can be set on classes, ids or directly on the HTML element.

This example shows how text in the color `rgb(255, 148, 165)` looks like.

```
.text, #text, p{  
    color:rgb(255, 148, 165)  
}
```

If you want to add a text shadow in that color use the text-shadow property, you can generate a text shadow directly with our [CSS Text Shadow Generator](#).

Here you see how black text with a 4 pixel rgb(255, 148, 165) colored shadow looks like.

```
.shadow{ text-shadow: 4px 4px 2px rgb(255, 148, 165) }
```

Border

The CSS property to change the border of an element to CIELCh 73, 42.912, 11.770 is called "border". The border property can be set on classes, ids or directly on the HTML element.

This example shows the color as border, it can be applied via the CSS property "border" or "border-color".

```
.border, #border, table{ border:4px solid rgb(255, 148, 165) }
```

If only the border color should be changed use the property `border-color`.

```
.border{ border-color:rgb(255, 148, 165) }
```

If you want to add a box shadow in that color use:

Here you see how a box with a 4 pixel `rgb(255, 148, 165)` colored shadow looks like.

```
.boxshadow{ -moz-box-shadow:4px 4px 4px  
4px rgb(255, 148, 165); -webkit-box-  
shadow:4px 4px 4px 4px rgb(255, 148, 165);  
box-shadow:4px 4px 4px 4px rgb(255, 148,  
165) }
```

Background

The CSS property to change the background color of an element to CIELCh 73, 42.912, 11.770 is called "background". The background property can be set on classes, ids or directly on the HTML element.

```
.background, #background, body{  
background: rgb(255, 148, 165) }
```

If only the background color should be changed can be used:

```
.background{ background-color: rgb(255,  
148, 165) }
```

This example shows the color as background, it is applied via the CSS property "background".

To optimize and compress your CSS code, you can use our [online CSS compressor and optimizer](#) based on csstidy. If you want to create a linear or radial gradient as background or border, check our [CSS Gradient Generator](#).

Hey! You found this booklet interesting? Support Converting Colors with the new Membership Option!

The pro membership hides all ads, plus gives you double the colors in the color bucket, and more awesome pro features!

[Learn more, Memberships starting at \\$2.50/m!](#)

**Follow me
on Twitter!**

@ConvertingColor